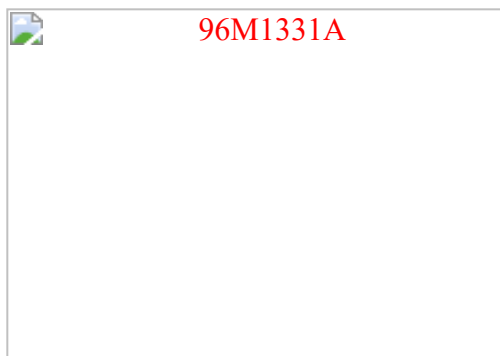


SBC 386SX ISA



96M1331A

96M1331A

- ➔ [Technical Specifications](#)
- ➔ [Layout and Jumper Settings](#)
- ➔ [Datasheet as PDF-File](#)
- ➔ [BIOS and Flash programm](#)



Technical Specifications

- **CPU**
Intel 386SX-40 MHz
- **Memory**
2 PS/2 slots for 4 - 16 MB,
maximum memory 32 MB
- **Chipset**
ALI M6117C
- **BIOS**
Award System BIOS in Flash-ROM
- **Clock/Calendar**
Realtime clock and calendar with battery backup
- **Bus Interface**
16 bit ISA, PC-104, internal ISA for IDE
- **IDE Controller**
For two IDE drives
- **FDD Controller**
Up to 2 drives for
360 KB / 720 KB / 1.44 MB / 1.2 MB
- **DiskOnChip Socket**
From 2 to 288 MB single-chip
- **Serial Port**
Two serial ports (RS232, 16550 FIFO compatible)
COM2 selectable as RS-232/422/485
- **Parallel Port**
One centronics compatible parallel port
(SPP, EPP/ECP bi-directional)
- **Watch-Dog Timer**
16 Level
- **Keyboard / Mouse Connector**
6-pin external Mini-DIN connector (PS/2) for keyboard and mouse per Y-Cabel
- **Standards**
ISA 16 bit
- **Power-Management**
Software controlled by BIOS
- **Power Supply**
+5V
- **Dimensions**
Card half-length, 185 x 122 mm
- **Environment**
Storage Temperatures: -20° ~ 80°C
Operating Temperatures: 0° ~ 55°C (cooler fan required for CPU)
Relative Humidity: 10% ~ 90%, non-condensing



Copyright © 2001 DSM Computer AG