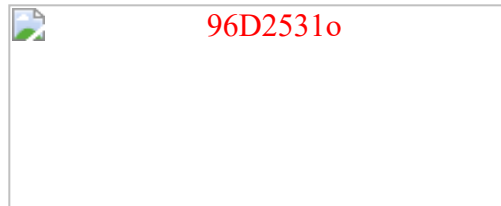


SBC PCI / ISA

VGA/LCD/LAN for Celeron / P III



96D2531o

- ➔ [Technical Specifications](#)
- ➔ [Layout and Jumper Settings](#)
- ➔ [Datasheet as PDF-File](#)
- ➔ [BIOS and Flash programm](#)



Zoom

Technical Specifications

- **CPU**
Intel Celeron / Pentium III FCPGA up to 850 MHz, Socket 370
- **Memory**
4 DIMM sockets for 32 - 512 MB modules
maximum memory 1 GB
- **Chipset**
Intel 82440BX Chipset, ECC support
Front Side Bus 66 and 100 MHz
- **BIOS**
Award System BIOS in Flash ROM with VGA BIOS
- **Clock/Calendar**
Realtime clock and calendar with battery backup
- **Bus Support**
PICMG (16 bit ISA / 32 bit PCI), internal PCI for LAN, IDE, AGP for VGA
- **VGA**
Chips 69000 AGP VGA/LCD with 2 MB
max. resolution/color/refresh rate
800x600, true color, 85Hz
1024x768, 64K, 85Hz
1280x1024, 256, 60 Hz
VGA driver for Windows95 / 98 / 2000 / NT4.0
- **LAN Controller**
Intel 82559 single Ethernet controller,
10 Base T / 100 Base TX support, full duplex, RJ45 port
- **IDE Controller**
Supports 4 enhanced IDE drives,
PIO Mode 4, DMA Mode 2 and Ultra DMA/33, can be switched off
- **FDD Controller**
Up to 2 drives for
360 KB / 720 KB / 1.44 MB / 1.2 MB / 2.88 MB, can be switched off
- **DiskOnChip Socket**
From 2 to 288 MB single-chip
- **Serial Port**
Two serial ports (RS232, 16C550 FIFO compatible)
can be switched off individually
- **Parallel Port**
One Centronics compatible parallel port
(SPP, ECP/EPP bidirectional), can be switched off
- **Watch-Dog Timer**
1 to 64-second timeout interval,
NMI or RESET, can be switched off
- **USB Port (2x)**
6-pin internal connector

- **Keyboard / Mouse Connector**
5-pin internal connector for keyboard
6-pin external Mini-DIN connector (PS/2)
for keyboard and mouse per Y-Cabel
- **System control**
Voltage control for the values Vcore, Vtt, +3.3V, +5V, +12V, -12V
1 x cooler turn around, 2 x temperature sensor
- **Standards**
PICMG 2.0 (PCI / ISA), PCI 2.1
- **Power Management**
Software controlled by BIOS
- **ISA MAX**
Maximize ISA signals to support ISA cards up to 20
- **Power Supply**
+5V / 20A (max.)
+12V / 500mA (max.)
-12V / 50mA (max.)
- **Dimensions**
Card full-length, 338 x 122 mm
- **Environment**
Storage Temperatures: -20° ~ 80°C
Operating Temperatures: 0° ~ 55°C (cooler fan required for CPU)
Relative Humidity: 10% ~ 90%, non-condensing

[Back](#)[Print](#)

Copyright © 2001 DSM Computer AG