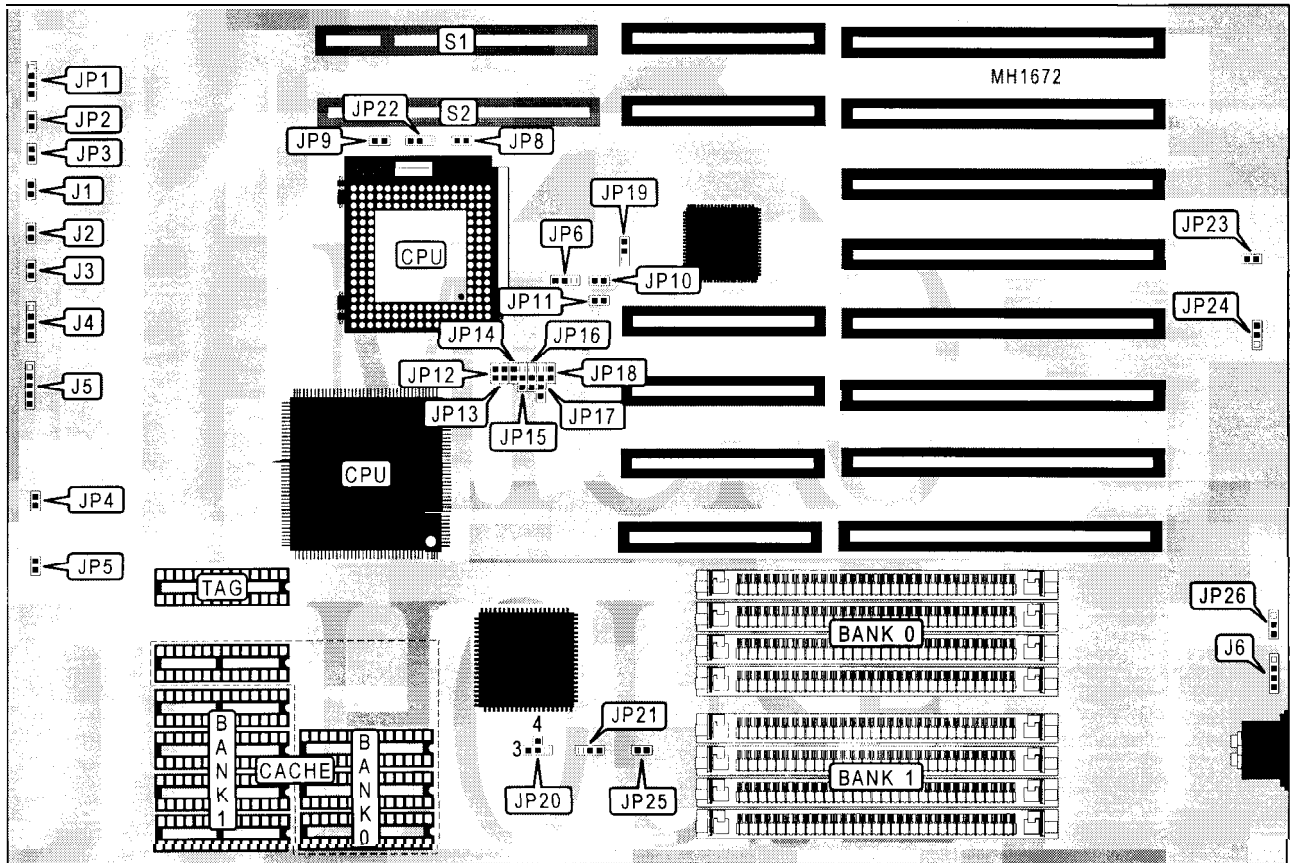


DIAMOND FLOWER, INC. 486-CCV (REV. A)

Processor 80486SX/80487SX/80486 DX/ODP486SX/80486 DX2
Processor Speed 25/33/40/50(internal) /50/66 (internal)MHz
Chip Set Contaq
Max. Onboard DRAM 32MB
Cache 64/128/256KB
BIOS AMi
Dimensions 330mm x 218mm
I/O Options 32-bit VESA slots (2)
NPU Options None



CONNECTIONS			
Purpose	Location	Purpose	Location
Reset switch	J2	Power LED & keylock	J5
Turbo LED	J3	External battery	J6
Speaker	J4	32-bit VESA slots (2)	S1 & S2

Continued on next page.

DIAMOND FLOWER, INC.
486-CCV (REV. A)

... continued from previous page

USER CONFIGURABLE SETTINGS		
Function	Jumper	Position
⊞ Factory configured - do not alter	J1	Closed
⊞ Factory configured - do not alter	JP1	pins 2 & 3 closed
⊞ Factory configured - do not alter	JP4	Open
⊞ Factory configured - do not alter	JP5	Open
⊞ Factory configured - do not alter	JP6	pins 1 & 2 closed
⊞ Factory configured - do not alter	JP17	pins 2 & 3 closed
⊞ Factory configured - do not alter	JP19	pins 1 & 2 closed
⊞ Monitor type select color	JP23	Closed
Monitor type select monochrome	JP23	Open
⊞ Factory configured - do not alter	JP24	pins 2 & 3 closed
⊞ Factory configured - do not alter	JP25	Closed
⊞ CMOS memory normal operation (Internal Battery)	JP26	pins 1 & 2 closed
CMOS memory normal operation (External Battery)	JP26	Open
CMOS memory clear	JP26	pins 2 & 3 closed

DRAM CONFIGURATION		
Size	Bank 0	Bank 1
1MB	(4) 256K x 9	NONE
2MB	(4) 256K x 9	(4) 256K x 9
4MB	(4) 1M x 9	NONE
5MB	(4) 256K x 9	(4) 1M x 9
8MB	(4) 1M x 9	(4) 1M x 9
16MB	(4) 4M x 9	NONE
17MB	(4) 256K x 9	(4) 4M x 9
20MB	(4) 1M x 9	(4) 4M x 9
32MB	(4) 4M x 9	(4) 4M x 9

CACHE CONFIGURATION				
Size	Max Cachable	Bank 0	Bank 1	TAG
64KB	16MB	(4) 8K x 8	(4) 8K x 8	8K x 8
128KB	32MB	(4) 32K x 8	NONE	8K x 8
256KB	32MB	(4) 32K x 8	(4) 32K x 8	32K x 8

CACHE JUMPER CONFIGURATION		
Size	JP20	JP21
64KB	pins 2 & 4 closed	pins 2 & 3 closed
128KB	pins 2 & 3 closed	pins 1 & 2 closed
256KB	pins 1 & 2 closed	pins 1 & 2 closed

Continued on next page.

DIAMOND FLOWER, INC.
486-CCV (REV. A)

... continued from previous page

CPU SPEED CONFIGURATION			
Speed	JP10	JP11	JP18
25MHz	Closed	Closed	Closed
33MHz	Closed	Open	Open
40MHz	Open	Closed	Open
50iMHz	Closed	Closed	Closed
50MHz	Open	Open	Open
66iMHz	Closed	Open	Open
Note: If you intend on using the VL-Bus slots and you are using a DX/50MHz (not the DX 2/50MHz) you must install 64KB or 256KB cache.			

CPU TYPE CONFIGURATION					
Type	JP12	JP13	JP14	JP15	JP16
80486SX	Open	Open	Open	Open	pins 1 & 2
80487SX	Open	Closed	Closed	pins 1 & 2	pins 2 & 3
80486DX	Open	Open	Closed	pins 2 & 3	pins 2 & 3
ODP486SX	Closed	Closed	Closed	pins 1 & 2	pins 2 & 3
80486DX2	Open	Open	Closed	pins 2 & 3	pins 2 & 3

VL-BUS VGA CARD CONFIGURATION			
Video Card	JP8	JP9	JP22
No VL-Bus Video card	Closed	Closed	pins 2 & 3
S3 VL-Bus Video card (either slot)	Closed	Closed	pins 1 & 2
Weitek P9000 installed in SL1	Open	Closed	pins 2 & 3
Weitek P9000 installed in SL2	Closed	Open	pins 2 & 3
VL-Bus boards not supported	Open	Open	pins 2 & 3

VESA WAIT STATE/BUS SPEED (ID2 & ID3) CONFIGURATION			
CPU speed	Wait states	JP2 (ID3)	JP3 (ID2)
≤ 33MHz	0 wait states	Open	Open
> 33MHz	1 wait state	Closed	Closed