

Windows[®] 7 and USB 3.0 driver installation

Based on the chipset specification, your system requires USB 3.0 drivers to be preloaded in order to use USB keyboard/mouse during Windows[®] 7 installation. This section is a guide on preloading USB 3.0 drivers and installing Windows[®] 7.

Method 1: Using SATA ODD & USB devices

Load USB 3.0 drivers using the ASUS support DVD and install Windows[®] 7 using a USB device.

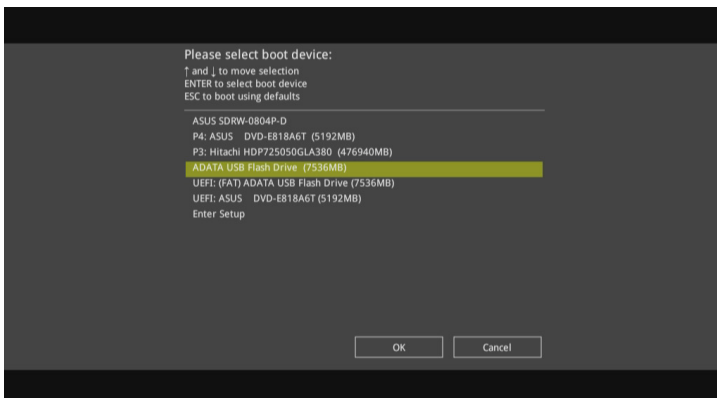
Requirement:

- 1 x ASUS support DVD
- 1 x Windows[®] 7 installation source
- 1 x SATA ODD
- 1 x USB device (ODD or storage)

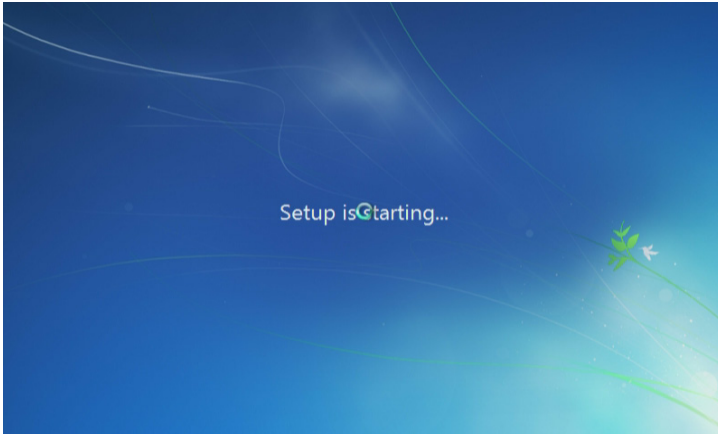


- The USB storage device requires 8 GB or more capacity. It is recommended to format the storage device before use.
- If you want to install Windows[®] 7 64-bit UEFI mode, use both a USB ODD and a SATA ODD.

1. Insert the Windows[®] 7 installation DVD into a USB ODD, or copy all files on the Windows[®] 7 installation DVD to a USB storage device on a working system.
2. Connect the USB ODD or USB storage device to your system.
3. Insert the ASUS support DVD into a SATA ODD on your system.
4. Power on your system and press F8 during POST (Power-On Self Test) to enter the boot screen.
5. Select the USB ODD or USB storage device as the boot device.



6. The USB 3.0 driver will be loaded automatically during installation startup.



The "Setup is starting..." screen will show up if the USB 3.0 driver is loaded correctly.

7. Follow the onscreen instructions to complete the Windows® 7 installation.

Method 2: Using a modified Windows® 7 ISO

Load USB 3.0 drivers and install Windows® 7 using a modified Windows® 7 installation DVD.

Requirement:

- 1 x ASUS support DVD
 - 1 x Windows® 7 installation source
 - 1 x Working system (PC or notebook)
 - 1 x SATA ODD
1. On your working system, create an ISO image file of the Windows® 7 installation source using a third-party ISO software.
 2. Copy both "Auto_Unattend.xml" and "Auto_Unattend" folder from the root directory of the ASUS supporting DVD to your system.
 3. Edit the ISO file and add both "Auto_Unattend.xml" and "Auto_Unattend" folder into the ISO file.
 4. Burn this ISO file onto an empty DVD to create a modified Windows® 7 installation DVD.
 5. Insert the modified Windows® 7 installation DVD into an ODD on your system.
 6. Power on your system and press F8 during POST (Power-On Self Test) to enter the boot screen.
 7. Select the ODD as the boot device.

- The USB 3.0 driver will be loaded automatically during installation startup.



The "Setup is starting..." screen will show up if the USB 3.0 driver is loaded correctly.

- Follow the onscreen instructions to complete the Windows® 7 installation.

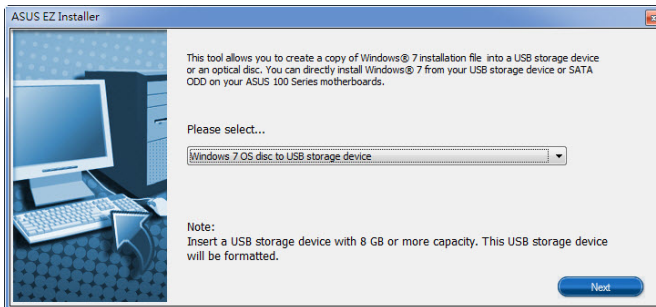
Method 3: Using ASUS EZ Installer

Use the ASUS EZ Installer to create a modified Windows® 7 installation source

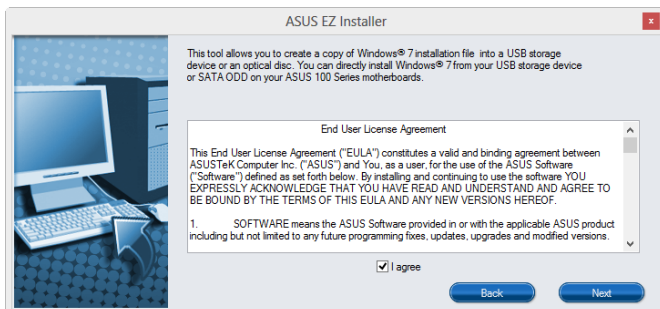
Requirement:

- 1 x ASUS support DVD
 - 1 x Windows® 7 installation DVD
 - 1 x Working system (PC or notebook)
 - 1 x SATA ODD
 - 1 x USB storage device (8 GB or more)
- Insert the Windows® 7 installation DVD.
 - Launch the ASUS EZ Installer located on the ASUS support DVD.
 - Select a method of creating a modified Windows® 7 installation file:
 - Windows® 7 OS disk to USB storage device

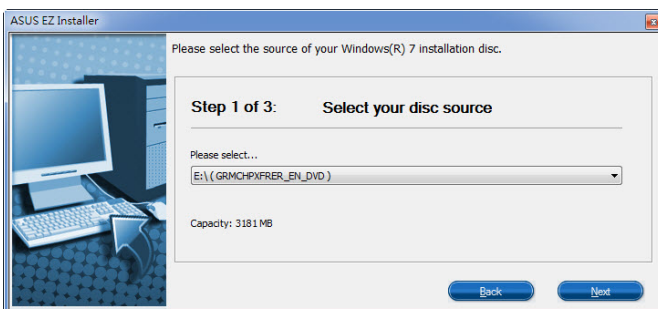
- Select **Windows 7 OS disk to USB storage device** then click **Next**.



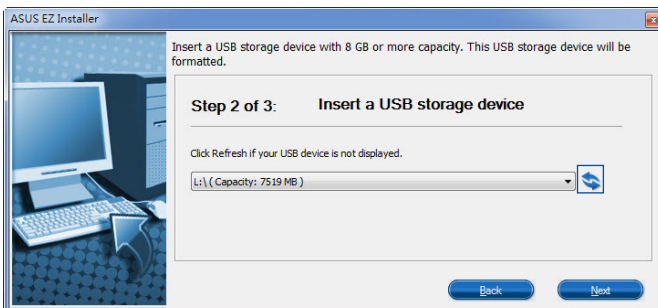
- Check **I agree** and then click **Next**.



- Select the source of the Windows® 7 installation disk then click **Next**.



- Select the USB storage device and click **next**.



Click the refresh icon  if the USB storage device is not displayed.

- Click **Yes** to clear the contents on the USB storage device and create a bootable USB device.



Make sure to backup contents on the USB storage device, as it will be formatted.

- Once completed, click **OK** to finish.

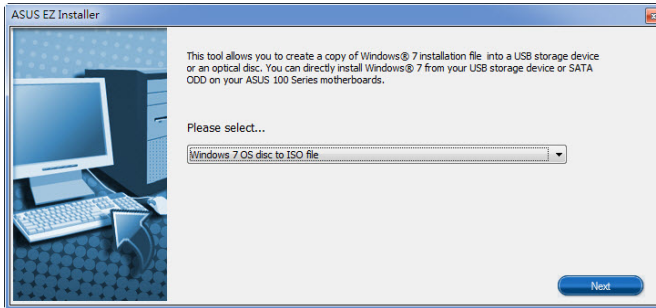
- Windows® 7 OS disk to ISO file



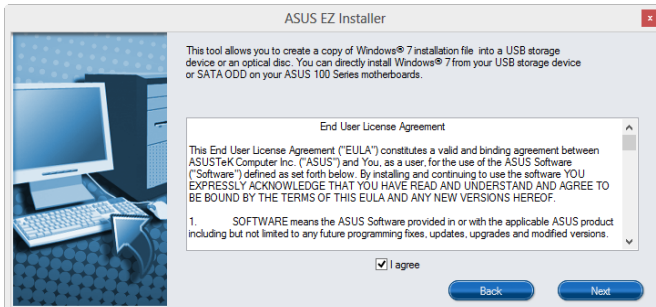
Before using this method to install Windows® 7:

- If you are using only one SATA HDD, ensure that your SATA HDD has more than twice the storage space (ISO file size +500MB).
- If you are using two or more SATA HDDs, ensure that at least two of your SATA HDDs have more than the storage space (ISO file size +500MB).

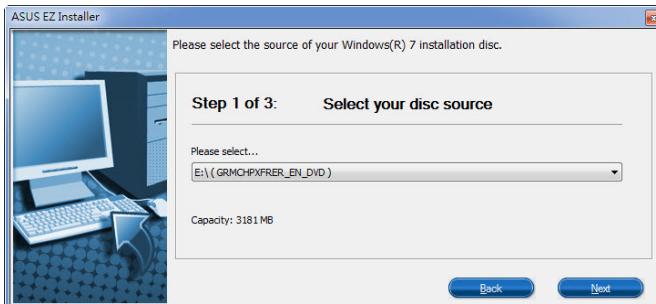
- Select **Windows 7 OS disk to ISO file** then click **Next**.



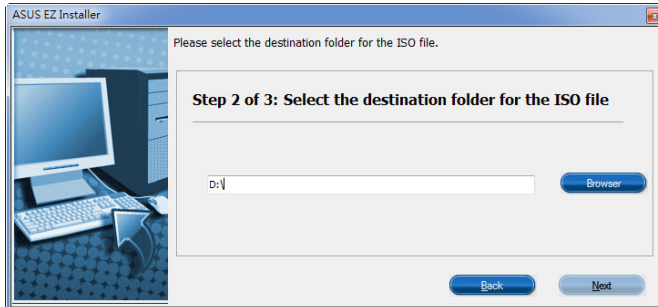
- Check **I agree** and then click **Next**.



- Select the source of the Windows® 7 installation disk then click **Next**.



- Select the folder to save the modified Windows® 7 installation ISO file and click **Next**.



- Once completed, click **OK** to finish.

- Burn this ISO file onto an empty DVD to create a modified Windows® 7 installation DVD.

4. Insert the modified Windows® 7 installation DVD into an ODD or connect the USB storage device with modified Windows® 7 installation files onto your system.
5. Power on your system and press F8 during POST (Power-On Self Test) to enter the boot screen.
6. Select the ODD or USB storage device as the boot device.
7. The USB 3.0 driver will be loaded automatically during installation startup.



The "Setup is starting..." screen will show up if the USB 3.0 driver is loaded correctly.

8. Follow the onscreen instructions to complete the Windows® 7 installation.