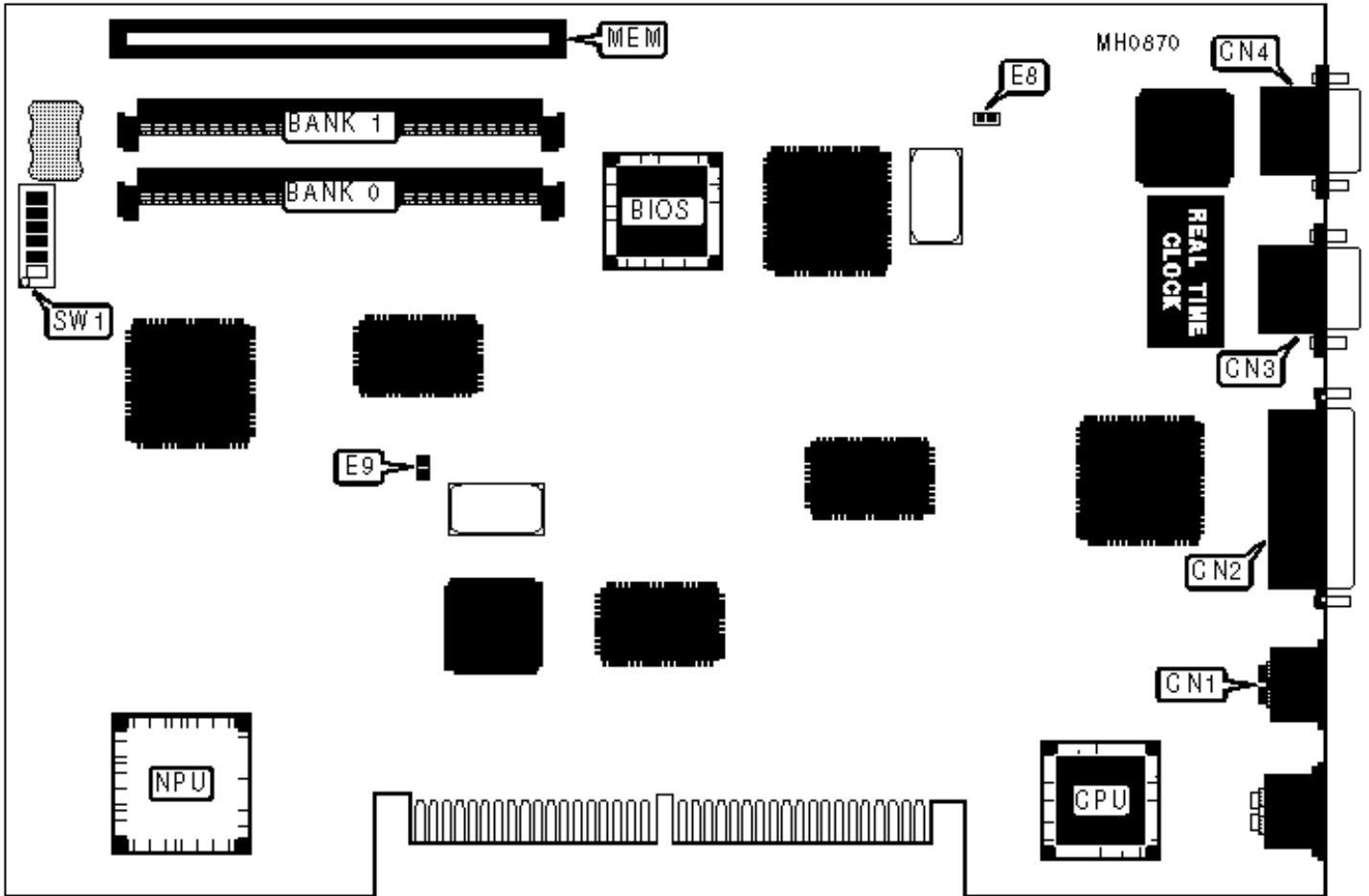


COMPAQ COMPUTER CORPORATION

DESKPRO 386N

Configuration



## CONNECTIONS

Purpose	Location	Purpose	Location
Bus mouse port	CN1	VGA port	CN4
Parallel port	CN2	Proprietary system memory card slot	MEM
Serial port	CN3		

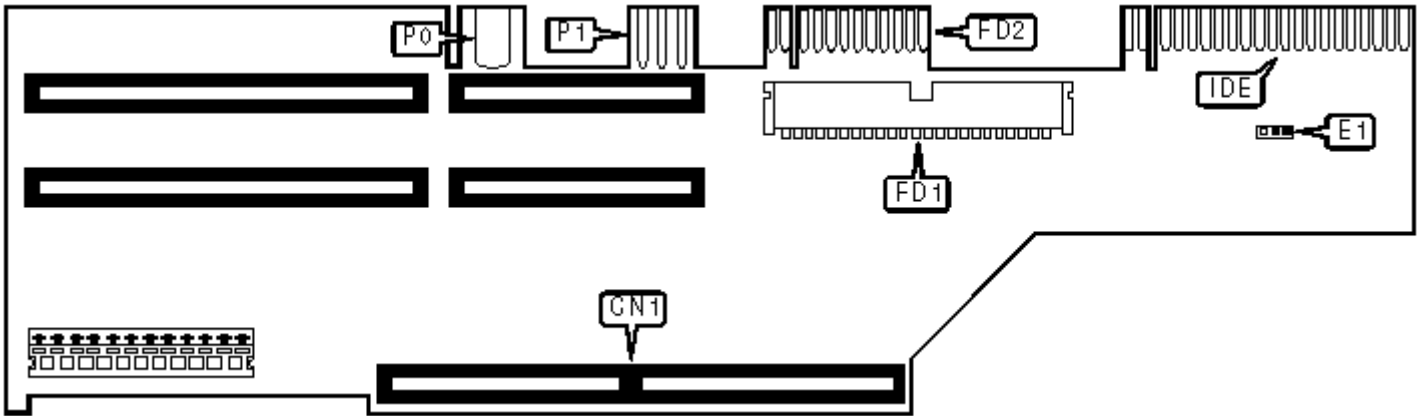
## USER CONFIGURABLE SETTINGS

Function	Jumper/Switch	Position
» Factory configured - do not alter	E8	Open
» Factory configured - do not alter	E9	Open
» Onboard VGA controller enabled	SW1/1	On
Onboard VGA controller disabled	SW1/1	Off
» Setup enabled (ROM resident)	SW1/2	On
Setup disabled (ROM resident)	SW1/2	Off
» External boot enabled	SW1/3	On
External boot disabled	SW1/3	Off
» Power-on password enabled	SW1/4	On
Power-on password disabled	SW1/4	Off
» Factory configured - do not alter	SW1/5	On
» Floppy drive write enabled	SW1/6	On
Floppy drive write disabled	SW1/6	Off

## DRAM CONFIGURATION

Size	Bank 0	Bank 1
1MB	(1) 1M x 9	NONE
2MB	(1) 1M x 9	(1) 1M x 9

4MB	(1) 4M x 9	NONE
8MB	(1) 4M x 9	(1) 4M x 9



### CONNECTIONS

Purpose	Location	Purpose	Location
CPU module	CN1	IDE interface	IDE
5.25 Floppy drive interface	FD1	Fan power	P0
3.5 Floppy drive interface/power	FD2	IDE drive/5.25 drive power	P1

### USER CONFIGURABLE SETTINGS

Function	Jumper	Position
» Fan speed select automatic (thermostat enabled)	E1	pins 2 & 3 closed
Fan speed select high (thermostat disabled)	E1	pins 1 & 2 closed