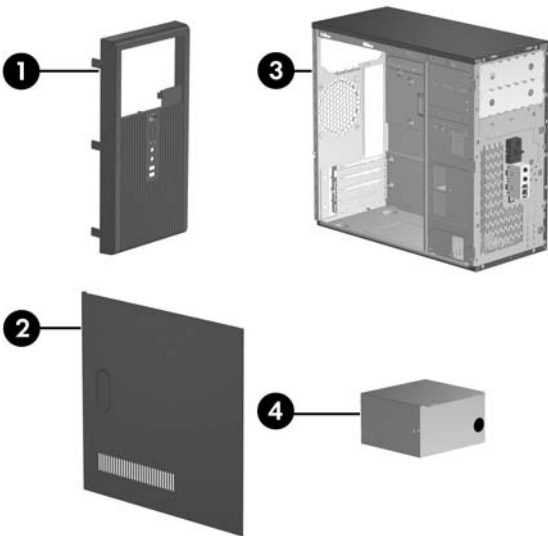


HP Compaq Business Desktop dx2200 Microtower Models

Illustrated Parts Map

Celeron and Pentium Processors



System Unit

1	Front bezel without bezel blank	410724-001
2	Access panel	410723-001
3	Chassis	not spared
4	Power supply, non-PFC	410719-001
4	Power supply, PFC	410720-001



Mass Storage Devices

1	Diskette drive, 3.5-inch, with mounting screws	392415-001
2	48X CD-ROM drive	397130-001
*	52X CD-ROM drive	413522-001
*	48X/32X/48X CD-RW drive	395272-001
*	48X/32X/48X+16X CD-RW/DVD-ROM drive	405425-001
*	16/48X DVD ROM Drive	405761-001
*	16X DVD +/- RW	405760-001
3	40-GB\7200 RM SATA hard drive, 1.5 Gb/s	416737-001
*	80-GB\7200 RPM SATA hard drive, 3.0 Gb/s	391945-001
*	160-GB\7200 RPM SATA hard drive, 3.0 Gb/s	391741-001
*	250-GB\7200 RPM SATA hard drive, 3.0 Gb/s	391937-001

*Not shown

© 2006 Hewlett-Packard Development Company, L.P.

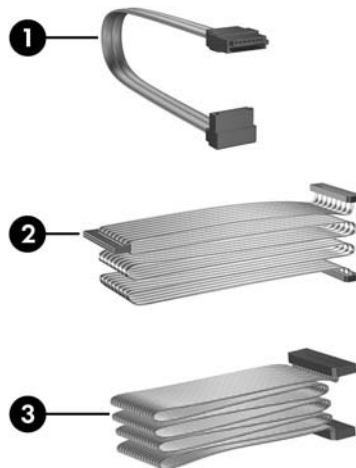
HP and the HP logo are trademarks of Hewlett-Packard Development Company, L.P.

Intel and Celeron are US registered trademarks of Intel Corporation. All other product names mentioned herein may be trademarks of their respective companies.

HP shall not be liable for technical or editorial errors or omissions contained herein. The information in this document is provided "as is" without warranty of any kind and is subject to change without notice. The warranties for HP products are set forth in the express limited warranty statements accompanying such products. **Nothing herein should be construed as constituting an additional warranty.**

1st Edition, March 2006

Document Part Number 415607-001



Cables

	Miscellaneous cable kit, includes:	410725-001
1	SATA HDD cable(K1D-1008060-M78)	
2	ODD cable (K12-1080104-M78)	
3	Diskette drive cable (385981-002)	
*	Front USB cable with mounting screw	416164-001
*	Power switch with cable and switch mounting bracket	416163-001

*Not shown

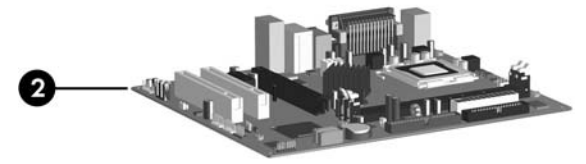
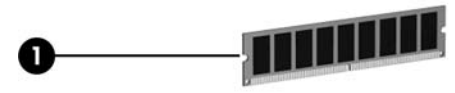
Keyboards (not illustrated)

PS/2, Basic		382925-xxx	
USB, Basic		382926-xxx	
Belgian	-181	LA Spanish	-161
BHCSY*	-B41	Norwegian	-091
Brazilian Portuguese	-201	PRC	-AA1
Czech	-221	Portuguese	-131
Danish	-081	Romanian	-271
Finnish	-351	Slovakian	-231
French	-051	Spanish	-071
French Arabic	-DE1	Swedish	-101
French Canadian	-121	Swiss	-111
German	-041	Taiwanese	-AB1
Hebrew	-BB1	Thai	-281
Hungarian	-211	Turkish	-141
International	-B31	Ukrainian	-BD1
Italian	-061	U.S.	-001
Korean (Hanguel)	-AD1	U.K.	-031

*Bosnia-Herzegovina, Croatia, Slovenia, and Yugoslavia

PS/2, Basic, 105 key		396215-xxx	
USB, Basic, 105 key		396217-xxx	
Arabic*	-171	Russian	-251
Greek	-151		

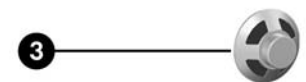
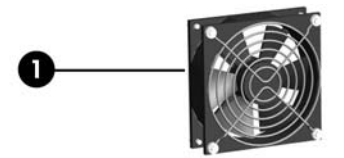
*Only available in PS/2 configuration (396215-xxx)



Standard and Optional Boards

Memory modules		
1	256 MB, PC2-5300	396519-001
*	512 MB, PC2-5300	396520-001
*	1 GB, PC2-5300	398038-001
2	System board with alcohol pad and thermal grease	410716-001
Intel Celeron D Processors, 533 MHz FSB, 256 KB, with alcohol pad and thermal grease		
*	#336, 2.8GHz, E0 stepping	416337-001
	#346, 3.06 GHz, E0 stepping	416338-001
	#331, 2.66 GHz, G-1 stepping	391940-001
*	#336, 2.8 GHz, G-1 stepping	391941-001
*	#341, 2.93 GHz, G-1 stepping	405692-001
*	#346, 3.06 GHz, G-1 stepping	405693-001
*	#351, 3.2 GHz, G-1 stepping	382503-001
Intel Pentium Processors with alcohol pad and thermal grease		
*	#524, 3.06 GHz, 533 MHz FSB, 1MB, non-hyper-threading	412985-001
	#524, 3.06 GHz, 533 MHz FSB, Mainstream	418626-001
*	#521, 2.8 GHz, 800 MHz FSB, Mainstream	394643-001
	#620, 2.8 GHz, 800 MHz FSB, Mainstream	418627-001
*	#630, 3.0 GHz, 800 MHz FSB, Mainstream	392273-001
*	#650, 3.2 GHz, 800 MHz FSB, Mainstream	384786-001
*	#650, 3.4 GHz, 800 MHz FSB, Mainstream	384787-001
Other boards		
*	Graphics PCIe, 128 MB, FH	398332-001

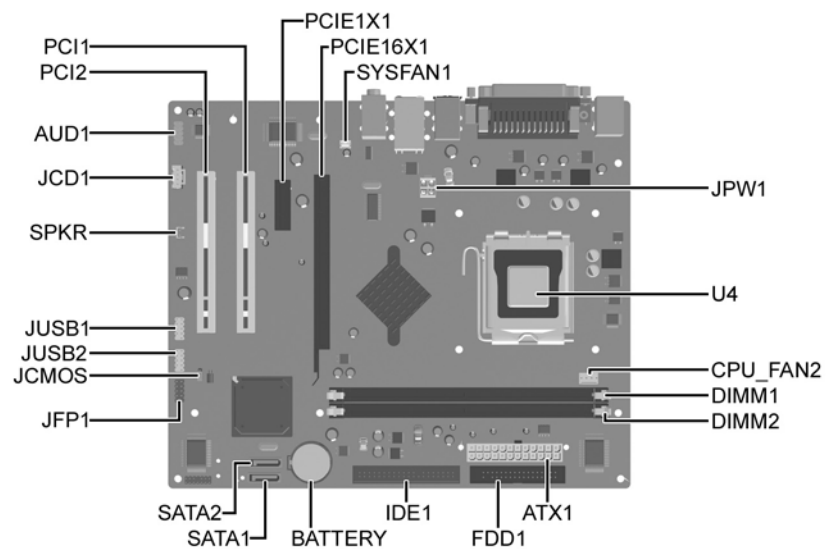
* Not shown



Miscellaneous Parts

Miscellaneous parts kit, includes:		410717-001
*	3.5" Diskette drive bezel (414218-001)	
*	3.5" Bezel blank (414219-001)	
*	5.25" Bezel blank (166775-001)	
*	#6-32 x .187 Taptite, hitop screw with serrations (6 ea) (192308-003)	
	#6-32 x .187 Taptite, hitop screw with serrations (6 ea) (192308-001)	
*	#6-32 x .250 Taptite, hitop screw with captive flat washer (2 ea) (114399-067-001)	
*	M3 x 5 mm Taptite hitop screw with serrations (4 ea) (247348-001)	
*	Slot cover (391106-0010) (2 ea)	
1	Chassis fan with mounting screws	410721-001
2	Heatsink with alcohol pad and factory-applied thermal grease	410718-001
*	Mouse, PS2, scroll type	390937-001
3	Internal speaker	410722-001
*	Mouse, USB, scroll type	390939-001
*	Mouse, optical	390938-001
*	Battery, real-time clock	153099-001
*	Foot (4 ea)	370708-001
*	DVI-I to VGA adapter	202997-001

*Not shown



System Board Connectors and Jumpers (position of some untitled components may vary in location)

ATX1	Main power	JUSB1	Front USB
AUD1	Front audio	JUSB2	Internal USB for media reader
BATTERY	RTC battery	PCIE16X1	PCIe X16
CPU FAN	Processor fan	PCIE1X1	PCIe X1
DIMM1	Memory module 1	PCI1	PCI slot 1
DIMM2	Memory module 2	PCI2	PCI slot 2
FDD1	Diskette drive	SATA1	SATA primary
IDE1	Optical drive	SATA2	SATA secondary
JCD1	CD audio	SPKR	speaker
JCMOS	CMOS	SYSFAN1	Chassis fan
JFP1	Front power switch/LED	U4	Processor
JPW1	CPU main power		

CMOS

Status	Jumper Setting	Notes
Normal	2-3	Default
Clear	1-2	leave on for 5 seconds

System Hardware Interrupts

IRQ	System Function	IRQ	System Function
0	Timer Interrupt	8	Real-Time Clock
1	Keyboard	9	Unused
2	Interrupt Controller Cascade	10	Unused, available for PCI
3	Serial Port (COM B)	11	Unused, available for PCI
4	Serial Port (COM A)	12	Mouse
5	Unused, available for PCI	13	Coprocessor
6	Diskette Drive	14	Primary ATA (IDE) Controller
7	Parallel Port (LPT 1)	15	Secondary ATA (IDE) Controller

Clearing CMOS

The computer's configuration (CMOS) may occasionally be corrupted. If it is, it is necessary to clear the CMOS memory using by performing the following procedure:

- CAUTION:** The power cord must be disconnected from the power source before changing the jumper setting. (NOTE: All LEDs on the board should be OFF). Failure to do so may damage the system board
1. Turn off the computer and any external devices, then disconnect the power cord from the power outlet.
 2. Remove the access panel.
 3. Locate jumper CMOS and move the jumper from pins 2-3 to pins 1-2.
 4. Leave the jumper on pins 1-2 for 5 seconds.
 5. Move the jumper back to pins 2-3.
 6. Replace the access panel.
 7. Connect the power cord to the power outlet.
 8. Turn on the computer, allow it to start.

Diagnostic LEDs

LED	Color	LED Activity	State/Message
Power	Green	On	Computer on
Power	Green	1 blink every 2 seconds	(S1) Normal Suspend Mode
Power	Green	1 blink every 2 seconds	(S3) Suspend to RAM
Power	Clear	Off	(S5) Computer off
Power	Green	Glows for 3 seconds followed by a 1 second pause.	CPU thermal shutdown
Power	Green	1 blink every second for 5 seconds, then 2 second pause.	No memory installed or improperly installed (pre-video memory error)
Power	Green	1 blink every second for 6 seconds, then 2 second pause.	Graphics card error (pre-video graphics error)
None	None	No LED but rapidly inclining beeps	Incorrect system password.
None	None	No LED but rapidly declining beeps	Correct system password.
Hard Drive	Green	Blinking	Hard drive activity

Computer Setup (F10) Utility Features (not all features may be available)

System Information	Product Name SKU Number Processor Type Processor speed CPU ID/Patch ID Cache Size Memory Size System ROM Integrated MAC Address UUID System Serial Number Asset Tracking Number Asset Tag Number
Standard CMOS Features	Set Date Set Time PATA Controller PATA Channel 0 Master PATA Channel 0 Slave SATA Controller SATA Channel 1 Master SATA Channel 2 Master Floppy Drive Controller Drive A Halt On POST Delay
Advanced BIOS Features	Device Boot Disabling F9 Boot Menu Removable Device Boot Priority Hard Disk Boot Sequence Optical Drive Boot Sequence Network Boot Sequence First through Fourth Boot Devices Boot Up NumLock Status Security Option APIC Mode MPS Version Control for OS BIOS Write Protection Execute disable bit Enhanced Intel SpeedStep Technology Hyper-Threading Technology
Advanced Chipset Features	UMA Frame Buffer Init Display First (VGA Setting) Surroundview AutoDetect PCI CLK (VGA Setting)
Integrated Peripherals	Onboard HD Audio OnChip USB Controller USB Legacy Support Onboard LAN Onboard LAN Boot ROM Onboard Serial Port Onboard Parallel Port Parallel Port Mode ECP Mode Use DMA
Power Management Setup	After AC Power Loss ACPI Suspend type External Modem S5 Wake-up RTC Alarm Resume Date (of Month) Alarm Resume Time (hh:mm:ss)
PnP/PCI Configuration	Reset Configuration Data Resources Controlled By IRQ Resources Maximum Payload Size
PC Health Status	System Fan Fail Check Smart Fan Function Current CPU Temperature Current System Temperature Current CPU Fan Speed Current System Fan Speed Vcore +12V VCC5 +3.3V VBAT (V) 3VSB (V)
Load Optimized Defaults	
Set Supervisor Password	
Set User Password	
Save & Exit Setup	
Exit Without Saving	

Note: See Computer Setup (F10) Utility Guide on the Documentation Library CD.