



# AT8 32X

---

*AMD Athlon 64x2/64FX/64 System Board  
Socket 939*

*User's Manual*

---

---

## **Copyright and Warranty Notice**

The information in this document is subject to change without notice and does not represent a commitment on part of the vendor, who assumes no liability or responsibility for any errors that may appear in this manual.

No warranty or representation, either expressed or implied, is made with respect to the quality, accuracy or fitness for any particular part of this document. In no event shall the manufacturer be liable for direct, indirect, special, incidental or consequential damages arising from any defect or error in this manual or product.

Product names appearing in this manual are for identification purpose only and trademarks and product names or brand names appearing in this document are the property of their respective owners.

This document contains materials protected under International Copyright Laws. All rights reserved. No part of this manual may be reproduced, transmitted or transcribed without the expressed written permission of the manufacturer and authors of this manual.

If you do not properly set the motherboard settings, causing the motherboard to malfunction or fail, we cannot guarantee any responsibility.

---

---

# Table of Contents

---

<b>Chapter 1. Introduction .....</b>	<b>1-1</b>
1-1. Features & Specifications .....	1-1
1-2. Layout Diagram .....	1-3
<b>Chapter 2. Hardware Setup.....</b>	<b>2-1</b>
2-1. Install The Motherboard.....	2-1
2-2. Install CPU, Heatsink and Fan Assembly.....	2-2
2-3. Install System Memory .....	2-4
2-4. Install Graphics Card(s) .....	2-6
CrossFire Mode:.....	2-7
2-5. Connectors, Headers and Switches .....	2-9
(1). ATX Power Input Connectors .....	2-9
(2). FAN Power Connectors .....	2-10
(3). GURU Clock Connection Header.....	2-10
(4). CMOS Memory Clearing Header .....	2-11
(5). Internal Audio Connectors .....	2-11
(6). Front Panel Switches & Indicators Headers .....	2-12
(7). Wake-up Header.....	2-13
(8). Floppy and IDE Disk Drive Connectors.....	2-14
(9). Serial ATA Connectors.....	2-15
(10). PCI Express x1 Slots.....	2-16
(11). PCI Express x16 Slot .....	2-16
(12). Additional USB Port Headers.....	2-17
(13). Additional IEEE1394 Port Headers .....	2-17
(14). Front Panel Audio Connection Header .....	2-18
(15). POST Code Display .....	2-19
(16). Back Panel Connectors .....	2-20
<b>Chapter 3. BIOS Setup.....</b>	<b>3-1</b>
3-1. $\mu$ Guru™ Utility .....	3-2
3-2. Standard CMOS Features.....	3-9
3-3. Advanced BIOS Features.....	3-12
3-4. Advanced Chipset Features.....	3-14
3-5. Integrated Peripherals .....	3-18
3-6. Power Management Setup .....	3-21

---

---

3-7.	PnP/PCI Configurations.....	3-23
3-8.	Load Fail-Safe Defaults .....	3-24
3-9.	Load Optimized Defaults .....	3-24
3-10.	Set Password .....	3-24
3-11.	Save & Exit Setup .....	3-24
3-12.	Exit Without Saving.....	3-24
<i>Appendix A.</i>	<i>Install Audio Driver .....</i>	<i>A-1</i>
<i>Appendix B.</i>	<i>Install Realtek LAN Driver.....</i>	<i>B-1</i>
<i>Appendix C.</i>	<i>Install ULi1575 SATA RAID Driver.....</i>	<i>C-1</i>
<i>Appendix D.</i>	<i>Install Sil3132 SATA Driver.....</i>	<i>D-1</i>
<i>Appendix E.</i>	<i>Install Cool'n'Quiet Driver .....</i>	<i>E-1</i>
<i>Appendix F.</i>	<i>Install USB 2.0 Driver .....</i>	<i>F-1</i>
<i>Appendix G.</i>	<i>Install ABIT µGuru Utility.....</i>	<i>G-1</i>
<i>Appendix H.</i>	<i>POST Code Definition.....</i>	<i>H-1</i>
<i>Appendix I.</i>	<i>Troubleshooting (Need Assistance?).....</i>	<i>I-1</i>
<i>Appendix J.</i>	<i>How to Get Technical Support .....</i>	<i>J-1</i>

## Chapter 1. Introduction

---

### 1-1. Features & Specifications

---

#### 1. CPU

- Socket 939 for AMD Athlon 64x2/ 64FX/ 64 Processors with 2000MT/s System Bus
- Supports AMD K8 CPU Cool 'n' Quiet Technology

#### 2. Chipset

- ATI RD580 RADEON Xpress 3200 chip
- ULI 1575 SB chip
- Support Dual Full PCIE x16 bandwidth to graphic

#### 3. Memory

- Four 184-pin DIMM sockets
- Supports Dual Channel DDR 400/333/266 un-buffered ECC/Non-ECC memory
- Supports maximum memory capacity up to 8GB

#### 4. Graphics

- Two PCI-Express X16 slots support Dual Graphic card by ATI CrossFire™ Technology
- Two X16 graphics links for high performance Crossfire configurations

#### 5. ABIT Engineered

- ABIT Silent OTES Technology
- ABIT μGuru™ Technology

#### 6. Serial ATA

- 4x SATA 3.0 Gb/s (RAID 0/1/0+1/5)
- Supports SATA AHCI, providing native command queuing and native hot plug
- Onboard Silicon Image Sil3132 PCIE RAID controller, supports 2x 3Gb/s SATA ports

#### 7. LAN

- Onboard 10/100/1000M PCIE controller

#### 8. IEEE 1394

- Supports IEEE1394 by PCI controller

#### 9. Audio

- Onboard 7.1 CH HD Audio CODEC
- Optical S/PDIF Output/Input
- Supports auto jack sensing

## 10. Internal I/O Connectors

- 2x PCI-E X16 slot
- 2x PCI-E X1 slots
- 2x PCI slots
- 1x Floppy port supports up to 2.88MB
- 2x Ultra DMA 133/100/66/33 IDE connectors
- 6x SATA 3G connectors
- 2x USB 2.0 headers
- 1x IEEE 1394 header
- 1x FP-Audio header
- 1x CD-IN

## 11. Back Panel I/O

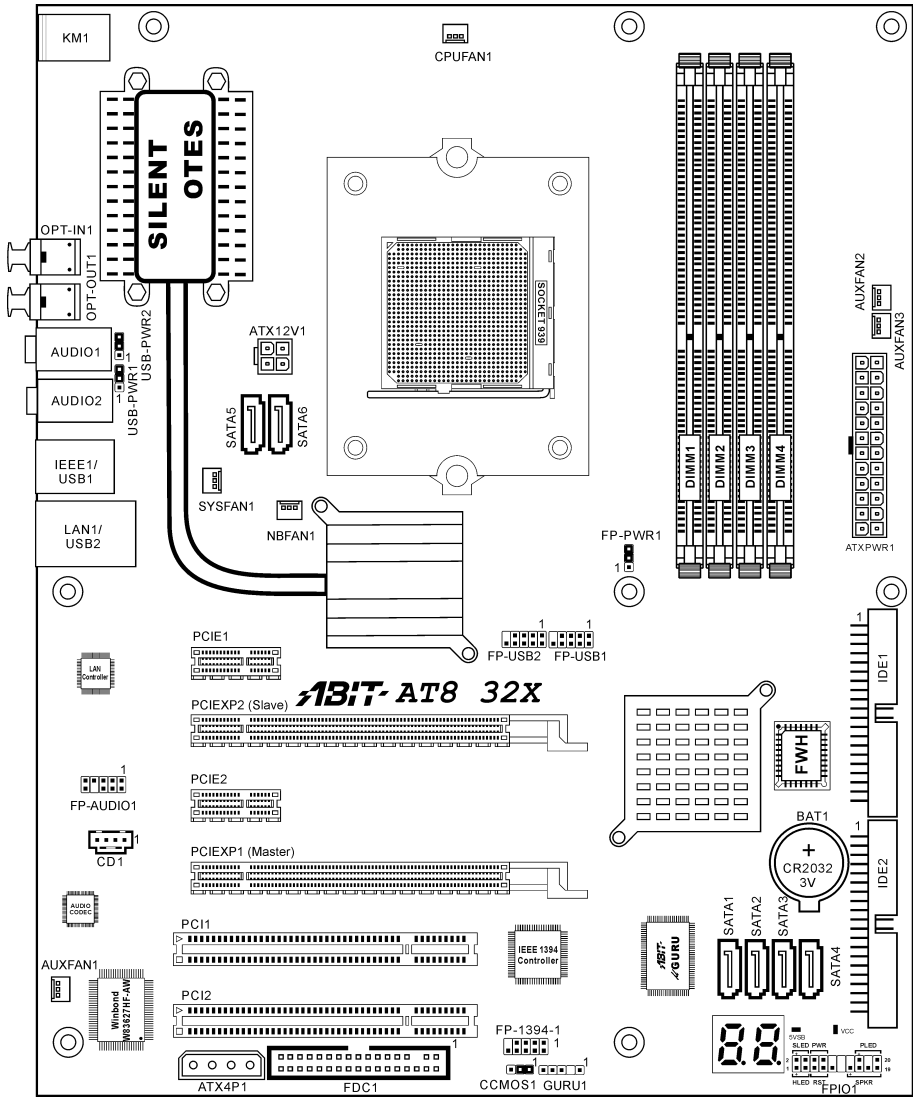
- 1x PS/2 keyboard connector
- 1x PS/2 mouse connector
- 1x OPT-OUT1 connector
- 1x OPT-IN1 connector
- 1x AUDIO1 connector (Surround-Left / Surround-Right, Rear-Left / Rear-Right, Center/Subwoofer)
- 1x AUDIO2 connector (Mic-In, Line-In, Line-Out)
- 4x USB 2.0 connector
- 1x RJ-45 LAN connector
- 1x IEEE1394 port

## 12. Miscellaneous

- ATX form factor: 305 x 245 mm

\* Specifications and information contained herein are subject to change without notice.

# 1-2. Layout Diagram







## Chapter 2. Hardware Setup

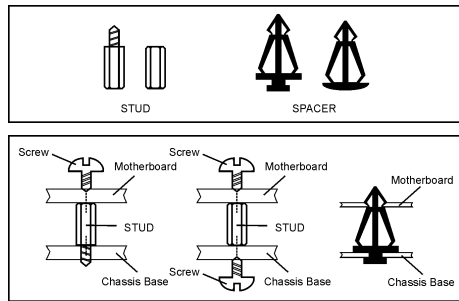
**Before the Installation:** Turn off the power supply switch (fully turn off the +5V standby power), or disconnect the power cord before installing or unplugging any connectors or add-on cards. Failing to do so may cause the motherboard components or add-on cards to malfunction or damaged.

### 2-1. Install The Motherboard

Most computer chassis have a base with many mounting holes to allow a motherboard to be securely attached and at the same time, prevented from short circuits. There are two ways to attach the motherboard to the chassis base:

1. use with studs
2. or use with spacers

In principle, the best way to attach the board is to studs. Only if you are unable to do this should you attach the board with spacers. Line up the holes on the board with the mounting holes on the chassis. If the holes line up and there are screw holes, you can attach the board with studs. If the holes line up and there are only slots, you can only attach with spacers. Take the tip of the spacers and insert them into the slots. After doing this to all the slots, you can slide the board into position aligned with slots. After the board has been positioned, check to make sure everything is OK before putting the chassis back on.

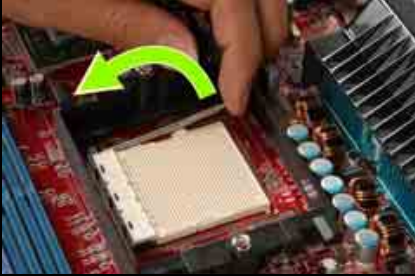


**ATTENTION:** To prevent shorting the PCB circuit, please REMOVE the metal studs or spacers if they are already fastened on the chassis base and are without mounting-holes on the motherboard to align with.

## 2-2. Install CPU, Heatsink and Fan Assembly

*Please pay attention to the following notices before installing the CPU and heatsink/fan assembly.*

1. Always use the processor with the Heatsink and Fan Assembly installed.
2. Do not touch the pins on the processor.
3. If you ever need to reinstall the Heatsink and fan Assembly, please clean the heatsink surface and apply new thermal interface material first.



1. Pull out the socket locking lever slightly, then lift it up.



2. Align the corner with triangle mark of the processor with the marking on the motherboard, and then place the processor vertical down into the socket.



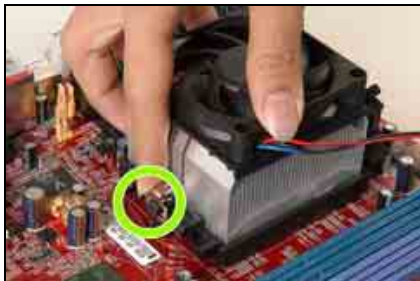
3. Lower the locking lever to the fully locked position.



4. Apply thermal interface material.



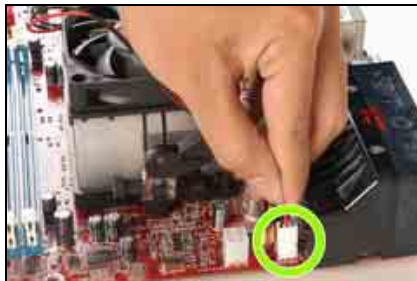
5. Place the heatsink and fan assembly onto the retention frame. Match the heatsink clip with the socket mounting lug. Hook the spring clip to the mounting lug.



6. On the other side, push the retention clip straight down to lock into the plastic lug on the retention frame.



7. Turn the cam lever to lock into the retention frame.



8. Attach the four-pin power plug from the heatsink and fan assembly to the CPU FAN connector.

*For detailed information on how to install your heatsink and fan assembly, please refer to the instruction manual that came packed with the heatsink and fan assembly you bought.*

## 2-3. Install System Memory

This motherboard provides four 184-pin DDR DIMM sockets for Single/Dual Channel DDR 400/333/200 memory modules with memory expansion size up to 8GB.

**Table 2-1. Valid Memory Configurations**

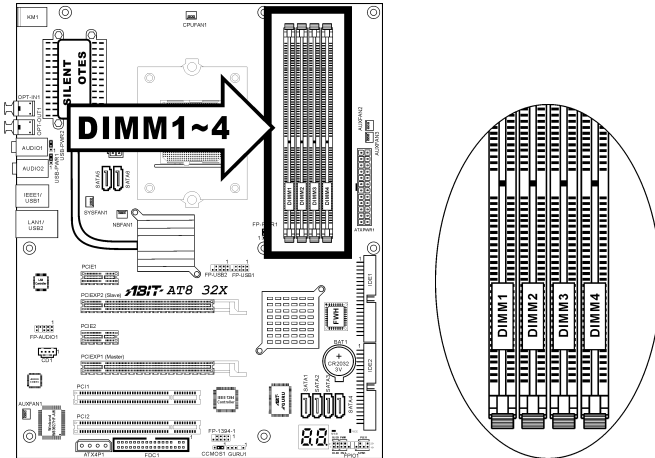
Bank	Memory Module	Total Memory
Bank 0, 1 (DIMM1)	256, 512MB, 1GB, 2GB	256MB ~ 2GB
Bank 2, 3 (DIMM2)	256, 512MB, 1GB, 2GB	256MB ~ 2GB
Bank 4, 5 (DIMM3)	256, 512MB, 1GB, 2GB	256MB ~ 2GB
Bank 6, 7 (DIMM4)	256, 512MB, 1GB, 2GB	256MB ~ 2GB
<b>Total System Memory</b>		256MB ~ 8GB

**Table 2-2. Unbuffered DIMM Support For AMD 939-pin Processor**

Data Bus	DIMM1	DIMM2	DIMM3	DIMM4	Default Setting	
					1T	2T
64-bits (Single Channel)	Single rank	N/A	Empty	N/A	DDR400	DDR400
	Double rank	N/A	Empty	N/A	DDR400	DDR400
	Empty	N/A	Single rank	N/A	DDR333	DDR333
	Empty	N/A	Double rank	N/A	DDR400	DDR400
	Single rank	N/A	Single rank	N/A	DDR333	DDR400
	Single rank	N/A	Double rank	N/A	DDR200	DDR400
	Double rank	N/A	Single rank	N/A	DDR200	DDR400
	Double rank	N/A	Double rank	N/A	DDR200	DDR333
128-bits (Dual Channel)	Single rank	Single rank	Empty	Empty	DDR400	DDR400
	Double rank	Double rank	Empty	Empty	DDR400	DDR400
	Empty	Empty	Single rank	Single rank	DDR333	DDR333
	Empty	Empty	Double rank	Double rank	DDR400	DDR400
	Single rank	Single rank	Single rank	Single rank	DDR333	DDR400
	Single rank	Single rank	Double rank	Double rank	DDR200	DDR400
	Double rank	Double rank	Single rank	Single rank	DDR200	DDR400
	Double rank	Double rank	Double rank	Double rank	DDR200	DDR333

To reach the performance of Dual Channel DDR, the following rules must be obeyed:

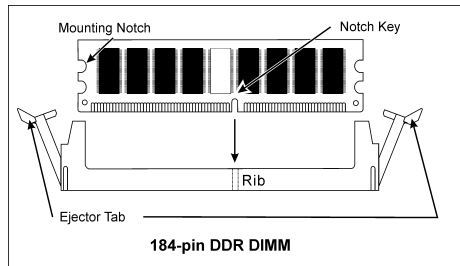
- **When installing TWO DIMM modules:** Install DIMM modules of the same type and size for slots [DIMM1]+[DIMM2] or slots [DIMM3]+[DIMM4].
- **When installing FOUR DIMM modules:** Install DIMM modules of the same type and size for slots [DIMM1]+[DIMM2], and slots [DIMM3]+[DIMM4].



**NOTE:** Usually there is no hardware or BIOS setup requires after adding or removing memory modules, but you will have to clear the CMOS memory first if any memory module related problem occurs.

Power off the computer and unplug the AC power cord before installing or removing memory modules.

1. Locate the DIMM slot on the board.
2. Hold two edges of the DIMM module carefully, keep away of touching its connectors.
3. Align the notch key on the module with the rib on the slot.
4. Firmly press the module into the slots until the ejector tabs on both sides of the slot automatically snaps into the mounting notch. Do not force the DIMM module in with extra force as the DIMM module only fit in one direction.
5. To remove the DIMM modules, push the two ejector tabs on the slot outward simultaneously, and then pull out the DIMM module.

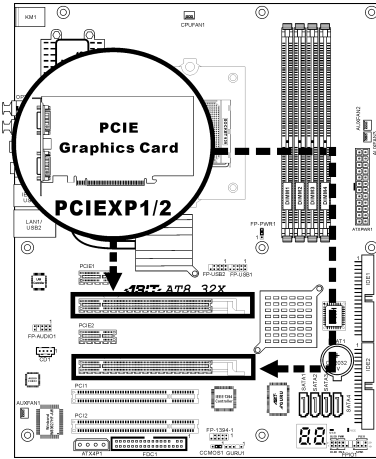


**ATTENTION:** Static electricity can damage the electronic components of the computer or optional boards. Before starting these procedures, ensure that you are discharged of static electricity by touching a grounded metal object briefly.

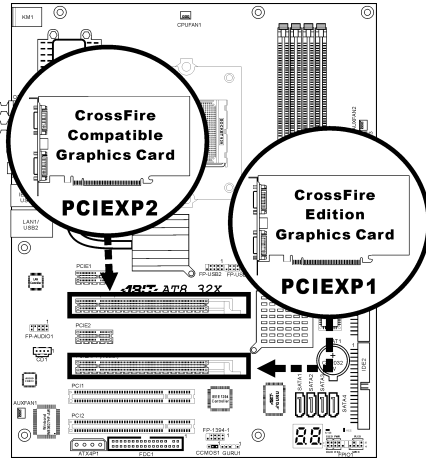
## 2-4. Install Graphics Card(s)

This motherboard supports two graphics modes: Normal Mode for single PCIe graphics card and CrossFire Mode for one CrossFire™ Edition graphics card and one CrossFire™ compatible graphics card.

**NOTE:** The ATI CrossFire™ technology currently supports the Windows XP Service Pack 2 operating system only.



**Normal Mode:** Insert your PCIe graphics card into PCIEXP1 or PCIEXP2 slot.



**CrossFire Mode:** Insert one CrossFire™ Edition graphics card into PCIEXP1 (Master) slot and one CrossFire™ compatible graphics card into PCIEXP2 (Slave) slots.

**CrossFire Mode:**

To enable CrossFire Mode, you will need to:

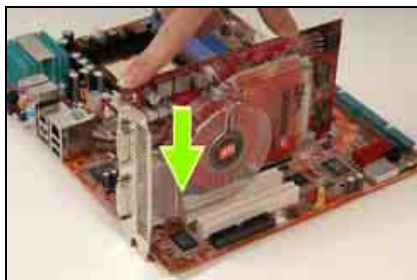
- Prepare one CrossFire™ Edition graphics card and one CrossFire™ compatible graphics card.
- Make sure the graphics card driver supports the ATI CrossFire™ technology. Download the latest driver from ATI website ([www.ati.com](http://www.ati.com)).
- Make sure your power supply unit is sufficient to provide the minimum power required.



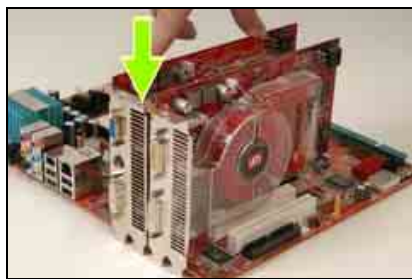
1. You need a CrossFire™ Edition ATI graphics card to enable the CrossFire mode. Note that there's a unique CrossFire™ DMS-59™ connector on the bracket of a CrossFire™ Edition graphics card.



3. You also need a CrossFire™ compatible PCI Express graphics card for the slave slot. Note that there's no CrossFire™ DMS-59™ connector on the bracket of the slave card.



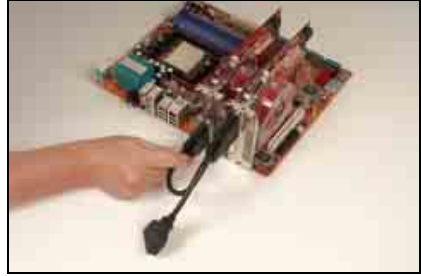
2. Insert the CrossFire™ Edition graphics card into PCIEXP1 (Master) slots on the motherboard.



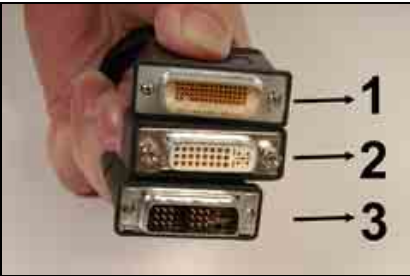
4. Insert the CrossFire™ compatible PCI Express graphics into the PCIEXP2 (Slave) slot.



5. Locate the DMS-59™ to interconnect cable in the package.



8. Connect the DVI-I Male connector on the cable to the DVI-I connector on the CrossFire™ compatible PCI Express graphics card. Then connect the DVI-I Female connector on the cable to your monitor.

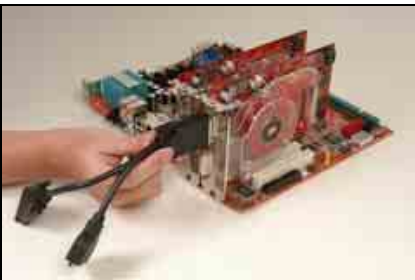


6. There are 3 connectors on the DMS-59™ interconnect cable as shown in above illustration:

Connector 1 is a DMS-59™ Male connector;

Connector 2 is a DVI-I Female connector;

Connector 3 is a DVI-I Male connector.



7. Connect the DMS-59™ Male connector on the cable to the DMS-59™ connector on the CrossFire™ Edition graphics card.



## 2-5. Connectors, Headers and Switches

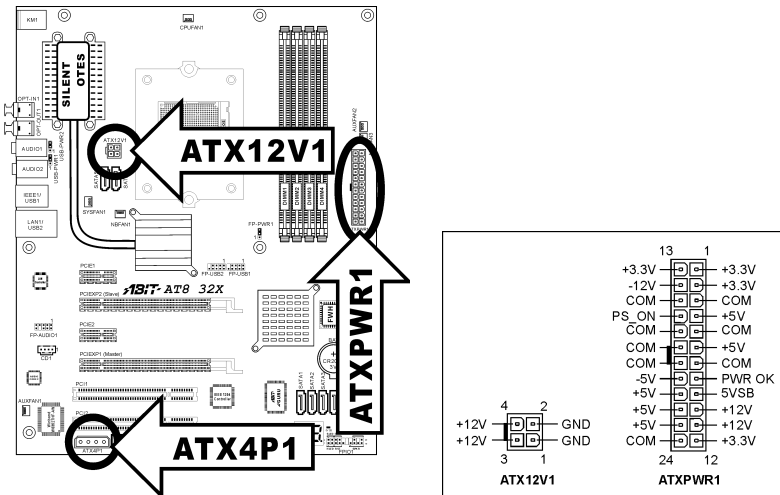
Here we will show you all of the connectors, headers and switches, and how to connect them. Please read the entire section for necessary information before attempting to finish all the hardware installation inside the computer chassis. A complete enlarged layout diagram is shown in Chapter 1 for all the positions of connectors and headers on the board that you may refer to.

**WARNING:** Always power off the computer and unplug the AC power cord before adding or removing any peripheral or component. Failing to do so may cause severe damage to your motherboard and/or peripherals. Plug in the AC power cord only after you have carefully checked everything.

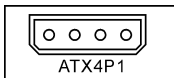
### (1). ATX Power Input Connectors

This motherboard provides two power connectors to connect ATX12V power supplier.

**NOTE:** This 24-pin power connector “ATXPWR1” is compliant to the former 20-pin type. Pay attention to the orientation when attaching the power cord. (Pin-11, 12, 23, and 24 should be left un-connected).



**Note:** It is recommended to connect to a power with 350W, 20A +5VDC capacity at least for heavily loaded system, and a 2A +5VSB capacity at least for supporting wake-up features.



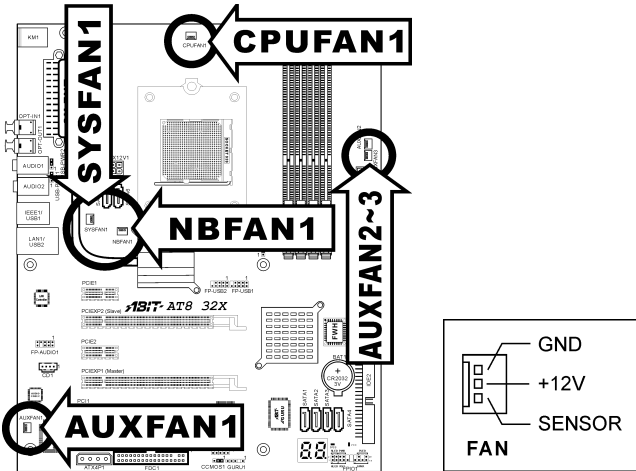
The auxiliary 12V power connector [ATX4P1] provides an additional power source for devices added on PCI Express slots. It is highly recommended to attach 12V power from the power supplier for the best system stability.

**(2). FAN Power Connectors**

These connectors each provide power to the cooling fans installed in your system.

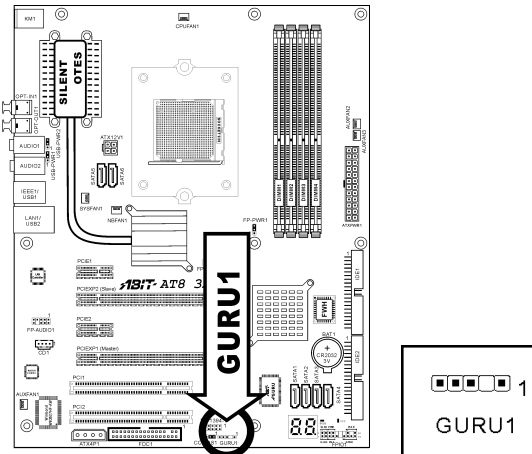
- **CPUFAN1:** CPU Fan Power Connector
- **SYSFAN1:** System Fan Power Connector
- **NBFAN1:** Chipset Fan Power Connector
- **AUXFAN1, AUXFAN2, AUXFAN3:** Auxiliary Fan Power Connector

**WARNING:** These fan connectors are not jumpers. DO NOT place jumper caps on these connectors.



**(3). GURU Clock Connection Header**

This header is reserved for connecting ABIT's exclusive GURU Clock.

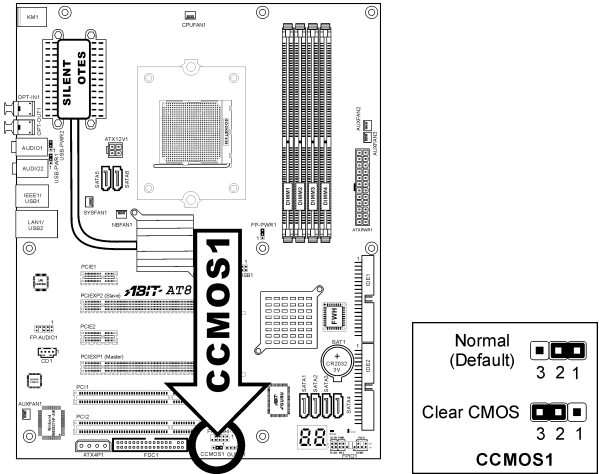


**(4). CMOS Memory Clearing Header**

This header uses a jumper cap to clear the CMOS memory.

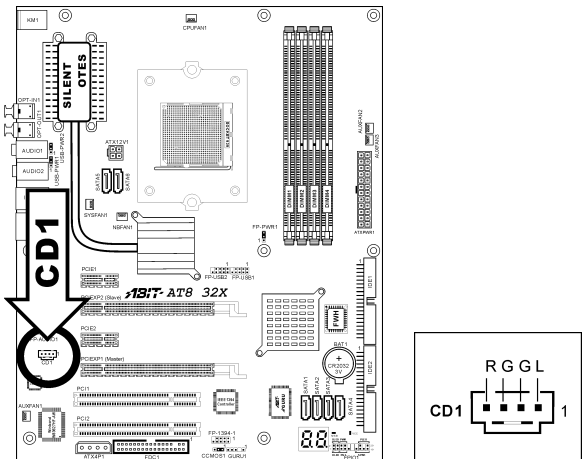
- **Pin 1-2 shorted (default):** Normal operation.
- **Pin 2-3 shorted:** Clear CMOS memory.

**WARNING:** Turn the power off first (including the +5V standby power) before clearing the CMOS memory. Failing to do so may cause your system to work abnormally or malfunction.



**(5). Internal Audio Connectors**

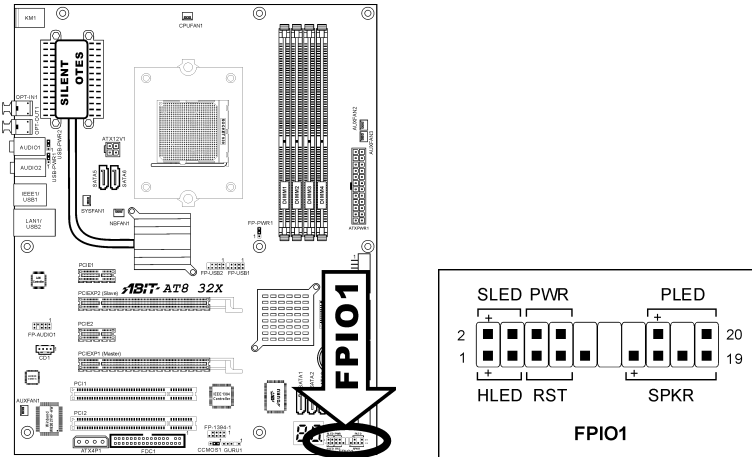
These connectors connect to the audio output of internal CD-ROM drive or add-on card.



## (6). Front Panel Switches & Indicators Headers

This header is used for connecting switches and LED indicators on the chassis front panel.

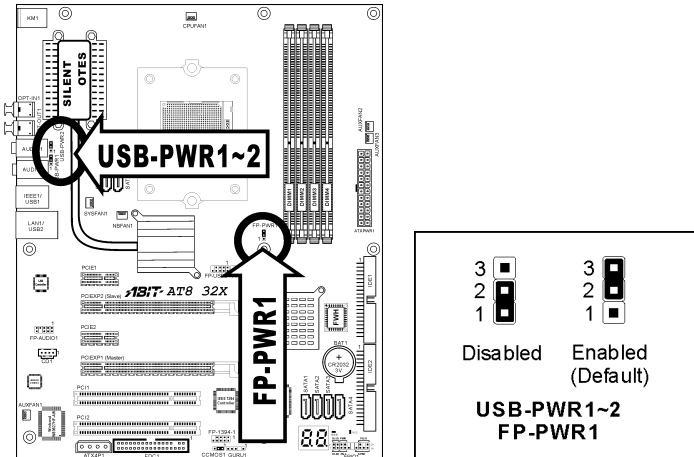
Watch the power LED pin position and orientation. The mark “+” aligning to the pin in the figure below stands for positive polarity for the LED connection. Please pay attention to connect these headers. A wrong orientation will simply cause the LED to not light, but a wrong connection of the switches could cause system malfunction.



- **HLED (Pin 1, 3):**  
Connects to the HDD LED cable of chassis front panel.
- **RST (Pin 5, 7):**  
Connects to the Reset Switch cable of chassis front panel.
- **SPK (Pin 15, 17, 19, 21):**  
Connects to the System Speaker cable of chassis.
- **SLED (Pin 2, 4):**  
Connects to the Suspend LED cable (if there is one) of chassis front panel.
- **PWR-ON (Pin 6, 8):**  
Connects to the Power Switch cable of chassis front panel.
- **PLED (Pin 16, 18, 20):**  
Connects to the Power LED cable of chassis front panel.

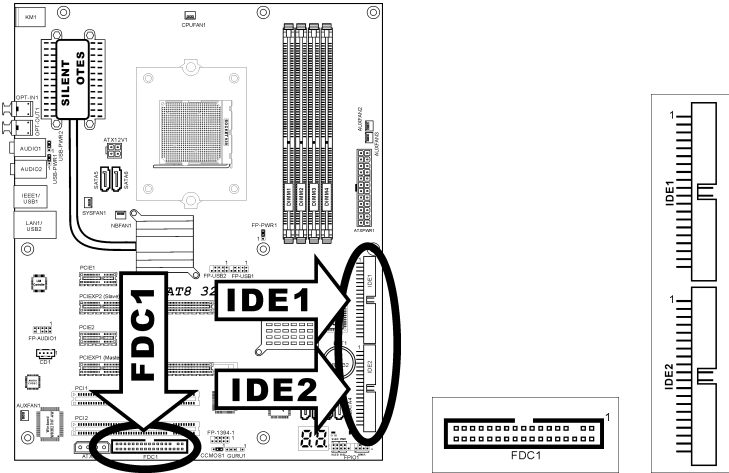
**(7). Wake-up Header**

These headers use a jumper cap to enable/disable the wake-up function.



- **USB-PWR1:**  
 Pin 1-2 shorted: Disable wake-up function support at USB1 port.  
 Pin 2-3 shorted (default): Enable wake-up function support at USB1 port.
- **USB-PWR2:**  
 Pin 1-2 shorted: Disable wake-up function support at USB2 port.  
 Pin 2-3 shorted (default): Enable wake-up function support at USB2 port.
- **FP-PWR1:**  
 Pin 1-2 shorted: Disable wake-up function support at FP-USB1, FP-USB2 port.  
 Pin 2-3 shorted (default): Enable wake-up function support at FP-USB1, FP-USB2 port.

**(8). Floppy and IDE Disk Drive Connectors**

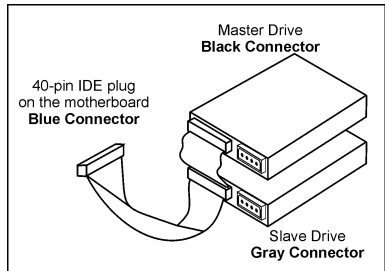


The FDC1 connector connects up to two floppy drives with a 34-wire, 2-connector floppy cable. Connect the single end at the longer length of ribbon cable to the FDC1 on the board, the two connectors on the other end to the floppy disk drives connector. Generally you need only one floppy disk drive in your system.

**NOTE:** The red line on the ribbon cable must be aligned with pin-1 on both the FDC1 port and the floppy connector.

Each of the IDE port connects up to two IDE drives at Ultra ATA/100 mode by one 40-pin, 80-conductor, and 3-connector Ultra ATA/66 ribbon cables.

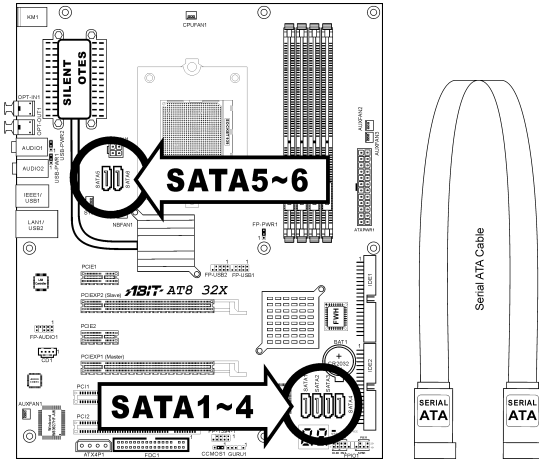
Connect the single end (blue connector) at the longer length of ribbon cable to the IDE port of this board, the other two ends (gray and black connector) at the shorter length of the ribbon cable to the connectors of your hard drives.



**NOTE:** Make sure to configure the “Master” and “Slave” relation before connecting two drives by one single ribbon cable. The red line on the ribbon cable must be aligned with pin-1 on both the IDE port and the hard-drive connector.

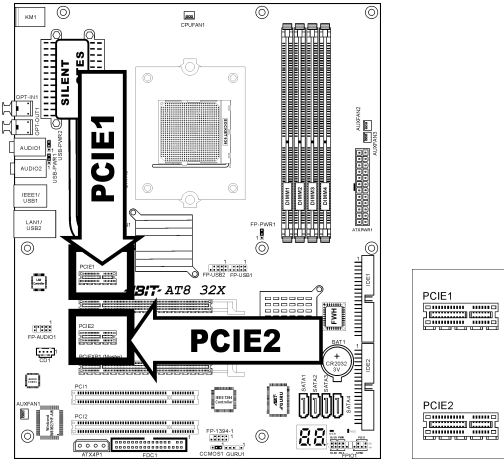
**(9). Serial ATA Connectors**

These connectors are provided to attach one Serial ATA device at each channel via Serial ATA cable.



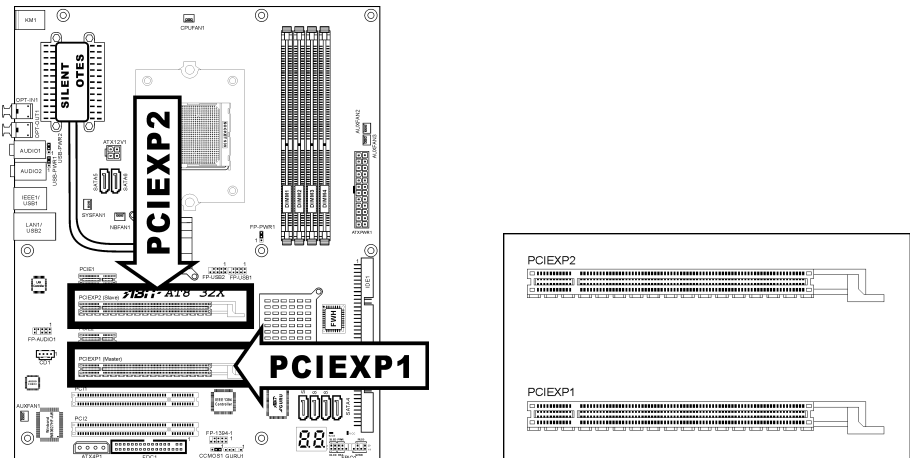
**(10). PCI Express x1 Slots**

These slots are used to attach the next generation of I/O architecture.



**(11). PCI Express x16 Slot**

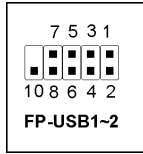
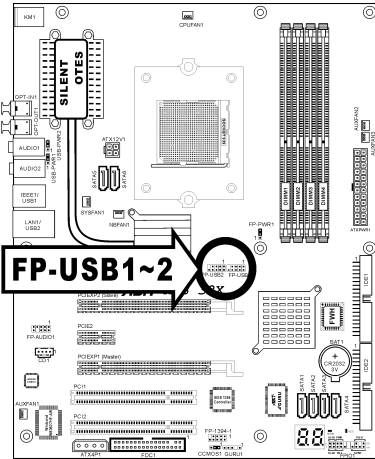
This slot is used to attach the next generation of graphics architecture.





**(12). Additional USB Port Headers**

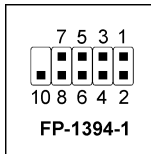
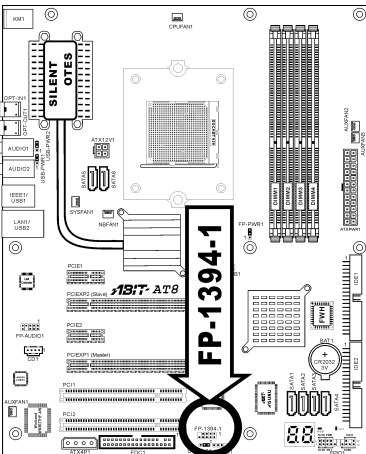
These headers each provide 2 additional USB 2.0 ports connection through a USB cable designed for USB 2.0 specifications.



Pin	Pin Assignment	Pin	Pin Assignment
1	VCC	2	VCC
3	Data0 -	4	Data1 -
5	Data0 +	6	Data1 +
7	Ground	8	Ground
9	NC	10	NC

**(13). Additional IEEE1394 Port Headers**

This header provides one additional IEEE1394 port connection through an extension cable and bracket.

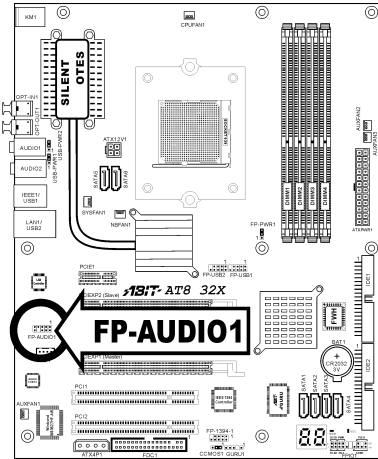


Pin	Pin Assignment	Pin	Pin Assignment
1	TPA0 +	2	TPA0 -
3	GND	4	GND
5	TPB0 +	6	TPB0 -
7	+12V	8	+12V
9	NC	10	GND

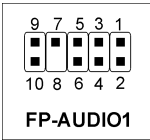
**(14). Front Panel Audio Connection Header**

This header provides the connection to audio connector at front panel.

- To use the audio connector at front panel, remove all the jumpers on this header, and then connect to front panel by the extension cable provided with the chassis.
- To use the audio connector at rear panel, disconnect the extension cable, attach the jumpers back at pin 5-6, and pin 9-10 (default setting).



Pin	Pin Assignment	Pin	Pin Assignment
1	MIC2 L	2	AGND
3	MIC2 R	4	AVCC
5	FRO-R	6	MIC2_JD
7	F_IO_SEN	8	NC
9	FRO-L	10	LINE2_JD

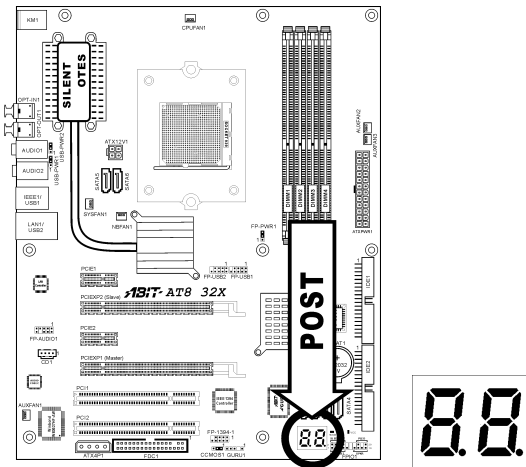


**(15). POST Code Display**

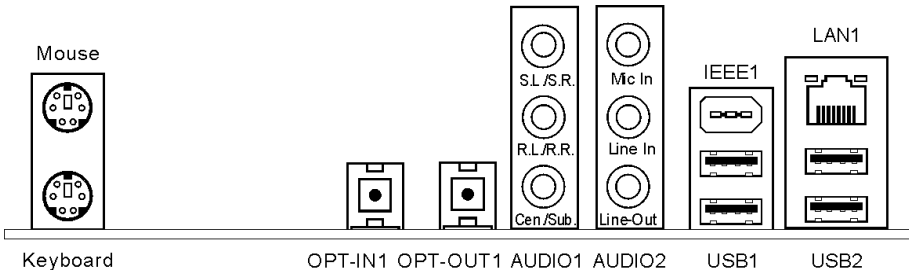
This is an LED device to display the “POST” Code, the acronym of **Power On Self Test**. The computer will execute the POST action whenever you power on the computer. The POST process is controlled by the BIOS. It is used to detect the status of the computer’s main components and peripherals. Each POST Code corresponds to different checkpoints that are also defined by the BIOS in advance. For example, “memory presence test” is an important checkpoint and its POST Code is “C1”. When the BIOS execute any POST item, it will write the corresponding POST Code into the address 80h. If the POST passes, the BIOS will process the next POST item and write the next POST Code into the address 80h. If the POST fails, we can check the POST Code in address 80h to find out where the problem lies.

This LED device also displays the “POST” Code of AC2005, an “uGuru” chipset developed exclusively by ABIT computer.

**NOTE:** The decimal point lights up when executing the AC2005 POST action.



See Appendix for both AWARD and AC2005 POST Code definition.

**(16). Back Panel Connectors**

- **Mouse:** Connects to PS/2 mouse.
- **Keyboard:** Connects to PS/2 keyboard.
- **OPT-IN1:** This connector provides an S/PDIF-In connection through optical fiber to digital multimedia devices.
- **OPT-OUT1:** This connector provides an S/PDIF-Out connection through optical fiber to digital multimedia devices.
- **AUDIO1:**
  - S.L./S.R. (Surround Left / Surround Right):** Connects to the surround left and surround right channel in the 7.1 channel audio system.
  - R.L./R.R. (Rear Left / Rear Right):** Connects to the rear left and rear right channel in the 7.1 channel audio system.
  - Cen./Sub. (Center / Subwoofer):** Connects to the center and subwoofer channel in the 7.1 channel audio system.
- **AUDIO2:**
  - Mic-In:** Connects to the plug from external microphone.
  - Line-In:** Connects to the line out from external audio sources.
  - Line-Out:** Connects to the front left and front right channel in the 7.1-channel or regular 2-channel audio system.
- **IEEE1:** Connects to devices of IEEE1394 protocol
- **LAN1:** Connects to Local Area Network.
- **USB1/USB2:** Connects to USB devices such as scanner, digital speakers, monitor, mouse, keyboard, hub, digital camera, joystick etc.

## Chapter 3. BIOS Setup

This motherboard provides a programmable EEPROM that you can update the BIOS utility. The BIOS (Basic Input/Output System) is a program that deals with the basic level of communication between processor and peripherals. Use the BIOS Setup program only when installing motherboard, reconfiguring system, or prompted to “Run Setup”. This chapter explains the Setup Utility of BIOS utility.

After powering up the system, the BIOS message appears on the screen, the memory count begins, and then the following message appears on the screen:

**PRESS DEL TO ENTER SETUP**

If this message disappears before you respond, restart the system by pressing <Ctrl> + <Alt> + <Del> keys, or by pressing the Reset button on computer chassis. Only when it failed by these two methods can you restart the system by powering it off and then back on.

After pressing <Del> key, the main menu screen appears.

Phoenix - AwardBIOS CMOS Setup Utility	
<ul style="list-style-type: none"> <li>▶ <b>µGuru Utility</b></li> <li>▶ <b>Standard CMOS Features</b></li> <li>▶ <b>Advanced BIOS Features</b></li> <li>▶ <b>Advanced Chipset Features</b></li> <li>▶ <b>Integrated Peripherals</b></li> <li>▶ <b>Power Management Setup</b></li> </ul>	<ul style="list-style-type: none"> <li>▶ <b>PnP/PCI Configurations</b></li> <li><b>Load Fail-Safe Defaults</b></li> <li><b>Load Optimized Defaults</b></li> <li><b>Set Password</b></li> <li><b>Save &amp; Exit Setup</b></li> <li><b>Exit Without Saving</b></li> </ul>
<p>Esc : Quit                      F10 : Save &amp; Exit Setup                      F6 : Save PROFILE to BIOS</p>	<p>↑ ↓ → ← : Select Item                      (RD580-M1575-6A7K9A1AC-00)                      F7 : Load PROFILE from BIOS</p>
OC Guru & ABIT EQ ...	

**NOTE:** In order to increase system stability and performance, our engineering staffs are constantly improving the BIOS menu. The BIOS setup screens and descriptions illustrated in this manual are for your reference only and may not completely match what you see on your screen.

In the BIOS Setup main menu, you can see several options. We will explain these options step by step in the following pages of this chapter, but let us first see a short description of the function keys you may use here.

**Esc:**

Press this button to quit the BIOS Setup.

↑ ↓ ← →:

Press these buttons to choose, in the main menu, the option you want to confirm or to modify.

**F10:**

When you have completed the setup of BIOS parameters, press this button to save these parameters and to exit the BIOS Setup menu.

**F6:**

Save current setting as a profile.

**F7:**

Load previous saved profile.

### 3-1. μGuru™ Utility

There are two setup menus in this μGuru utility. You may switch between these two by clicking the left or right arrow key on keyboard:

#### OC Guru:

μGuru Utility V1.00		
OC Guru	ABIT EQ	
AMD Athlon(tm) 64 Processor 3500+		Item Help
Frequency: 2200MHz		
CPU Operating Speed	2200 (200)	
X - Multiplier Factor	x11.0	
X - External Clock	AUTO	
- Estimated New CPU Clock	2200MHz	
X - PCIE Clock	100	
Voltages Control		Auto Detect
X - CPU Voltage	1.4000V	
X - NB 1.8V Voltage	1.80 V	
X - DDR Voltage	2.60 V	
X - HyperTransport Voltage	1.20 V	
X - NB 1.2V Voltage	1.20 V	
X - DDR Reference Voltage	Default	
▶ Power Cycle Statistics	Press Enter	
↑ ↓ → ←:Move Enter:Select +/-/PU/PD:Value		F10:Save ESC:Exit

**AMD Athlon(tm) 64 Processor 3500+**

This item displays the CPU model name installed on this motherboard.

**Frequency:**

This item displays the processor speed of the CPU installed on this motherboard.

---

**CPU Operating Speed:**

This item displays the CPU operating speed according to the type and speed of your CPU. You can also select the [User Define] option to enter the manual option.

**User Define:**

**WARNING:** The wrong settings of the multiplier and external clock in certain circumstances may cause CPU damage. Setting the working frequency higher than the PCI chipset or processor specs, may cause abnormal memory module functioning, system hangs, hard disk drive data loss, abnormal functioning of the VGA card, or abnormal functioning with other add-on cards. Using non-specification settings for your CPU is not the intention of this explanation. These should be used for engineering testing, not for normal applications.

There will be no guaranty for the settings beyond specification, any damage of any component on this motherboard or peripherals result therein is not our responsibility.

\* **Multiplier Factor:**

This item displays the multiplier factor for the CPU you installed.

\* **External Clock:**

This item selects the external clock frequency. Due to the specification limit of the CPU you installed, the speed you set over its standard bus speed is supported, but not guaranteed.

\* **Estimated New CPU Clock**

This item estimates the new CPU clock when the next time the system starts. The value is decided by the values of "Multiplier Factor" and "External Clock".

\* **PCI Express Clock**

This item selects the PCI Express frequency.

---

**Voltages Control:**

This option allows you to switch between the default and user-defined voltages. Leave this setting to default unless the current voltage setting cannot be detected or is not correct. The option "User Define" enables you to select the following voltages manually.

\* **CPU Voltage:**

This item selects the CPU core voltage.

\* **NB 1.8V Voltage:**

This item selects the NB 1.8V voltage.

\* **DDR Voltage:**

This item selects the voltage for DRAM slot.

\* **HyperTransport Voltage:**

This item selects the voltage for LDT Bus.

\* **NB 1.2V Voltage:**

This item selects the NB 1.2V voltage.

\* **DDR Reference Voltage:**

This Item selects the voltage for DDR memory reference.

**Power Cycle Statistics:**

Click <Enter> key to enter its submenu:

µGuru Utility V1.00	
OC Guru	ABIT EQ
<b>Power Cycle Statistics</b>	<b>Item Help</b>
PC Up Time                    0 Hours PC Up Time Total            107 Hours PC Power Cycles             532 Cycles PC Reset Button Cycles    281 Cycles AC Power On Total Time    288 Hours AC Power Cycles            228 Cycles	
↑ ↓ → ←:Move Enter:Select +/-/PU/PD:Value                    F10:Save ESC:Exit	

These items display the power cycle statistics for each element.

**ABIT EQ:**

Click right-arrow <=> key to switch from OC Guru setup menu to ABIT EQ setup menu:

µGuru Utility V1.00	
OC Guru	ABIT EQ
ABIT EQ Beep Control            Enabled ▶ Temperature Monitoring      Press Enter ▶ Voltage Monitoring            Press Enter ▶ Fan Speed Monitoring         Press Enter ▶ FanEQ Control                 Press Enter	<b>Item Help</b>
↑ ↓ → ←:Move Enter:Select +/-/PU/PD:Value                    F10:Save ESC:Exit	

**ABIT EQ Beep Control:**

This item allows you to enable or disable ABIT EQ Beep Control function.



↵ **Temperature Monitoring:**

Click <Enter> key to enter its submenu:

uGuru Utility V1.00					
OC Guru	ABIT EQ				
Temperature Monitoring					
	Reading	Shutdown Enable	Shutdown Temp.	Beep Enable	Beep Temp.
(*) CPU Temperature	41°C/105°F	(*)	85°/185°F	(*)	75°C/167°F
(*) NB Temperature	48°C/114°F	( )	85°C/185°F	(*)	75°C/167°F
(*) SYS Temperature	31°C/87°F	( )	65°C/149°F	(*)	55°C/131°F
(*) PWM Temperature	31°C/87°F	( )	90°C/194°F	(*)	80°C/176°F

↑ ↓ → ←:Move Space:Select +/-/PU/PD:Value F10:Save ESC:Exit

**CPU Temperature/NB Temperature/SYS Temperature/PWM Temperature:**

These items display the temperatures of CPU, System, and Power Module.

\* **Shutdown Enable:**

Use <Space> key to enable system shutdown function. If the CPU/NB/SYS/PWM's temperature exceeds the shutdown temperature limit, the system would shutdown automatically.

\* **Shutdown Temp.:**

This item sets the temperature that would shutdown the system automatically in order to prevent system overheats.

\* **Beep Enable:**

Use <Space> key to enable warning beeps function. Once the system has detected that the CPU/System/PWM's temperature exceeded the beep temperature limit, warning beeps will sound.

\* **Beep Temp.:**

This item selects the warning temperature limit.

**NOTE:** The shutdown temperature must be set above the warning temperature.

## ↳ Voltage Monitoring:

Click <Enter> key to enter its submenu:

µGuru Utility V1.00						
OC Guru		ABIT EQ		Voltage Monitoring		
	Reading	Shutdown Beep		High	Low	
		Enable	Enable	Limit	Limit	
(*)CPU Core Voltage	1.32 V	(*)	(*)	1.6 V	0 V	
(*)DDR Voltage	2.67 V	( )	(*)	3.10 V	2.10 V	
(*)DDR VTT Voltage	1.32 V	( )	(*)	1.55 V	1.05 V	
(*)HyperTransport Voltage	1.20 V	( )	(*)	1.45 V	0.95 V	
(*)CPU VDDA 2.5V Voltage	2.65 V	( )	(*)	1.80 V	1.20 V	
(*)NB 1.8V Voltage	1.84 V	( )	(*)	2.15 V	1.45 V	
(*)NB 1.8V Dual Voltage	1.87 V	( )	(*)	3.00 V	2.00 V	
(*)NB 1.2V Voltage	1.19 V	( )	(*)	0.00 V	0.00 V	
(*)PCIE 1.2V Voltage	1.20 V	( )	(*)	0.00 V	0.00 V	
(*)ATX +12V (24-Pin Connector)	12.07 V	( )	(*)	14.40V	9.60 V	
(*)ATX +12V (4-Pin Connector)	12.13 V	( )	(*)	14.40V	9.60 V	
(*)ATX +5V	5.14 V	( )	(*)	6.00 V	4.00 V	
(*)ATX +3.3V	3.41 V	( )	(*)	3.95 V	2.65 V	
(*)ATX 5VSB	5.14 V	( )	(*)	6.00 V	4.00 V	

↑ ↓ → ←:Move Space:Select +/-/PU/PD:Value F10:Save ESC:Exit

### All Voltages:

These items display the voltage of each element.

#### \* Shutdown Enable:

Use <Space> key to enable system shutdown function. If the voltage of corresponding element is higher/lower than the high/low limit, the system would automatically shutdown.

#### \* Beep Enable:

Use <Space> key to enable warning beeps function. If the voltage of corresponding element is higher/lower than the high/low limit, warning beeps will sound.

#### \* High/Low Limit:

These items set the high and low voltage limit.

**NOTE:** The value of high limit must be set above the one of low limit.

↵ **Fan Speed Monitoring:**

Click <Enter> key to enter its submenu:

µGuru Utility V1.00				
OC Guru	ABIT EQ			
Fan Speed Monitoring				
	Reading	Shutdown Enable	Beep Enable	Low Limit
(*) CPU FAN Speed	4800 RPM	(*)	(*)	300 RPM
( ) NB FAN Speed	N/A	( )	( )	300 RPM
( ) SYS FAN Speed	N/A	( )	( )	300 RPM
( ) AUX1 FAN Speed	N/A	( )	( )	300 RPM
( ) AUX2 FAN Speed	N/A	( )	( )	300 RPM
( ) AUX3 FAN Speed	N/A	( )	( )	300 RPM

↑ ↓ → ← : Move Space : Select +/- / PU / PD : Value F10 : Save ESC : Exit

**CPU/NB/SYS/AUX1/AUX2/AUX3 FAN Speed:**

These items display the speed of the fans connected to CPU, NB, SYS, AUX1, AUX2 and AUX3 FAN headers.

\* **Shutdown Enable:**

Use <Space> key to enable system shutdown function. Once the system has detected that the fan speed is lower than the low limit value, system will shutdown automatically.

\* **Beep Enable:**

Use <Space> key to enable warning beeps function. If the fan speed is lower than the low limit value, warning beeps will sound.

\* **Low Limit:**

This item sets the low limit of fan speed.

**NOTE:** Only the fans with 3-pin plugs provide the speed monitoring function.

↵ **FanEQ Control:**

µGuru Utility V1.00			
OC Guru	ABIT EQ		
	FanEQ Control		
▶ CPU	FanEQ Control	Press Enter	Item Help
▶ NB	FanEQ Control	Press Enter	
▶ SYS	FanEQ Control	Press Enter	
▶ AUX1	FanEQ Control	Press Enter	
▶ AUX2	FanEQ Control	Press Enter	
▶ AUX3	FanEQ Control	Press Enter	
↑ ↓ → ←:Move Enter:Select +/-/PU/PD:Value			F10:Save ESC:Exit

**CPU/NB/SYS/AUX1/AUX2/AUX3 FanEQ Control:**

Click <Enter> key to enter its submenu:

µGuru Utility V1.00			
OC Guru	ABIT EQ		
	CPU FanEQ Control		
CPU	FanEQ Control	Enabled	Item Help
-Reference	Temperature	CPU Temperature	
-Control	Temperature High	65°C/149°F	
-Control	Temperature Low	35°C/95°F	
-DC Fan	Voltage High	12.0 V	
-DC Fan	Voltage Low	8.0 V	
↑ ↓ → ←:Move Enter:Select +/-/PU/PD:Value			F10:Save ESC:Exit

When set to [Enabled], these items control the CPU, NB, SYS, AUX1, AUX2 and/or AUX3 fan speed by the following setting combinations.

\* **Reference Temperature:**

This item selects the reference point for taking temperature among the available options of CPU, SYS, NB and PWM Temperature, but there is only one “CPU Temperature” item to choose for the “CPU FanEQ Control”.

\* **Control Temperature High/Low:**

This item sets the high and low temperature limits desired for the fan speed control.

\* **DC Fan Voltage High/Low:**

This item sets the high and low voltage limits for the fan.

**NOTE:** The value of high limit must be set above the one of low limit.

### 3-2. Standard CMOS Features

This section contains the basic configuration parameters of the BIOS.

Phoenix - AwardBIOS CMOS Setup Utility		
Standard CMOS Features		
Date (mm:dd:yy)	Tue. Feb. 14 2006	Item Help
Time (hh:mm:ss)	17 : 10 : 27	
▶ IDE Channel 1 Master	None	
▶ IDE Channel 1 Slave	None	
▶ IDE Channel 2 Master	None	
▶ IDE Channel 2 Slave	None	
▶ IDE Channel 3 Master	None	
▶ IDE Channel 3 Slave	None	
▶ IDE Channel 4 Master	None	
▶ IDE Channel 4 Slave	None	
Drive A	1.44M, 3.5 in.	
Floppy 3 Mode Support	Disabled	
Halt On	All, But Keyboard	
Base Memory	640K	
Extended Memory	1046520K	
Total Memory	1047552K	
↑ ↓ → ← : Move Enter : Select +/- /PU/PD : Value F10 : Save ESC : Exit F1 : General Help F5 : Previous Values F6 : Fail-Safe Defaults F7 : Optimized Defaults		

**Date (mm:dd:yy):**

This item sets the date you specify (usually the current date) in the format of [Month], [Date], and [Year].

**Time (hh:mm:ss):**

This item sets the time you specify (usually the current time) in the format of [Hour], [Minute], and [Second].

## ☞ IDE Channel 1 Master/Slave, IDE Channel 2 Master/Slave, IDE Channel 3 Master/Slave, IDE Channel 4 Master/Slave:

Click <Enter> key to enter its submenu:

Phoenix - AwardBIOS CMOS Setup Utility		
IDE Channel 1 Master		
IDE HDD Auto-Detection	Press Enter	Item Help
IDE Channel 1 Master	Auto	
Access Mode	Auto	
Capacity	0 MB	
Cylinder	0	
Head	0	
Precomp	0	
Landing Zone	0	
Sector	0	
↑ ↓ → ← : Move Enter : Select +/- /PU/PD : Value F10 : Save ESC : Exit F1 : General Help F5 : Previous Values F6 : Fail-Safe Defaults F7 : Optimized Defaults		

### IDE HDD Auto-Detection:

This item allows you to detect the parameters of IDE drives by pressing <Enter> key. The parameters will be shown on the screen automatically.

### IDE Channel 1 Master/Slave, IDE Channel 2 Master/Slave, IDE Channel 3 Master/Slave, IDE Channel 4 Master/Slave:

When set to [Auto], the BIOS will automatically check what kind of IDE drive you are using. If you want to define your own drive by yourself, set it to [Manual] and make sure you fully understand the meaning of the parameters. Please refer to the instruction manual provided by the device's manufacturer to get the setting right.

### Access Mode:

This item selects the mode to access your IDE devices. Leave this item to its default [Auto] setting to detect the access mode of your HDD automatically.

### Capacity:

This item displays the approximate capacity of the disk drive. Usually the size is slightly greater than the size of a formatted disk given by a disk-checking program.

### Cylinder:

This item configures the number of cylinders.

---

**Head:**

This item configures the number of read/write heads.

---

**Precomp:**

This item displays the number of cylinders at which to change the write timing.

---

**Landing Zone:**

This item displays the number of cylinders specified as the landing zone for the read/write heads.

---

**Sector:**

This item configures the number of sectors per track.

---

 **Back to Standard CMOS Features Setup Menu:**

---

**Drive A:**

This item sets the type of floppy drives (usually only Drive A) installed.

---

**Floppy 3 Mode Support:**

This item allows you to use “3 Mode Floppy Drive” in Japanese computer system by selecting drive A, B, or both. Leave this item to its default [Disabled] setting if you are not using this Japanese standard floppy drive.

---

**Halt On:**

This item determines whether the system stops if an error is detected during system boot-up.

**[All Errors]:** The system-boot will stop whenever the BIOS detect a non-fatal error.

**[No Errors]:** The system-boot will not stop for any error detected.

**[All, But Keyboard]:** The system-boot will stop for all errors except a keyboard error.

**[All, But Diskette]:** The system-boot will stop for all errors except a diskette error.

**[All, But Disk/Key]:** The system-boot will stop for all errors except a diskette or keyboard error.

---

**Base Memory:**

This item displays the amount of base memory installed in the system. The value of the base memory is typically 640K for system with 640K or more memory size installed on the motherboard.

---

**Extended Memory:**

This item displays the amount of extended memory detected during system boot-up.

---

**Total Memory:**

This item displays the total memory available in the system.

### 3-3. Advanced BIOS Features

Phoenix - AwardBIOS CMOS Setup Utility Advanced BIOS Features		
		Item Help
Quick Power on Self Test	Enabled	
▶ Hard Disk Boot Priority	Press Enter	
▶ CD-ROM Boot Priority	Press Enter	
First Boot Device	Floppy	
Second Boot Device	Hard Disk	
Third Boot Device	IDE CDROM	
Boot Other Device	Enabled	
Boot Up Floppy Seek	Disabled	
Boot Up NumLock Status	On	
Security Option	Setup	
MPS Version Ctrl For OS	1.4	
Delay IDE Initial(Secs)	0	
Full Screen Logo Show	Enabled	
↑ ↓ → ← : Move Enter : Select +/- /PU/PD : Value F10 : Save ESC : Exit F1 : General Help F5 : Previous Values F6 : Fail-Safe Defaults F7 : Optimized Defaults		

#### Quick Power On Self Test:

When set to [Enabled], this item speeds up the Power On Self Test (POST) after powering on the system. The BIOS shortens or skips some checks during the POST.

#### Hard Disk Boot Priority:

This item selects the hard disks booting priority. By pressing <Enter> key, you can enter its submenu where the hard disks detected can be selected for the booting sequence to boot up the system.

This item functions only when there is the option of [Hard Disk] in any one of the First/Second/Third Boot Device items.

#### CD-ROM Boot Priority:

This item allows you to select the booting priority of CD-ROM devices.

**NOTE:** This item appears only if you install CD-ROM devices to your computer.

#### First Boot Device / Second Boot Device / Third Boot Device / Boot Other Device:

Select the drive to boot first, second and third in the [First Boot Device], [Second Boot Device], and [Third Boot Device] items respectively. The BIOS will boot the operating system according to the sequence of the drive selected. Set [Boot Other Device] to [Enabled] if you wish to boot from another device other than these three items.

#### Boot Up Floppy Seek:

When the computer boots up, the BIOS detects if the system has a FDD or not. When this item is set to *Enabled*, if the BIOS detects no floppy drive, it will display a floppy disk drive error message. If this item is disabled, the BIOS will skip this test. The default setting is *Disabled*.



**Boot Up NumLock Status:**

This item determines the default state of the numeric keypad at system booting up.

**[On]:** The numeric keypad functions as number keys.

**[Off]:** The numeric keypad functions as arrow keys.

---

**Security Option:**

This item determines when the system will prompt for password - every time the system boots or only when it enters the BIOS setup.

**[Setup]:** The password is required only when accessing the BIOS Setup.

**[System]:** The password is required each time the computer boots up.

To disable security, select *Set Password* at main menu and then you will be asked to enter the password. Do not type anything and just press the <Enter> key and it will disable security. Once security is disabled, the system will boot and you can enter the *BIOS setup menu* freely.

**NOTE:** Don't forget your password. If you forget the password, you will have to open the computer case and clear all information in the CMOS before you can start up the system. But by doing this, you will have to reset all previously set options.

---

**MPS Version Ctrl For OS:**

This item specifies which version of MPS (Multi-Processor Specification) this motherboard will use. Leave this item to its default setting.

---

**Delay IDE Initial(Secs):**

This item allows the BIOS to support some old or special IDE devices by prolonging this delay time. A larger value will give more delay time to the device for which to initialize and to prepare for activation.

---

**Full Screen LOGO Show:**

This item determines to show the full screen logo when booting.

---

---

### 3-4. Advanced Chipset Features

Phoenix - AwardBIOS CMOS Setup Utility Advanced Chipset Features		
▶ DRAM Configuration	Press Enter	Item Help
▶ LDT & PCI Bus Control	Press Enter	
System BIOS Cacheable	Enabled	
↑ ↓ ← → : Move Enter: Select +/- /PU/PD: Value F10: Save ESC: Exit F1: General Help F5: Previous Values F6: Fail-Safe Defaults F7: Optimized Defaults		

#### ↳ DRAM Configuration:

Click <Enter> key to enter its submenu:

Phoenix - AwardBIOS CMOS Setup Utility DRAM Configuration		
DRAM Timing Selectable	Auto	Item Help
X - DRAM Clock	Auto	
X - CAS Latency Time	Auto	
X - Row Cycle Time	Auto	
X - Row Refresh Cycle Time	Auto	
X - Min RAS# Active Time	Auto	
X - RAS# to CAS# Delay	Auto	
X - RAS# Precharge Time	Auto	
X - RAS# to RAS# Delay	Auto	
X - Write Recovery Time	Auto	
X - Write to Read Delay	Auto	
X - Read to Write Delay	Auto	
X - DRAM Command Rate	Auto	
X - Bank Interleaving	Enabled	
X - Burst Length	4 beats	
32 bit Dram Memory Hole	Auto	
MTRR Mapping Mode	Continuous	
DRAM ECC Feature Control	Non-ECC	
X - ECC Memory Interlock	At Least One	
X - ECC MCE Enable	Disabled	
X - Chip-Kill Mode Enable	Disabled	
X - ECC Redirection	Disabled	
X - DRAM Scrub Rate	Disabled	
X - L2 Cache Scrub Rate	Disabled	
X - DCache Scrub Rate	Disabled	
↑ ↓ ← → : Move Enter: Select +/- /PU/PD: Value F10: Save ESC: Exit F1: General Help F5: Previous Values F6: Fail-Safe Defaults F7: Optimized Defaults		

#### DRAM Timing Selectable:

This item selects the DRAM timing mode. When set to “By SPD”, the BIOS will read the DRAM module

SPD data and automatically set to the values stored in it. Leave this item to its default “**Auto**” setting.

※ **DRAM Clock:**

This item sets the DRAM clock of your DRAM module. The system may be unstable or unable to boot up if your DRAM module does not support the clock you set.

When set to [By SPD], the BIOS will read the DRAM module SPD data and automatically set the DRAM clock by the value stored in it.

※ **CAS Latency Time:**

You can select SDRAM CAS (Column Address Strobe) latency time according your SDRAM specification.

※ **Row Cycle Time:**

This item specifies the RAS# active to RAS# active time or auto refresh time of the same bank.

※ **Row Refresh Cycle Time:**

This item specifies the auto refresh active to RAS# active time or RAS# auto refresh time.

※ **Min. RAS# Active Time:**

This item specifies the minimum RAS# active time.

※ **RAS# to CAS# Delay:**

This item specifies the RAS# active to CAS# read write delay time to the same bank.

※ **RAS# Precharge Time:**

This item specifies the RAS# precharge time.

※ **RAS# to RAS# Delay:**

This item specifies the RAS# active to RAS# active delay time of different bank.

※ **Write Recovery Time:**

This item specifies the time measured from the last write datum is safely registered by the DRAM.

※ **Write to Read Delay:**

This item specifies the time measured from the rising edge following the last non-masked data strobe to the rising edge of the next read command.

※ **Read to Write Delay:**

This item specifies the read to write delay.

※ **DRAM Command Rate:**

When the host (northbridge) locates the desired memory address, it then processes the wait state of commands.

※ **Bank Interleaving:**

Depending on your SDRAM module structure, the 4-Way setting can offer the best performance. If you choose the wrong setting, the computer system will not run in a stable manner. For detailed information on your SDRAM module, please ask your SDRAM module manufacturer.

**\* Burst Length**

DDR SDRAM modules provide a Burst mode that means an auto precharge function for programmable READ or WRITE burst lengths of 2, 4 or 8 locations.

This means that if we set burst length to 8, the address bus will access 8 bytes each cycle to precharge, etc.

---

**32 bit Dram Memory Hole:**

This item selects the method to remap the 32 bit Dram memory hole. Leave this item to its default “Auto” Setting.

---

**MTRR mapping mode**

The item selects the MTRR mapping mode. The MTRR (Memory-Type and Range Registers) controls the access and cacheability of memory regions in the processor.

---

**DRAM ECC Feature Control**

When installed with the DRAM that support ECC feature, you may select [ECC] option, and then control the following sub-items.

- \* **ECC Memory Interlock**
- \* **ECC MCE Enable**
- \* **Chip-Kill Mode Enable**
- \* **ECC Redirection**
- \* **DRAM Scrub Rate**
- \* **L2 Cache Scrub Rate**
- \* **DCache Scrub Rate**

↶ **Back to Advanced Chipset Features Setup Menu:**

↶ **LDT & PCI Bus Control:**

Click <Enter> key to enter its submenu:

Phoenix - AwardBIOS CMOS Setup Utility		
LDT & PCI Bus Control		
LDT Configuration	Enabled	Item Help
Upstream LDT Bus Width	16 bit	
Downstream LDT Bus Width	16 bit	
LDT Bus Frequency	Auto	
PCIE Reset Delay	Disabled	
↑ ↓ → ← : Move   Enter : Select   +/- / PU / PD : Value   F10 : Save   ESC : Exit   F1 : General Help F5 : Previous Values   F6 : Fail-Safe Defaults   F7 : Optimized Defaults		

**LDT Configuration:**

This item enables or disables the LDT Configuration function.

**Upstream LDT Bus Width:**

This item sets the value for the Upstream LDT Bus Width.

**Downstream LDT Bus Width:**

This item sets the value for the Downstream LDT Bus Width.

**LDT Bus Frequency:**

This item allows you to select LDT Bus Frequency.

**PCIE Reset Delay:**

This item enables or disables the PCIE Reset Delay function.

↶ **Back to Advanced Chipset Features Setup Menu:**

**System BIOS Cacheable:**

Two options are available: Disabled or Enabled. When you select *Enabled*, you get faster system BIOS executing speed via the L2 cache.

## 3-5. Integrated Peripherals

Phoenix - AwardBIOS CMOS Setup Utility		
Integrated Peripherals		
▶ OnChip IDE Device	Press Enter	Item Help
▶ OnChip PCI Device	Press Enter	
▶ Onboard PCI Device	Press Enter	
Onboard FDC Controller	Enabled	
↑ ↓ → ← : Move Enter : Select +/- /PU/PD : Value F10 : Save ESC : Exit F1 : General Help F5 : Previous Values F6 : Fail-Safe Defaults F7 : Optimized Defaults		

### OnChip IDE Device

Click <Enter> key to enter its submenu:

Phoenix - AwardBIOS CMOS Setup Utility		
OnChip IDE Device		
OnChip IDE-1 Controller	Enabled	Item Help
OnChip IDE-2 Controller	Enabled	
OnChip SATA Controller	Enabled	
- SATA Mode Selected	IDE Mode	
- SATA ROM	Enabled	
↑ ↓ → ← : Move Enter : Select +/- /PU/PD : Value F10 : Save ESC : Exit F1 : General Help F5 : Previous Values F6 : Fail-Safe Defaults F7 : Optimized Defaults		

#### OnChip IDE-1 Controller/ OnChip IDE-2 Controller:

This item allows you to enable or disable the primary (IDE1) and secondary (IDE2) IDE controller. Select [Disabled] if you want to add a different hard drive controller.

#### OnChip SATA Controller:

This option enables or disables the on-chip SATA controller.

**SATA Mode Selected:**

This item selects the SATA mode. Refer to the following table for the relationship among different configurations over the SATA connectors.

**[IDE Mode]:** This is the default setting for running SATA devices in IDE mode.

**[RAID Mode]:** Select this mode if you are running SATA devices in RAID mode.

**[AHCI Mode]:** Select this mode if you are running Microsoft’s 64-bit operating system.

SATA Connector	IDE Mode / AHCI Mode	RAID Mode
SATA1	Channel 3 Master	Channel 0 Master
SATA2	Channel 4 Master	Channel 1 Master
SATA3	Channel 3 Slave	Channel 2 Master
SATA4	Channel 4 Slave	Channel 3 Master

**SATA ROM**

This item allows you to use the boot ROM of on-chip Serial ATA to boot up system.

 **OnChip PCI Device:**

Phoenix – AwardBIOS CMOS Setup Utility		
OnChip PCI Device		
		Item Help
OnChip Audio Controller	Enabled	
OnChip USB Controller	Enabled	
- USB 2.0 Controller	Enabled	
- USB Keyboard Support via	OS	
- USB Mouse Support via	OS	
↑ ↓ → ← : Move Enter : Select +/- /PU/PD : Value F10 : Save ESC : Exit F1 : General Help F5 : Previous Values F6 : Fail-Safe Defaults F7 : Optimized Defaults		

**OnChip Audio Controller:**

This option enables or disables the audio controller.

**OnChip USB Controller:**

This item enables or disables the USB Controller. If you choose to disable this item, the “**USB 2.0 Controller**”, “**USB Keyboard Support via**” and “**USB Mouse Support via**” items will not be able to select in *Integrated Peripherals* menu.

\* **USB 2.0 Controller:**

This item enables or disables the USB 2.0 Controller.

✱ **USB Keyboard Support via:**

This item allows you to select [BIOS] for using USB keyboard in DOS environment, or [OS] in OS environment.

✱ **USB Mouse Support via:**

This item allows you to select [BIOS] for using USB mouse in DOS environment, or [OS] in OS environment.

↪ **Onboard PCI Device:**

Phoenix - AwardBIOS CMOS Setup Utility		
Onboard PCI Device		
		Item Help
Onboard LAN Controller	Enabled	
- LAN Boot ROM	Disabled	
Onboard SATA Controller	Enabled	
- SATA Option ROM	Enabled	
- RAID Mode	Disabled	
Onboard 1394 Controller	Enabled	
↑ ↓ → ← : Move Enter : Select +/- /PU/PD : Value F10 : Save ESC : Exit F1 : General Help F5 : Previous Values F6 : Fail-Safe Defaults F7 : Optimized Defaults		

**Onboard LAN Controller:**

This option enables or disables the LAN controller.

✱ **LAN Boot ROM:**

This item allows you to use the boot ROM (instead of a disk drive) to boot-up the system and access the local area network directly.

**Onboard SATA Controller:**

This item enables or disables the onboard SATA controller.

✱ **SATA Option ROM:**

This item allows you to use the boot ROM of onboard Serial ATA RAID to boot up system.

✱ **RAID Mode**

This item determines to enable or disable the RAID mode for the onboard SATA controller.

**Onboard 1394 Controller:**

This option enables or disables the IEEE 1394 controller.

↪ **Back to Integrated Peripherals Setup Menu:**

**Onboard FDC Controller:**

Two options are available: Enabled and Disabled. The default setting is *Enabled*. You can enable or disable the onboard FDC controller.



## 3-6. Power Management Setup

Phoenix - AwardBIOS CMOS Setup Utility Power Management Setup		
ACPI Suspend Type	S3(Suspend-to-RAM)	Item Help
- Resume by USB from S3	Enabled	
Power Button Function	Instant-Off	
Wake Up by PME# of PCIE	Disabled	
Wake Up by PME# of PCI	Disabled	
Wake Up by Onboard LAN	Disabled	
Wake Up by Alarm	Disabled	
X - Date(of Month) Alarm	0	
X - Time (hh:mm:ss) Alarm	0 : 0 : 0	
AMD K8 Cool'n'Quiet Control	Auto	
POWER ON Function	BUTTON ONLY	
X - KB Power ON Password	Enter	
X - Hot Key Power ON	Ctrl-F1	
Restore on AC Power Loss	Power Off	
↑ ↓ → ← : Move Enter : Select +/- /PU/PD : Value F10 : Save ESC : Exit F1 : General Help F5 : Previous Values F6 : Fail-Safe Defaults F7 : Optimized Defaults		

### ACPI Suspend Type:

This item selects the type of Suspend mode.

**[S1(PowerOn-Suspend)]**: Enables the Power On Suspend function.

**[S3(Suspend-To-RAM)]**: Enables the Suspend to RAM function.

#### \* Resume by USB from S3:

Two options are available: Disabled or Enabled. The default setting is *Disabled*. When set to *Enabled*, any event related to on-chip USB will power on the system. This item can be configured only if the item "ACPI Suspend Type" is set to [S3(STR)].

### Power Button Function:

Two options are available: Delay 4 Sec or Instant-Off. The default setting is *Instant-Off*. It is activated when the user presses the power button for more than four seconds while the system is in the working state, then the system will transition to the soft-off (Power off by software). This is called the power button over-ride.

### Wake Up by PME# of PCIE:

Two options are available: Disabled or Enabled. When set to *Enabled*, any event related to PCIE cards (PME) will power on the system.

### Wake Up by PME# of PCI:

Two options are available: Disabled or Enabled. When set to *Enabled*, any event related to PCI cards (PME) will power on the system.

### Wake Up by Onboard LAN:

When set to [Enabled], you can remotely wake up a PC in Soft-Off condition via a LAN card that support the wake up function.

---

**Wake Up by Alarm:**

Two options are available: Disabled or Enabled. The default setting is *Disabled*. When set to *Enabled*, you can set the date and time at which the RTC (real-time clock) alarm awakens the system from Suspend mode.

**\* Date (of Month) Alarm/ Time (hh:mm:ss) Alarm:**

You can set the Date (month) Alarm and Time Alarm (hh:mm:ss). Any event occurring will awaken a system that has powered down.

---

**AMD K8 Cool 'n' Quiet Control:**

This option enables or disables the AMD K8 cool and quiet function.

---

**Power On Function:**

This item selects the way you want your system to power on.

**[Password]:** Use a password to power on the system, select this option then press <Enter>. Enter your password. You can enter up to 5 characters. Type in exactly the same password to confirm, and then press <Enter>.

**[Hot KEY]:** Use any of the function keys between <F1> to <F12> to power on the system.

**[Mouse Left]:** Double click the mouse left button to power on the system.

**[Mouse Right]:** Double click the mouse right button to power on the system.

**[Any KEY]:** Use any keyboard key to power on the system.

**[BUTTON ONLY]:** Use only the power button to power on the system.

**[Keyboard 98]:** Use the power-on button on the “Keyboard 98” compatible keyboard to power on the system.

**\* KB Power On Password:**

This item sets the password required in order to power on your computer. Once the password has been set, you can only power on the system by inputting the password.

**\* Hot Key Power On:**

Fifteen options are available: Ctrl+F1 ~ Ctrl+F12, Power, Wake and Any Key. The default setting is *Ctrl+F1*. You can choose the hot key you want to turn on computer power.

---

**Restore on AC Power Loss:**

This item selects the system action after an AC power failure.

**[Power Off]:** When power returns after an AC power failure, the system’s power remains off. You must press the Power button to power-on the system.

**[Power On]:** When power returns after an AC power failure, the system’s power will be powered on automatically.

**[Last State]:** When power returns after an AC power failure, the system will return to the state where you left off before power failure occurs. If the system’s power is off when AC power failure occurs, it will remain off when power returns. If the system’s power is on when AC power failure occurs, the system will power-on when power returns.

---

### 3-7. PnP/PCI Configurations

Phoenix - AwardBIOS CMOS Setup Utility PnP/PCI Configurations		
		Item Help
Init Display First	PCI Slot	
Resources Controlled By	Auto	
IRQ Resources	Press Enter	
PCI/VGA Palette Snoop	Disabled	
PCI Latency Timer (CLK)	32	
PIRQ_0 Use IRQ No.	Auto	
PIRQ_1 Use IRQ No.	Auto	
PIRQ_2 Use IRQ No.	Auto	
PIRQ_3 Use IRQ No.	Auto	
PIRQ_4 Use IRQ No.	Auto	
PIRQ_5 Use IRQ No.	Auto	
PIRQ_6 Use IRQ No.	Auto	
PIRQ_7 Use IRQ No.	Auto	
** PCI Express relative items **		
Maximum Payload Size	4096	
↑ ↓ → ← : Move Enter : Select +/- /PU/PD : Value F10 : Save ESC : Exit F1 : General Help F5 : Previous Values F6 : Fail-Safe Defaults F7 : Optimized Defaults		

**Init Display First:**

This item selects which display slot to be initialized first when the system boots.

[PCI Slot]: When the system boots, it will first initialize PCI.

[PCIEx]: When the system boots, it will first initialize PCIE.

**Resources Controlled By:**

This item configures all of the boot and Plug-and-Play compatible devices.

[Auto]: The system will automatically detect the settings.

[Manual]: Choose the specific IRQ resources in the "IRQ Resources" menu.

**↳ IRQ Resources:**

Click <Enter> key to enter its submenu:

This item sets each system interrupt to either [PCI Device] or [Reserved].

Phoenix - AwardBIOS CMOS Setup Utility IRQ Resources		
		Item Help
IRQ-4 assigned to	PCI Device	
IRQ-5 assigned to	PCI Device	
IRQ-7 assigned to	PCI Device	
IRQ-10 assigned to	PCI Device	
IRQ-11 assigned to	PCI Device	
↑ ↓ → ← : Move Enter : Select +/- /PU/PD : Value F10 : Save ESC : Exit F1 : General Help F5 : Previous Values F6 : Fail-Safe Defaults F7 : Optimized Defaults		

## **Back to PnP/PCI Configurations Setup Menu:**

---

### **PCI/VGA Palette Snoop:**

This item determines whether the MPEG ISA/VESA VGA cards can work with PCI/VGA or not.

**[Disabled]:** MPEG ISA/VESA VGA cards do not work with PCI/VGA.

**[Enabled]:** MPEG ISA/VESA VGA cards work with PCI/VGA.

---

### **PCI Latency Timer(CLK):**

The DEC (decimal) numbers from 0 to 255 are available, with the default setting at 32. This item can let you set the PCI latency clock delay time. Which means, you can set how many clocks you want it delay.

---

### **PIRQ\_0 Use IRQ No. ~ PIRQ 7 Use IRQ No.:**

This item specifies the IRQ number manually or automatically for the devices installed on PCI slots.

---

### **Maximum Payload Size:**

This item sets the maximum TLP payload size for the PCI Express devices.

---

## **3-8. Load Fail-Safe Defaults**

---

This option loads the BIOS default values for the most stable, minimal-performance system operations.

## **3-9. Load Optimized Defaults**

---

This option loads the BIOS default values that are factory settings for optimal-performance system operations.

## **3-10. Set Password**

---

This option protects the BIOS configuration or restricts access to the computer itself.

## **3-11. Save & Exit Setup**

---

This option saves your selections and exits the BIOS setup menu.

## **3-12. Exit Without Saving**

---

This option exits the BIOS setup menu without saving any change.

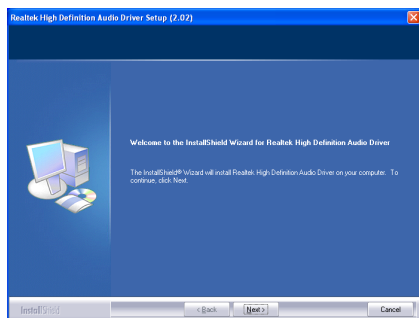
---

## Appendix A. Install Audio Driver

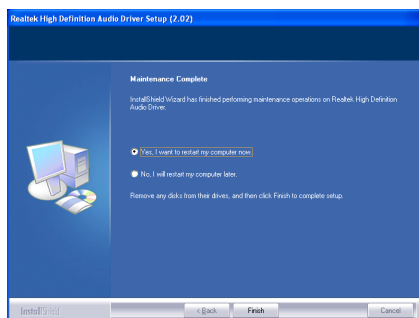
The installation procedures and screen shots in this section are based on Windows XP operating system. For those of other OS, please follow its on-screen instruction.

Insert the Driver & Utility CD into CD-ROM drive, it should execute the installation program automatically. If not, double-click the execution file at the main directory of this CD to enter the installation menu.

After entering the installation menu, move your cursor to [Drivers] tab. Click [Audio Driver]. The following screen appears.



1. Click [Next].



2. Choose [Yes, I want to restart my computer now.], and click [Finish] to restart your computer.

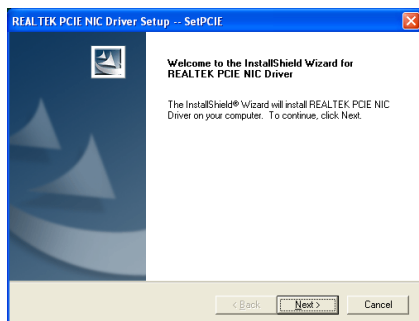


## Appendix B. Install Realtek LAN Driver

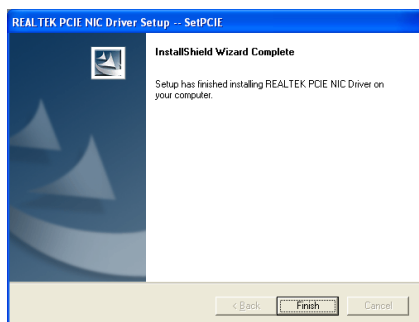
The installation procedures and screen shots in this section are based on Windows XP operating system. For those of other OS, please follow its on-screen instruction.

Insert the Driver & Utility CD into CD-ROM drive, it should execute the installation program automatically. If not, double-click the execution file at the main directory of this CD to enter the installation menu.

After entering the installation menu, move your cursor to [Drivers] tab. Click [Realtek LAN Driver]. The following screen appears.



1. Click [Next].



2. Click [Finish]



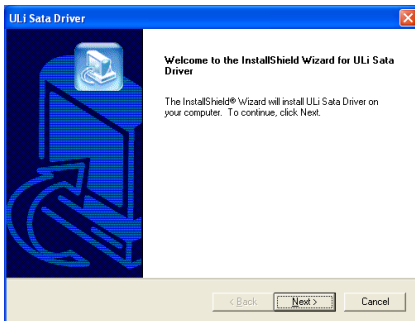


## Appendix C. Install ULI1575 SATA RAID Driver

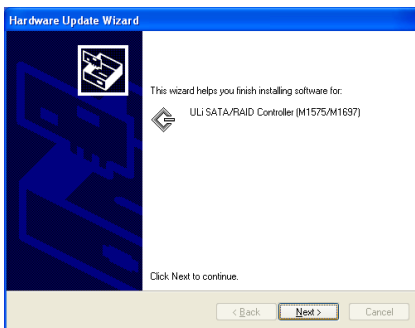
The installation procedures and screen shots in this section are based on Windows XP operating system. For those of other OS, please follow its on-screen instruction.

Insert the Driver & Utility CD into CD-ROM drive, it should execute the installation program automatically. If not, double-click the execution file at the main directory of this CD to enter the installation menu.

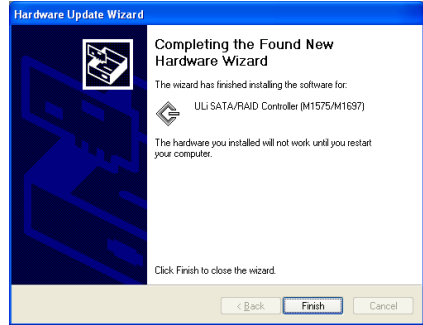
After entering the installation menu, move your cursor to [Drivers] tab. Click [ULi1575 SATA RAID Driver]. The following screen appears.



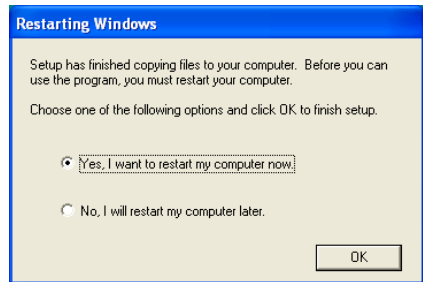
1. Click [Next].



2. Click [Next].



3. Click [Finish]



4. Choose [Yes, I want to restart my computer now.], and click [OK] to complete setup.

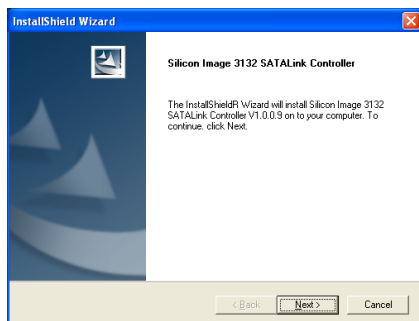


## Appendix D. Install Sil3132 SATA Driver

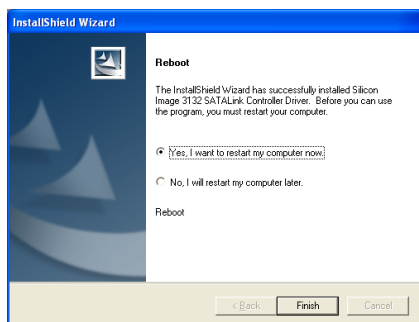
The installation procedures and screen shots in this section are based on Windows XP operating system. For those of other OS, please follow its on-screen instruction.

Insert the Driver & Utility CD into CD-ROM drive, it should execute the installation program automatically. If not, double-click the execution file at the main directory of this CD to enter the installation menu.

After entering the installation menu, move your cursor to [Drivers] tab. Click [Sil3132 SATA Driver]. The following screen appears.



1. Click [Next].



2. Choose [Yes, I want to restart my computer now.], and click [OK] to complete setup.

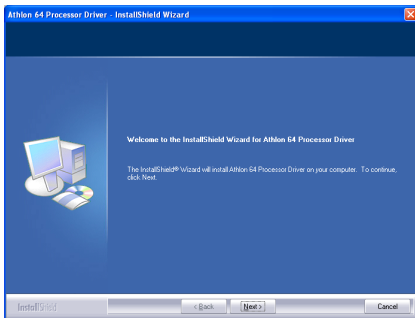


## Appendix E. Install Cool'n'Quiet Driver

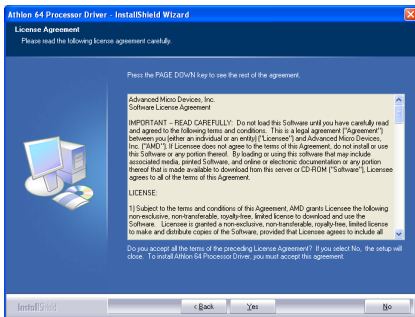
The installation procedures and screen shots in this section are based on Windows XP operating system. For those of other OS, please follow its on-screen instruction.

Insert the Driver & Utility CD into CD-ROM drive, it should execute the installation program automatically. If not, double-click the execution file at the main directory of this CD to enter the installation menu.

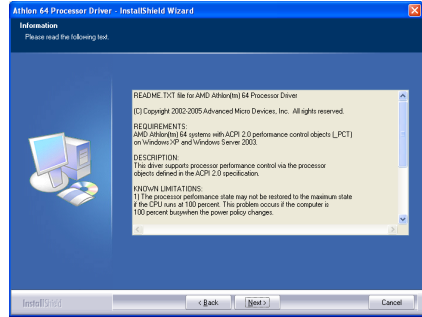
After entering the installation menu, move your cursor to [Drivers] tab. Click [Cool'n'Quiet Driver]. The following screen appears.



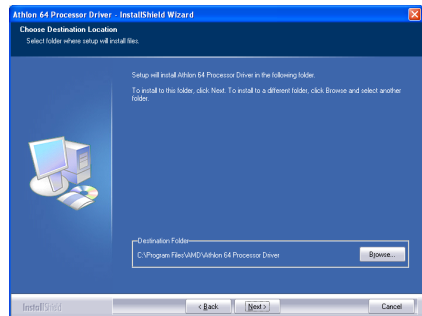
1. Click [Next].



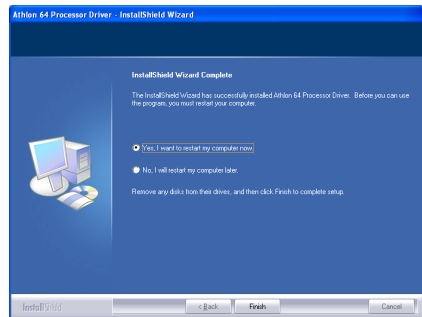
2. Click [Yes].



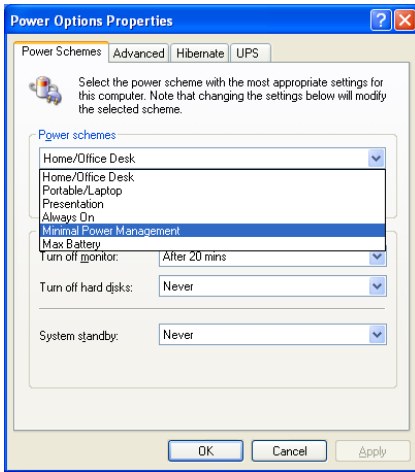
3. Click [Next].



4. Click [Next].



5. Choose [Yes, I want to restart my computer now.], and click [Finish] to complete setup.



6. After the system restarted, open the “Power Options” from the control panel and choose the power scheme “Minimal Power Management” to enable Cool ‘n’ Quiet.

**NOTE:** For Windows 2000 or ME system, an AMD Cool ‘n’ Quiet tab will appear under “Power Options” when the Cool ‘n’ Quiet software for Windows 2000 and ME is installed. This must be set to “Automatic Mode” for Cool ‘n’ Quiet to be enabled.

## **Appendix F. Install USB 2.0 Driver**

---

**NOTE:** The installation for USB 2.0 driver for Windows XP or Windows 2000 is currently available by updating the latest Service Pack from Microsoft's web site.



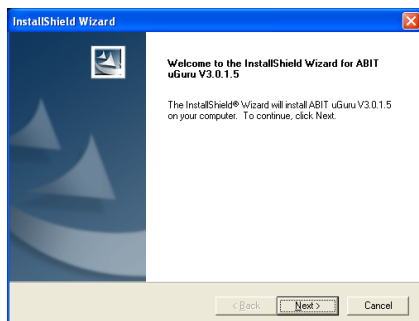


## Appendix G. Install ABIT $\mu$ Guru Utility

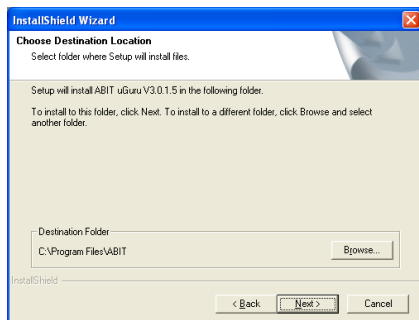
The installation procedures and screen shots in this section are based on the Windows XP operating system. For other operating systems, please follow the on-screen instructions.

Insert the Driver & Utility CD into the CD-ROM drive. It should execute the installation program automatically. If not, double-click the executable file located in the main directory of this CD to enter the installation menu.

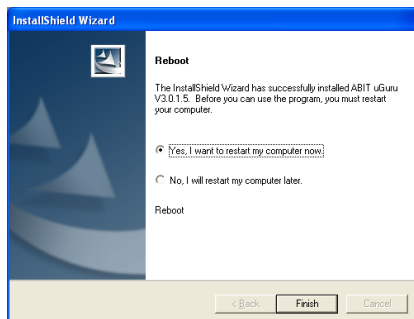
After entering the installation menu, move your cursor to the [ABIT Utility] tab. Click [ABIT  $\mu$ Guru]. The following screen appears.



1. Click [Next].



2. Click [Next].



3. Choose [Yes, I want to restart my computer now.], and click [Finish] to complete setup.



## Appendix H. POST Code Definition

### AWARD POST Code Definitions

POST (hex)	Description
CF	Test CMOS R/W functionality
C0	Early chipset initialization: -Disable shadow RAM -Disable L2 cache (socket 7 or below) -Program basic chipset registers
C1	Detect memory -Auto-detection of DRAM size, type and ECC -Auto-detection of L2 cache (socket 7 or below)
C3	Expand compressed BIOS code to DRAM
C5	Call chipset hook to copy BIOS back to E000 & F000 shadow RAM
01	Expand the Xgroup codes locating in physical address 1000:0
03	Initial Superio_Early_Init switch
05	1. Blank out screen 2. Clear CMOS error flag
07	1. Clear 8042 interface 2. Initialize 8042 self-test
08	1. Test special keyboard controller for Winbond 977 series Super I/O chips 2. Enable keyboard interface
0A	1. Disable PS/2 mouse interface (optional) 2. Auto detect ports for keyboard & mouse followed by a port & interface swap (optional) 3. Reset keyboard for Winbond 977 series Super I/O chips
0E	Test F000h segment shadow to see whether it is R/W-able or not. If test fails, keep beeping the speaker
10	Auto detect flash type to load appropriate flash R/W codes into the run time area in F000 for ESCD & DMI support
12	Use walking 1's algorithm to check out interface in CMOS circuitry. Also set real-time clock power status, and then check for override
14	Program chipset default values into chipset. Chipset default values are MODBINable by OEM customers
16	Initial onboard clock generator if Early_Init_Onboard_Generator is defined. See also POST 26.
18	Detect CPU information including brand, SMI type (Cyrix or Intel) and CPU level (586 or 686)
1B	Initial interrupts vector table. If no special specified, all H/W interrupts are directed to SPURIOUS_INT_HDLR & S/W interrupts to SPURIOUS_soft_HDLR.
1D	Initial EARLY_PM_INIT switch

<b>1F</b>	Load keyboard matrix (notebook platform)
<b>21</b>	HPM initialization (notebook platform)
<b>23</b>	1. Check validity of RTC value: e.g. a value of 5Ah is an invalid value for RTC minute. 2. Load CMOS settings into BIOS stack. If CMOS checksum fails, use default value instead.
<b>24</b>	Prepare BIOS resource map for PCI & PnP use. If ESCD is valid, take into consideration of the ESCD's legacy information.
<b>25</b>	Early PCI Initialization: -Enumerate PCI bus number. -Assign memory & I/O resource -Search for a valid VGA device & VGA BIOS, and put it into C000:0
<b>26</b>	1. If Early_Init_Onboard_Generator is not defined Onboard clock generator initialization. Disable respective clock resource to empty PCI & DIMM slots. 2. Init onboard PWM 3. Init onboard H/W monitor devices
<b>27</b>	Initialize INT 09 buffer
<b>29</b>	1. Program CPU internal MTRR (P6 & PII) for 0-640K memory address. 2. Initialize the APIC for Pentium class CPU. 3. Program early chipset according to CMOS setup. Example: onboard IDE controller. 4. Measure CPU speed.
<b>2B</b>	Invoke Video BIOS
<b>2D</b>	1. Initialize double-byte language font (Optional) 2. Put information on screen display, including Award title, CPU type, CPU speed, full screen logo.
<b>33</b>	Reset keyboard if Early_Reset_KB is defined e.g. Winbond 977 series Super I/O chips. See also POST 63.
<b>35</b>	Test DMA Channel 0
<b>37</b>	Test DMA Channel 1.
<b>39</b>	Test DMA page registers.
<b>3C</b>	Test 8254
<b>3E</b>	Test 8259 interrupt mask bits for channel 1
<b>40</b>	Test 8259 interrupt mask bits for channel 2
<b>43</b>	Test 8259 functionality
<b>47</b>	Initialize EISA slot
<b>49</b>	1. Calculate total memory by testing the last double word of each 64K page 2. Program writes allocation for AMD K5 CPU
<b>4E</b>	1. Program MTRR of M1 CPU 2. Initialize L2 cache for P6 class CPU & program CPU with proper cacheable range 3. Initialize the APIC for P6 class CPU 4. On MP platform, adjust the cacheable range to smaller one in case the cacheable ranges between each CPU are not identical
<b>50</b>	Initialize USB
<b>52</b>	Test all memory (clear all extended memory to 0)
<b>53</b>	Clear password according to H/W jumper (Optional)

55	Display number of processors (multi-processor platform)
57	Display PnP logo Early ISA PnP initialization -Assign CSN to every ISA PnP device
59	Initialize the combined Trend Anti-Virus code
5B	(Optional Feature) Show message for entering AWDFLASH.EXE from FDD (optional)
5D	1. Initialize Init_Onboard_Super_IO 2. Initialize Init_Onboard_AUDIO
60	Okay to enter Setup utility; i.e. not until this POST stage can users enter the CMOS setup utility
63	Reset keyboard if Early_Reset_KB is not defined
65	Initialize PS/2 Mouse
67	Prepare memory size information for function call: INT 15h ax=E820h
69	Turn on L2 cache
6B	Program chipset registers according to items described in Setup & Auto-configuration table
6D	1. Assign resources to all ISA PnP devices 2. Auto assign ports to onboard COM ports if the corresponding item in Setup is set to "AUTO"
6F	1. Initialize floppy controller 2. Set up floppy related fields in 40:hardware
75	Detect & install all IDE devices: HDD, LS120, ZIP, CDROM ...
76	(Optional Feature) Enter AWDFLASH.EXE if: -AWDFLASH is found in floppy drive -ALT+F2 is pressed
77	Detect serial ports & parallel ports.
7A	Detect & install co-processor
7C	Init HDD write protect
7F	Switch back to text mode if full screen logo is supported -If errors occur, report errors & wait for keys -If no errors occur or F1 key is pressed to continue: Clear EPA or customization logo
<b>E8POST.ASM starts</b>	
82	1. Call chipset power management hook 2. Recover the text font used by EPA logo (not for full screen logo) 3. If password is set, ask for password
83	Save all data in stack back to CMOS
84	Initialize ISA PnP boot devices
85	1. USB final Initialization 2. Switch screen back to text mode
87	NET PC: Build SYSID Structure
89	1. Assign IRQs to PCI devices 2. Set up ACPI table at top of the memory.

<b>8B</b>	<ol style="list-style-type: none"> <li>1. Invoke all ISA adapter ROMs</li> <li>2. Invoke all PCI ROMs (except VGA)</li> </ol>
<b>8D</b>	<ol style="list-style-type: none"> <li>1. Enable/Disable Parity Check according to CMOS setup</li> <li>2. APM Initialization</li> </ol>
<b>8F</b>	Clear noise of IRQs
<b>93</b>	Read HDD boot sector information for Trend Anti-Virus code
<b>94</b>	<ol style="list-style-type: none"> <li>1. Enable L2 cache</li> <li>2. Program Daylight Saving</li> <li>3. Program boot up speed</li> <li>4. Chipset final initialization.</li> <li>5. Power management final initialization</li> <li>6. Clear screen &amp; display summary table</li> <li>7. Program K6 write allocation</li> <li>8. Program P6 class write combining</li> </ol>
<b>95</b>	Update keyboard LED & typematic rate
<b>96</b>	<ol style="list-style-type: none"> <li>1. Build MP table</li> <li>2. Build &amp; update ESCD</li> <li>3. Set CMOS century to 20h or 19h</li> <li>4. Load CMOS time into DOS timer tick</li> <li>5. Build MSIRQ routing table</li> </ol>
<b>FF</b>	Boot attempt (INT 19h)

**AC2005 POST Code Definition:**

POST (hex)	Description
<b>Power On Sequence</b>	
8.1.	Start power on sequence
8.2.	Enable ATX power supply
8.3.	ATX power supply ready
8.4.	DDR voltage ready
8.5.	Setup PWM for CPU core voltage
8.6.	Assert PWM for CPU core voltage
8.7.	Check CPU core voltage
8.8.	CPU core voltage ready
8.9.	Initial clock generator IC
8.A.	North Bridge chipset voltage ready
8.B.	AGP voltage ready
8.C.	3VDUAL voltage ready
8.D.	VDDA 2.5V voltage ready
8.D.	GMCHVTT voltage ready
8.E.	Check CPU fan speed
8.F.	Assert all power ready
9.0.	Complete $\mu$ Guru initial process AWARD BIOS take over booting job
<b>Power Off Sequence</b>	
9.1.	Start power off sequence
9.2.	De-Assert all power
9.3.	De-Assert power on
9.4.	De-Assert LDT Bus power
9.5.	De-Assert PWM for CPU core voltage
9.6.	De-Assert CPU core voltage
9.7.	Check CPU core voltage
9.8.	De-Assert ATX power supply
9.9.	Complete power off sequence
<b>Others</b>	
F.0.	Button reset
F.1.	SoftMenu reset
F.2.	Power on sequence timeout
F.3.	Power off sequence timeout

**NOTE:** The decimal point lights up when executing the AC2005 POST action.





---

## Appendix I. Troubleshooting (Need Assistance?)

---

### Q & A:

**Q: Do I need to clear the CMOS before I use a new motherboard to assemble my new computer system?**

A: Yes, we highly recommend that you clear the CMOS before installing a new motherboard. Please move the CMOS jumper from its default 1-2 position to 2-3 for a few seconds, and then back. When you boot up your system for the first time, follow the instructions in the user's manual to load the optimized defaults.

**Q: If my system hangs when I update the BIOS or set the wrong CPU parameters, what should I do?**

A: Whenever you update the BIOS or if the system hangs due to wrong CPU parameters setting, always clear CMOS jumper before booting up again.

**Q: Why does the system fail to boot up again right after a mechanical power-off?**

A: Please keep a 30-second interval between each mechanical power On/Off.

**Q: Why does the system fail to boot up and nothing displays on the screen after I did some overclocking or non-standard settings inside the BIOS? Is the motherboard dead? Do I need to return it to where I bought from or go through an RMA process?**

A: It should not cause hardware or permanent damage to motherboard when BIOS settings were changed from default to over-clocking or non-standard status.

We suggest the following three troubleshooting methods to discharge CMOS data, recover the hardware default status, and then making the motherboard work again. There is no need to bother returning the motherboard to where you bought it from or go through an RMA process.

**Step 1.** Switch off the power supply unit and then switch it on again after one minute. If there is no power switch on the power supply unit, disconnect its power cord for one minute and then reconnect.

Press and hold the <Insert> key on the keyboard, and press the power-on button to boot up system. If it works, release the <Insert> key and hit <Del> key to enter the BIOS setup page to apply the correct settings.

If the situation remains the same, repeat the procedures in Step 1 for three times, or try Step 2.

**Step 2.** Switch off the power supply unit or disconnect the power cord. Open the chassis cover. Locate the CCMOS jumper near the button battery. Change the jumper position from default 1-2 to 2-3 for one minute to discharge the CMOS data, and then put it back to default 1-2 position.

Close the chassis and switch on the power supply unit or plug in the power cord. Press the power-on button to boot up system. If it works, hit <Del> key to enter the BIOS setup page to do the correct settings.

If the situation remains the same, try Step 3.

**Step 3.** The same procedure as Step 2, but while discharging the CMOS data, pull out the ATX power connectors from motherboard and remove the button battery during CMOS discharge.

**Q: How can I get a quick response to my request for technical support?**

A: Be sure to follow the guidelines as stated in the “Technical Support Form” section of this manual.

If you have a problem during operation, in order to help our technical support personnel quickly determine the problem with your motherboard and give you the answers you need, eliminate any peripheral that is not related to the problem, and indicate it on the form. Fax this form to your dealer or to the company where you bought the hardware in order to receive prompt technical support. (You can refer to the examples given below)

**Example 1:**

With a system including: motherboard (with CPU, DRAM...) HDD, CD-ROM, FDD, VGA CARD, MPEG CARD, SCSI CARD, SOUND CARD, etc. If you cannot boot up after the system is assembled, check the key components of the system using the procedure described below. First remove all interface cards except the VGA card and try to reboot.

**If you still cannot boot up:** Try installing another brand/model VGA card and see if the system will start. If it still does not start, note the VGA card model, motherboard model, Bios identification number, and CPU on the technical support form (refer to main instructions), and describe the problem in the space provided.

**If you can boot up:** Insert the interface cards you have removed back into the system one by one, and try to start the system each time you insert a card until the system will not start. Keep the VGA card and the interface card that caused the problem inserted on the motherboard, remove any other cards or peripheral, and start again. If you still cannot start, note the information related to both cards in the add-on Card space provided, and don't forget to indicate the motherboard model, version, BIOS identification number, CPU (refer to main instructions), and give a description of the problem.

**Example 2:**

With a system including the motherboard (with CPU, DRAM...) HDD, CD-ROM, FDD, VGA CARD, LAN CARD, MPEG CARD, SCSI CARD, SOUND CARD, after assembly and after having installed the sound card driver, when you restart the system, it resets automatically when it runs the sound card Driver,. This problem may be due to the sound card driver. During the Starting DOS... procedure, press SHIFT (BY-PASS) key, to skip CONFIG.SYS and AUTOEXEC.BAT; edit CONFIG.SYS with a text editor, and in line that loads the sound card driver, add a remark REM, in order to disable the sound card driver. See the example below.

```
CONFIG.SYS:
DEVICE=C:\DOS\HIMEM.SYS
DEVICE=C:\DOS\EMM386.EXE HIGHSCAN
DOS=HIGH, UMB
FILES=40
BUFFERS=36
REM DEVICEHIGH=C:\PLUGPLAY\DWCFGMG.SYS
LASTDRIVE=Z
```

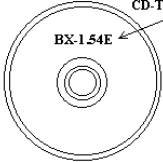
Restart the system. If the system starts and does not reset, you can be sure that the problem is due to the sound card driver. Write down the sound card model, motherboard model, BIOS identification number on the technical support file (refer to main instructions), and describe the problem in the space provided.


We will show you how to fill the “Technical Support Form”.

**Main instructions:**

To fill in this “**Technical Support Form**”, refer to the step-by-step instructions given below:

- 1\* **MODEL:** Note the model number given in your user’s manual.  
Example: AT8 32X
- 2\* **Motherboard model number (REV):** Note the motherboard model number labeled on the motherboard as “REV:\*.\*\*”.  
Example: REV: 1.00
- 3\* **BIOS ID and Part Number:** See the on screen message.
4. **DRIVER REV:** Note the driver version number indicated on the DEVICE DRIVER disk (if any) as “Release \*.\*”. For example:
 




- 5\* **OS/APPLICATION:** Indicate the operating system and applications you are running on the system.  
Example: MS-DOS® 6.22, Windows® 98 SE, Windows® 2000, etc....
- 6\* **CPU:** Indicate the brand and the speed (MHz) of your CPU.  
Example:(A) In the “Brand” space, write “Intel”; in the “Specifications” space, write “Pentium® 4 1.9GHz”.
7. **HDD:** Indicate the brand and specifications of your HDD(s); specify if the HDD is using IDE1 or IDE2. If you know the disk capacity, indicate it and check (“✓”) “”; in case you give no indication, we will consider that your HDD is “IDE1” Master.  
Example: In the “HDD” space, check the box; in the Brand space, write “Seagate”; in the Specifications space, write “ST31621A (1.6GB)”.
8. **CD-ROM Drive:** Indicate the brand and specifications of your CD-ROM drive. Specify if it uses IDE1 or IDE2 , and check (“✓”) “”; in case you give no indication, we will consider that your CD-ROM is “IDE2” Master.  
Example: In the “CD-ROM drive” space, check the box, in the Brand space, write “Mitsumi”, in the Specifications space, write “FX-400D”.
9. **System Memory (DDR SDRAM):** Indicate the brand and specifications (DDR DIMM) of your system memory. Such as Density, Description, Module Components, Module Part Number, CAS Latency, and Speed (MHz).  
For example: In the Brand space, write “**Micron**”; in the Specifications space, write: **Density:** 128MB, **Description:** SS 16 Megx72 2.5V ECC Gold, **Module Components:** (9) 16 Megx 8, **Module Part Number:** MT9VDDT1672AG, **CAS Latency:** 2, **Speed (MHz):** 200 MHz.  
Please give us the detailed information of your DDR SDRAM module; it will help us to simulate the problems you met.
10. **ADD-ON CARD:** Indicate which add-on cards you are *absolutely sure* are related to the problem. If you cannot identify the problem’s origin, indicate all the add-on cards inserted into your system.

**NOTE:** Items between the “\*” are absolutely necessary.



## **Appendix J. How to Get Technical Support**

---

(From our website) <http://www.abit.com.tw>

(In North America) <http://www.abit-usa.com>

(In Europe) <http://www.abit.nl>

Thank you for choosing ABIT products. ABIT sells all our products through distributors, resellers and system integrators; we have no direct sales to end-users. Before sending email for tech support please check with your resellers or integrators if you need any services, they are the ones who sold you your system and they should know best as to what can be done, how they serve you is a good reference for future purchases.

We appreciate every customer and would like to provide the best service to you. Providing fast service to our customers is our top priority. However we receive many phone calls and a huge amount of email from all over the world. At the present time it is impossible for us to respond to every single inquiry.

We have done many compatibility tests and reliability tests to make sure our products have the best quality and compatibility. In case you need service or technical support, please understand the constraints that we have and **always check with the reseller who sold the product to you first.**

To expedite service, we recommend that you follow the procedures outlined below before contacting us. With your help, we can meet our commitment to provide the best service to the greatest number of ABIT customers:

- 1. Check the Manual.** It sounds simple but we have taken a lot of care in making a well-written and thorough manual. It is full of information that doesn't only pertain to motherboards. The CD-ROM included with your board will have the manual as well as drivers. If you don't have either one, go to our Program Download area of the website or our FTP server.
- 2. Download latest BIOS, software or drivers.** Please go to our Program Download area on our website to check to see if you have the latest BIOS. They are developed over periods of time to fix bugs or incompatibilities. **Also please make sure you have the latest drivers from your peripheral card makers!**
- 3. Check the ABIT Technical Terms Guide and FAQ on our website.** We are trying to expand and make the FAQs more helpful and information rich. Let us know if you have any suggestions. For hot topics, check out our HOT FAQ!

4. **Internet Newsgroups.** These are a great source of information and many people there can offer help. ABIT's Internet News group, [alt.comp.peripherals.mainboard.abit](http://alt.comp.peripherals.mainboard.abit), is an ideal forum for the public to exchange information and discuss experiences they have had with ABIT products. Many times you will see that your question has already been asked before. This is a public Internet news group and it is reserved for free discussions. Here is a list of some of the more popular ones:

[alt.comp.peripherals.mainboard.abit](http://alt.comp.peripherals.mainboard.abit)

[comp.sys.ibm.pc.hardware.chips](http://comp.sys.ibm.pc.hardware.chips)

[alt.comp.hardware.overclocking](http://alt.comp.hardware.overclocking)

[alt.comp.hardware.homebuilt](http://alt.comp.hardware.homebuilt)

[alt.comp.hardware.pc-homebuilt](http://alt.comp.hardware.pc-homebuilt)

5. **Ask your reseller.** Your ABIT authorized distributor should be able to provide the fastest solution to your technical problem. We sell our products through distributors who sell to resellers and stores. Your reseller should be very familiar with your system configuration and should be able to solve your problem much more efficiently than we could. After all, your reseller regards you as an important customer who may purchase more products and who can urge your friends to buy from him or her as well. They integrated and sold the system to you. They should know best what your system configuration is and your problem. They should have reasonable return or refund policies. How they serve you is also a good reference for your next purchase.
6. **Contacting ABIT.** If you feel that you need to contact ABIT directly you can send email to the ABIT technical support department. First, please contact the support team for the branch office closest to you. They will be more familiar with local conditions and will have better insight as to which resellers offer what products and services. Due to the huge number of emails coming in every day and other reasons, such as the time required for problem reproduction, we will not be able to reply to every email. Please understand that we are selling through distribution channels and while we don't have the resources to serve every end-user, we will do our best to help every customer. Please also remember that for many of our technical support team English is a second language. You will have a better chance of getting a helpful answer if your question can be quickly understood. Be sure to use very, simple, concise language that clearly states the problem, avoid rambling or flowery language, and always list your system components and operating system. Here is the contact information for our branch offices:

---

**North America and  
South America****ABIT Computer (U.S.A.) Corporation**2901 Bayview Drive,  
Fremont, CA 94538, U.S.A.

Tel: 1-510-623-0500

Fax: 1-510-623-1092

Sales: [sales@abit-usa.com](mailto:sales@abit-usa.com)Latin America Sales: [ventas@abit-usa.com](mailto:ventas@abit-usa.com)Marketing: [marketing@abit-usa.com](mailto:marketing@abit-usa.com)Web Site: <http://www.abit-usa.com>**RMA Center:** <http://rma.abit-usa.com/>

---

**UK and Ireland****ABIT Computer (U.K.) Corporation Ltd.**Unit 3, 24-26 Boulton Road, Stevenage,  
Herts SG1 4QX, UK

Tel: 44-1438-228888

Fax: 44-1438-226333

E-mail: [sales@abitcomputer.co.uk](mailto:sales@abitcomputer.co.uk)

---

**Germany and Benelux (Belgium,  
Netherlands, Luxembourg),  
France, Italy, Spain, Portugal,  
Greece, Denmark, Norway,  
Sweden, Finland, and  
Switzerland****AMOR Computer B.V. (ABIT's European Office)**Jan van Riebeeckweg 15, 5928LG, Venlo,  
The Netherlands

Tel: 31-77-3204428

Fax: 31-77-3204420

Sales: [sales@abit.nl](mailto:sales@abit.nl)Web Site: <http://www.abit.nl>

---

**Austria, Czech, Romania,  
Bulgaria, Slovakia, Croatia,  
Bosnia, Serbia, and Macedonia****Asguard Computer Ges.m.b.H**Schmalbachstrasse 5,  
A-2201 Gerasdorf / Wien, Austria

Tel: 43-1-7346709

Fax: 43-1-7346713

E-mail: [asguard@asguard.at](mailto:asguard@asguard.at)

---

**Shanghai****ABIT Computer (Shanghai) Co. Ltd.**

Tel: 86-21-6235-1829

Fax: 86-21-6235-1832

Web Site: <http://www.abit.com.cn>

---

**Poland****ABIT Computer (Poland) Co. Ltd.**Przedstawicielstwo w Polsce ul. Wita Stwosza 28,  
50-149 Wrocław

Tel: 48 71 780 78 65 / 66

Fax: 48 71 372 30 87

**Taiwan Head Office**  
*(Serving all other territories  
not listed above.  
Taiwan is 8+ GMT time,  
and may have different holiday  
calendar from yours.)*

**ABIT Computer Corporation**  
No. 323, Yang Guang St., Neihu,  
Taipei, 114, Taiwan  
Tel: 886-2-8751-8888  
Fax: 886-2-8751-3382  
Sales: [sales@abit.com.tw](mailto:sales@abit.com.tw)  
Marketing: [market@abit.com.tw](mailto:market@abit.com.tw)  
Web Site: <http://www.abit.com.tw>

---

7. **RMA Service.** If your system has been working but it just stopped, but you have not installed any new software or hardware recently, it is likely that you have a defective component. Please contact the reseller from whom you bought the product. You should be able to get RMA service there.
8. **Reporting Compatibility Problems to ABIT.** Because of tremendous number of email messages we receive every day, we are forced to give greater weight to certain types of messages than to others. For this reason, any compatibility problem that is reported to us, giving detailed system configuration information and error symptoms will receive the highest priority. For the other questions, we regret that we may not be able to reply directly. But your questions may be posted to the Internet news group in order that a larger number of users can have the benefit of the information. Please check the news group from time to time.

**Thank You**

**ABIT Computer Corporation**

**<http://www.abit.com.tw>**