



SEARCH

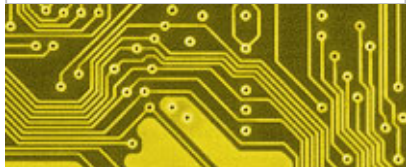
ABOUT US

DISPLAY CARD

WHAT'S NEW

CONTACT US

CHINA



KT600A-ATX

TOP ▲

CHIPSET: VIA
KT600A+VT8237
For AMD Athlon XP (K7)
processor

Product Warranty Information
download product catalogue



I915P-ATX 03/15/04
I865PE-ATX 03/10/04
I848P-ATX 02/08/04
K8T800-ATX 12/18/03
KT600A-ATX 08/01/03

Radeon X800Pro 03/15/04
Radeon 9550 02/08/04
Radeon 9200SE 03/15/04
Radeon 9200 03/10/04
Radeon 9600SE 01/12/04
Radeon 9600 02/08/04
Radeon 9600XT 12/18/03
Radeon 9800Pro 09/15/03
Radeon 9800XT 08/01/03
GeForce FX6800Ultra 08/01
GeForce FX5900XT 03/15/04
GeForce FX5700 03/10/04
GeForce FX5600XT 03/01/04
GeForce FX5200 08/05/03

Form Factor ATX (200 x 300 mm)

Target Segment Performance PC

Processor AMD Athlon XP (K7) processor with a 400 MHz FSB

- Two DIMM slots
Memory - 2xDDR400 DIMM
- Support for up to 4 GB memory

LAN 10/100 Ethernet

Chip VIA KT600A + VT8237 Chipset

Extended Slot - Five PCI 32bit slots
- One AGP8X slot

USB Eight USB 2.0 ports

Peripheral Interfaces - Two USB 2.0 ports
- Two serial ports
- One parallel port
- Two Serial ATA interfaces to support up to two Serial ATA devices and RAID function
- Two Ultra DMA 100 interface to support up to four EIDE devices
- One diskette drive interface
- PS/2 keyboard and mouse ports

Audio AD 1888 6-Channel 5.1 Audio

