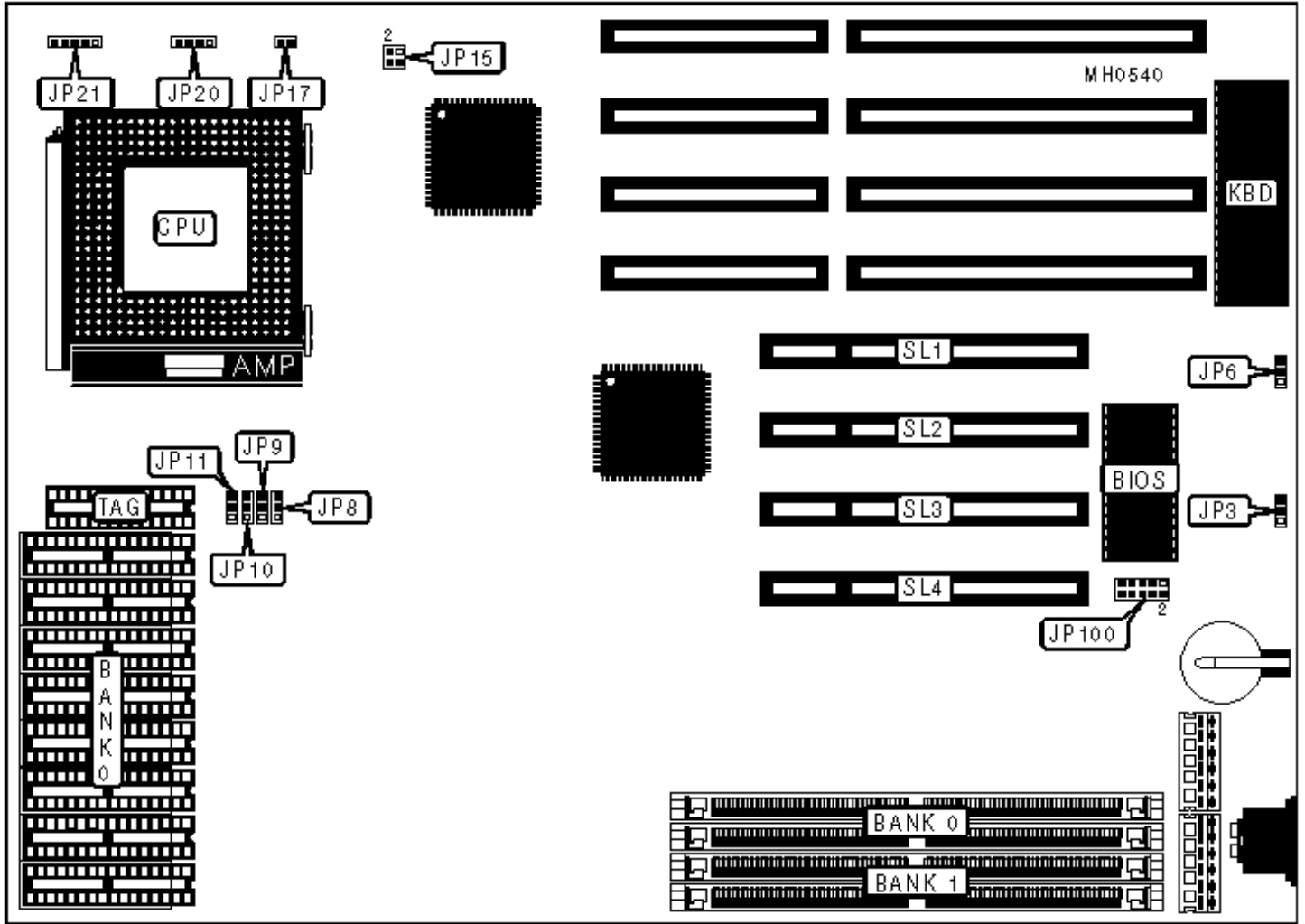


UNIDENTIFIED

P5

Configuration



CONNECTIONS

Purpose	Location	Purpose	Location
External battery	JP3	Power LED & keylock	JP21
Reset switch	JP17	Interrupt feature connector	JP100
Speaker	JP20	32-bit PCI slots	SL1 - SL4

USER CONFIGURABLE SETTINGS

Function	Jumper	Position
» BIOS type select 5V	JP6	pins 2 & 3 closed
BIOS type select 12V	JP6	pins 1 & 2 closed
» CPU speed select 60MHz	JP15	pins 2 & 4 closed
CPU speed select 66MHz	JP15	pins 1 & 3, 2 & 4 closed

DRAM CONFIGURATION

Size	Bank 0	Bank 1
2MB	(2) 256K x 36	NONE
2MB	NONE	(2) 256K x 36
4MB	(2) 256K x 36	(2) 256K x 36
4MB	(2) 512K x 36	NONE
4MB	NONE	(2) 512K x 36
6MB	(2) 512K x 36	(2) 256K x 36
6MB	(2) 256K x 36	(2) 512K x 36
8MB	(2) 512K x 36	(2) 512K x 36
8MB	(2) 1M x 36	NONE
8MB	NONE	(2) 1M x 36
10MB	(2) 1M x 36	(2) 256K x 36

10MB	(2) 256K x 36	(2) 1M x 36
12MB	(2) 1M x 36	(2) 256K x 36
12MB	(2) 512K x 36	(2) 1M x 36
16MB	(2) 1M x 36	(2) 1M x 36
16MB	(2) 2M x 36	NONE
16MB	NONE	(2) 2M x 36
20MB	(2) 2M x 36	(2) 512K x 36
20MB	(2) 512K x 36	(2) 2M x 36
24MB	(2) 2M x 36	(2) 1M x 36
24MB	(2) 1M x 36	(2) 2M x 36
32MB	(2) 2M x 36	(2) 2M x 36
32MB	(2) 4M x 36	NONE
32MB	NONE	(2) 4M x 36
48MB	(2) 4M x 36	(2) 2M x 36
48MB	(2) 2M x 36	(2) 4M x 36
64MB	(2) 4M x 36	(2) 4M x 36
64MB	(2) 8M x 36	NONE
64MB	NONE	(2) 8M x 36
96MB	(2) 8M x 36	(2) 4M x 36
96MB	(2) 4M x 36	(2) 8M x 36
128MB	(2) 8M x 36	(2) 8M x 36
256MB	(2) 16M x 36	(2) 16M x 36
512MB	(2) 32M x 36	(2) 32M x 36

CACHE CONFIGURATION

Size	Bank 0	TAG
------	--------	-----

256K	(8) 32K x 8	(1) 8K x 8
256K	(8) 32K x 8	(1) 16K x 8
256K	(8) 32K x 8	(1) 32K x 8
512K	(8) 64K x 8	(1) 16K x 8
512K	(8) 64K x 8	(1) 32K x 8
1024K	(8) 128K x 8	(1) 32K x 8

Note: The 32K x 8 chips have 28 pins, and the sockets have 32. When installing these chips, insert them into the pins marked by the red boxes in the diagram, leaving the rightmost four pins empty.

CACHE JUMPER CONFIGURATION

Size	JP8	JP9	JP10	JP11
256KB	pins 1 & 2 closed	pins 1 & 2 closed	pins 1 & 2 closed	Open
512KB	Open	pins 2 & 3 closed	pins 2 & 3 closed	Open
1024KB	pins 2 & 3 closed	pins 2 & 3 closed	pins 2 & 3 closed	pins 2 & 3 closed