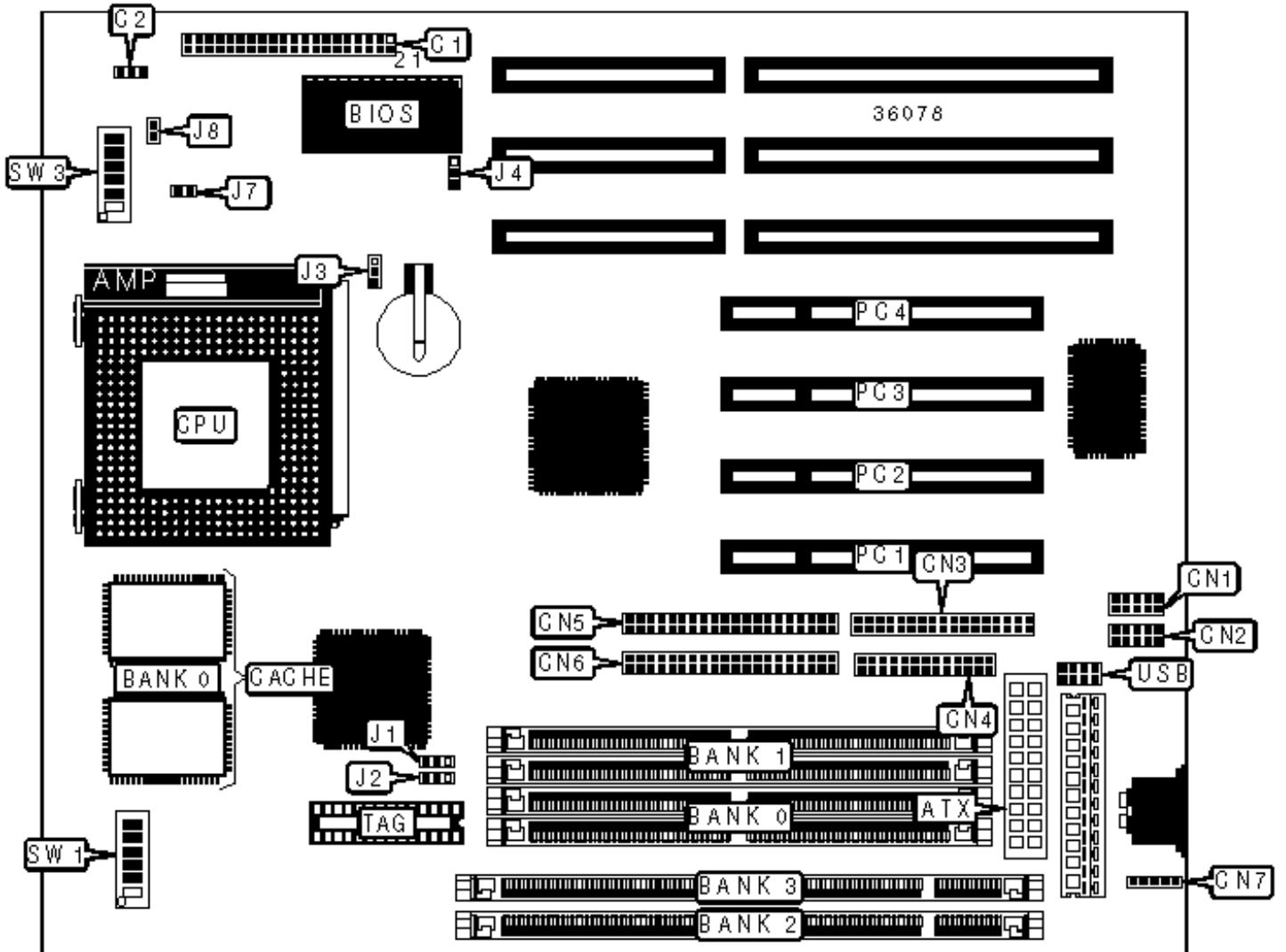


TOTEM TECHNOLOGY CO., LTD.

TM-586 TX3

Configuration



CONNECTIONS

Purpose	Location	Purpose	Location
ATX power connector	ATX	Chassis fan power	C2
IR connector	C1/pins 1 - 5	Serial port 2	CN1
IR connector	C1/pins 7 - 10	Serial port 1	CN2
Green PC connector	C1/pins 12 & 13	Parallel port	CN3
Green PC LED	C1/pins 15 & 16	Floppy drive interface	CN4
IDE interface LED	C1/pins 18 & 19	IDE interface 2	CN5
Reset switch	C1/pins 21 & 22	IDE interface 1	CN6
Power LED & keylock	C1/pins 24 - 28	PS/2 mouse interface	CN7
Speaker	C1/pins 30 - 34	32-bit PCI slots	PC1 - PC4
Soft off power supply	C1/pins 36 & 37	USB connector	USB

USER CONFIGURABLE SETTINGS

Function	Label	Position
» CMOS memory normal operation	J3	Pins 1 & 2 closed
CMOS memory clear	J3	Pins 2 & 3 closed
» Factory configured - do not alter	J4	Unidentified

SIMM CONFIGURATION

Size	Bank 0	Bank 1
8MB	(2) 1M x 36	None
16MB	(2) 2M x 36	None
16MB	(2) 1M x 36	(2) 1M x 36
24MB	(2) 2M x 36	(2) 1M x 36
32MB	(2) 4M x 36	None

32MB	(2) 2M x 36	(2) 2M x 36
40MB	(2) 4M x 36	(2) 1M x 36
48MB	(2) 4M x 36	(2) 2M x 36
64MB	(2) 8M x 36	None
64MB	(2) 4M x 36	(2) 4M x 36
72MB	(2) 8M x 36	(2) 1M x 36
80MB	(2) 8M x 36	(2) 2M x 36
96MB	(2) 8M x 36	(2) 4M x 36
128MB	(2) 8M x 36	(2) 8M x 36
128MB	(2) 16M x 36	None
136MB	(2) 16M x 36	(2) 1M x 36
144MB	(2) 16M x 36	(2) 2M x 36
160MB	(2) 16M x 36	(2) 4M x 36
192MB	(2) 16M x 36	(2) 8M x 36
256MB	(2) 16M x 36	(2) 16M x 36
Note: Board accepts EDO memory.		

DIMM CONFIGURATION		
Size	Bank 2	Bank 3
8MB	(1) 1M x 64	None
16MB	(1) 2M x 64	None
16MB	(1) 1M x 64	(1) 1M x 64
24MB	(1) 2M x 64	(1) 1M x 64
32MB	(1) 4M x 64	None
32MB	(1) 2M x 64	(1) 2M x 64
40MB	(1) 4M x 64	(1) 1M x 64

48MB	(1) 4M x 64	(1) 2M x 64
64MB	(1) 8M x 64	None
64MB	(1) 4M x 64	(1) 4M x 64
72MB	(1) 8M x 64	(1) 1M x 64
80MB	(1) 8M x 64	(1) 2M x 64
96MB	(1) 8M x 64	(1) 4M x 64
128MB	(1) 16M x 64	None
128MB	(1) 8M x 64	(1) 8M x 64
136MB	(1) 16M x 64	(1) 1M x 64
144MB	(1) 16M x 64	(1) 2M x 64
160MB	(1) 16M x 64	(1) 4M x 64
192MB	(1) 16M x 64	(1) 8M x 64
256MB	(1) 16M x 64	(1) 16M x 64

Note: Board accepts SDRAM memory.

DIMM VOLTAGE CONFIGURATION

Voltage	J1	J2
3.3v	Pins 2 & 3 closed	Pins 2 & 3 closed
5v	Pins 1 & 2 closed	Pins 1 & 2 closed

CACHE CONFIGURATION

Size	Bank 0	TAG
256KB	(1) 32K x 64	Unidentified
512KB	(1) 64K x 64	Unidentified

CPU SPEED SELECTION (CX 6X86)

CPU speed	Clock speed	Multiplier	SW1/1	SW1/2	SW1/3	SW1/4	SW1/5	SW1/6
120MHz	50MHz	2x	On	Off	Off	*	*	*
133MHz	55MHz	2x	On	Off	Off	On	On	Off
150MHz	60MHz	2x	On	Off	Off	On	Off	Off
166MHz	66MHz	2x	On	Off	Off	Off	Off	Off
200MHz	75MHz	2x	On	Off	Off	Off	On	Off

Note: * = Setting unidentified.

CPU SPEED SELECTION (CX 6X86MX)								
CPU speed	Clock speed	Multiplier	SW1/1	SW1/2	SW1/3	SW1/4	SW1/5	SW1/6
166MHz	60MHz	2.5x	On	On	Off	On	Off	Off
200MHz	66MHz	2.5x	On	On	Off	Off	Off	Off
233MHz	66MHz	3x	Off	On	Off	Off	Off	Off
266MHz	66MHz	3.5x	Off	Off	Off	Off	Off	Off

CPU SPEED SELECTION (AM 5K86)								
CPU speed	Clock speed	Multiplier	SW1/1	SW1/2	SW1/3	SW1/4	SW1/5	SW1/6
75MHz	50MHz	1.5x	Off	Off	Off	*	*	*
90MHz	60MHz	1.5x	Off	Off	Off	On	Off	Off

Note: * = Setting unidentified.

CPU SPEED SELECTION (AM K5)								
CPU speed	Clock speed	Multiplier	SW1/1	SW1/2	SW1/3	SW1/4	SW1/5	SW1/6
75MHz	50MHz	1.5x	Off	Off	Off	*	*	*
90MHz	60MHz	1.5x	Off	Off	Off	On	Off	Off
100MHz	66MHz	1.5x	Off	Off	Off	Off	Off	Off

120MHz	60MHz	1.5x	Off	Off	Off	On	Off	Off
133MHz	66MHz	1.5x	Off	Off	Off	Off	Off	Off
166MHz	66MHz	1.75x	On	On	Off	Off	Off	Off

Note: * = Setting unidentified.

CPU SPEED SELECTION (AM K6)

CPU speed	Clock speed	Multiplier	SW1/1	SW1/2	SW1/3	SW1/4	SW1/5	SW1/6
166MHz	66MHz	2.5x	On	On	Off	Off	Off	Off
200MHz	66MHz	3x	Off	On	Off	Off	Off	Off
233MHz	66MHz	3.5x	Off	Off	Off	Off	Off	Off
266MHz	66MHz	4x	On	Off	On	Off	Off	Off
300MHz	66MHz	4.5x	On	On	On	Off	Off	Off

CPU SPEED SELECTION (INTEL)

CPU speed	Clock speed	Multiplier	SW1/1	SW1/2	SW1/3	SW1/4	SW1/5	SW1/6
75MHz	50MHz	1.5x	Off	Off	Off	*	*	*
90MHz	60MHz	1.5x	Off	Off	Off	On	Off	Off
100MHz	66MHz	1.5x	Off	Off	Off	Off	Off	Off
120MHz	60MHz	2x	On	Off	Off	On	Off	Off
133MHz	66MHz	2x	On	Off	Off	Off	Off	Off
150MHz	60MHz	2.5x	On	On	Off	On	Off	Off

CPU SPEED SELECTION (INTEL MMX)

CPU speed	Clock speed	Multiplier	SW1/1	SW1/2	SW1/3	SW1/4	SW1/5	SW1/6
166MHz	66MHz	2.5x	On	On	Off	Off	Off	Off
200MHz	66MHz	3x	Off	On	Off	Off	Off	Off

233MHz	66MHz	3.5x	Off	Off	Off	Off	Off	Off
266MHz	66MHz	4x	On	Off	On	Off	Off	Off

CPU VOLTAGE SELECTION (SINGLE)

Voltage	J7	J8	SW3/1	SW3/2
3.3v	Closed	Open	On	On
3.45v	Closed	Open	On	On
3.52v	Closed	Open	On	On

CPU VOLTAGE SELECTION (SINGLE, CON'T)

Voltage	SW3/3	SW3/4	SW3/5	SW3/6
3.3v	Off	On	Off	On
3.45v	On	Off	Off	On
3.52v	On	On	Off	On

CPU VOLTAGE SELECTION (DUAL)

Voltage	J7	J8	SW3/1	SW3/2
2.2v	Open	Closed	Off	Off
2.8v	Open	Closed	On	Off
2.9v	Open	Closed	On	Off
3.2v	Open	Closed	On	On
3.3v	Open	Closed	On	Off
3.45v	Open	Closed	On	Off

CPU VOLTAGE SELECTION (DUAL, CON'T)

Voltage	SW3/3	SW3/4	SW3/5	SW3/6
---------	-------	-------	-------	-------

2.2v	On	Off	Off	On
2.8v	Off	Off	Off	On
2.9v	Off	On	Off	On
3.2v	Off	Off	Off	On
3.3v	Off	Off	Off	On
3.45v	Off	Off	On	Off