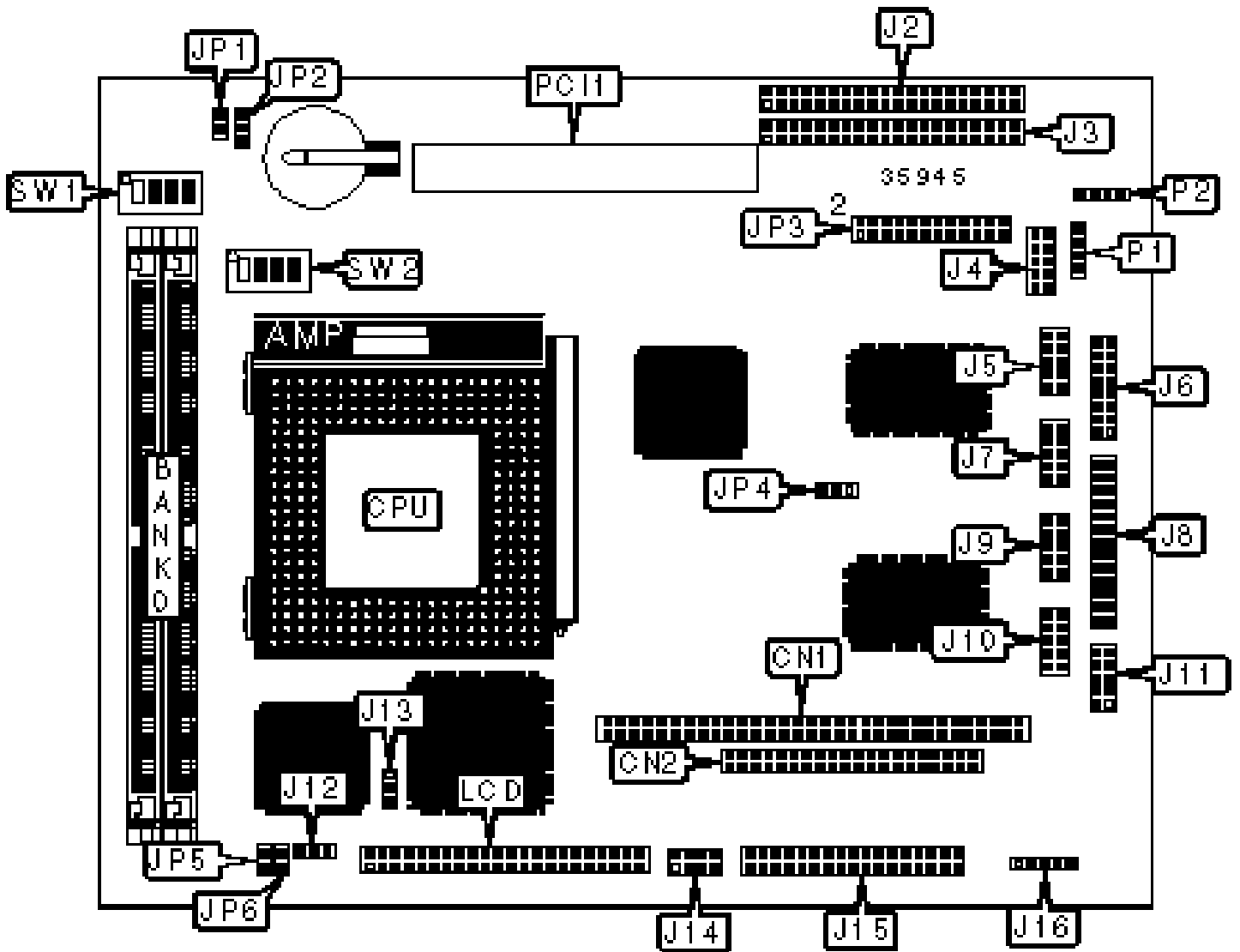


TMC RESEARCH CORPORATION

SI5TT (VER. 1.0)

Configuration



CONNECTIONS

Purpose	Location	Purpose	Location
PC/104 connector	CN1	Serial port 2	J7
PC/104 connector	CN2	Parallel port	J8
Speaker	J1/pins 1 - 4	Serial port 3	J9
Green PC connector	J1/pins 6 & 16	Serial port 4	J10
Turbo LED	J1/pins 8 & 18	Keyboard/mouse connector	J11
Reset switch	J1/pins 9 & 19	CPU fan power	J12
IDE interface LED	J1/pins 10 & 20	USB connector	J14
Power LED & keylock	J1/pins 11 - 15	Floppy drive interface	J15
IDE interface 1	J2	IR connector	J16
IDE interface 2	J3	LCD panel connector	LCD
Ethernet 10BaseT connector	J4	Power connector	P1
Serial port 1	J5	Power connector	P2
VGA interface	J6	PCI connector	PCI1

Note: The location of J1 is unidentified.

USER CONFIGURABLE SETTINGS

Function	Label	Position
DISK address select D0000	J13	Pins 1 & 2 closed
DISK address select D8000	J13	Pins 2 & 3 closed
» CMOS memory normal operation	JP2	Pins 1 & 2 closed
CMOS memory clear	JP2	Pins 2 & 3 closed
LCD voltage select 3.3v	JP4	Pins 1 & 2 closed
LCD voltage select 5v	JP4	Pins 2 & 3 closed
» Factory configured - do not alter	JP5	Unidentified

»	Factory configured - do not alter	JP6	Unidentified
---	-----------------------------------	-----	--------------

SIMM CONFIGURATION

Size	Bank 0
8MB	(2) 1M x 36
16MB	(2) 2M x 36
32MB	(2) 4M x 36
64MB	(2) 8M x 36
128MB	(2) 16M x 36

Note: Board accepts EDO memory.

CACHE CONFIGURATION

Note: The location of the cache is unidentified.

VIDEO MEMORY CONFIGURATION

Note: The location of the video memory is unidentified.

CPU SPEED SELECTION (CX 6X86L)

CPU speed	Clock speed	Multiplier	JP1	SW1/1	SW1/2	SW1/3	SW1/4
150MHz	60MHz	2x	Open	On	On	On	Off
166MHz	66MHz	2x	Open	Off	Off	On	Off

CPU SPEED SELECTION (CX 6X86MX)

CPU speed	Clock speed	Multiplier	JP1	SW1/1	SW1/2	SW1/3	SW1/4
166MHz	60MHz	2.5x	Open	On	On	On	On
200MHz	66MHz	2.5x	Open	Off	Off	On	On

200MHz	75MHz	2x	Closed	Off	Off	On	Off
233MHz	66MHz	3x	Open	Off	Off	Off	On
233MHz	75MHz	2.5x	Closed	Off	Off	On	On
300MHz	66MHz	3.5x	Open	Off	Off	Off	Off
300MHz	75MHz	3x	Closed	Off	Off	Off	On

CPU SPEED SELECTION (IDT C6)

CPU speed	Clock speed	Multiplier	JP1	SW1/1	SW1/2	SW1/3	SW1/4
180MHz	60MHz	3x	Open	On	On	Off	On
200MHz	66MHz	3x	Open	Off	Off	Off	On

CPU SPEED SELECTION (AM K5)

CPU speed	Clock speed	Multiplier	JP1	SW1/1	SW1/2	SW1/3	SW1/4
100MHz	66MHz	1.5x	Open	Off	Off	Off	Off
133MHz	66MHz	1.5x	Open	Off	Off	On	Off
166MHz	66MHz	1.75x	Open	Off	Off	On	On

CPU SPEED SELECTION (AM K6)

CPU speed	Clock speed	Multiplier	JP1	SW1/1	SW1/2	SW1/3	SW1/4
166MHz	66MHz	1.75x	Open	Off	Off	On	On
200MHz	66MHz	3x	Open	Off	Off	Off	On
233MHz	66MHz	3.5x	Open	Off	Off	Off	Off
266MHz	66MHz	4x	Closed	Off	Off	On	Off
300MHz	66MHz	4.5x	Closed	Off	Off	On	On

CPU SPEED SELECTION (INTEL)

CPU speed	Clock speed	Multiplier	JP1	SW1/1	SW1/2	SW1/3	SW1/4
90MHz	60MHz	1.5x	Open	On	On	Off	Off
100MHz	66MHz	1.5x	Open	Off	Off	Off	Off
120MHz	60MHz	2x	Open	On	On	On	Off
133MHz	66MHz	2x	Open	Off	Off	On	Off
150MHz	60MHz	2.5x	Open	On	On	On	On
166MHz	66MHz	2.5x	Open	Off	Off	On	On
200MHz	66MHz	3x	Open	Off	Off	Off	On

CPU SPEED SELECTION (INTEL MMX)

CPU speed	Clock speed	Multiplier	JP1	SW1/1	SW1/2	SW1/3	SW1/4
166MHz	66MHz	2.5x	Open	Off	Off	On	On
200MHz	66MHz	3x	Open	Off	Off	Off	On
233MHz	66MHz	3.5x	Open	Off	Off	Off	Off

CPU VOLTAGE SELECTION (SINGLE)

Voltage	SW2/1	SW2/2	SW2/3	SW2/4
3.5v	On	On	On	On

CPU VOLTAGE SELECTION (DUAL)

Voltage	V core	SW2/1	SW2/2	SW2/3	SW2/4
3.3v	2.0v	Off	Off	Off	Off
3.3v	2.1v	On	Off	Off	Off
3.3v	2.2v	Off	On	Off	Off
3.3v	2.3v	On	On	Off	Off
3.3v	2.4v	Off	Off	On	Off

3.3v	2.5v	On	Off	On	Off
3.3v	2.6v	Off	On	On	Off
3.3v	2.7v	On	On	On	Off
3.3v	2.8v	Off	Off	Off	On
3.3v	2.9v	On	Off	Off	On
3.3v	3.0v	Off	On	Off	On
3.3v	3.2v	Off	Off	On	On
3.3v	3.5v	On	On	On	On

SERIAL PORT 2 SELECTION

Setting	JP3
RS-232	Open
RS-422	Pins 1 & 2, 3 & 4, 5 & 6, 7 & 8, 11 & 12, 15 & 16, 17 & 18, 19 & 20, 23 & 24 closed
RS-485	Pins 1 & 2, 3 & 4, 5 & 6, 7 & 8, 9 & 10, 11 & 12, 13 & 14, 15 & 16, 17 & 18, 19 & 20, 21 & 22, 23 & 24 closed