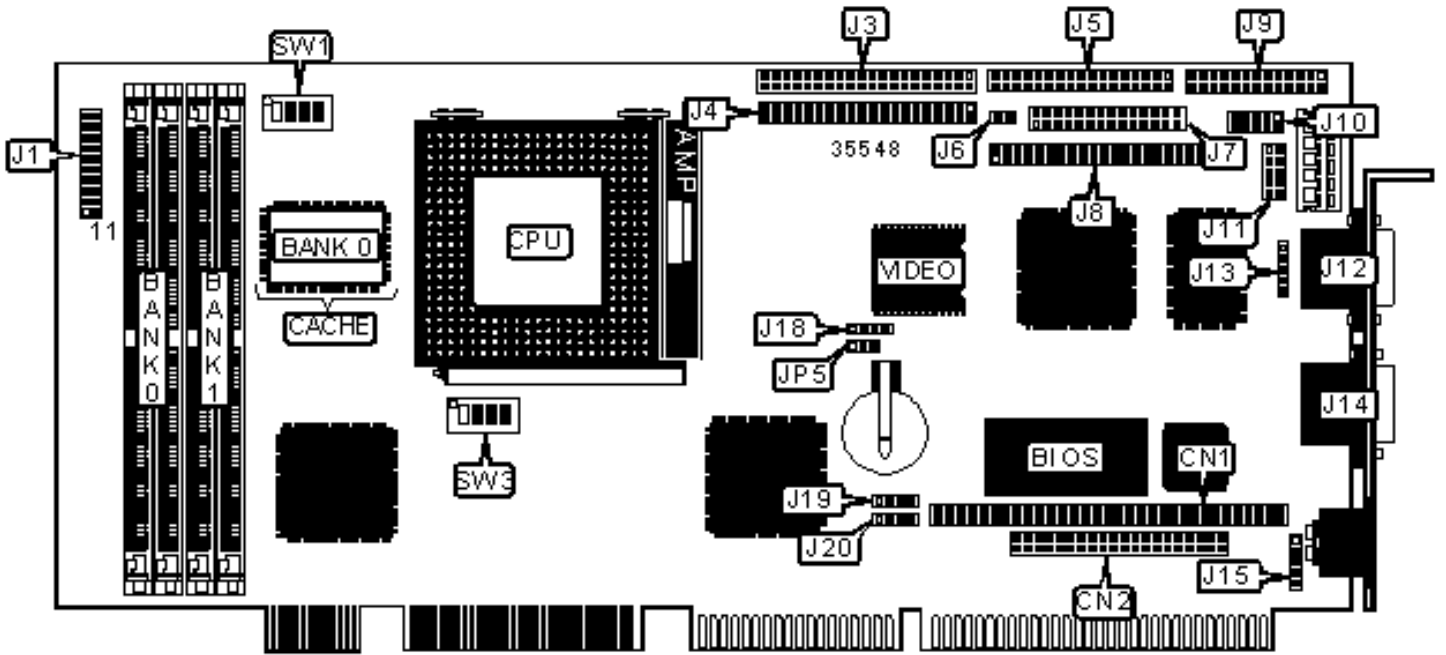


TMC RESEARCH CORPORATION

CI5TTV (VER. 1.1)

Configuration



CONNECTIONS

Purpose	Location	Purpose	Location
PC/104 connector	CN1	LCD panel connector	J8
PC/104 connector	CN2	Parallel port	J9
Speaker	J1/pins 1 – 4	Serial port 2	J10
Green PC connector	J1/pins 6 & 16	PS/2 mouse interface	J11
Turbo LED	J1/pins 8 & 18	Serial port 1	J12
Reset switch	J1/pins 9 & 19	IR connector	J13
IDE interface LED	J1/pins 10 & 20	VGA port	J14
Power LED & keylock	J1/pins 11 - 15	Auxiliary keyboard connector	J15
IDE interface 1	J3	External battery	J18
IDE interface 2	J4	USB connector	J19
Floppy drive interface	J5	USB connector	J20
CPU fan power	J6		

USER CONFIGURABLE SETTINGS

Function	Label	Position
» CMOS memory normal operation	JP5	Pins 1 & 2 closed
CMOS memory clear	JP5	Pins 2 & 3 closed

SIMM CONFIGURATION

Size	Bank 0	Bank 1
8MB	(2) 1M x 36	None
16MB	(2) 2M x 36	None
16MB	(2) 1M x 36	(2) 1M x 36
24MB	(2) 2M x 36	(2) 1M x 36

32MB	(2) 4M x 36	None
32MB	(2) 2M x 36	(2) 2M x 36
40MB	(2) 4M x 36	(2) 1M x 36
48MB	(2) 4M x 36	(2) 2M x 36
64MB	(2) 8M x 36	None
64MB	(2) 4M x 36	(2) 4M x 36
72MB	(2) 8M x 36	(2) 1M x 36
80MB	(2) 8M x 36	(2) 2M x 36
96MB	(2) 8M x 36	(2) 4M x 36
128MB	(2) 8M x 36	(2) 8M x 36
128MB	(2) 16M x 36	None

SIMM CONFIGURATION (CON'T)

Size	Bank 0	Bank 1
136MB	(2) 16M x 36	(2) 1M x 36
144MB	(2) 16M x 36	(2) 2M x 36
160MB	(2) 16M x 36	(2) 4M x 36
192MB	(2) 16M x 36	(2) 8M x 36
256MB	(2) 16M x 36	(2) 16M x 36

Note: Board accepts EDO memory.

CACHE CONFIGURATION

Size	Bank 0
512KB	(1) 64K x 64

VIDEO MEMORY CONFIGURATION

1Mb of video memory is factory installed and is not configurable.

CPU SPEED SELECTION (CX 6X86)

CPU speed	Clock speed	Multiplier	SW3/1	SW3/2	SW3/3	SW3/4
150MHz	60MHz	2x	On	On	On	Off
166MHz	66MHz	2x	Off	Off	On	Off

CPU SPEED SELECTION (CX 6X86L)

CPU speed	Clock speed	Multiplier	SW3/1	SW3/2	SW3/3	SW3/4
150MHz	60MHz	2x	On	On	On	Off
166MHz	66MHz	2x	Off	Off	On	Off

CPU SPEED SELECTION (CX 6X86MX)

CPU speed	Clock speed	Multiplier	SW3/1	SW3/2	SW3/3	SW3/4
166MHz	60MHz	2.5x	On	On	On	On
200MHz	66MHz	2.5x	Off	Off	On	On
233MHz	66MHz	3x	Off	Off	Off	On

CPU SPEED SELECTION (AM K5)

CPU speed	Clock speed	Multiplier	SW3/1	SW3/2	SW3/3	SW3/4
100MHz	66MHz	1.5x	Off	Off	Off	Off
133MHz	66MHz	1.5x	Off	Off	On	Off
166MHz	66MHz	1.75x	Off	Off	On	On

CPU SPEED SELECTION (AM K6)

CPU speed	Clock speed	Multiplier	SW3/1	SW3/2	SW3/3	SW3/4
-----------	-------------	------------	-------	-------	-------	-------

166MHz	66MHz	1.75x	Off	Off	On	On
200MHz	66MHz	3x	Off	Off	Off	On
233MHz	66MHz	3.5x	Off	Off	Off	Off

CPU SPEED SELECTION (INTEL)

CPU speed	Clock speed	Multiplier	SW3/1	SW3/2	SW3/3	SW3/4
90MHz	60MHz	1.5x	On	On	Off	Off
100MHz	66MHz	1.5x	Off	Off	Off	Off
120MHz	60MHz	2x	On	On	On	Off
133MHz	66MHz	2x	Off	Off	On	Off
150MHz	60MHz	2.5x	On	On	On	On
166MHz	66MHz	2.5x	Off	Off	On	On
200MHz	66MHz	3x	Off	Off	Off	On

CPU SPEED SELECTION (INTEL MMX)

CPU speed	Clock speed	Multiplier	SW3/1	SW3/2	SW3/3	SW3/4
166MHz	66MHz	2.5x	Off	Off	On	On
200MHz	66MHz	3x	Off	Off	Off	On
233MHz	66MHz	3.5x	Off	Off	Off	Off

CPU VOLTAGE SELECTION

Voltage	SW1/1	SW1/2	SW1/3	SW1/4
3.5v	On	On	On	On

CPU VOLTAGE SELECTION

Voltage	V core	SW1/1	SW1/2	SW1/3	SW1/4
---------	--------	-------	-------	-------	-------

3.3v	2.0v	Off	Off	Off	Off
3.3v	2.1v	On	Off	Off	Off
3.3v	2.2v	Off	On	Off	Off
3.3v	2.3v	On	On	Off	Off
3.3v	2.4v	Off	Off	On	Off
3.3v	2.5v	On	Off	On	Off
3.3v	2.6v	Off	On	On	Off
3.3v	2.7v	On	On	On	Off
3.3v	2.8v	Off	Off	Off	On
3.3v	2.9v	On	Off	Off	On
3.3v	3.0v	Off	On	Off	On
3.3v	3.2v	Off	Off	On	On
3.3v	3.5v	On	On	On	On

SERIAL PORT 2 SELECTION

Setting	J7
RS-232	Pins 1 & 3, 2 & 4, 7 & 8, 9 & 10, 11 & 12, 13 & 14, 15 & 16, 17 & 18 closed
RS-422	Pins 3 & 5, 4 & 6, 19 & 20, 27 & 28 closed
RS-485	Pins 3 & 5, 4 & 6, 19 & 20, 21 & 22, 23 & 24, 25 & 26 closed