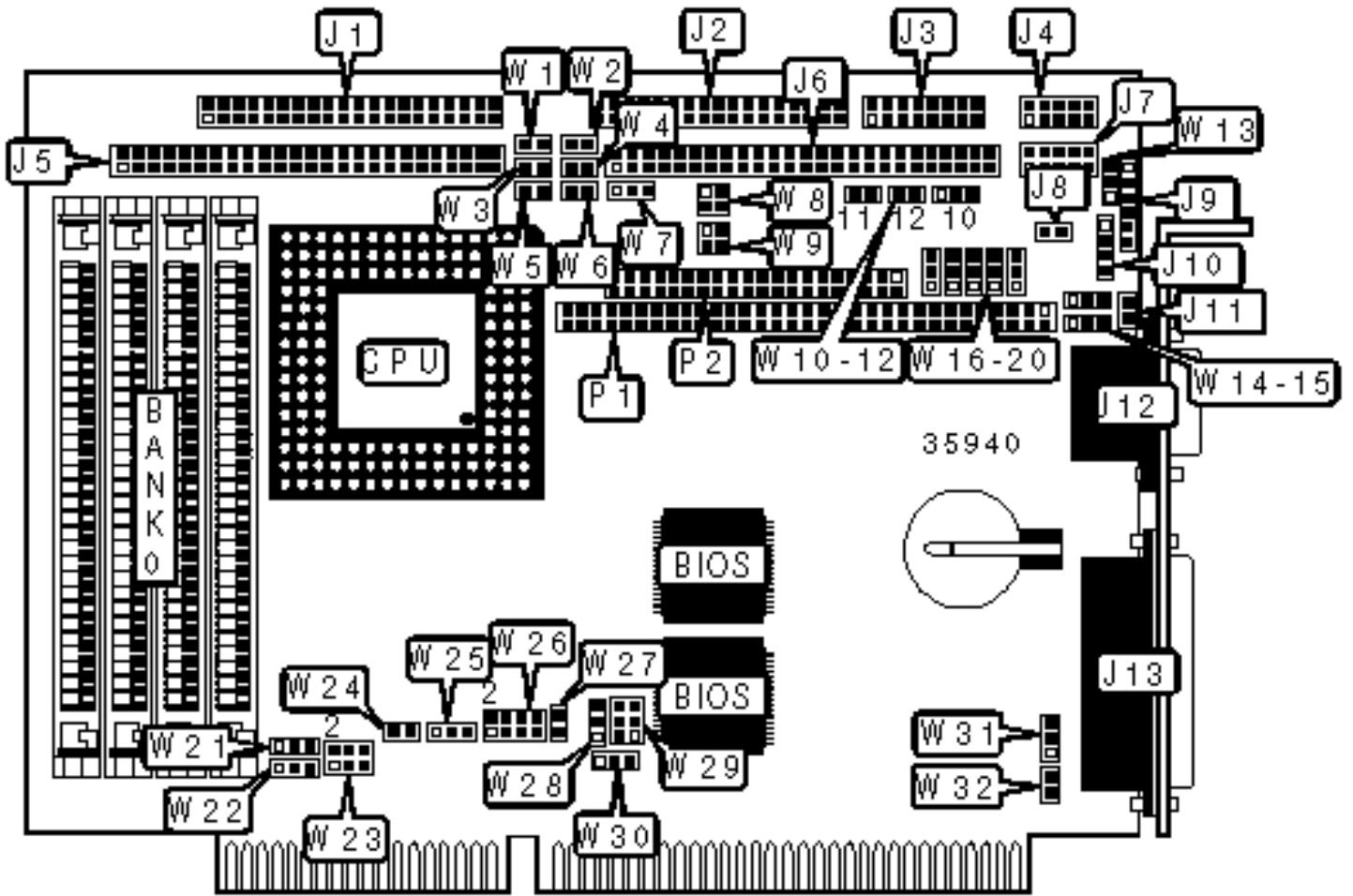


TEKNOR INDUSTRIAL COMPUTERS, INC.

VIPER803

Configuration



## CONNECTIONS

Purpose	Location	Purpose	Location
IDE interface	J1	Chassis fan power	J8
Floppy drive interface	J2	Power connector	J9
Multifunction connector	J3	PS/2 mouse interface	J10
Serial port 2	J4	VGA port	J12
SCSI interface	J5	Parallel port	J13
Flat panel connector	J6	PC/104 connector	P1
Serial port 1	J7	PC/104 connector	P2

## USER CONFIGURABLE SETTINGS

Function	Label	Position
» Normal boot enabled	J11	Open
Emergency boot enabled	J11	Closed
» IOCHRDY signal to IDE interface disabled	W1	Open
IOCHRDY signal to IDE interface enabled	W1	Closed
» Watchdog timer enabled	W2	Closed
Watchdog timer disabled	W2	Open
» Power fail monitoring disabled	W3	Open
Power fail monitoring enabled	W3	Closed
» Flash disk write enabled	W4	Closed
Flash disk write disabled	W4	Open
» SCSI address select 340H	W5	Open
SCSI address select140H	W5	Closed
» Flash BIOS write enabled	W6	Closed
Flash BIOS write disabled	W6	Open

»	Pixel clock polarity positive	W7	Pins 1 & 2 closed
	Pixel clock polarity negative	W7	Pins 2 & 3 closed
»	Battery type select internal	W10	Pins 1 & 2 closed
	Battery type select external	W10	Pins 2 & 3 closed
»	Power failure select external power fail input to pin 6 on J9	W13	Pins 1 & 2 closed
	Power failure select internal/external battery < 3v	W13	Pins 2 & 3 closed
»	On board video enabled	W26/pins 1 & 2	Open
	On board video disabled	W26/pins 1 & 2	Closed
»	Factory configured – do not alter	W26/pins 3 & 4	Unidentified
»	Standard mode enabled	W26/pins 5 & 6	Open
	VT100 mode enabled	W26/pins 5 & 6	Closed
»	Serial normal mode enabled	W26/pins 7 & 8	Open
	Serial download mode enabled	W26/pins 7 & 8	Closed
»	PS/2 mouse disabled	W27	Open
	PS/2 mouse enabled	W27	Closed
»	Monitor type select color	W32	Open
	Monitor type select monochrome	W32	Closed

### SIMM CONFIGURATION

Size	Bank 0
4MB	(4) 1M x 9
16MB	(4) 4M x 9

### CACHE CONFIGURATION

Note: The location of the cache is unidentified.

## VIDEO MEMORY CONFIGURATION

Note: The location of the video memory is unidentified.

## CPU SPEED SELECTION

Speed	W29
50iMHz	Pins 1 & 2, 3 & 4, 5 & 6 closed
66iMHz	Pins 3 & 4, 5 & 6 closed
75iMHz	Pins 1 & 2, 3 & 4, 5 & 6 closed
100iMHz	Pins 3 & 4, 5 & 6 closed

## CPU TYPE SELECTION

Type	W22	W24	W25
80486SX	Pins 1 & 2 closed	Open	Open
80486DX	Pins 2 & 3 closed	Closed	Pins 1 & 2 closed
80486DX2	Pins 2 & 3 closed	Closed	Pins 1 & 2 closed
80486DX4	Pins 2 & 3 closed	Closed	Pins 1 & 2 closed
ODP486	Pins 2 & 3 closed	Closed	Pins 1 & 2 closed

## BUSCLK SIGNAL SELECTION

Speed	W21
16MHz	Pins 2 & 3 closed
25MHz	Pins 1 & 2 closed
33MHz	Open

## DMA CHANNEL SELECTION

Channel	W28	W31
---------	-----	-----

»	None	Open	Open
	1	Pins 1 & 2 closed	Pins 1 & 2 closed
	3	Pins 2 & 3 closed	Pins 2 & 3 closed

<b>PARALLEL PORT INTERRUPT SELECTION</b>			
IRQ		W30	
	5	Pins 1 & 2 closed	
»	7	Pins 2 & 3 closed	
	None	Open	

<b>SERIAL PORT 2 SELECTION</b>					
Setting		W17	W18	W19	W20
»	RS-232	Pins 1 & 2 closed	Pins 1 & 2 closed	Pins 1 & 2 closed	Pins 1 & 2 closed
	RS-422	Pins 2 & 3 closed	Pins 2 & 3 closed	Pins 2 & 3 closed	Pins 2 & 3 closed
	RS-485	Pins 2 & 3 closed	Pins 2 & 3 closed	Pins 2 & 3 closed	Pins 2 & 3 closed

<b>SERIAL PORT LOOPBACK SELECTION</b>			
Setting		W11	W12
»	Normal	Open	Open
	Loopback	Closed	Closed

<b>I/O ADDRESS SELECTION</b>			
Address		W23	
»	190H	Pins 1 & 2, 3 & 4 closed	
	290H	Pins 1 & 2 closed	
	390H	Pins 3 & 4 closed	

	390H	Open
--	------	------

SCSI DMA CHANNEL SELECTION		
Channel	W14	W15
» None	Open	Open
0	Pins 1 & 2 closed	Pins 2 & 3 closed
5	Pins 2 & 3 closed	Pins 1 & 2 closed

SCSI INTERRUPT SELECTION	
IRQ	W16
10	Pins 1 & 2 closed
11	Pins 2 & 3 closed
» None	Open

EDOUT SELECTION	
Setting	W8
EDOUT left to software	Open
EDOUT to pin 29 & ground to pin 17	Pins 1 & 3, 2 & 4 closed
EDOUT to pin 17 & ground to pin 29	Pins 1 & 2, 3 & 4 closed

Note: The above listed pins are located on J2.

HDOUT SELECTION	
Setting	W9
HDOUT left to software	Open
HDOUT to pin 33 & ground to pin 27	Pins 1 & 3, 2 & 4 closed
HDOUT to pin 27 & ground to pin 33	Pins 1 & 2, 3 & 4 closed

Note: The above listed pins are located on J2.