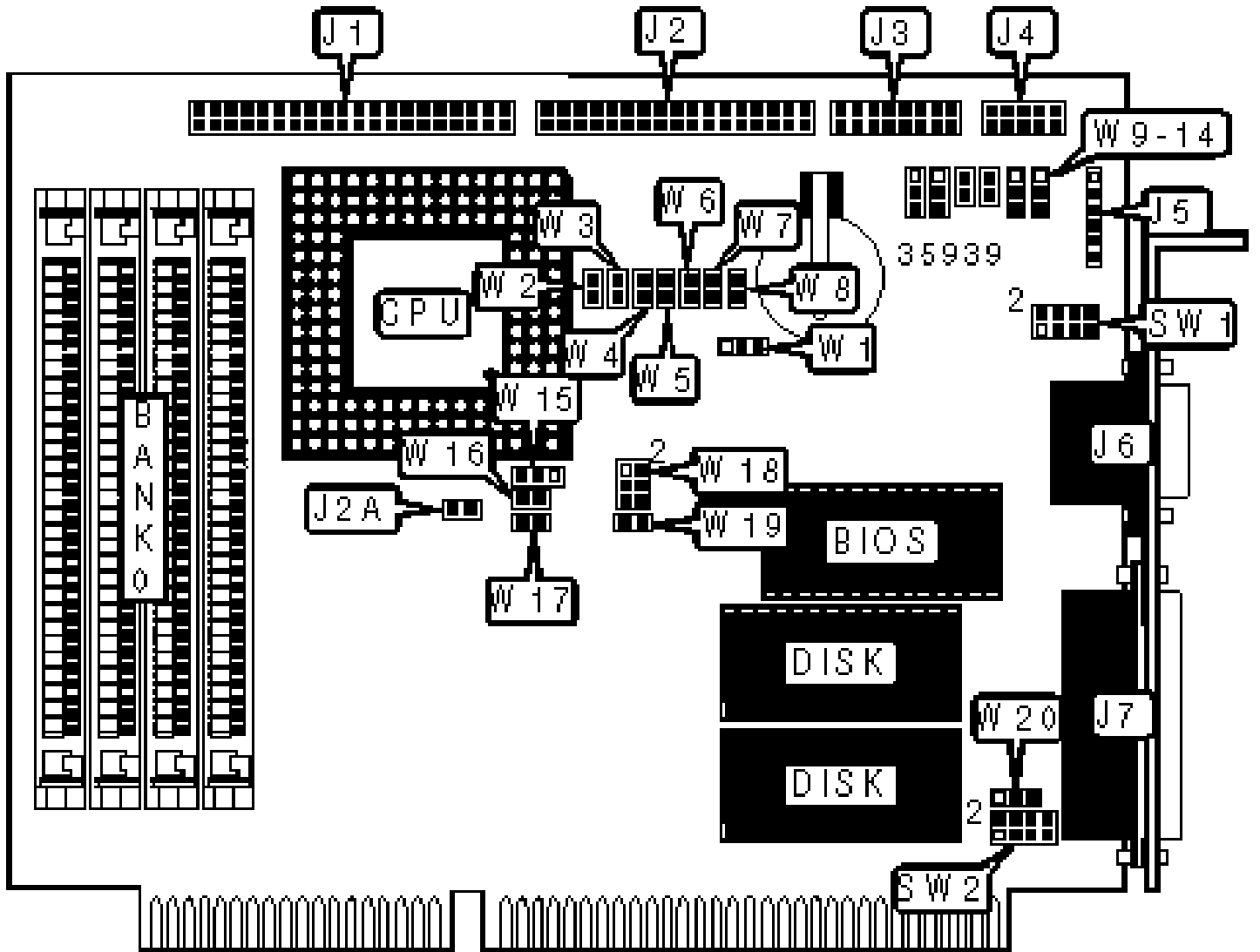


TEKNOR INDUSTRIAL COMPUTERS, INC.

TEK-AT4

Configuration



## CONNECTIONS

Purpose	Location	Purpose	Location
IDE interface	J1	Serial port 2	J4
Floppy drive interface	J2	Power connector	J5
Chassis fan power	J2A	Serial port 1	J6
Multifunction connector	J3	Parallel port	J7

## USER CONFIGURABLE SETTINGS

Function	Label	Position
» Factory configured - do not alter	SW1	Unidentified
» Boot from flash	SW2/pins 1 & 2	Closed
» Boot from drive	SW2/pins 1 & 2	Open
» Serial port select for VT100 download COM2	SW2/pins 3 & 4	Closed
» Serial port select for VT100 download COM1	SW2/pins 3 & 4	Open
» Display mode select VT100	SW2/pins 5 & 6	Closed
» Display mode select standard	SW2/pins 5 & 6	Open
» Download mode select remote	SW2/pins 7 & 8	Closed
» Download mode select normal	SW2/pins 7 & 8	Open
» Power detection select power failure	W1	Pins 1 & 2 closed
» Power detection select low battery	W1	Pins 2 & 3 closed
» SRAM battery backup select no battery	W2	Open
» SRAM battery backup select vbatt	W2	Closed
» IDE interface enabled	W3	Open
» IDE interface disabled	W3	Closed
» Watchdog timer enabled	W4	Closed
» Watchdog timer disabled	W4	Open

»	Power monitoring disabled	W5	Open
	Power monitoring enabled	W5	Closed
»	Flash BIOS installed	W6	Closed
	Flash BIOS not installed	W6	Open
»	BIOS type select EPROM	W7	Open
	BIOS type select flash	W7	Closed
»	Teknor BIOS extension enabled	W8	Open
	Teknor BIOS extension disabled	W8	Closed
»	Monitor type select monochrome/EGA/VGA	W19	Open
	Monitor type select CGA	W19	Closed

### SIMM CONFIGURATION

Size	Bank 0
1MB	(4) 256K x 9
2MB	(4) 512K x 9
4MB	(4) 1M x 9
16MB	(4) 4M x 9

### CACHE CONFIGURATION

Note: The location of the cache is unidentified.

### CACHE JUMPER CONFIGURATION

Size	W20
32K x 8, 128K x 8	Pins 1 & 2 closed
256K x 8, 512K x 8	Pins 2 & 3 closed

### CPU SPEED SELECTION

Speed	W18/pins 1 & 2	W18/pins 3 & 4	W18/pins 5 & 6
25MHz	Open	Closed	Closed
33MHz	Closed	Closed	Closed
50iMHz	Open	Closed	Closed
50MHz	Closed	Closed	Closed
66iMHz	Closed	Closed	Closed
75iMHz	Open	Closed	Closed
100iMHz	Closed	Closed	Closed

### CPU TYPE SELECTION

Type	W15	W16	W17
80486SX	Pins 1 & 2 closed	Open	Open
80486DX	Pins 2 & 3 closed	Pins 1 & 2 closed	Closed
80486DX2	Pins 2 & 3 closed	Pins 1 & 2 closed	Closed
80486DX4	Pins 2 & 3 closed	Pins 1 & 2 closed	Closed

### BUSCLK SIGNAL SELECTION

Speed	W14A
16MHz	Pins 2 & 3 closed
25MHz	Pins 1 & 2 closed
33MHz	Open

Note: The location of the above jumper is unidentified.

### SERIAL PORT 2 SELECTION

Setting	W9	W10	W11	W12	W13	W14
---------	----	-----	-----	-----	-----	-----

»	RS-232	1 & 2	1 & 2	Open	Open	1 & 2	1 & 2
	RS-485	2 & 3	2 & 3	Closed	Closed	2 & 3	2 & 3

Note: Pins designated should be in the closed position.