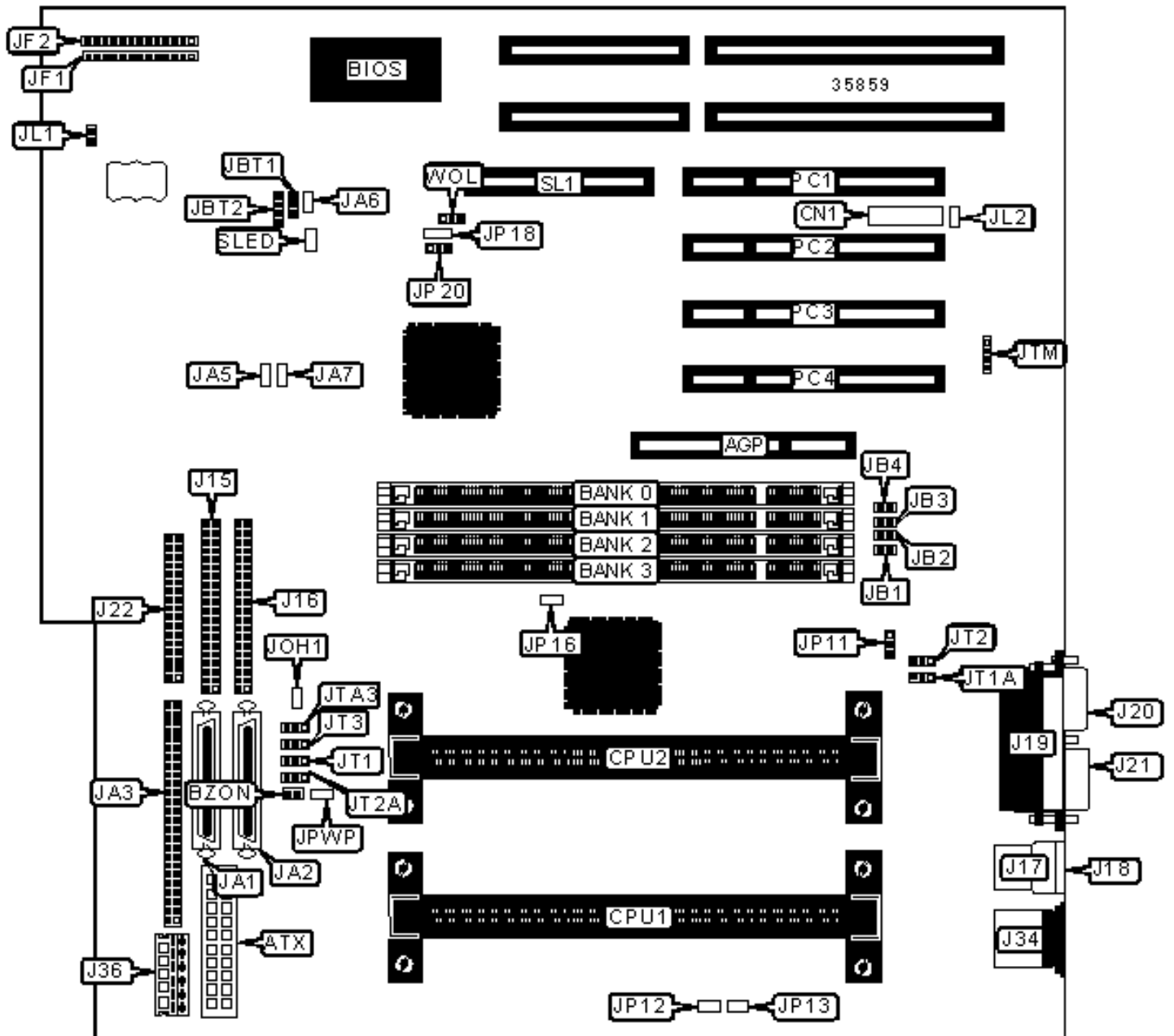


SUPER MICRO

S2DGR

Configuration



CONNECTIONS

Purpose	Location	Purpose	Location
AGP slot	AGP	Power LED & keylock	JF1/pins 5 – 9
ATX power connector	ATX	Speaker	JF1/pins 10 - 13
SB-link connector	CN1	IR connector	JF2/pins 1 – 8
IDE interface 2	J15	Soft off power supply	JF2/pins 9 & 10
IDE interface 1	J16	Reset switch	JF2/pins 12 & 13
USB connector 1	J17	Chassis intrusion connector	JL1
USB connector 2	J18	Overheat LED	JOH1
Parallel port	J19	Thermal input connector	JTM
Serial port 1	J20	Chassis fan power	JT1
Serial port 2	J21	Chassis fan power	JT1A
Floppy drive interface	J22	Chassis fan power	JT2
PS/2 mouse port	J34	Chassis fan power	JT2A
5v auxiliary power	J36	Chassis fan power	JT3
Ultra Wide SCSI interface	JA1	Chassis fan power	JT3A
Ultra Wide SCSI interface	JA2	32-bit PCI slots	PC1 – PC4
Ultra SCSI interface	JA3	RAID slot	SL1
External battery	JBT2	SCSI interface LED	SLED
IDE interface LED	JF1/pins 1 – 4	Wake on LAN connector	WOL

USER CONFIGURABLE SETTINGS

Function	Label	Position
Overheat buzzer disabled	BZON	Open
Overheat buzzer enabled	BZON	Closed
» Factory configured - do not alter	JA7	Unidentified

»	CMOS memory normal operation	JBT1	Pins 1 & 2 closed
	CMOS memory clear	JBT1	Pins 2 & 3 closed
»	Factory configured - do not alter	JL2	Unidentified
»	Factory configured - do not alter	JP12	Unidentified
»	Factory configured - do not alter	JP13	Unidentified
»	Factory configured - do not alter	JP16	Unidentified
»	Factory configured - do not alter	JP18	Unidentified
»	BIOS CTL PD state	JP20	Pins 2 & 3 closed
	PIIX CTL PD state	JP20	Pins 1 & 2 closed

DIMM CONFIGURATION

Size	Bank 0	Bank 1	Bank 2	Bank 3
8MB	(1) 1M x 64	None	None	None
16MB	(1) 2M x 64	None	None	None
16MB	(1) 1M x 64	(1) 1M x 64	None	None
24MB	(1) 2M x 64	(1) 1M x 64	None	None
24MB	(1) 1M x 64	(1) 1M x 64	(1) 1M x 64	None
32MB	(1) 4M x 64	None	None	None
32MB	(1) 2M x 64	(1) 2M x 64	None	None
32MB	(1) 1M x 64	(1) 1M x 64	(1) 1M x 64	(1) 1M x 64
40MB	(1) 4M x 64	(1) 1M x 64	None	None
48MB	(1) 4M x 64	(1) 2M x 64	None	None
48MB	(1) 2M x 64	(1) 2M x 64	(1) 2M x 64	None
64MB	(1) 2M x 64	(1) 2M x 64	(1) 2M x 64	(1) 2M x 64
64MB	(1) 8M x 64	None	None	None
64MB	(1) 4M x 64	(1) 4M x 64	None	None

72MB	(1) 8M x 64	(1) 1M x 64	None	None
80MB	(1) 8M x 64	(1) 2M x 64	None	None
96MB	(1) 8M x 64	(1) 4M x 64	None	None
96MB	(1) 4M x 64	(1) 4M x 64	(1) 4M x 64	None
128MB	(1) 16M x 64	None	None	None
128MB	(1) 8M x 64	(1) 8M x 64	None	None
128MB	(1) 4M x 64	(1) 4M x 64	(1) 4M x 64	(1) 4M x 64
136MB	(1) 16M x 64	(1) 1M x 64	None	None
144MB	(1) 16M x 64	(1) 2M x 64	None	None
176MB	(1) 16M x 64	(1) 2M x 64	(1) 2M x 64	(1) 2M x 64
192MB	(1) 16M x 64	(1) 8M x 64	None	None
192MB	(1) 8M x 64	(1) 8M x 64	(1) 8M x 64	None
256MB	(1) 32M x 64	None	None	None
256MB	(1) 16M x 64	(1) 16M x 64	None	None
256MB	(1) 8M x 64	(1) 8M x 64	(1) 8M x 64	(1) 8M x 64
272MB	(1) 16M x 64	(1) 16M x 64	(1) 1M x 64	(1) 1M x 64
280MB	(1) 32M x 64	(1) 1M x 64	(1) 1M x 64	(1) 1M x 64
288MB	(1) 16M x 64	(1) 16M x 64	(1) 2M x 64	(1) 2M x 64
320MB	(1) 16M x 64	(1) 16M x 64	(1) 4M x 64	(1) 4M x 64
384MB	(1) 16M x 64	(1) 16M x 64	(1) 16M x 64	None

DIMM CONFIGURATION (CON'T)

Size	Bank 0	Bank 1	Bank 2	Bank 3
448MB	(1) 32M x 64	(1) 8M x 64	(1) 8M x 64	(1) 8M x 64
512MB	(1) 64M x 64	None	None	None
512MB	(1) 32M x 64	(1) 32M x 64	None	None

512MB	(1) 16M x 64	(1) 16M x 64	(1) 16M x 64	(1) 16M x 64
640MB	(1) 32M x 64	(1) 16M x 64	(1) 16M x 64	(1) 16M x 64
768MB	(1) 32M x 64	(1) 32M x 64	(1) 32M x 64	None
1024MB	(1) 64M x 64	(1) 64M x 64	None	None
1024MB	(1) 32M x 64	(1) 32M x 64	(1) 32M x 64	(1) 32M x 64
1536MB	(1) 64M x 64	(1) 64M x 64	(1) 64M x 64	None
2048MB	(1) 64M x 64	(1) 64M x 64	(1) 64M x 64	(1) 64M x 64

Note: Board accepts SDRAM memory.

CACHE CONFIGURATION

Note: 1024KB cache is located on the Pentium II CPU.

CPU SPEED SELECTION

CPU speed	Clock speed	Multiplier	JB1	JB2	JB3	JB4	JP11
400MHz	100MHz	4x	Closed	Closed	Open	Closed	Open
450MHz	100MHz	4.5x	Open	Closed	Open	Closed	Open

Note: Pins designated should be in the closed position.

SCSI TERMINATION SELECTION

Setting		JA5	JA6
»	Enabled	Closed	Closed
	Disabled	Open	Open

Note: JA5 is for JA1 & JA3. JA6 is for JA2.