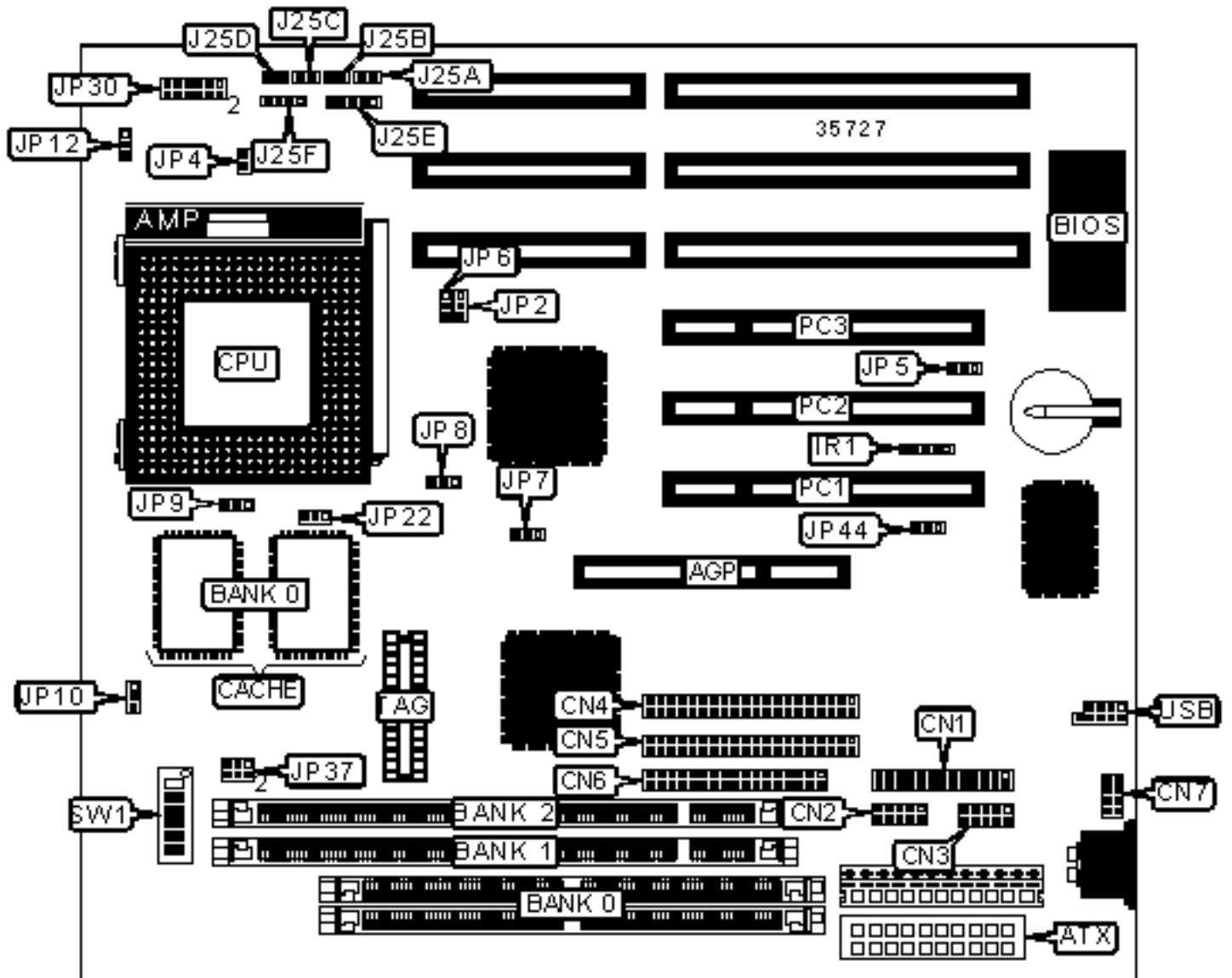


SOYO COMPUTER CO., LTD.

SY-5EHM

Configuration



CONNECTIONS

| Purpose | Location | Purpose | Location |
|------------------------|----------|-----------------------|-----------|
| AGP slot | AGP | Reset switch | J25A |
| ATX power connector | ATX | Soft off power supply | J25B |
| Parallel port | CN1 | Turbo LED | J25C |
| Serial port 1 | CN2 | IDE interface LED | J25D |
| Serial port 2 | CN3 | Power LED & keylock | J25E |
| IDE interface 1 | CN4 | Speaker | J25F |
| IDE interface 2 | CN5 | CPU fan power | JP12 |
| Floppy drive interface | CN6 | Wake on LAN connector | JP44 |
| PS/2 mouse interface | CN7 | 32-bit PCI slots | PC1 – PC3 |
| IR connector | IR1 | USB connector | USB |

USER CONFIGURABLE SETTINGS

| Function | Label | Position |
|----------------------------------|-------|-------------------|
| CPU voltage select auto | JP4 | Closed |
| CPU voltage select manual | JP4 | Open |
| » CMOS memory normal operation | JP5 | Pins 1 & 2 closed |
| CMOS memory clear | JP5 | Pins 2 & 3 closed |
| CPU burst mode select interleave | JP22 | Pins 1 & 2 closed |
| CPU burst mode select linear | JP22 | Pins 2 & 3 closed |

SIMM CONFIGURATION

| Size | Bank 0 |
|------|-------------|
| 8MB | (2) 1M x 36 |
| 16MB | (2) 2M x 36 |

| | |
|---------------------------------|-------------|
| 32MB | (2) 4M x 36 |
| 64MB | (2) 8M x 36 |
| Note: Board accepts EDO memory. | |

| DIMM CONFIGURATION | | |
|---------------------------|-------------|-------------|
| Size | Bank 1 | Bank 2 |
| 8MB | (1) 1M x 64 | None |
| 16MB | (1) 2M x 64 | None |
| 16MB | (1) 1M x 64 | (1) 1M x 64 |
| 24MB | (1) 2M x 64 | (1) 1M x 64 |
| 32MB | (1) 4M x 64 | None |

| DIMM CONFIGURATION (CON'T) | | |
|-----------------------------------|--------------|-------------|
| Size | Bank 1 | Bank 2 |
| 32MB | (1) 2M x 64 | (1) 2M x 64 |
| 40MB | (1) 4M x 64 | (1) 1M x 64 |
| 48MB | (1) 4M x 64 | (1) 2M x 64 |
| 64MB | (1) 8M x 64 | None |
| 64MB | (1) 4M x 64 | (1) 4M x 64 |
| 72MB | (1) 8M x 64 | (1) 1M x 64 |
| 80MB | (1) 8M x 64 | (1) 2M x 64 |
| 96MB | (1) 8M x 64 | (1) 4M x 64 |
| 128MB | (1) 16M x 64 | None |
| 128MB | (1) 8M x 64 | (1) 8M x 64 |
| 136MB | (1) 16M x 64 | (1) 1M x 64 |
| 144MB | (1) 16M x 64 | (1) 2M x 64 |

| | | |
|---|--------------|--------------|
| 160MB | (1) 16M x 64 | (1) 4M x 64 |
| 192MB | (1) 16M x 64 | (1) 8M x 64 |
| 256MB | (1) 16M x 64 | (1) 16M x 64 |
| Note: Board accepts EDO & SDRAM memory. | | |

| DIMM VOLTAGE CONFIGURATION | | |
|-----------------------------------|------|--------------------------|
| Voltage | | JP37 |
| » | 3.3v | Pins 1 & 3, 2 & 4 closed |
| | 5v | Pins 3 & 5, 4 & 6 closed |

| DIMM FREQUENCY CONFIGURATION | | | |
|-------------------------------------|-------------|-------------------|-------------------|
| Frequency | | JP9 | JP10 |
| » | SDRAM = CPU | Pins 2 & 3 closed | Pins 1 & 2 closed |
| | SDRAM = AGP | Pins 1 & 2 closed | Pins 2 & 3 closed |

| CACHE CONFIGURATION | | |
|----------------------------|--------------|-------------|
| Size | Bank 0 | TAG |
| 512KB | (1) 64K x 64 | (1) 16K x 8 |
| 1MB | (2) 64K x 64 | (1) 16K x 8 |

| CPU SPEED SELECTION (CX 6X86) | | | | | | | | |
|--------------------------------------|-------------|------------|-------|-------|-------|-------|-------|-------|
| CPU speed | Clock speed | Multiplier | SW1/1 | SW1/2 | SW1/3 | SW1/4 | SW1/5 | SW1/6 |
| 150MHz | 60MHz | 2x | On | Off | Off | On | Off | Off |
| 166MHz | 66MHz | 2x | On | Off | Off | Off | Off | Off |
| 200MHz | 75MHz | 2x | On | Off | Off | Off | On | Off |

CPU SPEED SELECTION (CX 6X86L)

| CPU speed | Clock speed | Multiplier | SW1/1 | SW1/2 | SW1/3 | SW1/4 | SW1/5 | SW1/6 |
|-----------|-------------|------------|-------|-------|-------|-------|-------|-------|
| 150MHz | 60MHz | 2x | On | Off | Off | On | Off | Off |
| 166MHz | 66MHz | 2x | On | Off | Off | Off | Off | Off |
| 200MHz | 75MHz | 2x | On | Off | Off | Off | On | Off |

CPU SPEED SELECTION (CX 6X86MX)

| CPU speed | Clock speed | Multiplier | SW1/1 | SW1/2 | SW1/3 | SW1/4 | SW1/5 | SW1/6 |
|-----------|-------------|------------|-------|-------|-------|-------|-------|-------|
| 166MHz | 60MHz | 2.5x | On | On | Off | On | Off | Off |
| 200MHz | 66MHz | 2.5x | On | On | Off | On | Off | Off |
| 200MHz | 75MHz | 2x | On | Off | Off | Off | On | Off |
| 233MHz | 75MHz | 2.5x | On | On | Off | Off | On | Off |
| 233MHz | 66MHz | 3x | Off | On | Off | On | Off | Off |
| 266MHz | 83MHz | 2.5x | On | On | Off | On | On | Off |

CPU SPEED SELECTION (AM K5)

| CPU speed | Clock speed | Multiplier | SW1/1 | SW1/2 | SW1/3 | SW1/4 | SW1/5 | SW1/6 |
|-----------|-------------|------------|-------|-------|-------|-------|-------|-------|
| 90MHz | 60MHz | 1.5x | Off | Off | Off | On | Off | Off |
| 100MHz | 66MHz | 1.5x | Off | Off | Off | Off | Off | Off |
| 120MHz | 60MHz | 1.5x | Off | Off | Off | On | Off | Off |
| 133MHz | 66MHz | 2x | On | Off | Off | Off | Off | Off |
| 166MHz | 66MHz | 2.5x | On | On | Off | Off | Off | Off |

CPU SPEED SELECTION (AM K6)

| CPU speed | Clock speed | Multiplier | SW1/1 | SW1/2 | SW1/3 | SW1/4 | SW1/5 | SW1/6 |
|-----------|-------------|------------|-------|-------|-------|-------|-------|-------|
| 166MHz | 66MHz | 2.5x | On | On | Off | Off | Off | Off |

| | | | | | | | | |
|--------|-------|------|-----|-----|-----|-----|-----|-----|
| 180MHz | 66MHz | 3x | Off | On | Off | On | Off | Off |
| 200MHz | 66MHz | 3x | Off | On | Off | Off | Off | Off |
| 233MHz | 66MHz | 3.5x | Off | Off | Off | Off | Off | Off |

CPU SPEED SELECTION (AM K6 2)

| CPU speed | Clock speed | Multiplier | SW1/1 | SW1/2 | SW1/3 | SW1/4 | SW1/5 | SW1/6 |
|-----------|-------------|------------|-------|-------|-------|-------|-------|-------|
| 250MHz | 100MHz | 2.5x | On | On | Off | Off | Off | On |

CPU SPEED SELECTION (INTEL)

| CPU speed | Clock speed | Multiplier | SW1/1 | SW1/2 | SW1/3 | SW1/4 | SW1/5 | SW1/6 |
|-----------|-------------|------------|-------|-------|-------|-------|-------|-------|
| 90MHz | 60MHz | 1.5x | Off | Off | Off | On | Off | Off |
| 100MHz | 66MHz | 1.5x | Off | Off | Off | Off | Off | Off |
| 120MHz | 60MHz | 2x | On | Off | Off | On | Off | Off |
| 133MHz | 66MHz | 2x | On | Off | Off | Off | Off | Off |
| 150MHz | 60MHz | 2.5x | On | On | Off | On | Off | Off |
| 166MHz | 66MHz | 2.5x | On | On | Off | Off | Off | Off |
| 180MHz | 66MHz | 3x | Off | On | Off | On | Off | Off |
| 200MHz | 66MHz | 3x | Off | On | Off | Off | Off | Off |

CPU SPEED SELECTION (INTEL MMX)

| CPU speed | Clock speed | Multiplier | SW1/1 | SW1/2 | SW1/3 | SW1/4 | SW1/5 | SW1/6 |
|-----------|-------------|------------|-------|-------|-------|-------|-------|-------|
| 166MHz | 66MHz | 2.5x | On | On | Off | Off | Off | Off |
| 180MHz | 66MHz | 3x | Off | On | Off | On | Off | Off |
| 200MHz | 66MHz | 3x | Off | On | Off | Off | Off | Off |
| 233MHz | 66MHz | 3.5x | Off | Off | Off | Off | Off | Off |

CPU VOLTAGE SELECTION

| Voltage | JP30 |
|---------|---------------------------------|
| 2.0v | Open |
| 2.1v | Pins 5 & 6 closed |
| 2.2v | Pins 3 & 4 closed |
| 2.3v | Pins 3 & 4, 5 & 6 closed |
| 2.4v | Pins 7 & 8 closed |
| 2.5v | Pins 5 & 6, 7 & 8 closed |
| 2.6v | Pins 3 & 4, 7 & 8 closed |
| 2.7v | Pins 3 & 4, 5 & 6, 7 & 8 closed |
| 2.8v | Pins 1 & 2, 11 & 12 closed |
| 2.9v | Pins 1 & 2, 5 & 6 closed |
| 3.0v | Pins 1 & 2, 3 & 4 closed |
| 3.1v | Pins 1 & 2, 3 & 4, 5 & 6 closed |
| 3.2v | Pins 1 & 2, 7 & 8 closed |
| 3.3v | Pins 1 & 2, 9 & 10 closed |
| 3.4v | Pins 1 & 2, 3 & 4, 7 & 8 closed |
| 3.5v | Pins 1 & 2, 11 & 12 closed |

POWER SUPPLY SELECTION

| Type | JP2 | JP6 |
|------|-------------------|-------------------|
| » AT | Pins 2 & 3 closed | Pins 2 & 3 closed |
| ATX | Pins 1 & 2 closed | Pins 1 & 2 closed |

HOST BUS FREQUENCY SELECTION

| CPU host bus | AGP host bus | PCI hose bus | JP7 | JP8 |
|--------------|--------------|--------------|-----|-----|
|--------------|--------------|--------------|-----|-----|

| | | | | | |
|---|--------|-------|-------|-------------------|-------------------|
| » | 66MHz | 66MHz | 33MHz | Pins 2 & 3 closed | Open |
| | 100MHz | 66MHz | 33MHz | Pins 1 & 2 closed | Pins 2 & 3 closed |