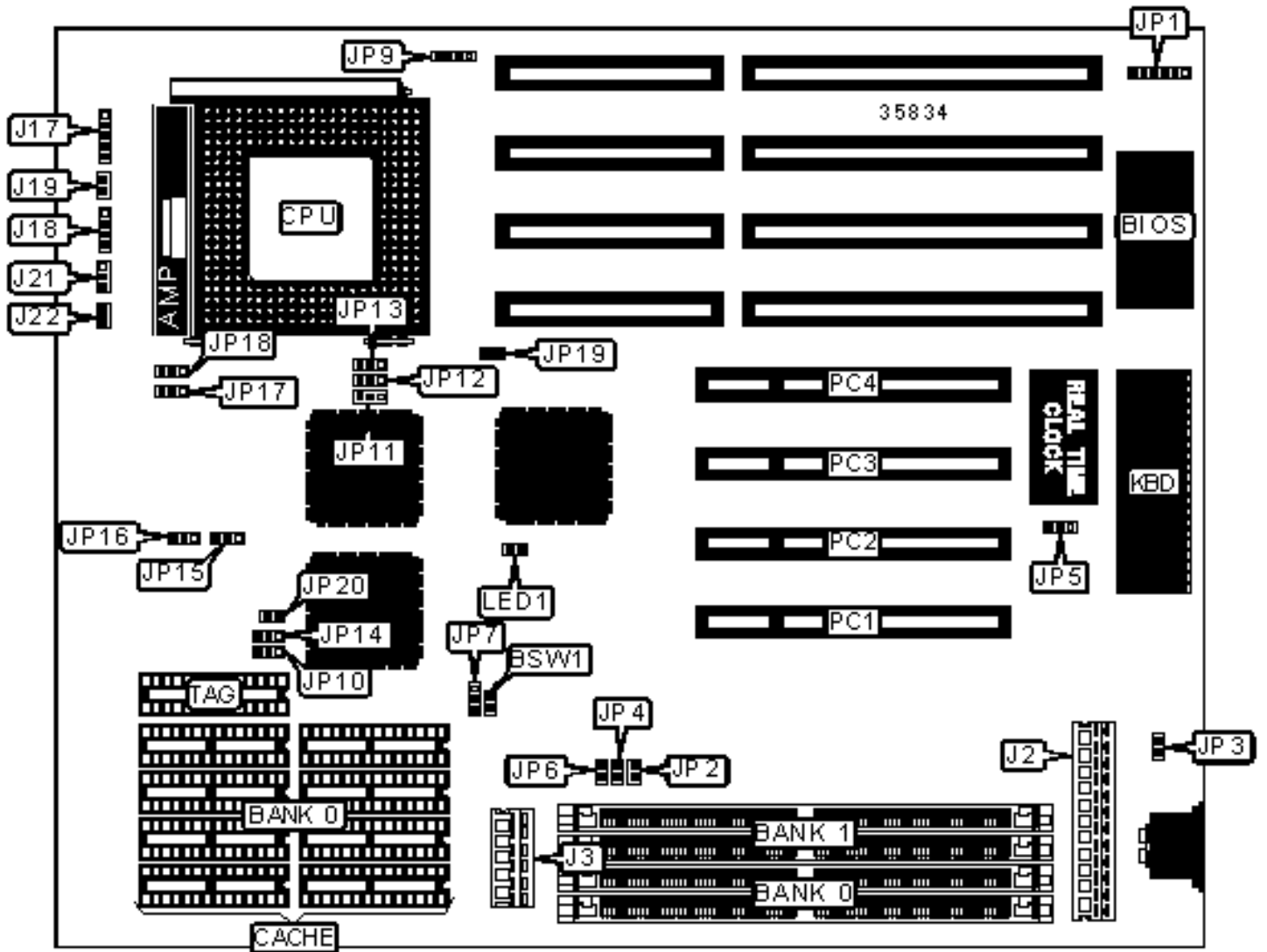


SOYO COMPUTER CO., LTD.

SY-032 A2/A5/A1M

Configuration



CONNECTIONS

Purpose	Location	Purpose	Location
Green PC connector	BSW1	Reset switch	J19
5v power	J2	Turbo switch	J21
3.3v power	J3	Turbo LED	J22
Power LED & keylock	J17	Chassis fan power	JP9
Speaker	J18	32-bit PCI slots	PC1 – PC4

USER CONFIGURABLE SETTINGS

Function	Label	Position
» BIOS type select EPROM	JP1	Pins 2 & 3, 4 & 5 closed
BIOS type select flash	JP1	Pins 1 & 2, 5 & 6 closed
» Monitor type select color	JP3	Closed
Monitor type select monochrome	JP3	Open
» Factory configured - do not alter	JP5	Unidentified
» Factory configured - do not alter	JP7	Pins 2 & 3 closed
» External fan controlled by JP18	JP8	Pins 1 & 2 closed
External fan always enabled	JP8	Pins 2 & 3 closed
» Factory configured - do not alter	JP11	Pins 1 & 2 closed
» Factory configured - do not alter	JP12	Pins 2 & 3 closed
» Factory configured - do not alter	JP13	Pins 1 & 2 closed
» Clock generator select stopped by STPCLK	JP17	Pins 1 & 2 closed
Clock generator select stopped by SMOUT	JP17	Pins 2 & 3 closed
» Fan control select stopped by STPCLK	JP18	Pins 1 & 2 closed
Fan control select stopped by SMOUT	JP18	Pins 2 & 3 closed
» Factory configured - do not alter	JP19	Unidentified

»	Factory configured - do not alter	LED1	Unidentified
Note: The location of JP8 is unidentified.			

SIMM CONFIGURATION		
Size	Bank 0	Bank 1
2MB	(2) 256K x 36	None
4MB	(2) 512K x 36	None
4MB	(2) 256K x 36	(2) 256K x 36
8MB	(2) 1M x 36	None
8MB	(2) 512K x 36	(2) 512K x 36
12MB	(2) 512K x 36	(2) 1M x 36
16MB	(2) 2M x 36	None
16MB	(2) 1M x 36	(2) 1M x 36
20MB	(2) 512K x 36	(2) 2M x 36
24MB	(2) 1M x 36	(2) 2M x 36
32MB	(2) 4M x 36	None
32MB	(2) 2M x 36	(2) 2M x 36
36MB	(2) 512K x 36	(2) 4M x 36
40MB	(2) 1M x 36	(2) 4M x 36
48MB	(2) 2M x 36	(2) 4M x 36
64MB	(2) 8M x 36	None
64MB	(2) 4M x 36	(2) 4M x 36
72MB	(2) 1M x 36	(2) 8M x 36
80MB	(2) 2M x 36	(2) 8M x 36
96MB	(2) 4M x 36	(2) 8M x 36
128MB	(2) 8M x 36	(2) 8M x 36

128MB	(2) 16M x 36	None
-------	--------------	------

SIMM JUMPER CONFIGURATION		
Size	JP15	JP16
2MB	Pins 1 & 2 closed	Pins 1 & 2 closed
4MB	Pins 1 & 2 closed	Pins 1 & 2 closed
4MB	Pins 2 & 3 closed	Pins 2 & 3 closed
8MB	Pins 2 & 3 closed	Pins 2 & 3 closed
8MB	Pins 1 & 2 closed	Pins 1 & 2 closed
12MB	Pins 1 & 2 closed	Pins 1 & 2 closed
16MB	Pins 1 & 2 closed	Pins 1 & 2 closed
16MB	Pins 2 & 3 closed	Pins 2 & 3 closed
20MB	Pins 2 & 3 closed	Pins 2 & 3 closed
24MB	Pins 1 & 2 closed	Pins 1 & 2 closed
32MB	Pins 2 & 3 closed	Pins 2 & 3 closed
32MB	Pins 1 & 2 closed	Pins 1 & 2 closed
36MB	Pins 2 & 3 closed	Pins 2 & 3 closed
40MB	Pins 1 & 2 closed	Pins 1 & 2 closed
48MB	Pins 2 & 3 closed	Pins 2 & 3 closed
64MB	Pins 1 & 2 closed	Pins 1 & 2 closed
64MB	Pins 2 & 3 closed	Pins 2 & 3 closed
72MB	Pins 1 & 2 closed	Pins 1 & 2 closed
80MB	Pins 2 & 3 closed	Pins 2 & 3 closed
96MB	Pins 1 & 2 closed	Pins 1 & 2 closed
128MB	Pins 2 & 3 closed	Pins 2 & 3 closed
128MB	Pins 1 & 2 closed	Pins 1 & 2 closed

CACHE CONFIGURATION

Size	Bank 0	TAG
256KB	(8) 32K x 8	(1) 8K x 8
512KB	(8) 64K x 8	(1) 16K x 8
1MB	(8) 128K x 8	(1) 32K x 8

CACHE JUMPER CONFIGURATION

Size	JP10	JP14	JP20
256KB	Pins 2 & 3 closed	Pins 1 & 2 closed	Open
512KB	Pins 1 & 2 closed	Pins 1 & 2 closed	Closed
1MB	Pins 2 & 3 closed	Pins 2 & 3 closed	Closed

CPU SPEED SELECTION

Speed	JP2	JP4	JP6
60MHz	Open	Open	Open
66MHz	Open	Closed	Open