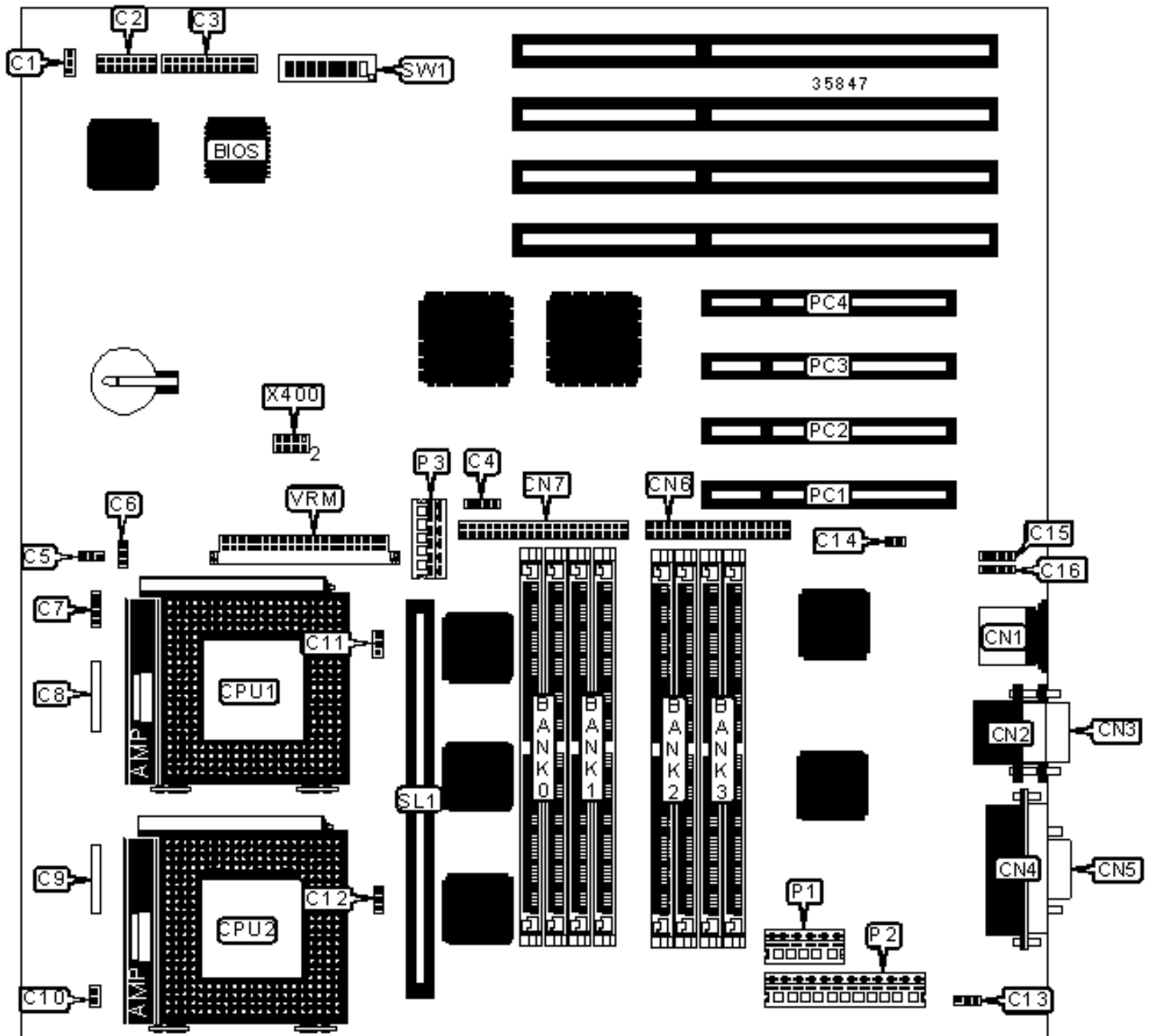


SIEMENS NIXDORF
SYSTEM BOARD D873

Configuration



CONNECTIONS

Purpose	Location	Purpose	Location
Chassis fan power	C1	CAN bus control 1	C16
Aux voltage PRIMERGY 500/700	C2	PS/2 mouse port	CN1
Power supply PRIMERGY 500/700	C3	Serial port 2	CN2
SCSI interface LED	C4	Serial port 1	CN3
Chassis fan power	C5	Parallel port	CN4
Temperature sensor	C6	VGA port	CN5
Speaker	C7	Floppy drive interface	CN6
Front panel connector	C8	IDE interface	CN7
Front panel connector	C9	5v power supply	P1
On/off switch	C10	5v power supply	P2
Temperature sensor	C11	3.3v power supply	P3
Temperature sensor	C12	32-bit PCI slots	PC1 – PC4
Soft off power supply	C13	Cache slot	SL1
Remote on connector	C14	VRM connector	VRM
CAN bus control 2	C15		

USER CONFIGURABLE SETTINGS

Function	Label	Position
» BIOS normal operation	SW1/1	Off
BIOS recovery mode	SW1/1	On
» Factory configured - do not alter	SW1/2	Unidentified
» Factory configured - do not alter	SW1/3	Unidentified
» Factory configured - do not alter	SW1/4	Unidentified
» BIOS write protect disabled	SW1/5	Off

	BIOS write protect enabled	SW1/5	On
»	Floppy drive write protect disabled	SW1/6	Off
	Floppy drive write protect enabled	SW1/6	On
»	Factory configured - do not alter	SW1/7	Off
»	Factory configured - do not alter	SW1/8	Unidentified

SIMM CONFIGURATION

Size	Bank 0	Bank 1	Bank 2	Bank 3
8MB	(2) 1M x 36	None	None	None
16MB	(2) 2M x 36	None	None	None
16MB	(2) 1M x 36	(2) 1M x 36	None	None
24MB	(2) 2M x 36	(2) 1M x 36	None	None

SIMM CONFIGURATION (CON'T)

Size	Bank 0	Bank 1	Bank 2	Bank 3
24MB	(2) 1M x 36	(2) 1M x 36	(2) 1M x 36	None
32MB	(2) 4M x 36	None	None	None
32MB	(2) 2M x 36	(2) 2M x 36	None	None
32MB	(2) 1M x 36	(2) 1M x 36	(2) 1M x 36	(2) 1M x 36
48MB	(2) 2M x 36	(2) 2M x 36	(2) 2M x 36	None
64MB	(2) 2M x 36	(2) 2M x 36	(2) 2M x 36	(2) 2M x 36
64MB	(2) 8M x 36	None	None	None
64MB	(2) 4M x 36	(2) 4M x 36	None	None
72MB	(2) 8M x 36	(2) 1M x 36	None	None
80MB	(2) 8M x 36	(2) 2M x 36	None	None
96MB	(2) 8M x 36	(2) 4M x 36	None	None

96MB	(2) 4M x 36	(2) 4M x 36	(2) 4M x 36	None
128MB	(2) 16M x 36	None	None	None
128MB	(2) 8M x 36	(2) 8M x 36	None	None
128MB	(2) 4M x 36	(2) 4M x 36	(2) 4M x 36	(2) 4M x 36
136MB	(2) 16M x 36	(2) 1M x 36	None	None
144MB	(2) 16M x 36	(2) 2M x 36	None	None
160MB	(2) 16M x 36	(2) 4M x 36	None	None
192MB	(2) 16M x 36	(2) 8M x 36	None	None
192MB	(2) 8M x 36	(2) 8M x 36	(2) 8M x 36	None
224MB	(2) 16M x 36	(2) 4M x 36	(2) 4M x 36	(2) 4M x 36
256MB	(2) 16M x 36	(2) 16M x 36	None	None
256MB	(2) 8M x 36	(2) 8M x 36	(2) 8M x 36	(2) 8M x 36
272MB	(2) 16M x 36	(2) 16M x 36	(2) 1M x 36	(2) 1M x 36
288MB	(2) 16M x 36	(2) 16M x 36	(2) 2M x 36	(2) 2M x 36
320MB	(2) 16M x 36	(2) 16M x 36	(2) 4M x 36	(2) 4M x 36
384MB	(2) 16M x 36	(2) 16M x 36	(2) 16M x 36	None
512MB	(2) 16M x 36	(2) 16M x 36	(2) 16M x 36	(2) 16M x 36

CACHE CONFIGURATION

Size	SL1
0KB	Not installed
512KB	512KB module installed

VIDEO MEMORY CONFIGURATION

Note: The location of the video memory is unidentified.

CPU SPEED SELECTION

CPU speed	Clock speed	Multiplier	X400/pins 1 & 2	X400/pins 3 & 4	X400/pins 5 & 6	X400/pins 7 & 8
100MHz	66MHz	1.5x	Open	Closed	Open	Open
133MHz	66MHz	2x	Open	Closed	Closed	Open
166MHz	66MHz	2.5x	Open	Closed	Closed	Closed