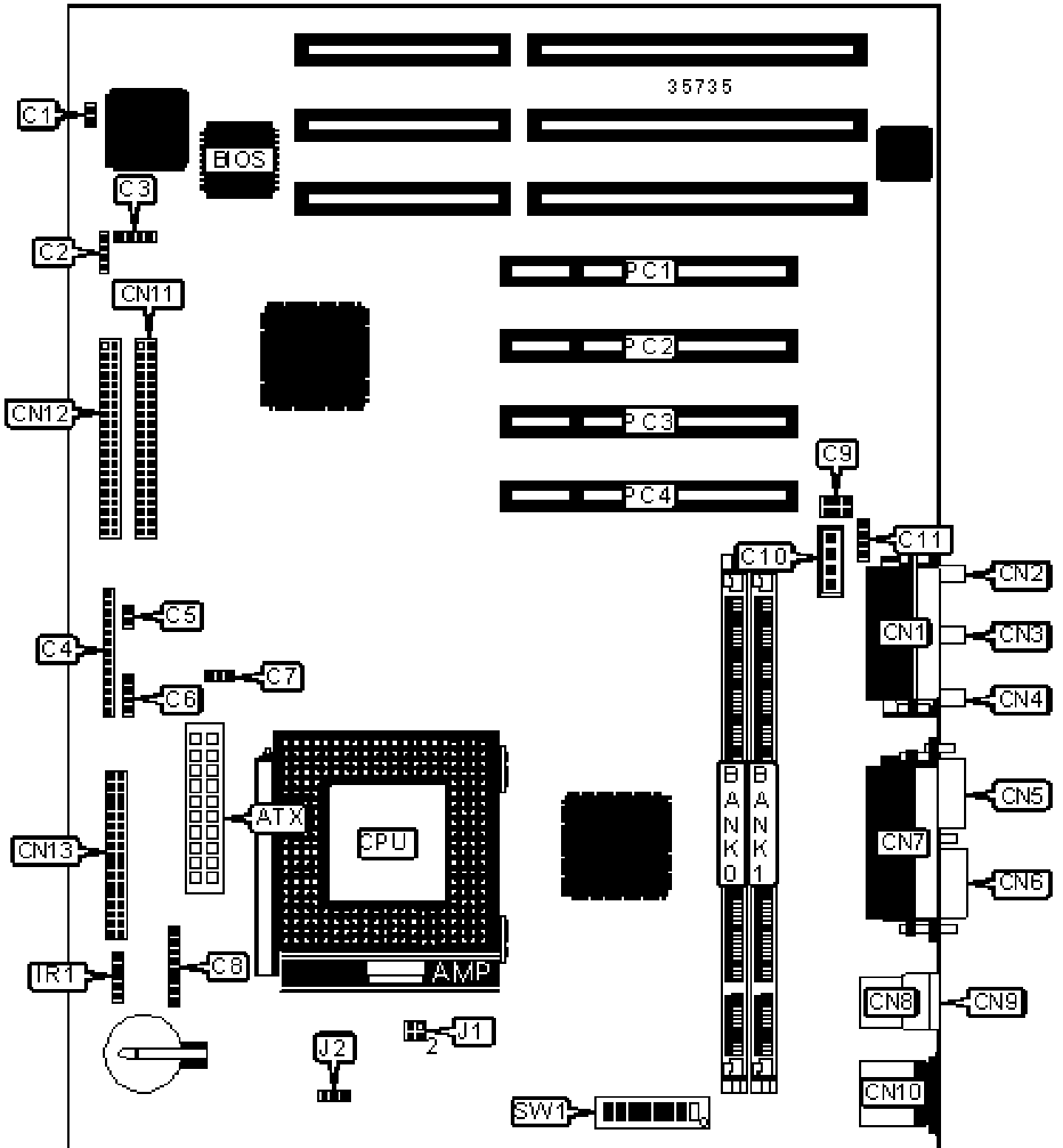


SIEMENS NIXDORF
SYSTEM BOARD D1034

Configuration



CONNECTIONS

Purpose	Location	Purpose	Location
ATX power connector	ATX	Line in	CN3
Wake on modem connector	C1	Line out	CN4
I2C connector	C2	Serial port 2	CN5
Speaker	C3	Serial port 1	CN6
Front panel LED connector	C4	Parallel port	CN7
Soft off power supply	C5	USB connector 1	CN8
SCSI interface LED	C6	USB connector 2	CN9
Chassis fan power	C7	PS/2 mouse port	CN10
Reset switch	C8	IDE interface 1	CN11
Modem connector	C9	IDE interface 2	CN12
Audio in – CD-ROM	C10	Floppy drive interface	CN13
Auxiliary line in	C11	IR connector	IR1
Game/MIDI port	CN1	32-bit PCI slots	PC1 – PC4
Microphone in	CN2		

USER CONFIGURABLE SETTINGS

	Function	Label	Position
»	Flash BIOS normal operation	SW1/5	Off
	Flash BIOS recovery mode	SW1/5	On
»	Password enabled	SW1/6	Off
	Password disabled	SW1/6	On
»	Factory configured - do not alter	SW1/7	Unidentified
»	Floppy drive write protect disabled	SW1/8	Off
	Floppy drive write protect enabled	SW1/8	On

DIMM CONFIGURATION

Size	Bank 0	Bank 1
8MB	(1) 1M x 64	None
16MB	(1) 2M x 64	None
16MB	(1) 1M x 64	(1) 1M x 64
24MB	(1) 2M x 64	(1) 1M x 64
32MB	(1) 4M x 64	None
32MB	(1) 2M x 64	(1) 2M x 64
40MB	(1) 4M x 64	(1) 1M x 64
48MB	(1) 4M x 64	(1) 2M x 64

DIMM CONFIGURATION (CON'T)

Size	Bank 0	Bank 1
64MB	(1) 8M x 64	None
64MB	(1) 4M x 64	(1) 4M x 64
72MB	(1) 8M x 64	(1) 1M x 64
80MB	(1) 8M x 64	(1) 2M x 64
96MB	(1) 8M x 64	(1) 4M x 64
128MB	(1) 16M x 64	None
128MB	(1) 8M x 64	(1) 8M x 64
136MB	(1) 16M x 64	(1) 1M x 64
144MB	(1) 16M x 64	(1) 2M x 64
160MB	(1) 16M x 64	(1) 4M x 64
192MB	(1) 16M x 64	(1) 8M x 64
256MB	(1) 16M x 64	(1) 16M x 64

Note: Board accepts SDRAM memory.

CACHE CONFIGURATION

Note: The location of the 256KB/512KB cache is unidentified.

CPU SPEED SELECTION (AM K5)

CPU speed	Clock speed	Multiplier	SW1/1	SW1/2	SW1/3	SW1/4
90MHz	60MHz	1.5x	Off	On	Off	Off
100MHz	66MHz	1.5x	On	Off	Off	Off
120MHz	60MHz	2x	Off	On	On	Off
133MHz	66MHz	2x	On	Off	On	Off
150MHz	60MHz	2.5x	Off	On	On	On
166MHz	66MHz	2.5x	On	Off	On	On

CPU SPEED SELECTION (AM K6)

CPU speed	Clock speed	Multiplier	SW1/1	SW1/2	SW1/3	SW1/4
166MHz	66MHz	2.5x	On	Off	On	On
200MHz	66MHz	3x	On	Off	Off	On
233MHz	66MHz	3.5x	On	Off	Off	Off

CPU SPEED SELECTION (INTEL)

CPU speed	Clock speed	Multiplier	SW1/1	SW1/2	SW1/3	SW1/4
90MHz	60MHz	1.5x	Off	On	Off	Off
100MHz	66MHz	1.5x	On	Off	Off	Off
120MHz	60MHz	2x	Off	On	On	Off
133MHz	66MHz	2x	On	Off	On	Off

150MHz	60MHz	2.5x	Off	On	On	On
166MHz	66MHz	2.5x	On	Off	On	On
200MHz	66MHz	3x	On	Off	Off	On

CPU SPEED SELECTION (INTEL MMX)

CPU speed	Clock speed	Multiplier	SW1/1	SW1/2	SW1/3	SW1/4
166MHz	66MHz	2.5x	On	Off	On	On
200MHz	66MHz	3x	On	Off	Off	On
233MHz	66MHz	3.5x	On	Off	Off	Off

CPU TYPE SELECTION

Type	J1	J2
Intel	Open	Open
AM K5	Open	Pins 1 & 2, 3 & 4 closed
AM K6 166/200	Pins 1 & 2 closed	Pins 1 & 2, 3 & 4 closed
AM K6-233	Pins 2 & 3 closed	Open