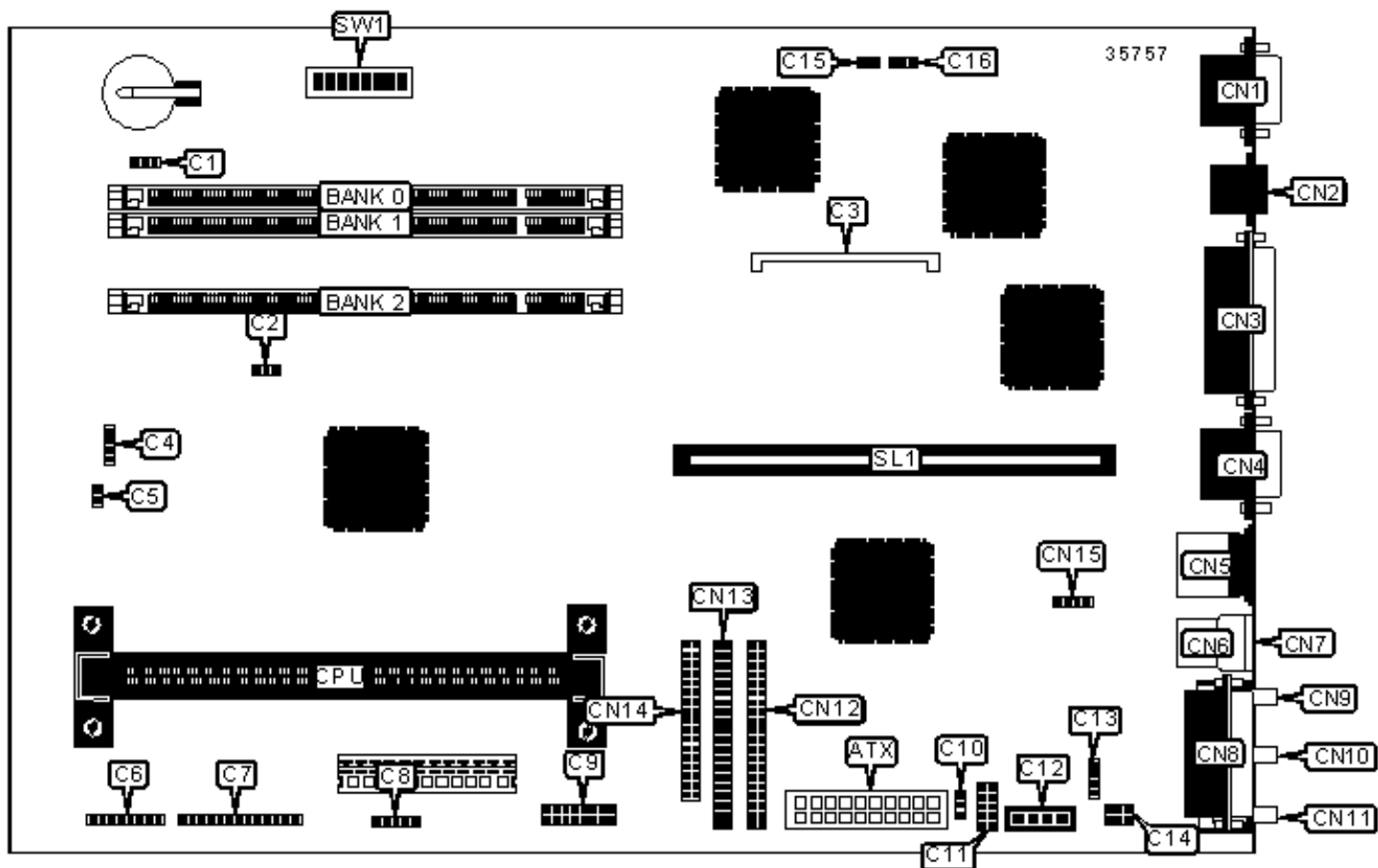


SIEMENS NIXDORF
SYSTEM BOARD D1026

Configuration



CONNECTIONS

Purpose	Location	Purpose	Location
SMM connector	C1	Ethernet 10BaseT connector	CN2
Chassis fan power	C2	Parallel port	CN3
Speaker	C4	Serial port 1	CN4
Soft off power supply	C5	PS/2 mouse port	CN5
Front panel connector	C6	USB connector 1	CN6
Front panel connector	C7	USB connector 2	CN7
IR connector	C8	Game/MIDI port	CN8
Chipcard reader connector	C9	Microphone in	CN9
3v power	C10	Line in	CN10
DSP connector	C11	Line out	CN11
Audio in – CD-ROM	C12	IDE interface 2	CN12
Auxiliary in	C13	IDE interface 1	CN13
Modem connector	C14	Floppy drive interface	CN14
Fax connector	C15	USB connector 3	CN15
Wake on LAN connector	C16	Riser slot	SL1
VGA port	CN1		

USER CONFIGURABLE SETTINGS

	Function	Label	Position
»	Factory configured - do not alter	SW1/1	Off
»	BIOS normal operation	SW1/2	Off
	BIOS recovery mode	SW1/2	On
»	Floppy drive write protect disabled	SW1/3	Off
	Floppy drive write protect enabled	SW1/3	On

	Wake on LAN disabled	SW1/4	Off
	Wake on LAN enabled	SW1/4	On

DIMM CONFIGURATION				
Size	Bank 0	Bank 1	Bank 2	Bank 3
8MB	(1) 1M x 64	None	None	None
16MB	(1) 2M x 64	None	None	None
16MB	(1) 1M x 64	(1) 1M x 64	None	None
24MB	(1) 2M x 64	(1) 1M x 64	None	None
24MB	(1) 1M x 64	(1) 1M x 64	(1) 1M x 64	None
32MB	(1) 4M x 64	None	None	None

DIMM CONFIGURATION (CON'T)				
Size	Bank 0	Bank 1	Bank 2	Bank 3
32MB	(1) 2M x 64	(1) 2M x 64	None	None
32MB	(1) 1M x 64	(1) 1M x 64	(1) 1M x 64	(1) 1M x 64
40MB	(1) 4M x 64	(1) 1M x 64	None	None
48MB	(1) 4M x 64	(1) 2M x 64	None	None
48MB	(1) 2M x 64	(1) 2M x 64	(1) 2M x 64	None
64MB	(1) 2M x 64	(1) 2M x 64	(1) 2M x 64	(1) 2M x 64
64MB	(1) 8M x 64	None	None	None
64MB	(1) 4M x 64	(1) 4M x 64	None	None
72MB	(1) 8M x 64	(1) 1M x 64	None	None
80MB	(1) 8M x 64	(1) 2M x 64	None	None
96MB	(1) 8M x 64	(1) 4M x 64	None	None
96MB	(1) 4M x 64	(1) 4M x 64	(1) 4M x 64	None

128MB	(1) 16M x 64	None	None	None
128MB	(1) 8M x 64	(1) 8M x 64	None	None
128MB	(1) 4M x 64	(1) 4M x 64	(1) 4M x 64	(1) 4M x 64
136MB	(1) 16M x 64	(1) 1M x 64	None	None
144MB	(1) 16M x 64	(1) 2M x 64	None	None
152MB	(1) 16M x 64	(1) 1M x 64	(1) 1M x 64	(1) 1M x 64
160MB	(1) 16M x 64	(1) 4M x 64	None	None
176MB	(1) 16M x 64	(1) 2M x 64	(1) 2M x 64	(1) 2M x 64
192MB	(1) 16M x 64	(1) 8M x 64	None	None
192MB	(1) 8M x 64	(1) 8M x 64	(1) 8M x 64	None
224MB	(1) 16M x 64	(1) 4M x 64	(1) 4M x 64	(1) 4M x 64
256MB	(1) 32M x 64	None	None	None
256MB	(1) 16M x 64	(1) 16M x 64	None	None
256MB	(1) 8M x 64	(1) 8M x 64	(1) 8M x 64	(1) 8M x 64
272MB	(1) 16M x 64	(1) 16M x 64	(1) 1M x 64	(1) 1M x 64
280MB	(1) 32M x 64	(1) 1M x 64	(1) 1M x 64	(1) 1M x 64
288MB	(1) 16M x 64	(1) 16M x 64	(1) 2M x 64	(1) 2M x 64
304MB	(1) 32M x 64	(1) 2M x 64	(1) 2M x 64	(1) 2M x 64
320MB	(1) 16M x 64	(1) 16M x 64	(1) 4M x 64	(1) 4M x 64
320MB	(1) 16M x 64	(1) 8M x 64	(1) 8M x 64	(1) 8M x 64
352MB	(1) 32M x 64	(1) 4M x 64	(1) 4M x 64	(1) 4M x 64
384MB	(1) 16M x 64	(1) 16M x 64	(1) 16M x 64	None
448MB	(1) 32M x 64	(1) 8M x 64	(1) 8M x 64	(1) 8M x 64

DIMM CONFIGURATION (CON'T)

Size	Bank 0	Bank 1	Bank 2	Bank 3
------	--------	--------	--------	--------

512MB	(1) 32M x 64	(1) 32M x 64	None	None
512MB	(1) 16M x 64	(1) 16M x 64	(1) 16M x 64	(1) 16M x 64
640MB	(1) 32M x 64	(1) 16M x 64	(1) 16M x 64	(1) 16M x 64
768MB	(1) 32M x 64	(1) 32M x 64	(1) 32M x 64	None
1024MB	(1) 32M x 64	(1) 32M x 64	(1) 32M x 64	(1) 32M x 64
Note: Board accepts SDRAM memory.				

CACHE CONFIGURATION

Note: 256KB/512KB cache is located on the Pentium II CPU.

VIDEO MEMORY JUMPER CONFIGURATION

Note: 2MB video memory is factory installed. To increase video memory, install module at C3.

CPU SPEED SELECTION

CPU speed	Clock speed	Multiplier	SW1/5	SW1/6	SW1/7	SW1/8
233MHz	66MHz	3.5x	On	On	Off	Off
266MHz	66MHz	4x	On	Off	On	On
300MHz	66MHz	4.5x	On	Off	On	Off
333MHz	66MHz	5x	On	Off	Off	On