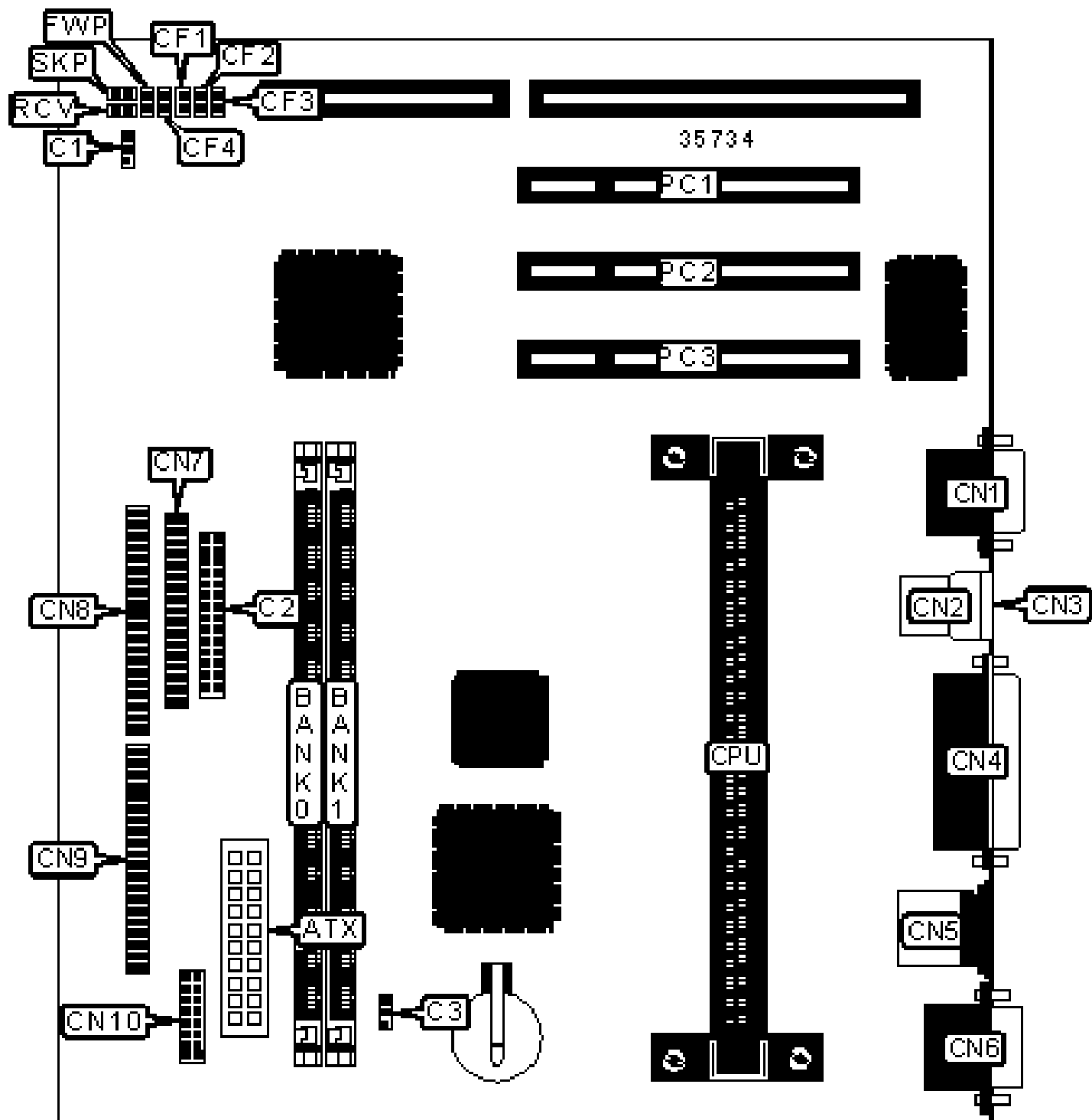


SIEMENS NIXDORF
SYSTEM BOARD D1081

Configuration



CONNECTIONS

Purpose	Location	Purpose	Location
ATX power connector	ATX	PS/2 mouse port	CN5
Chassis fan power	C1	Serial port 1	CN6
Front panel connector	C2	Floppy drive interface	CN7
CPU fan power	C3	IDE interface 1	CN8
VGA port	CN1	IDE interface 2	CN9
USB connector 1	CN2	Serial port 2	CN10
USB connector 2	CN3	32-bit PCI slots	PC1 – PC3
Parallel port	CN4		

USER CONFIGURABLE SETTINGS

Function	Label	Position
Floppy drive write protect disabled	FWP	Open
Floppy drive write protect enabled	FWP	Closed
» Flash BIOS normal operation	RCV	Open
Flash BIOS recovery mode	RCV	Closed
» Factory configured - do not alter	SKP	Open

DIMM CONFIGURATION

Size	Bank 0	Bank 1
16MB	(1) 2M x 64	None
16MB	(1) 1M x 64	(1) 1M x 64
24MB	(1) 2M x 64	(1) 1M x 64
32MB	(1) 4M x 64	None
32MB	(1) 2M x 64	(1) 2M x 64

40MB	(1) 4M x 64	(1) 1M x 64
48MB	(1) 4M x 64	(1) 2M x 64
64MB	(1) 8M x 64	None
64MB	(1) 4M x 64	(1) 4M x 64
72MB	(1) 8M x 64	(1) 1M x 64
80MB	(1) 8M x 64	(1) 2M x 64
96MB	(1) 8M x 64	(1) 4M x 64
128MB	(1) 16M x 64	None
128MB	(1) 8M x 64	(1) 8M x 64
136MB	(1) 16M x 64	(1) 1M x 64

DIMM CONFIGURATION (CON'T)

Size	Bank 0	Bank 1
144MB	(1) 16M x 64	(1) 2M x 64
160MB	(1) 16M x 64	(1) 4M x 64
192MB	(1) 16M x 64	(1) 8M x 64
256MB	(1) 16M x 64	(1) 16M x 64

Note: Board accepts SDRAM memory.

CACHE CONFIGURATION

256KB/512KB cache is located on the Pentium II CPU. 128KB cache is located on the Celeron 300A & 333 C

VIDEO CONFIGURATION

Note: 2MB of video memory is factory installed and is not configurable. The location is unidentified.

CPU SPEED SELECTION

CPU speed	Clock speed	Multiplier	CF1	CF2	CF3	CF4
233MHz	66MHz	3.5x	Open	Closed	Open	Open
266MHz	66MHz	4x	Open	Open	Closed	Closed
300MHz	66MHz	4.5x	Open	Open	Closed	Open
333MHz	66MHz	5x	Open	Open	Open	Closed