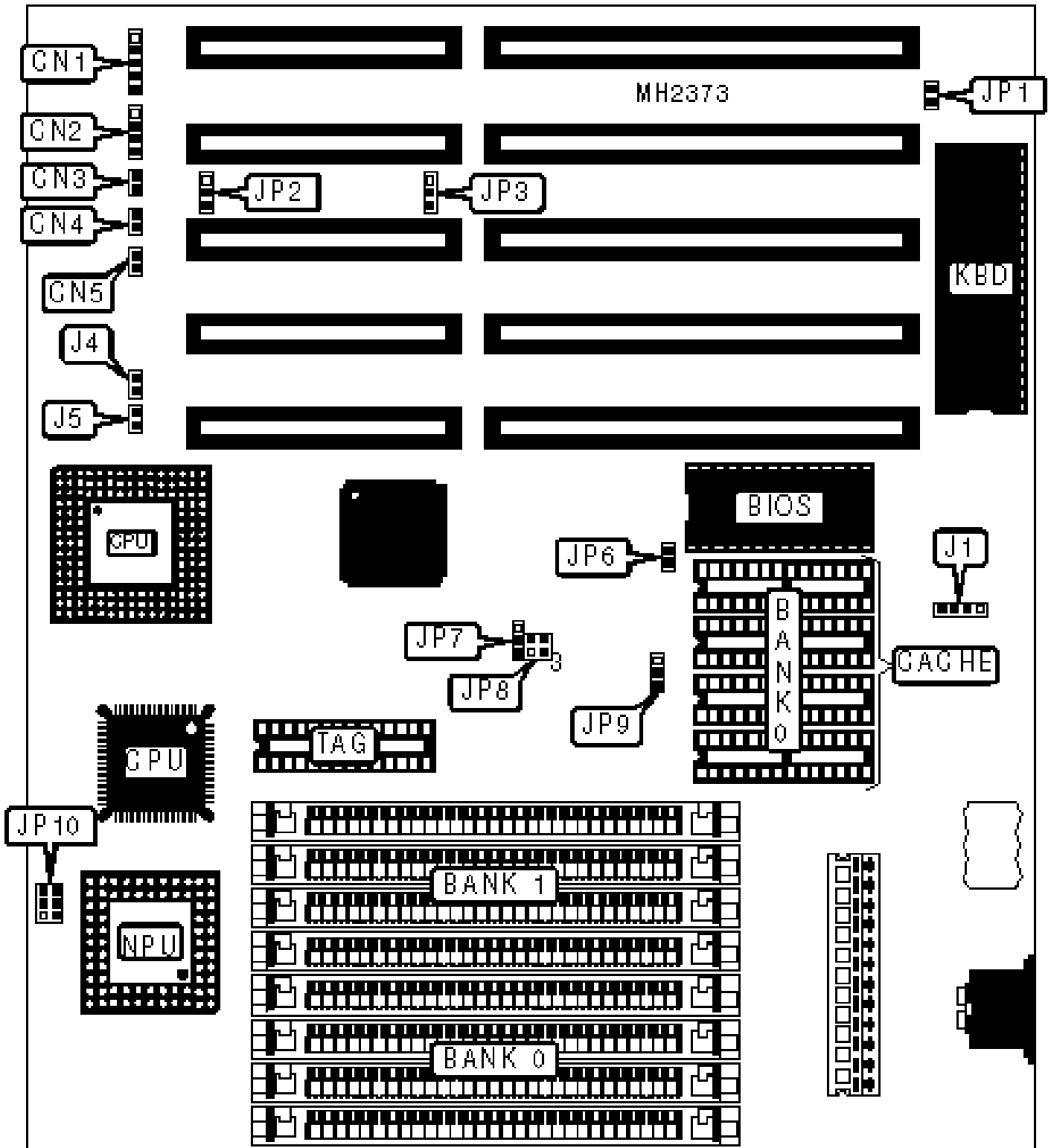


SER

386-AD3

Configuration



CONNECTIONS

Purpose	Location	Purpose	Location
Power LED & keylock	CN1	Turbo LED	CN4
Speaker	CN2	Reset switch	CN5
Turbo switch	CN3	External battery	J1

USER CONFIGURABLE SETTINGS

Function	Jumper	Position
» Factory configured - do not alter	JP1	Open
» Factory configured - do not alter	JP2	Open
» Factory configured - do not alter	JP10	Open

DRAM CONFIGURATION

Size	Bank 0	Bank 1
1MB	(4) 256K x 9	NONE
2MB	(4) 256K x 9	(4) 256K x 9
4MB	(4) 1M x 9	NONE
5MB	(4) 256K x 9	(4) 1M x 9
8MB	(4) 1M x 9	(4) 1M x 9
16MB	(4) 4M x 9	NONE
20MB	(4) 1M x 9	(4) 4M x 9
32MB	(4) 4M x 9	(4) 4M x 9

CACHE CONFIGURATION

Size	Bank 0	TAG
32KB	(4) 8K x 8	(1) 8K x 8

128KB	(4) 32K x 8	(1) 8K x 8
-------	-------------	------------

CACHE JUMPER CONFIGURATION			
Size	JP6	JP8	JP9
32KB	Open	Open	pins 2 & 3 closed
128KB	Closed	pins 1 & 2, 3 & 4 closed	pins 1 & 2 closed

CPU TYPE CONFIGURATION		
Type	JP3	JP7
80386DX	pins 1 & 2 closed	pins 1 & 2 closed
CX486DLC	pins 2 & 3 closed	pins 2 & 3 closed

CPU SPEED CONFIGURATION		
Speed	J4	J5
33MHz	Open	Closed
40MHz	Closed	Open