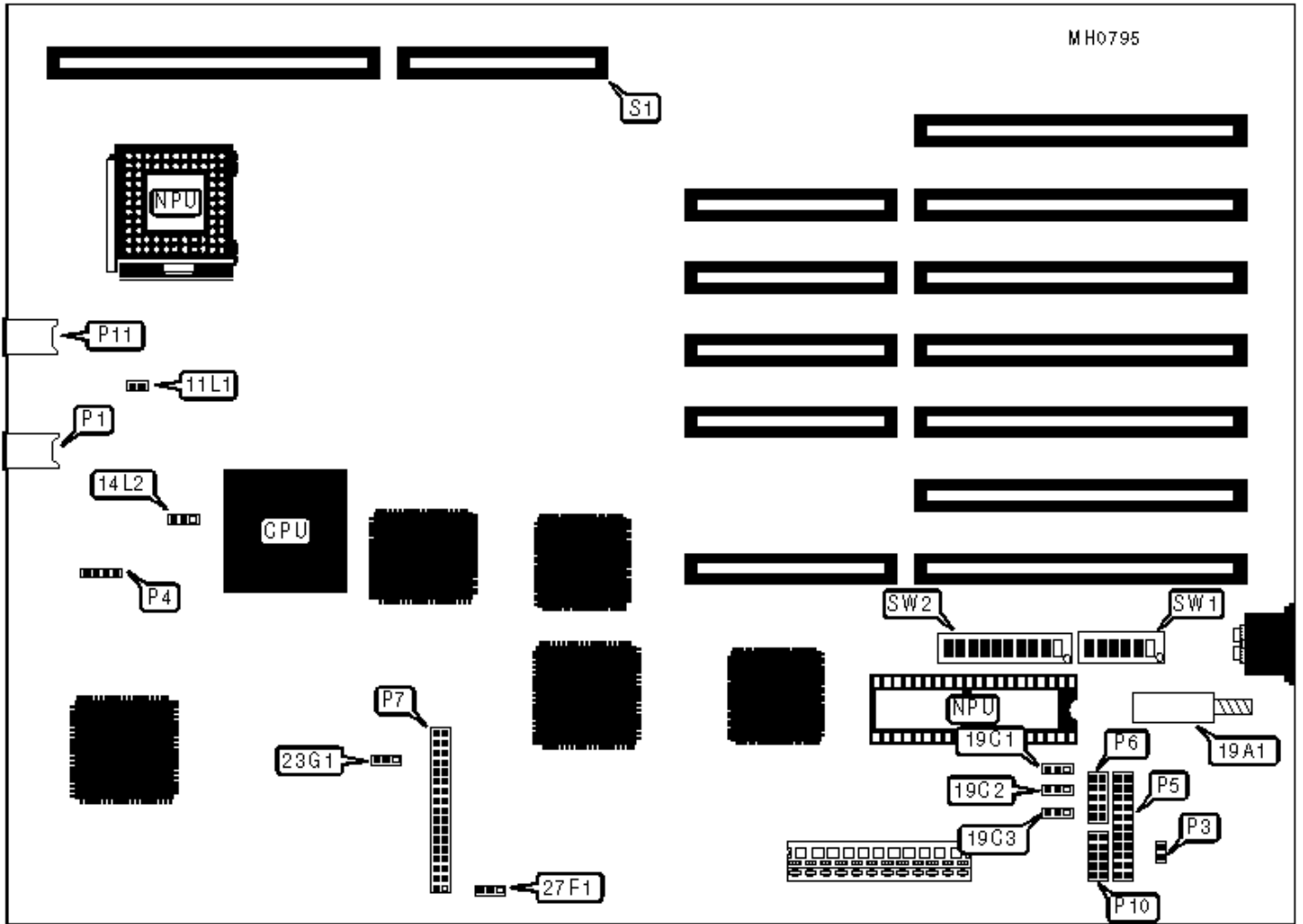


# NEC TECHNOLOGIES, INC.

## POWERMATE

### Configuration



## CONNECTIONS

Purpose	Location	Purpose	Location
Speaker	P1	Floppy drive interface	P7
External battery	P3	Serial port 2	P10
Keylock	P4	Turbo LED	P11
Parallel port	P5	32-bit external memory card	S1
Serial port 1	P6		

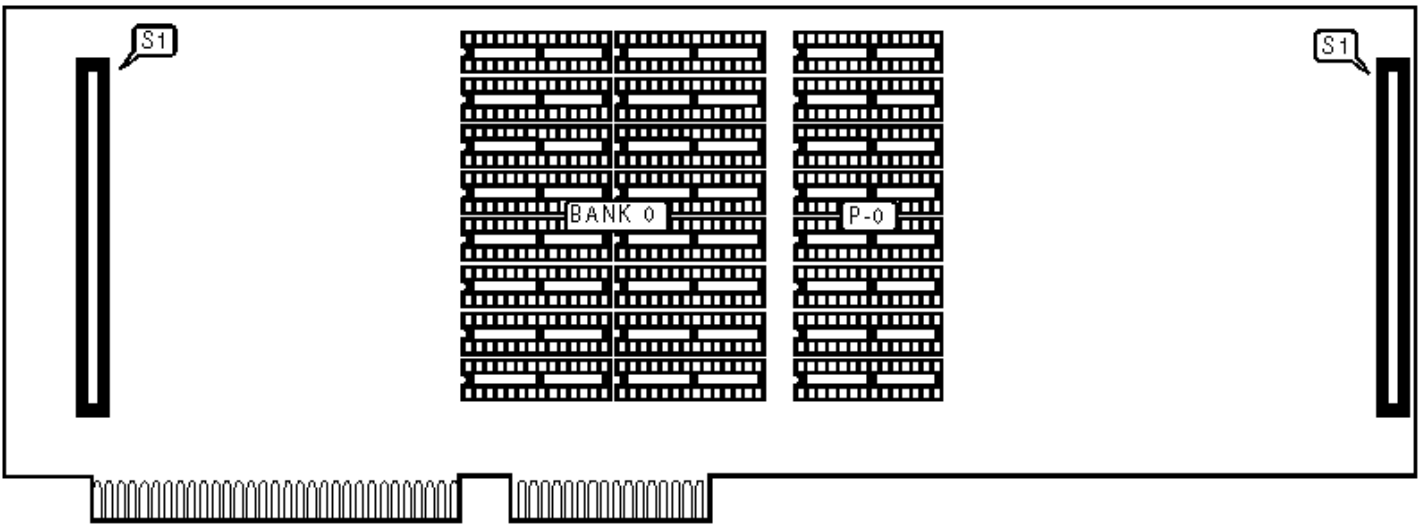
## USER CONFIGURABLE SETTINGS

Function	Jumper/Switch	Position
» Manufacturer test mode disabled	11L1	Open
Manufacturer test mode enabled	11L1	Closed
» Pipeline mode enabled	14L2	pins 1 & 2 closed
Pipeline mode disabled	14L2	pins 2 & 3 closed
» Test mode disabled	19A1	Open
Test mode enabled	19A1	Closed
» Floppy drive type select single speed	23G1	pins 1 & 2 closed
Floppy drive type select dual speed	23G1	pins 2 & 3 closed
» Factory configured - do not alter	SW1/1	Off
» Factory configured - do not alter	SW1/2	Off
» Factory configured - do not alter	SW1/3	Off
» Factory configured - do not alter	SW1/4	On
» Test mode switch disabled	SW1/5	On
Test mode switch enabled	SW1/5	Off
» DRAM speed select 0 wait states	SW1/6	On
DRAM speed select 1 wait state	SW1/6	Off

»	Factory configured - do not alter	SW1/9	Off
»	Factory configured - do not alter	SW1/10	Off
»	Monitor type select color	SW2/1	On
	Monitor type select monochrome	SW2/1	Off
»	Floppy drive interface address select primary	SW2/2	Off
	Floppy drive interface address select secondary	SW2/2	On
»	Floppy drive interface enabled	SW2/3	On
	Floppy drive interface disabled	SW2/3	Off
»	Serial port 2 select COM2	SW2/4	On
	Serial port 2 disabled	SW2/4	Off
»	Serial port 1 select COM1	SW2/5	On
	Serial port 1 disabled	SW2/5	Off
»	System enabled	SW2/6	On
	System disabled	SW2/6	Off
»	NPU enabled	SW2/7	On
	NPU disabled	SW2/7	Off
»	NPU type select 80287	SW2/8	Off
	NPU type select 80387	SW2/8	On

### NPU CONFIGURATION (80287)

Speed	19C1	19C2	19C3 (27F1)
5.3MHz	pins 2 & 3 closed	pins 2 & 3 closed	pins 2 & 3 closed
8MHz	pins 1 & 2 closed	pins 1 & 2 closed	pins 2 & 3 closed
» 10MHz	pins 1 & 2 closed	pins 1 & 2 closed	pins 1 & 2 closed
Note: Depending on the revision # of the mainboard, the board will have either jumper 19C3 or 27F1.			



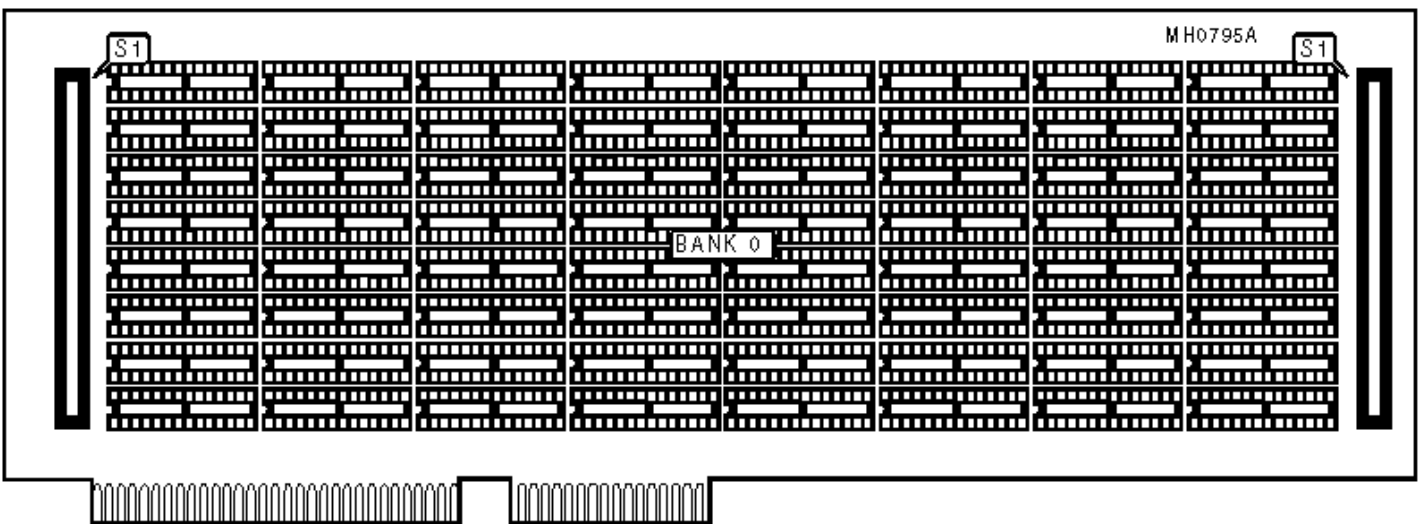
### CONNECTIONS

Purpose	Location
Proprietary external memory card	S1

### DRAM CONFIGURATION

Size	Bank 0	P-0
2MB	(16) 44256	(8) 41256

Note: The locations of Bank 0 and P-0 are unidentified.



### CONNECTIONS

Purpose	Location
Proprietary external memory card	S1

DRAM CONFIGURATION	
Size	Bank 0
8MB	(72) 44256