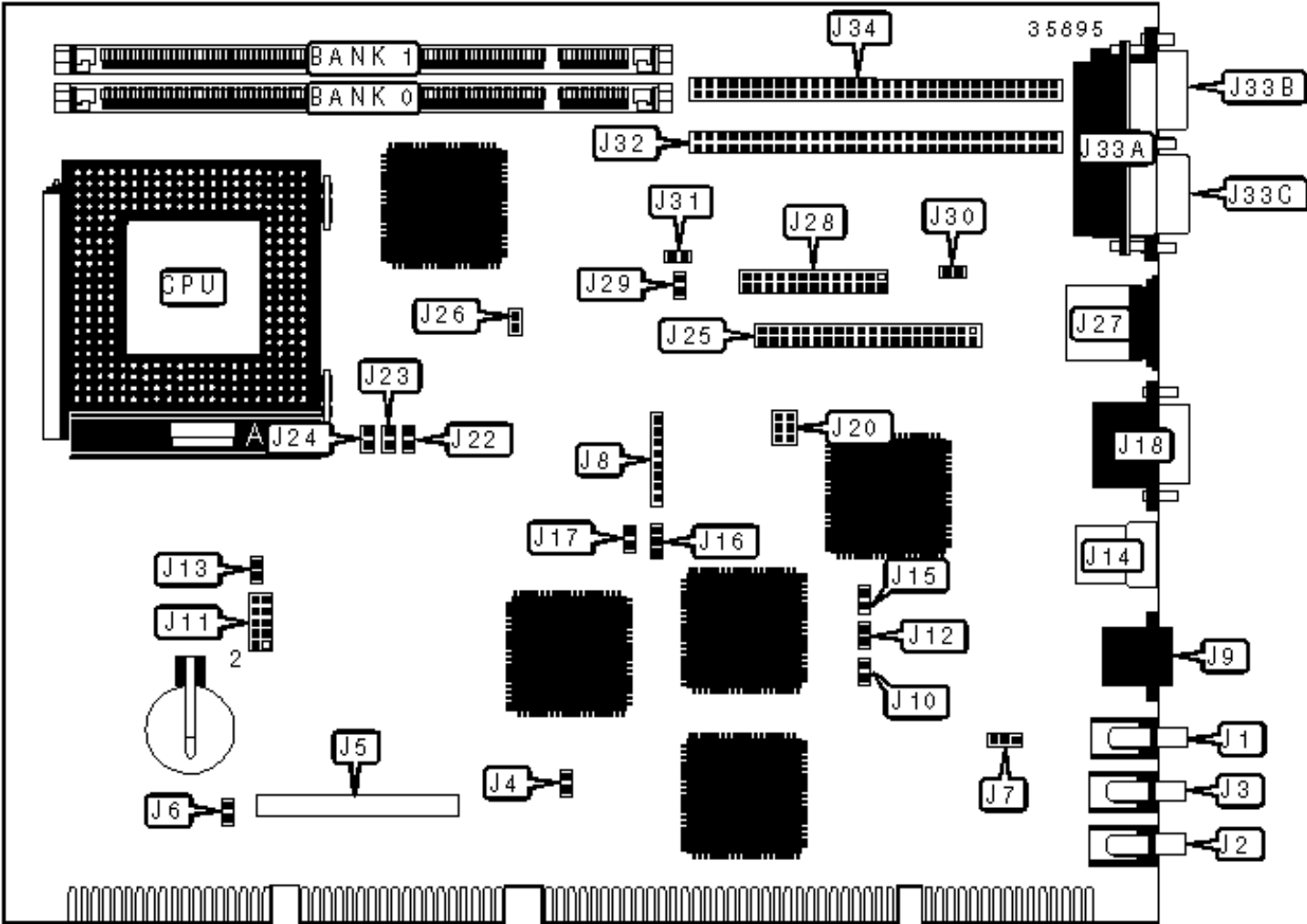


MOTOROLA, INC.

NLXP55

Configuration



## CONNECTIONS

Purpose	Location	Purpose	Location
Line out	J1	VMI host port connector	J25
Line in	J2	PS/2 mouse port	J27
Microphone in	J3	VGA feature connector	J28
CompactFlash connector	J5	PCI debug connector	J32
Auxiliary connector	J8	Parallel port	J33A
Ethernet 10BaseT connector	J9	VGA port	J33B
USB connector	J14	Serial port 1	J33C
Serial port 2	J18	PCI debug connector	J34

## USER CONFIGURABLE SETTINGS

Function	Label	Position
» CompactFlash device select master	J4	Closed
CompactFlash device select slave	J4	Open
» Battery not installed	J6	Pins 2 & 3 closed
Battery installed	J6	Pins 1 & 2 closed
» Speaker tone enabled	J7	Pins 2 & 3 closed
NLX modem tone enabled	J7	Pins 1 & 2 closed
» GIO2 signal enabled	J10	Open
GIO2 signal disabled	J10	Closed
» CMOS memory normal operation	J12	Open
CMOS memory clear	J12	Closed
» Speaker enabled	J13	Closed
Speaker disabled	J13	Open
» GIO0 signal enabled	J15	Open

	GIO0 signal disabled	J15	Closed
»	Boot block write protect disabled	J16	Pins 2 & 3 closed
	Boot block write protect enabled	J16	Pins 1 & 2 closed
»	Flash BIOS write protect disabled	J17	Open
	Flash BIOS write protect enabled	J17	Closed
»	Standard PC tone enabled	J20	Pins 3 & 5, 4 & 6 closed
	Tone from audio IC enabled	J20	Pins 1 & 3, 2 & 4 closed
»	Watchdog timer disabled	J26	Open
	Watchdog timer enabled	J26	Closed
»	On board video enabled	J29	Open
	On board video disabled	J29	Closed

### USER CONFIGURABLE SETTINGS (CON'T)

	Function	Label	Position
»	Video port device not installed	J30	Open
	Video port device installed	J30	Closed
»	VGA feature connector enabled	J31	Closed
	VGA feature connector disabled	J31	Open

### DIMM CONFIGURATION

Size	Bank 0	Bank 1
8MB	(1) 1M x 64	None
16MB	(1) 2M x 64	None
16MB	(1) 1M x 64	(1) 1M x 64
24MB	(1) 2M x 64	(1) 1M x 64
32MB	(1) 4M x 64	None

32MB	(1) 2M x 64	(1) 2M x 64
40MB	(1) 4M x 64	(1) 1M x 64
48MB	(1) 4M x 64	(1) 2M x 64
64MB	(1) 8M x 64	None
64MB	(1) 4M x 64	(1) 4M x 64
72MB	(1) 8M x 64	(1) 1M x 64
80MB	(1) 8M x 64	(1) 2M x 64
96MB	(1) 8M x 64	(1) 4M x 64
128MB	(1) 16M x 64	None
128MB	(1) 8M x 64	(1) 8M x 64
136MB	(1) 16M x 64	(1) 1M x 64
144MB	(1) 16M x 64	(1) 2M x 64
160MB	(1) 16M x 64	(1) 4M x 64
192MB	(1) 16M x 64	(1) 8M x 64
256MB	(1) 16M x 64	(1) 16M x 64
Note: Board accepts EDO memory.		

### CACHE CONFIGURATION

Note: The location of the cache is unidentified.

### VIDEO MEMORY CONFIGURATION

Note: The location of the video memory is unidentified.

### CPU SPEED SELECTION

CPU speed	Clock speed	Multiplier	J22	J23	J24
233MHz	66MHz	3.5x	Open	Open	Open

266MHz	66MHz	4x	Closed	Open	Closed
300MHz	66MHz	4.5x	Closed	Closed	Closed

CPU VOLTAGE SELECTION		
Voltage		J11
	2.2v	Pins 3 & 4 closed
»	2.8v	Pins 7 & 8 closed