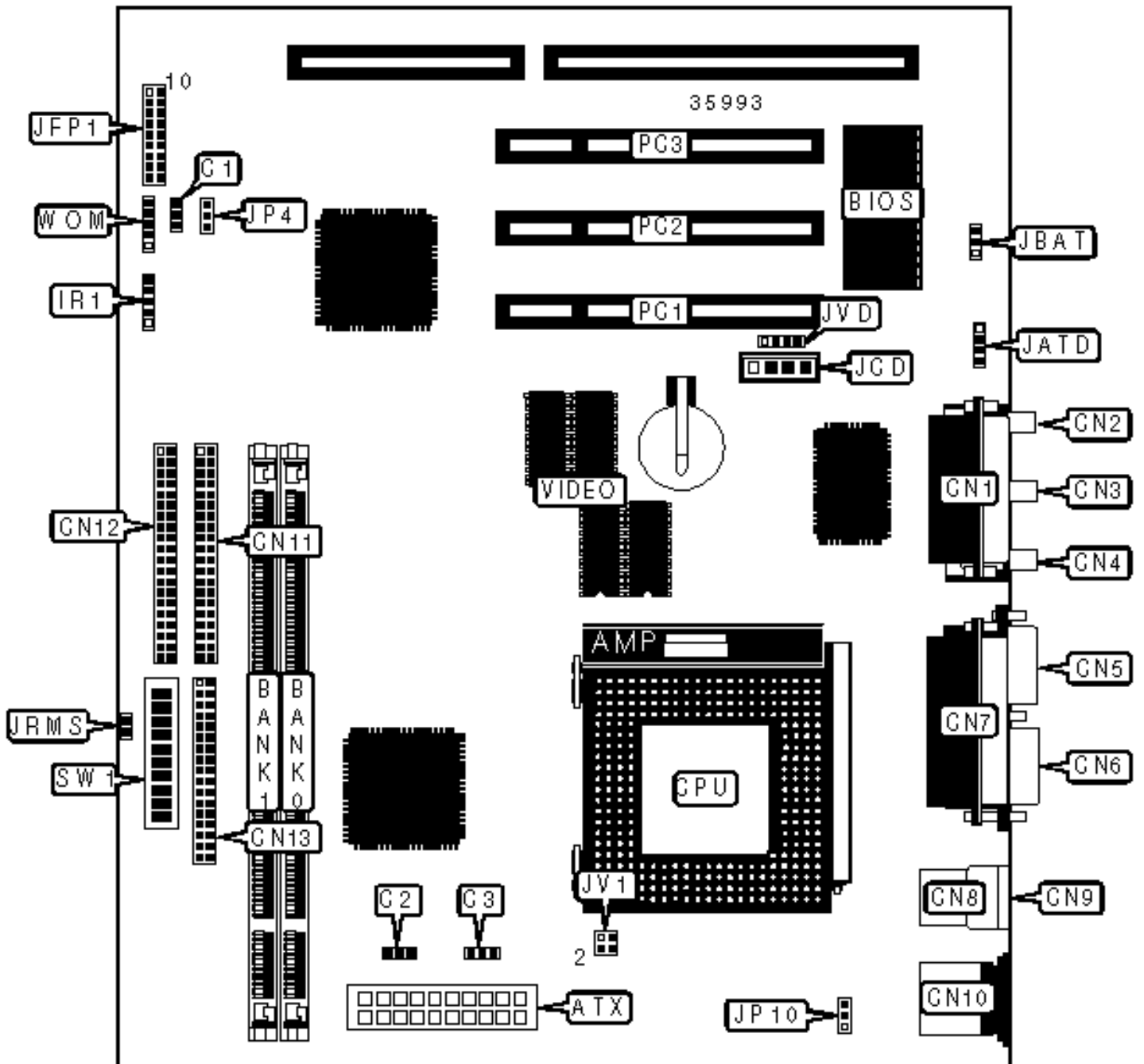


MS-5182

Configuration



CONNECTIONS

Purpose	Location	Purpose	Location
ATX power connector	ATX	Floppy drive interface	CN13
Power supply fan	C1	IR connector	IR1
Chassis fan power	C2	Modem connector	JATD
CPU fan power	C3	Audio in – CD-ROM	JCD
Game/MIDI port	CN1	Keylock	JFP1/pins 1 & 10
Microphone in	CN2	IDE interface LED	JFP1/pins 3 & 13
Line in	CN3	Power LED	JFP1/pins 4 - 6
Line out	CN4	Power switch	JFP1/pins 7 & 8
VGA port	CN5	Speaker	JFP1/pins 13 - 16
Serial port	CN6	Reset switch	JFP1/pins 17 & 18
Parallel port	CN7	Wake on LAN connector	JP4
USB connector 1	CN8	Soft off power supply	JRMS
USB connector 2	CN9	TV audio tuner	JVD
PS/2 mouse port	CN10	32-bit PCI slots	PC1 – PC3
IDE interface 2	CN11	Wake on modem connector	WOM
IDE interface 1	CN12		

USER CONFIGURABLE SETTINGS

	Function	Label	Position
»	CMOS memory normal operation	JBAT	Pins 1 & 2 closed
	CMOS memory clear	JBAT	Pins 2 & 3 closed
»	Keyboard voltage select 5v	JP10	Pins 2 & 3 closed
	Keyboard voltage select 5v standby	JP10	Pins 1 & 2 closed

DIMM CONFIGURATION

Size	Bank 0	Bank 1
8MB	(1) 1M x 64	None
16MB	(1) 2M x 64	None
16MB	(1) 1M x 64	(1) 1M x 64
24MB	(1) 2M x 64	(1) 1M x 64
32MB	(1) 4M x 64	None
32MB	(1) 2M x 64	(1) 2M x 64
40MB	(1) 4M x 64	(1) 1M x 64
48MB	(1) 4M x 64	(1) 2M x 64
64MB	(1) 8M x 64	None
64MB	(1) 4M x 64	(1) 4M x 64
72MB	(1) 8M x 64	(1) 1M x 64
80MB	(1) 8M x 64	(1) 2M x 64
96MB	(1) 8M x 64	(1) 4M x 64
128MB	(1) 8M x 64	(1) 8M x 64

DIMM CONFIGURATION (CON'T)

Size	Bank 0	Bank 1
128MB	(1) 16M x 64	None
136MB	(1) 16M x 64	(1) 1M x 64
144MB	(1) 16M x 64	(1) 2M x 64
160MB	(1) 16M x 64	(1) 4M x 64
192MB	(1) 16M x 64	(1) 8M x 64
256MB	(1) 16M x 64	(1) 16M x 64
256MB	(1) 32M x 64	None

264MB	(1) 32M x 64	(1) 1M x 64
272MB	(1) 32M x 64	(1) 2M x 64
288MB	(1) 32M x 64	(1) 4M x 64
320MB	(1) 32M x 64	(1) 8M x 64
384MB	(1) 32M x 64	(1) 16M x 64
512MB	(1) 32M x 64	(1) 32M x 64
Note: Board accepts EDO memory.		

CACHE CONFIGURATION

Note: The location of the cache is unidentified.

VIDEO MEMORY CONFIGURATION

Note: The video memory is factory installed and is not configurable.

CPU SPEED SELECTION (CX 6X86)

CPU speed	Clock speed	Multiplier	SW1/5	SW1/6	SW1/7	SW1/8	SW1/9	SW1/10
150MHz	60MHz	2x	On	Off	Off	On	On	On
166MHz	66MHz	2x	On	Off	Off	Off	On	On
200MHz	66MHz	2.5x	On	Off	Off	Off	Off	On

CPU SPEED SELECTION (CX 6X86L)

CPU speed	Clock speed	Multiplier	SW1/5	SW1/6	SW1/7	SW1/8	SW1/9	SW1/10
150MHz	60MHz	2x	On	Off	Off	On	On	On
166MHz	66MHz	2x	On	Off	Off	Off	On	On
200MHz	66MHz	2.5x	On	Off	Off	Off	Off	On

CPU SPEED SELECTION (CX 6X86MX)

CPU speed	Clock speed	Multiplier	SW1/5	SW1/6	SW1/7	SW1/8	SW1/9	SW1/10
200MHz	75MHz	2x	On	Off	Off	Off	Off	On
233MHz	66MHz	3x	Off	On	Off	Off	On	On
233MHz	75MHz	2.5x	On	On	Off	Off	Off	On
233MHz	83MHz	2x	On	Off	Off	Off	On	Off
266MHz	83MHz	2.5x	On	On	Off	Off	On	Off

CPU SPEED SELECTION (CX MII)

CPU speed	Clock speed	Multiplier	SW1/5	SW1/6	SW1/7	SW1/8	SW1/9	SW1/10
300MHz	66MHz	3.5x	Off	Off	Off	Off	On	On
333MHz	100MHz	2.5x	On	On	Off	Off	Off	Off

CPU SPEED SELECTION (AM K5)

CPU speed	Clock speed	Multiplier	SW1/5	SW1/6	SW1/7	SW1/8	SW1/9	SW1/10
133MHz	66MHz	2x	On	Off	Off	Off	On	On
150MHz	60MHz	2.5x	On	On	Off	On	On	On
166MHz	66MHz	2.5x	On	On	Off	Off	On	On

CPU SPEED SELECTION (AM K6)

CPU speed	Clock speed	Multiplier	SW1/5	SW1/6	SW1/7	SW1/8	SW1/9	SW1/10
166MHz	66MHz	2.5x	On	On	Off	Off	On	On
200MHz	66MHz	3x	Off	On	Off	Off	On	On
233MHz	66MHz	3.5x	Off	Off	Off	Off	On	On
266MHz	66MHz	4x	On	Off	On	Off	On	On
300MHz	66MHz	4.5x	On	On	On	Off	On	On

CPU SPEED SELECTION (AM K6-2)

CPU speed	Clock speed	Multiplier	SW1/5	SW1/6	SW1/7	SW1/8	SW1/9	SW1/10
300MHz	100MHz	3x	Off	On	Off	Off	Off	Off
333MHz	95MHz	3.5x	Off	Off	Off	On	Off	Off
350MHz	100MHz	3.5x	Off	Off	Off	Off	Off	Off

CPU SPEED SELECTION (INTEL)

CPU speed	Clock speed	Multiplier	SW1/5	SW1/6	SW1/7	SW1/8	SW1/9	SW1/10
90MHz	60MHz	1.5x	Off	Off	Off	On	On	On
100MHz	66MHz	1.5x	Off	Off	Off	Off	On	On
120MHz	60MHz	2x	On	Off	Off	On	On	On
133MHz	66MHz	2x	On	Off	Off	Off	On	On
150MHz	60MHz	2.5x	On	On	Off	On	On	On
166MHz	66MHz	2.5x	On	On	Off	Off	On	On
180MHz	60MHz	3x	Off	On	Off	On	On	On
200MHz	66MHz	3x	Off	On	Off	Off	On	On

CPU SPEED SELECTION (INTEL MMX)

CPU speed	Clock speed	Multiplier	SW1/5	SW1/6	SW1/7	SW1/8	SW1/9	SW1/10
166MHz	66MHz	2.5x	On	On	Off	Off	On	On
200MHz	66MHz	3x	Off	On	Off	Off	On	On
233MHz	66MHz	3.5x	Off	Off	Off	Off	On	On

CPU TYPE SELECTION

Type	JV1
------	-----

Single voltage	Pins 1 & 3, 2 & 4 closed
Dual voltage	Open

CPU VOLTAGE SELECTION (SINGLE)

Voltage	SW1/1	SW1/2	SW1/3	SW1/4
3.4v	Off	On	On	On

CPU VOLTAGE SELECTION (DUAL)

Voltage	V core	SW1/1	SW1/2	SW1/3	SW1/4
3.4v	2.0v	Off	Off	Off	Off
3.4v	2.1v	On	Off	Off	Off
3.4v	2.2v	Off	On	Off	Off
3.4v	2.3v	On	On	Off	Off
3.4v	2.4v	Off	Off	On	Off
3.4v	2.5v	On	Off	On	Off
3.4v	2.6v	Off	On	On	Off
3.4v	2.7v	On	On	On	Off
3.4v	2.8v	Off	Off	Off	On
3.4v	2.9v	On	Off	Off	On
3.4v	3.0v	Off	On	Off	On
3.4v	3.1v	On	On	Off	On
3.4v	3.2v	Off	Off	On	On
3.4v	3.3v	On	Off	On	On
3.4v	3.5v	On	On	On	On