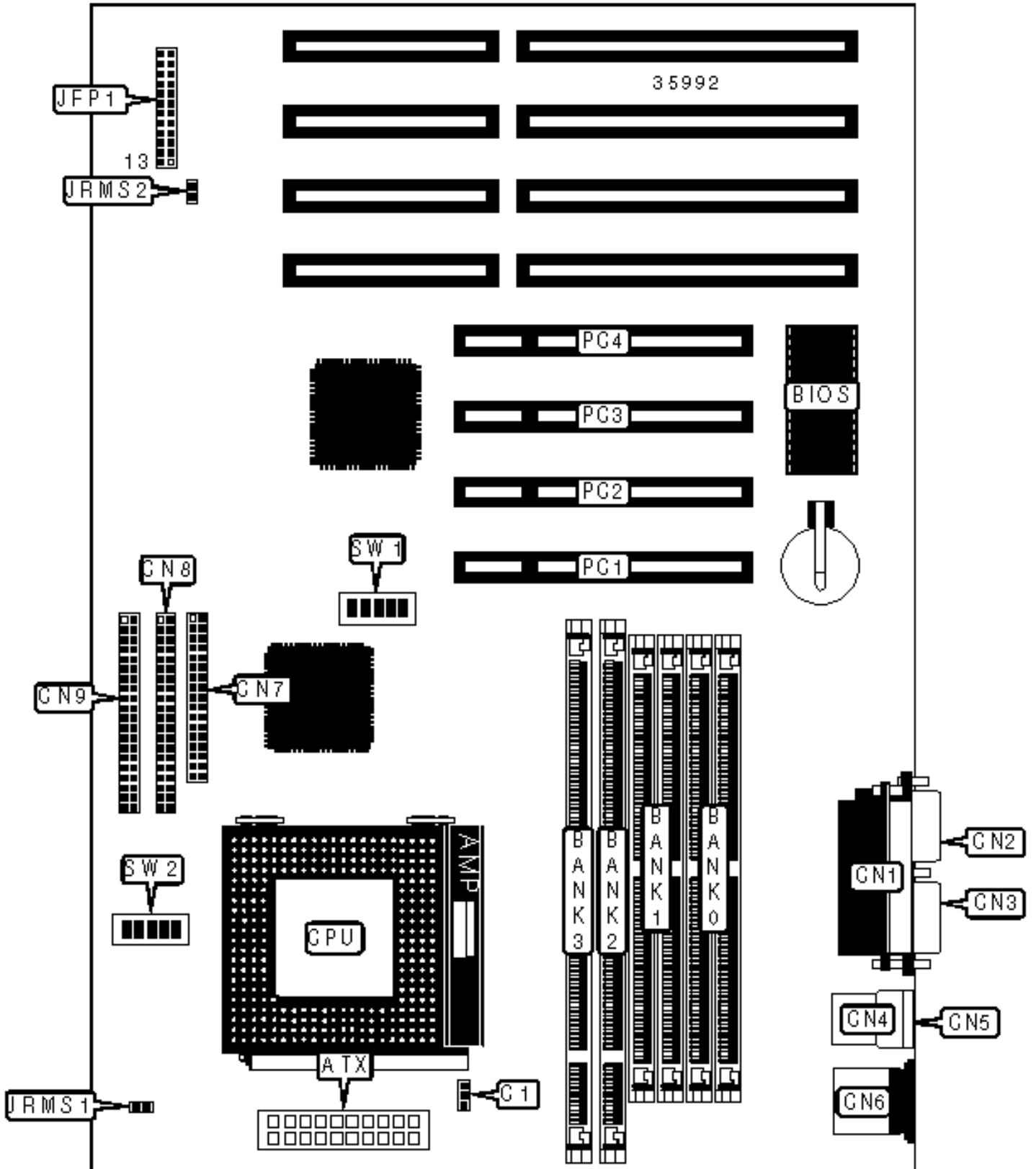


Configuration



CONNECTIONS

Purpose	Location	Purpose	Location
ATX power connector	ATX	IDE interface 2	CN9
CPU fan power	C1	Power LED & keylock	JFP1/pins 1 – 5
Parallel port	CN1	Speaker	JFP1/pins 7 - 10
Serial port 2	CN2	Turbo LED	JFP1/pins 12 & 24
Serial port 1	CN3	Reset switch	JFP1/pins 19 & 20
USB connector 1	CN4	IDE interface LED	JFP1/pins 21 & 22
USB connector 2	CN5	Soft off power supply	JRMS1
PS/2 mouse port	CN6	Soft off power supply	JRMS2
Floppy drive interface	CN7	32-bit PCI slots	PC1 – PC4
IDE interface 1	CN8		

SIMM CONFIGURATION

Size	Bank 0	Bank 1
8MB	(2) 1M x 36	None
16MB	(2) 2M x 36	None
16MB	(2) 1M x 36	(2) 1M x 36
24MB	(2) 2M x 36	(2) 1M x 36
32MB	(2) 4M x 36	None
32MB	(2) 2M x 36	(2) 2M x 36
40MB	(2) 4M x 36	(2) 1M x 36
48MB	(2) 4M x 36	(2) 2M x 36
64MB	(2) 8M x 36	None
64MB	(2) 4M x 36	(2) 4M x 36
72MB	(2) 8M x 36	(2) 1M x 36

80MB	(2) 8M x 36	(2) 2M x 36
96MB	(2) 8M x 36	(2) 4M x 36
128MB	(2) 8M x 36	(2) 8M x 36
128MB	(2) 16M x 36	None
136MB	(2) 16M x 36	(2) 1M x 36
144MB	(2) 16M x 36	(2) 2M x 36
160MB	(2) 16M x 36	(2) 4M x 36
192MB	(2) 16M x 36	(2) 8M x 36
256MB	(2) 16M x 36	(2) 16M x 36
256MB	(2) 32M x 36	None
264MB	(2) 32M x 36	(2) 1M x 36
272MB	(2) 32M x 36	(2) 2M x 36
288MB	(2) 32M x 36	(2) 4M x 36
320MB	(2) 32M x 36	(2) 8M x 36
384MB	(2) 32M x 36	(2) 16M x 36
512MB	(2) 32M x 36	(2) 32M x 36

Note: Board accepts EDO memory.

DIMM CONFIGURATION

Size	Bank 2	Bank 3
8MB	(1) 1M x 64	None
16MB	(1) 2M x 64	None
16MB	(1) 1M x 64	(1) 1M x 64
24MB	(1) 2M x 64	(1) 1M x 64
32MB	(1) 4M x 64	None
32MB	(1) 2M x 64	(1) 2M x 64

40MB	(1) 4M x 64	(1) 1M x 64
48MB	(1) 4M x 64	(1) 2M x 64
64MB	(1) 8M x 64	None
64MB	(1) 4M x 64	(1) 4M x 64
72MB	(1) 8M x 64	(1) 1M x 64
80MB	(1) 8M x 64	(1) 2M x 64
96MB	(1) 8M x 64	(1) 4M x 64
128MB	(1) 8M x 64	(1) 8M x 64
128MB	(1) 16M x 64	None
136MB	(1) 16M x 64	(1) 1M x 64
144MB	(1) 16M x 64	(1) 2M x 64
160MB	(1) 16M x 64	(1) 4M x 64
192MB	(1) 16M x 64	(1) 8M x 64
256MB	(1) 16M x 64	(1) 16M x 64
256MB	(1) 32M x 64	None
264MB	(1) 32M x 64	(1) 1M x 64
272MB	(1) 32M x 64	(1) 2M x 64
288MB	(1) 32M x 64	(1) 4M x 64
320MB	(1) 32M x 64	(1) 8M x 64
384MB	(1) 32M x 64	(1) 16M x 64
512MB	(1) 32M x 64	(1) 32M x 64
Note: Board accepts EDO memory.		

CACHE CONFIGURATION

Note: The location of the cache is unidentified.

CPU SPEED SELECTION (CX 6X86)

CPU speed	Clock speed	Multiplier	SW1/1	SW1/2	SW1/3	SW1/4	SW1/5
150MHz	60MHz	2x	On	Off	Off	On	On
166MHz	66MHz	2x	On	On	Off	On	On
200MHz	75MHz	2x	On	On	Off	Off	On

CPU SPEED SELECTION (CX 6X86L)

CPU speed	Clock speed	Multiplier	SW1/1	SW1/2	SW1/3	SW1/4	SW1/5
166MHz	66MHz	2x	On	On	Off	On	On
200MHz	75MHz	2x	On	On	Off	Off	On

CPU SPEED SELECTION (CX 6X86MX)

CPU speed	Clock speed	Multiplier	SW1/1	SW1/2	SW1/3	SW1/4	SW1/5
166MHz	60MHz	2.5x	On	On	Off	On	On
200MHz	66MHz	2.5x	On	On	Off	Off	On
233MHz	75MHz	2.5x	On	On	Off	On	Off
233MHz	66MHz	3x	Off	On	Off	Off	On
266MHz	75MHz	3x	Off	On	Off	On	Off
266MHz	66MHz	3.5x	Off	Off	Off	Off	On

CPU SPEED SELECTION (AM K5)

CPU speed	Clock speed	Multiplier	SW1/1	SW1/2	SW1/3	SW1/4	SW1/5
90MHz	60MHz	1.5x	Off	Off	Off	On	On
100MHz	66MHz	1.5x	Off	Off	Off	Off	On
120MHz	60MHz	2x	On	Off	Off	On	On
133MHz	66MHz	2x	On	Off	Off	Off	On

150MHz	60MHz	2.5x	On	On	Off	On	On
166MHz	66MHz	2.5x	On	On	Off	Off	On

CPU SPEED SELECTION (AM K6)

CPU speed	Clock speed	Multiplier	SW1/1	SW1/2	SW1/3	SW1/4	SW1/5
166MHz	66MHz	2.5x	On	On	Off	Off	On
200MHz	66MHz	3x	Off	On	Off	Off	On
233MHz	66MHz	3.5x	Off	Off	Off	Off	On

CPU SPEED SELECTION (INTEL)

CPU speed	Clock speed	Multiplier	SW1/1	SW1/2	SW1/3	SW1/4	SW1/5
90MHz	60MHz	1.5x	Off	Off	Off	On	On
100MHz	66MHz	1.5x	Off	Off	Off	Off	On
120MHz	60MHz	2x	On	Off	Off	On	On
133MHz	66MHz	2x	On	Off	Off	Off	On
150MHz	60MHz	2.5x	On	On	Off	On	On
166MHz	66MHz	2.5x	On	On	Off	Off	On
200MHz	66MHz	3x	Off	On	Off	Off	On

CPU SPEED SELECTION (INTEL MMX)

CPU speed	Clock speed	Multiplier	SW1/1	SW1/2	SW1/3	SW1/4	SW1/5
166MHz	66MHz	2.5x	On	On	Off	Off	On
200MHz	66MHz	3x	Off	On	Off	Off	On
233MHz	66MHz	3.5x	Off	Off	Off	Off	On

CPU VOLTAGE SELECTION (SINGLE)

Voltage	SW2/1	SW2/1	SW2/3	SW2/4	SW2/5
3.3v	Off	On	On	Off	On
3.5v	Off	On	On	On	On

CPU VOLTAGE SELECTION (DUAL)

Voltage	V core	SW2/1	SW2/1	SW2/3	SW2/4	SW2/5
3.3v	2.1v	Off	Off	Off	Off	On
3.3v	2.5v	Off	Off	On	Off	On
3.3v	2.8v	Off	On	Off	Off	Off
3.3v	2.9v	Off	On	Off	Off	On
3.3v	3.2v	Off	On	On	Off	Off