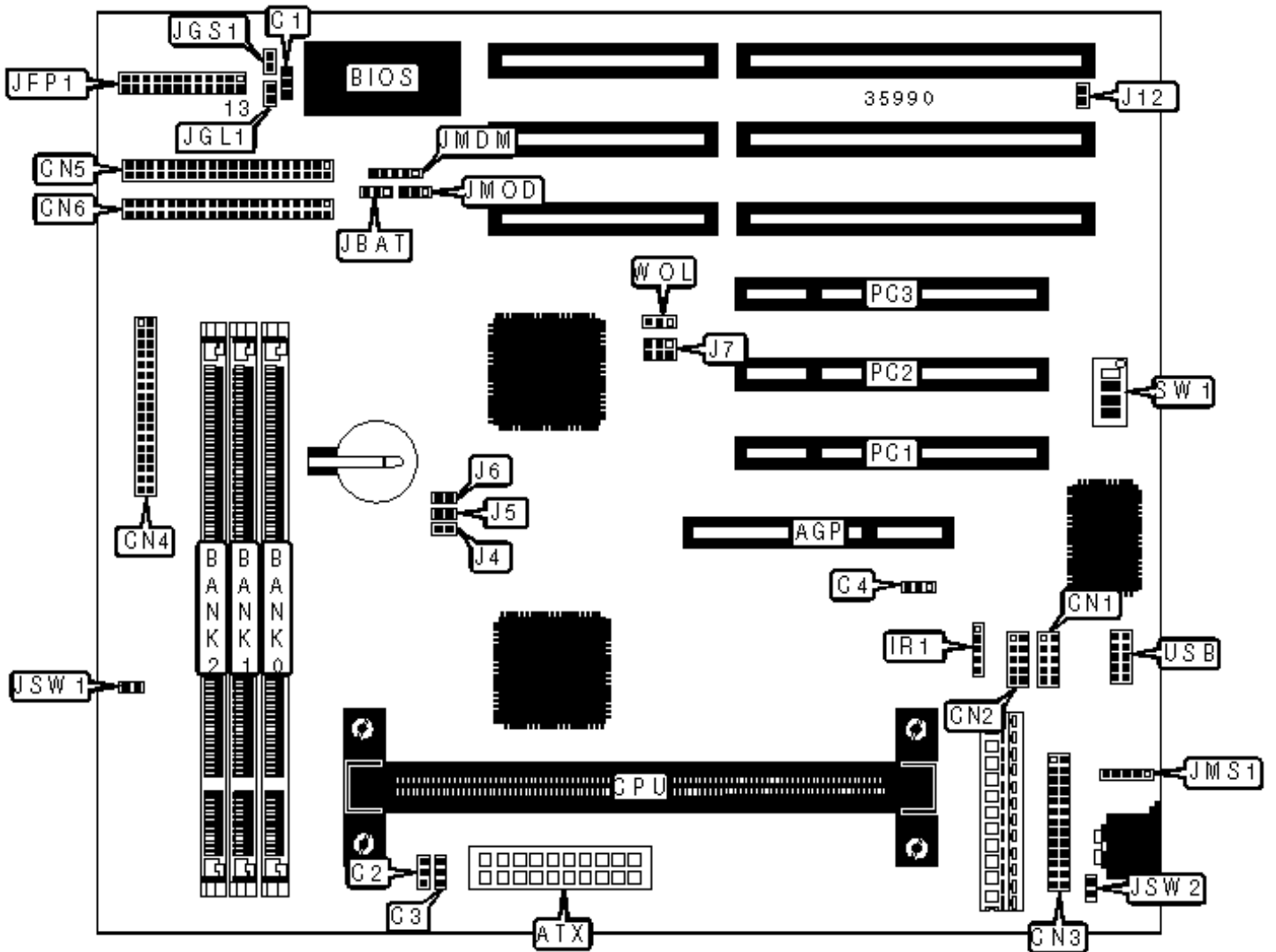


MS-6127

Configuration



CONNECTIONS

Purpose	Location	Purpose	Location
AGP slot	AGP	Power LED & keylock	JFP1/pins 1 – 5
ATX power connector	ATX	Speaker	JFP1/pins 7 - 10
Chassis fan power	C1	IDE interface LED	JFP1/pins 12 & 24
CPU fan power	C2	Turbo LED	JFP1/pins 14 & 15
Power fan	C3	Reset switch	JFP1/pins 21 & 22
CPU fan power	C4	Green PC connector	JGS1
Serial port 2	CN1	Green PC LED	JGL1
Serial port 1	CN2	Wake on modem connector	JMDM
Parallel port	CN3	PS/2 mouse interface	JMS1
Floppy drive interface	CN4	Soft off power supply	JSW1
IDE interface 1	CN5	Soft off power supply	JSW2
IDE interface 2	CN6	32-bit PCI slots	PC1 – PC3
SB-link connector	J7	USB connector	USB
IR connector	IR1	Wake on LAN connector	WOL

USER CONFIGURABLE SETTINGS

Function	Label	Position
» Factory configured - do not alter	J4	Unidentified
» Factory configured - do not alter	J5	Unidentified
» Factory configured - do not alter	J6	Unidentified
Power on mode select boot up by switch	J12	Closed
Power on mode select immediate boot up	J12	Open
» CMOS memory normal operation	JBAT	Pins 1 & 2 closed
CMOS memory clear	JBAT	Pins 2 & 3 closed

»	Flash BIOS voltage select 12v	JMOD	Pins 2 & 3 closed
	Flash BIOS voltage select 5v	JMOD	Pins 1 & 2 closed

DIMM CONFIGURATION		
Size	Bank 0	Bank 1
8MB	(1) 1M x 64	None
16MB	(1) 2M x 64	None
16MB	(1) 1M x 64	(1) 1M x 64
24MB	(1) 2M x 64	(1) 1M x 64
32MB	(1) 4M x 64	None
32MB	(1) 2M x 64	(1) 2M x 64
40MB	(1) 4M x 64	(1) 1M x 64
48MB	(1) 4M x 64	(1) 2M x 64
64MB	(1) 8M x 64	None
64MB	(1) 4M x 64	(1) 4M x 64

DIMM CONFIGURATION (CON'T)		
Size	Bank 0	Bank 1
72MB	(1) 8M x 64	(1) 1M x 64
80MB	(1) 8M x 64	(1) 2M x 64
96MB	(1) 8M x 64	(1) 4M x 64
128MB	(1) 16M x 64	None
128MB	(1) 8M x 64	(1) 8M x 64
136MB	(1) 16M x 64	(1) 1M x 64
144MB	(1) 16M x 64	(1) 2M x 64
160MB	(1) 16M x 64	(1) 4M x 64

192MB	(1) 16M x 64	(1) 8M x 64
256MB	(1) 16M x 64	(1) 16M x 64
Note: Board accepts EDO & SDRAM memory.		

CACHE CONFIGURATION

: 256KB/512KB cache is located on the Pentium II CPU. 128KB cache is located on the Celeron 300A & 333 C

CPU SPEED SELECTION

CPU speed	Clock speed	Multiplier	SW1/1	SW1/2	SW1/3	SW1/4
200MHz	66MHz	3x	On	On	Off	On
233MHz	66MHz	3.5x	On	Off	Off	On
266MHz	66MHz	4x	On	On	On	Off
300MHz	66MHz	4.5x	On	Off	On	Off
333MHz	66MHz	5x	On	On	Off	Off