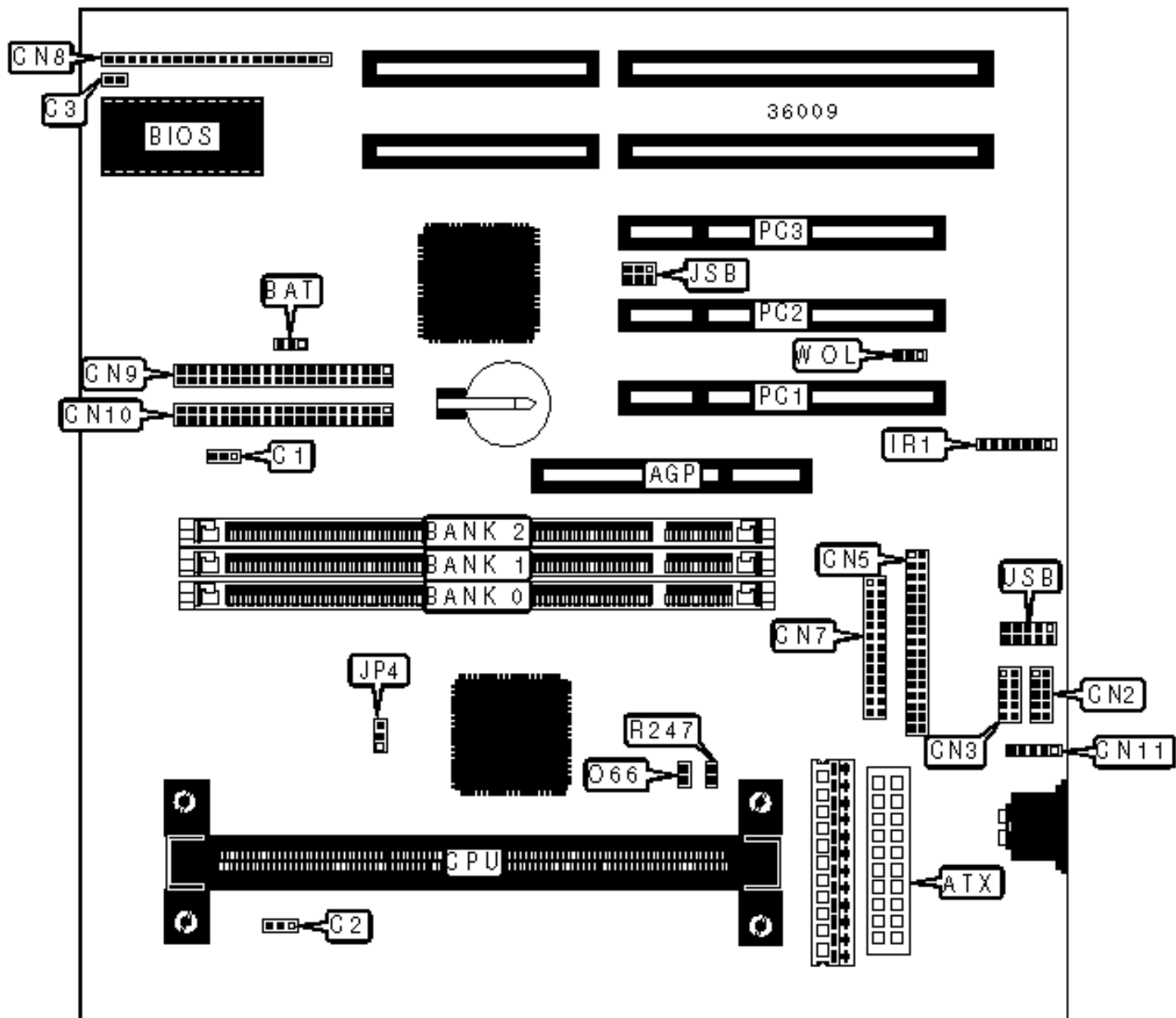


6VBX2

Configuration



## CONNECTIONS

Purpose	Location	Purpose	Location
AGP slot	AGP	IDE interface LED	CN8/pins 15 & 16
ATX power connector	ATX	Turbo LED	CN8/pins 18 & 19
Chassis fan power	C1	Green PC connector	CN8/pins 21 & 22
Chassis fan power	C2	IDE interface 1	CN9
Soft off power supply	C3	IDE interface 2	CN10
Serial port 1	CN2	PS/2 mouse interface	CN11
Serial port 2	CN3	IR connector	IR1
Floppy drive interface	CN5	SB-link connector	JSB
Parallel port	CN7	32-bit PCI slots	PC1 – PC3
Power LED & keylock	CN8/pins 1 – 5	CPU temperature sensor	R247
Speaker	CN8/pins 7 – 10	USB connector	USB
Reset switch	CN8/pins 12 & 13	Wake on LAN connector	WOL

## USER CONFIGURABLE SETTINGS

Function	Label	Position
» CMOS memory normal operation	BAT	Pins 1 & 2 closed
» CMOS memory clear	BAT	Pins 2 & 3 closed

## DIMM CONFIGURATION

Size	Bank 0	Bank 1	Bank 2
16MB	(1) 2M x 64	None	None
32MB	(1) 4M x 64	None	None
32MB	(1) 2M x 64	(1) 2M x 64	None
40MB	(1) 2M x 64	(1) 2M x 64	(1) 1M x 64

48MB	(1) 4M x 64	(1) 2M x 64	None
48MB	(1) 2M x 64	(1) 2M x 64	(1) 2M x 64
56MB	(1) 4M x 64	(1) 2M x 64	(1) 1M x 64
64MB	(1) 8M x 64	None	None
64MB	(1) 4M x 64	(1) 2M x 64	(1) 2M x 64
64MB	(1) 4M x 64	(1) 4M x 64	None
80MB	(1) 8M x 64	(1) 2M x 64	None
80MB	(1) 4M x 64	(1) 4M x 64	(1) 2M x 64
96MB	(1) 8M x 64	(1) 2M x 64	(1) 2M x 64
96MB	(1) 8M x 64	(1) 4M x 64	None
96MB	(1) 4M x 64	(1) 4M x 64	(1) 4M x 64
112MB	(1) 8M x 64	(1) 4M x 64	(1) 2M x 64
128MB	(1) 16M x 64	None	None
128MB	(1) 8M x 64	(1) 4M x 64	(1) 4M x 64
128MB	(1) 8M x 64	(1) 8M x 64	None
144MB	(1) 16M x 64	(1) 2M x 64	None
144MB	(1) 8M x 64	(1) 8M x 64	(1) 2M x 64
160MB	(1) 16M x 64	(1) 2M x 64	(1) 2M x 64
160MB	(1) 16M x 64	(1) 4M x 64	None

### DIMM CONFIGURATION (CON'T)

Size	Bank 0	Bank 1	Bank 2
160MB	(1) 8M x 64	(1) 8M x 64	(1) 4M x 64
176MB	(1) 16M x 64	(1) 4M x 64	(1) 2M x 64
192MB	(1) 16M x 64	(1) 4M x 64	(1) 4M x 64
192MB	(1) 16M x 64	(1) 8M x 64	None

192MB	(1) 8M x 64	(1) 8M x 64	(1) 8M x 64
208MB	(1) 16M x 64	(1) 8M x 64	(1) 2M x 64
224MB	(1) 16M x 64	(1) 8M x 64	(1) 4M x 64
256MB	(1) 32M x 64	None	None
256MB	(1) 16M x 64	(1) 8M x 64	(1) 8M x 64
288MB	(1) 32M x 64	(1) 4M x 64	None
320MB	(1) 32M x 64	(1) 4M x 64	(1) 4M x 64
320MB	(1) 32M x 64	(1) 8M x 64	None
384MB	(1) 32M x 64	(1) 8M x 64	(1) 8M x 64
384MB	(1) 32M x 64	(1) 16M x 64	None
384MB	(1) 16M x 64	(1) 16M x 64	(1) 16M x 64
384MB	(1) 16M x 64	(1) 16M x 64	(1) 16M x 64
512MB	(1) 32M x 64	(1) 16M x 64	(1) 16M x 64
512MB	(1) 32M x 64	(1) 32M x 64	None
Note: Board accepts EDO & SDRAM memory.			

### DIMM FREQUENCY CONFIGURATION

CPU	SDRAM	JP4
66MHz	66MHz	Pins 1 & 2 closed
100MHz	66MHz	Pins 2 & 3 closed
100MHz	100MHz	Pins 1 & 2 closed

### CACHE CONFIGURATION

256KB/512KB cache is located on the Pentium II CPU. 128KB cache is located on the Celeron 300A & 333 C

### CPU SPEED SELECTION

CPU speed	Clock speed	Multiplier	O66
200MHz	66MHz	3x	Closed
233MHz	66MHz	3.5x	Closed
266MHz	66MHz	4x	Closed
300MHz	66MHz	4.5x	Closed
333MHz	66MHz	5x	Closed
350MHz	100MHz	3.5x	Open
400MHz	100MHz	4x	Open
450MHz	100MHz	4.5x	Open