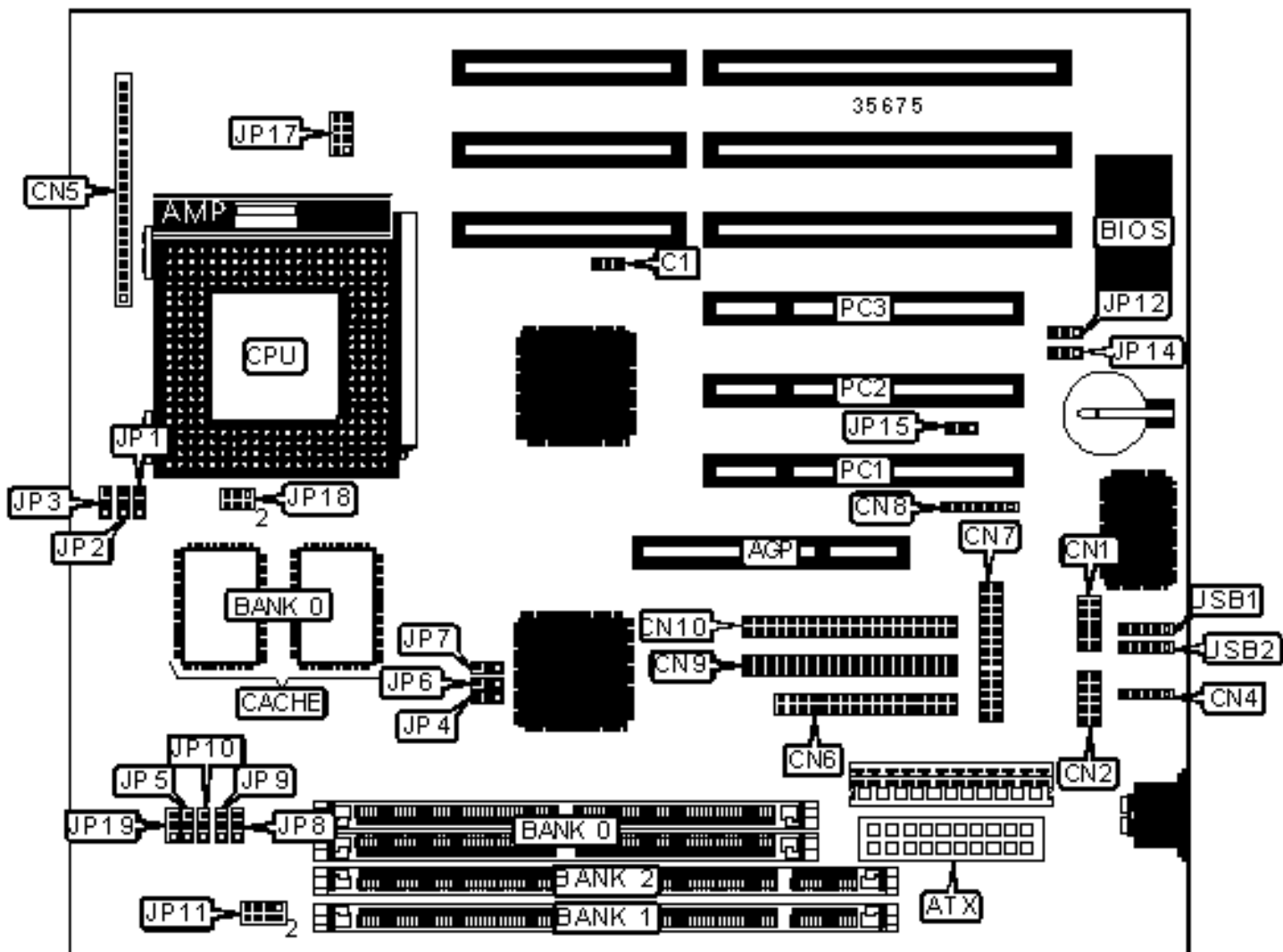


5MVP3

Configuration



## CONNECTIONS

| Purpose              | Location         | Purpose                | Location         |
|----------------------|------------------|------------------------|------------------|
| AGP slot             | AGP              | IDE interface LED      | CN5/pins 21 & 22 |
| ATX power connector  | ATX              | Floppy drive interface | CN6              |
| CPU fan power        | C1               | Parallel port          | CN7              |
| Serial port 2        | CN1              | IR connector           | CN8              |
| Serial port 1        | CN2              | IDE interface 2        | CN9              |
| PS/2 mouse interface | CN4              | IDE interface 1        | CN10             |
| Power LED & keylock  | CN5/pins 1 – 5   | Wake on LAN connector  | JP15             |
| Speaker              | CN5/pins 7 – 10  | 32-bit PCI slots       | PC1 – PC3        |
| Reset switch         | CN5/pins 12 & 13 | USB connector 1        | USB1             |
| Turbo LED            | CN5/pins 15 & 16 | USB connector 2        | USB2             |
| Green PC connector   | CN5/pins 18 & 19 |                        |                  |

## USER CONFIGURABLE SETTINGS

| Function                       | Label | Position          |
|--------------------------------|-------|-------------------|
| Flash BIOS voltage select 12v  | JP12  | Pins 2 & 3 closed |
| Flash BIOS voltage select 5v   | JP12  | Pins 1 & 2 closed |
| » CMOS memory normal operation | JP14  | Pins 1 & 2 closed |
| CMOS memory clear              | JP14  | Pins 2 & 3 closed |

## SIMM CONFIGURATION

| Size | Bank 0      |
|------|-------------|
| 8MB  | (2) 1M x 36 |
| 16MB | (2) 2M x 36 |
| 32MB | (2) 4M x 36 |

|                                 |              |
|---------------------------------|--------------|
| 64MB                            | (2) 8M x 36  |
| 128MB                           | (2) 16M x 36 |
| 256MB                           | (2) 32M x 36 |
| Note: Board accepts EDO memory. |              |

| <b>DIMM CONFIGURATION</b> |             |             |
|---------------------------|-------------|-------------|
| Size                      | Bank 1      | Bank 2      |
| 8MB                       | (1) 1M x 64 | None        |
| 16MB                      | (1) 2M x 64 | None        |
| 16MB                      | (1) 1M x 64 | (1) 1M x 64 |
| 24MB                      | (1) 2M x 64 | (1) 1M x 64 |

| <b>DIMM CONFIGURATION (CON'T)</b> |              |             |
|-----------------------------------|--------------|-------------|
| Size                              | Bank 1       | Bank 2      |
| 32MB                              | (1) 4M x 64  | None        |
| 32MB                              | (1) 2M x 64  | (1) 2M x 64 |
| 40MB                              | (1) 4M x 64  | (1) 1M x 64 |
| 48MB                              | (1) 4M x 64  | (1) 2M x 64 |
| 64MB                              | (1) 8M x 64  | None        |
| 64MB                              | (1) 4M x 64  | (1) 4M x 64 |
| 72MB                              | (1) 8M x 64  | (1) 1M x 64 |
| 80MB                              | (1) 8M x 64  | (1) 2M x 64 |
| 96MB                              | (1) 8M x 64  | (1) 4M x 64 |
| 128MB                             | (1) 16M x 64 | None        |
| 128MB                             | (1) 8M x 64  | (1) 8M x 64 |
| 136MB                             | (1) 16M x 64 | (1) 1M x 64 |

|                                   |              |              |
|-----------------------------------|--------------|--------------|
| 144MB                             | (1) 16M x 64 | (1) 2M x 64  |
| 160MB                             | (1) 16M x 64 | (1) 4M x 64  |
| 192MB                             | (1) 16M x 64 | (1) 8M x 64  |
| 256MB                             | (1) 16M x 64 | (1) 16M x 64 |
| Note: Board accepts SDRAM memory. |              |              |

| <b>DIMM FREQUENCY CONFIGURATION</b> |                   |                   |
|-------------------------------------|-------------------|-------------------|
| Frequency                           | JP4               | JP5               |
| Same as CPU clock                   | Pins 2 & 3 closed | Pins 1 & 2 closed |
| 66MHz                               | Pins 1 & 2 closed | Pins 2 & 3 closed |

| <b>DIMM VOLTAGE CONFIGURATION</b> |                          |
|-----------------------------------|--------------------------|
| Voltage                           | JP11                     |
| 3.3v                              | Pins 5 & 6, 7 & 8 closed |
| 5v                                | Pins 1 & 2, 3 & 4 closed |

| <b>CACHE CONFIGURATION</b> |              |
|----------------------------|--------------|
| Size                       | Bank 0       |
| 512KB                      | (2) 36K x 32 |
| 1MB                        | (2) 128 x 32 |

| <b>CPU SPEED SELECTION (CX 6X86)</b>                    |             |            |       |       |       |       |       |
|---|-------------|------------|-------|-------|-------|-------|-------|
| CPU speed   | Clock speed | Multiplier | JP1   | JP2   | JP3   | JP6   | JP7   |
| 150MHz  | 60MHz       | 2x         | 2 & 3 | 1 & 2 | 1 & 2 | 2 & 3 | 2 & 3 |
| 166MHz  | 66MHz       | 2x         | 2 & 3 | 1 & 2 | 1 & 2 | 2 & 3 | 2 & 3 |
| Note: Pins designated should be in the closed position. |             |            |       |       |       |       |       |

### CPU SPEED SELECTION (CX 6X86, CON'T)

| CPU speed | Clock speed | Multiplier | JP8   | JP9   | JP10  |
|-----------|-------------|------------|-------|-------|-------|
| 150MHz    | 60MHz       | 2x         | 2 & 3 | 1 & 2 | 1 & 2 |
| 166MHz    | 66MHz       | 2x         | 1 & 2 | 1 & 2 | 1 & 2 |

Note: Pins designated should be in the closed position.

### CPU SPEED SELECTION (CX 6X86L)

| CPU speed | Clock speed | Multiplier | JP1   | JP2   | JP3   | JP6   | JP7   |
|-----------|-------------|------------|-------|-------|-------|-------|-------|
| 150MHz    | 60MHz       | 2x         | 2 & 3 | 1 & 2 | 1 & 2 | 2 & 3 | 2 & 3 |
| 166MHz    | 66MHz       | 2x         | 2 & 3 | 1 & 2 | 1 & 2 | 2 & 3 | 2 & 3 |
| 200MHz    | 75MHz       | 2x         | 2 & 3 | 1 & 2 | 1 & 2 | 2 & 3 | 2 & 3 |

Note: Pins designated should be in the closed position.

### CPU SPEED SELECTION (CX 6X86L, CON'T)

| CPU speed | Clock speed | Multiplier | JP8   | JP9   | JP10  |
|-----------|-------------|------------|-------|-------|-------|
| 150MHz    | 60MHz       | 2x         | 2 & 3 | 1 & 2 | 1 & 2 |
| 166MHz    | 66MHz       | 2x         | 1 & 2 | 1 & 2 | 1 & 2 |
| 200MHz    | 75MHz       | 2x         | 1 & 2 | 2 & 3 | 1 & 2 |

Note: Pins designated should be in the closed position.

### CPU SPEED SELECTION (CX 6X86MX)

| CPU speed | Clock speed | Multiplier | JP1   | JP2   | JP3   | JP6   | JP7   |
|-----------|-------------|------------|-------|-------|-------|-------|-------|
| 166MHz    | 66MHz       | 2x         | 2 & 3 | 1 & 2 | 1 & 2 | 2 & 3 | 2 & 3 |
| 166MHz    | 60MHz       | 2.5x       | 2 & 3 | 2 & 3 | 1 & 2 | 2 & 3 | 2 & 3 |
| 200MHz    | 75MHz       | 2x         | 2 & 3 | 1 & 2 | 1 & 2 | 2 & 3 | 2 & 3 |

|   |       |      |       |       |       |       |       |
|---|-------|------|-------|-------|-------|-------|-------|
| 233MHz  | 75MHz | 2.5x | 2 & 3 | 2 & 3 | 1 & 2 | 2 & 3 | 2 & 3 |
| 266MHz  | 83MHz | 2.5x | 2 & 3 | 2 & 3 | 1 & 2 | 1 & 2 | 2 & 3 |
| Note: Pins designated should be in the closed position. |       |      |       |       |       |       |       |

| <b>CPU SPEED SELECTION (CX 6X86MX, CON'T)</b>           |             |            |       |       |       |  |
|---|-------------|------------|-------|-------|-------|--|
| CPU speed   | Clock speed | Multiplier | JP8   | JP9   | JP10  |  |
| 166MHz  | 66MHz       | 2x         | 1 & 2 | 1 & 2 | 1 & 2 |  |
| 166MHz  | 60MHz       | 2.5x       | 2 & 3 | 1 & 2 | 1 & 2 |  |
| 200MHz  | 75MHz       | 2x         | 1 & 2 | 2 & 3 | 1 & 2 |  |
| 233MHz  | 75MHz       | 2.5x       | 1 & 2 | 2 & 3 | 1 & 2 |  |
| 266MHz  | 83MHz       | 2.5x       | 2 & 3 | 2 & 3 | 1 & 2 |  |
| Note: Pins designated should be in the closed position. |             |            |       |       |       |  |

| <b>CPU SPEED SELECTION (CX M II)</b>                    |             |            |       |       |       |       |       |
|---|-------------|------------|-------|-------|-------|-------|-------|
| CPU speed   | Clock speed | Multiplier | JP1   | JP2   | JP3   | JP6   | JP7   |
| 300MHz  | 66MHz       | 3.5x       | 1 & 2 | 1 & 2 | 1 & 2 | 2 & 3 | 2 & 3 |
| Note: Pins designated should be in the closed position. |             |            |       |       |       |       |       |

| <b>CPU SPEED SELECTION (CX M II, CON'T)</b>             |             |            |       |       |       |  |
|---|-------------|------------|-------|-------|-------|--|
| CPU speed   | Clock speed | Multiplier | JP8   | JP9   | JP10  |  |
| 300MHz  | 66MHz       | 3.5x       | 1 & 2 | 1 & 2 | 1 & 2 |  |
| Note: Pins designated should be in the closed position. |             |            |       |       |       |  |

| <b>CPU SPEED SELECTION (AM K5)</b> |             |            |       |       |       |       |       |
|------------------------------------|-------------|------------|-------|-------|-------|-------|-------|
| CPU speed                          | Clock speed | Multiplier | JP1   | JP2   | JP3   | JP6   | JP7   |
| 90MHz                              | 60MHz       | 1.5x       | 1 & 2 | 1 & 2 | 1 & 2 | 2 & 3 | 2 & 3 |

|        |       |      |       |       |       |       |       |
|--------|-------|------|-------|-------|-------|-------|-------|
| 100MHz | 66MHz | 1.5x | 1 & 2 | 1 & 2 | 1 & 2 | 2 & 3 | 2 & 3 |
| 120MHz | 60MHz | 1.5x | 1 & 2 | 1 & 2 | 1 & 2 | 2 & 3 | 2 & 3 |
| 133MHz | 66MHz | 1.5x | 1 & 2 | 1 & 2 | 1 & 2 | 2 & 3 | 2 & 3 |
| 166MHz | 66MHz | 2.5x | 2 & 3 | 2 & 3 | 1 & 2 | 2 & 3 | 2 & 3 |

Note: Pins designated should be in the closed position.

### CPU SPEED SELECTION (AM K5, CON'T)

| CPU speed | Clock speed | Multiplier | JP8   | JP9   | JP10  |
|-----------|-------------|------------|-------|-------|-------|
| 90MHz     | 60MHz       | 1.5x       | 2 & 3 | 1 & 2 | 1 & 2 |
| 100MHz    | 66MHz       | 1.5x       | 1 & 2 | 1 & 2 | 1 & 2 |
| 120MHz    | 60MHz       | 1.5x       | 2 & 3 | 1 & 2 | 1 & 2 |
| 133MHz    | 66MHz       | 1.5x       | 1 & 2 | 1 & 2 | 1 & 2 |
| 166MHz    | 66MHz       | 2.5x       | 1 & 2 | 1 & 2 | 1 & 2 |

Note: Pins designated should be in the closed position.

### CPU SPEED SELECTION (AM K6)

| CPU speed | Clock speed | Multiplier | JP1   | JP2   | JP3   | JP6   | JP7   |
|-----------|-------------|------------|-------|-------|-------|-------|-------|
| 166MHz    | 66MHz       | 2.5x       | 2 & 3 | 2 & 3 | 1 & 2 | 2 & 3 | 2 & 3 |
| 200MHz    | 66MHz       | 3x         | 1 & 2 | 2 & 3 | 1 & 2 | 2 & 3 | 2 & 3 |
| 233MHz    | 66MHz       | 3.5x       | 1 & 2 | 1 & 2 | 1 & 2 | 2 & 3 | 2 & 3 |
| 266MHz    | 66MHz       | 4x         | 2 & 3 | 1 & 2 | 2 & 3 | 2 & 3 | 2 & 3 |
| 300MHz    | 66MHz       | 4.5x       | 2 & 3 | 2 & 3 | 2 & 3 | 2 & 3 | 2 & 3 |

Note: Pins designated should be in the closed position.

### CPU SPEED SELECTION (AM K6, CON'T)

| CPU speed | Clock speed | Multiplier | JP8 | JP9 | JP10 |
|-----------|-------------|------------|-----|-----|------|
|-----------|-------------|------------|-----|-----|------|

|   |       |      |       |       |       |
|---|-------|------|-------|-------|-------|
| 166MHz  | 66MHz | 2.5x | 1 & 2 | 1 & 2 | 1 & 2 |
| 200MHz  | 66MHz | 3x   | 1 & 2 | 1 & 2 | 1 & 2 |
| 233MHz  | 66MHz | 3.5x | 1 & 2 | 1 & 2 | 1 & 2 |
| 266MHz  | 66MHz | 4x   | 1 & 2 | 1 & 2 | 1 & 2 |
| 300MHz  | 66MHz | 4.5x | 1 & 2 | 1 & 2 | 1 & 2 |
| Note: Pins designated should be in the closed position. |       |      |       |       |       |

| <b>CPU SPEED SELECTION (AM K6-2)</b>                    |             |            |       |       |       |       |       |
|---|-------------|------------|-------|-------|-------|-------|-------|
| CPU speed   | Clock speed | Multiplier | JP1   | JP2   | JP3   | JP6   | JP7   |
| 250MHz  | 100MHz      | 2.5x       | 2 & 3 | 2 & 3 | 1 & 2 | 1 & 2 | 2 & 3 |
| 266MHz  | 66MHz       | 4x         | 2 & 3 | 1 & 2 | 2 & 3 | 2 & 3 | 2 & 3 |
| 300MHz  | 100MHz      | 3x         | 1 & 2 | 2 & 3 | 1 & 2 | 1 & 2 | 2 & 3 |
| 333MHz  | 95MHz       | 3.5x       | 1 & 2 | 1 & 2 | 1 & 2 | 1 & 2 | 2 & 3 |
| Note: Pins designated should be in the closed position. |             |            |       |       |       |       |       |

| <b>CPU SPEED SELECTION (AM K6-2, CON'T)</b>             |             |            |       |       |       |
|---|-------------|------------|-------|-------|-------|
| CPU speed   | Clock speed | Multiplier | JP8   | JP9   | JP10  |
| 250MHz  | 100MHz      | 2.5x       | 1 & 2 | 1 & 2 | 2 & 3 |
| 266MHz  | 66MHz       | 4x         | 1 & 2 | 1 & 2 | 1 & 2 |
| 300MHz  | 100MHz      | 3x         | 1 & 2 | 1 & 2 | 2 & 3 |
| 333MHz  | 95MHz       | 3.5x       | 2 & 3 | 1 & 2 | 2 & 3 |
| Note: Pins designated should be in the closed position. |             |            |       |       |       |

| <b>CPU SPEED SELECTION (INTEL)</b> |             |            |       |       |       |       |       |
|------------------------------------|-------------|------------|-------|-------|-------|-------|-------|
| CPU speed                          | Clock speed | Multiplier | JP1   | JP2   | JP3   | JP6   | JP7   |
| 90MHz                              | 60MHz       | 1.5x       | 1 & 2 | 1 & 2 | 1 & 2 | 2 & 3 | 2 & 3 |



|        |       |      |       |       |       |       |       |
|--------|-------|------|-------|-------|-------|-------|-------|
| 100MHz | 66MHz | 1.5x | 1 & 2 | 1 & 2 | 1 & 2 | 2 & 3 | 2 & 3 |
| 120MHz | 60MHz | 2x   | 2 & 3 | 1 & 2 | 1 & 2 | 2 & 3 | 2 & 3 |
| 133MHz | 66MHz | 2x   | 2 & 3 | 1 & 2 | 1 & 2 | 2 & 3 | 2 & 3 |
| 150MHz | 60MHz | 2.5x | 2 & 3 | 2 & 3 | 1 & 2 | 2 & 3 | 2 & 3 |
| 166MHz | 66MHz | 2.5x | 2 & 3 | 2 & 3 | 1 & 2 | 2 & 3 | 2 & 3 |
| 180MHz | 60MHz | 3x   | 1 & 2 | 2 & 3 | 1 & 2 | 2 & 3 | 2 & 3 |
| 200MHz | 66MHz | 3x   | 1 & 2 | 2 & 3 | 1 & 2 | 2 & 3 | 2 & 3 |

Note: Pins designated should be in the closed position.

### CPU SPEED SELECTION (INTEL, CON'T)

| CPU speed | Clock speed | Multiplier | JP8   | JP9   | JP10  |
|-----------|-------------|------------|-------|-------|-------|
| 90MHz     | 60MHz       | 1.5x       | 2 & 3 | 1 & 2 | 1 & 2 |
| 100MHz    | 66MHz       | 1.5x       | 1 & 2 | 1 & 2 | 1 & 2 |
| 120MHz    | 60MHz       | 2x         | 2 & 3 | 1 & 2 | 1 & 2 |
| 133MHz    | 66MHz       | 2x         | 1 & 2 | 1 & 2 | 1 & 2 |
| 150MHz    | 60MHz       | 2.5x       | 2 & 3 | 1 & 2 | 1 & 2 |
| 166MHz    | 66MHz       | 2.5x       | 1 & 2 | 1 & 2 | 1 & 2 |
| 180MHz    | 60MHz       | 3x         | 2 & 3 | 1 & 2 | 1 & 2 |
| 200MHz    | 66MHz       | 3x         | 1 & 2 | 1 & 2 | 1 & 2 |

Note: Pins designated should be in the closed position.

### CPU SPEED SELECTION (INTEL MMX)

| CPU speed | Clock speed | Multiplier | JP1   | JP2   | JP3   | JP6   | JP7   |
|-----------|-------------|------------|-------|-------|-------|-------|-------|
| 166MHz    | 66MHz       | 2.5x       | 2 & 3 | 2 & 3 | 1 & 2 | 2 & 3 | 2 & 3 |
| 200MHz    | 66MHz       | 3x         | 1 & 2 | 2 & 3 | 1 & 2 | 2 & 3 | 2 & 3 |
| 233MHz    | 66MHz       | 3.5x       | 1 & 2 | 1 & 2 | 1 & 2 | 2 & 3 | 2 & 3 |

Note: Pins designated should be in the closed position.

### CPU SPEED SELECTION (INTEL MMX, CON'T)

| CPU speed | Clock speed | Multiplier | JP8   | JP9   | JP10  |
|-----------|-------------|------------|-------|-------|-------|
| 166MHz    | 66MHz       | 2.5x       | 1 & 2 | 1 & 2 | 1 & 2 |
| 200MHz    | 66MHz       | 3x         | 1 & 2 | 1 & 2 | 1 & 2 |
| 233MHz    | 66MHz       | 3.5x       | 1 & 2 | 1 & 2 | 1 & 2 |

Note: Pins designated should be in the closed position.

### CPU TYPE SELECTION

| Type          | JP19              |
|---------------|-------------------|
| All CPU types | Pins 1 & 2 closed |
| AM K6-300MHz  | Pins 2 & 3 closed |

### CPU VOLTAGE SELECTION (SINGLE)

| Voltage | JP18                            |
|---------|---------------------------------|
| Single  | Open                            |
| Dual    | Pins 1 & 2, 3 & 4, 5 & 6 closed |

### CPU VOLTAGE SELECTION (DUAL)

| V core | JP17                            |
|--------|---------------------------------|
| 2.1v   | Pins 1 & 2 closed               |
| 2.2v   | Pins 3 & 4 closed               |
| 2.7v   | Pins 1 & 2, 3 & 4, 5 & 6 closed |
| 2.8v   | Pins 7 & 8 closed               |
| 2.9v   | Pins 1 & 2, 7 & 8 closed        |

|      |  |
|------|--|
| 3.2v | Pins 5 & 6, 7 & 8 closed               |
| 3.3v | Pins 1 & 2, 5 & 6, 7 & 8 closed        |
| 3.5v | Pins 1 & 2, 3 & 4, 5 & 6, 7 & 8 closed |