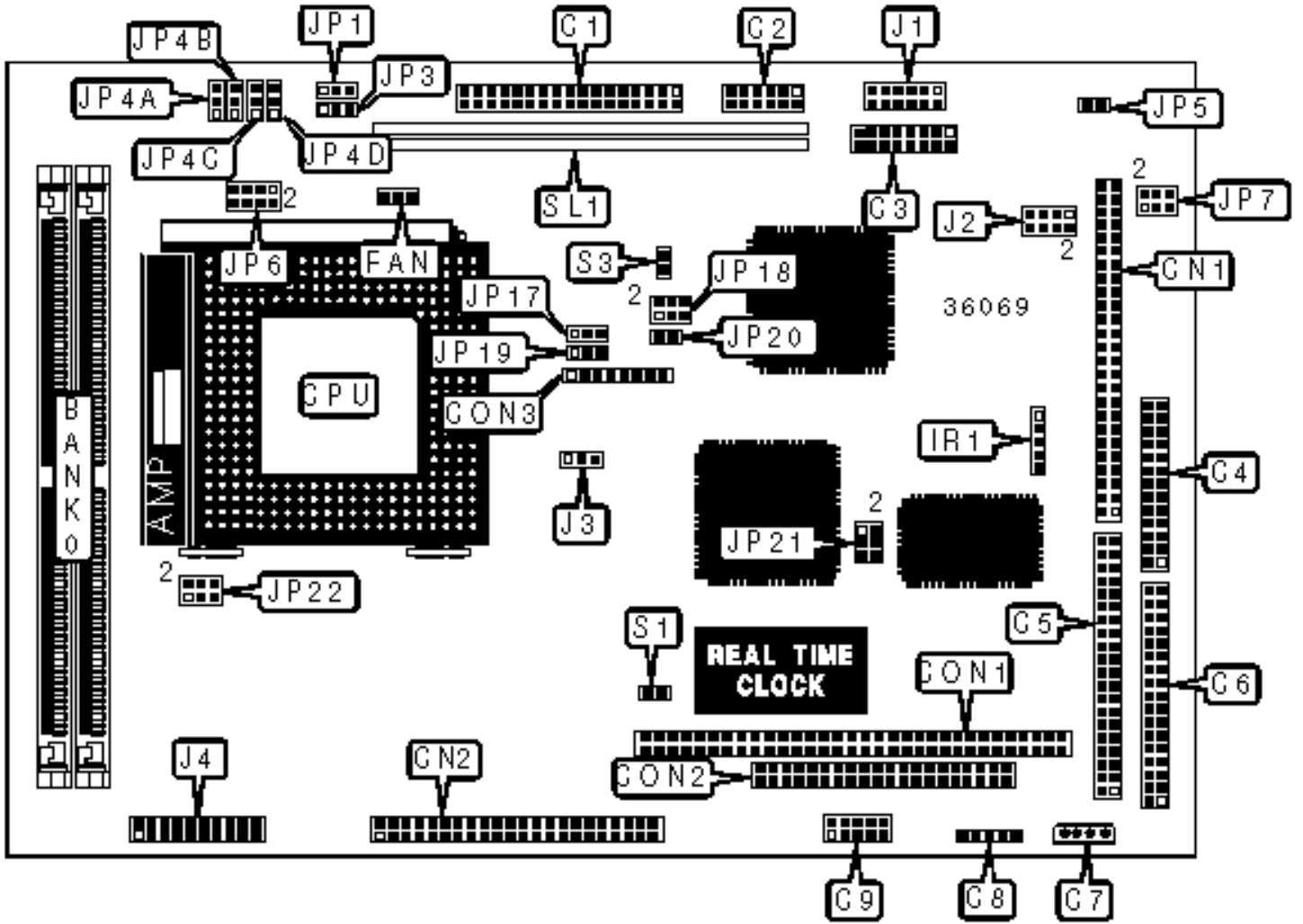


LANNER ELECTRONICS, INC.

EM-586

Configuration



CONNECTIONS

Purpose	Location	Purpose	Location
LCD connector	C1	Serial port 1 – 4	CN1
VGA interface	C2	I/O connector	CN2
Game interface	C3	PC/104 connector	CON1
Parallel port	C4	PC/104 connector	CON2
Green IDE interface PC connector	C5	Chassis fan power	FAN
Floppy drive interface	C6	IR connector	IR1
Power connector	C7	LAN LED & sound switch	J1
Power connector	C8	System switch & LED	J4
DIO connector	C9	Slot 1	SL1

USER CONFIGURABLE SETTINGS

Function	Label	Position
» Factory configured - do not alter	CON3	Unidentified
» Factory configured - do not alter	JP1	Unidentified
» Factory configured - do not alter	JP5	Unidentified
» Panel voltage select 3v	JP3	Pins 1 & 2 closed
Panel voltage select 5v	JP3	Pins 2 & 3 closed
» Factory configured - do not alter	JP17	Pins 1 & 2 closed
» Factory configured - do not alter	JP19	Pins 1 & 2 closed
» Watchdog select hardware	JP20	Closed
Watchdog select software	JP20	Open
» CMOS memory normal operation	S1	Open
CMOS memory clear	S1	Closed
» On board video enabled	S3	Closed

	On board video disabled	S3	Open
--	-------------------------	----	------

SIMM CONFIGURATION

Size	Bank 0
8MB	(2) 1M x 36
16MB	(2) 2M x 36
32MB	(2) 4M x 36
64MB	(2) 8M x 36
128MB	(2) 16M x 36

Note: Board accepts EDO memory.

CACHE CONFIGURATION

Note: The location of the cache is unidentified.

VIDEO MEMORY CONFIGURATION

Note: The location of the video memory is unidentified.

CPU SPEED SELECTION (CX 6X86)

CPU speed	Clock speed	Multiplier	JP18	JP22
120MHz	50MHz	2x	1 & 2, 3 & 4, 5 & 6	1 & 2
150MHz	60MHz	2x	1 & 2	1 & 2
166MHz	66MHz	2x	Open	1 & 2

Note: Pins designated should be in the closed position.

CPU SPEED SELECTION (AM K5)

CPU speed	Clock speed	Multiplier	JP18	JP22
-----------	-------------	------------	------	------

75MHz	50MHz	1.5x	1 & 2, 3 & 4, 5 & 6	Open
90MHz	60MHz	1.5x	1 & 2	Open
100MHz	66MHz	1.5x	Open	Open
120MHz	60MHz	2x	1 & 2	1 & 2
133MHz	66MHz	2x	Open	1 & 2
150MHz	60MHz	2.5x	1 & 2	1 & 2, 3 & 4
166MHz	66MHz	2.5x	Open	1 & 2, 3 & 4

Note: Pins designated should be in the closed position.

CPU SPEED SELECTION (AM K6)

CPU speed	Clock speed	Multiplier	JP18	JP22
166MHz	66MHz	2.5x	Open	1 & 2, 3 & 4
200MHz	66MHz	3x	Open	3 & 4
233MHz	66MHz	3.5x	Open	Open

Note: Pins designated should be in the closed position.

CPU SPEED SELECTION (INTEL)

CPU speed	Clock speed	Multiplier	JP18	JP22
75MHz	50MHz	1.5x	1 & 2, 3 & 4, 5 & 6	Open
90MHz	60MHz	1.5x	1 & 2	Open
100MHz	66MHz	1.5x	Open	Open
120MHz	60MHz	2x	1 & 2	1 & 2
133MHz	66MHz	2x	Open	1 & 2
150MHz	60MHz	2.5x	1 & 2	1 & 2, 3 & 4
166MHz	66MHz	2.5x	Open	1 & 2, 3 & 4
200MHz	66MHz	3x	Open	3 & 4

Note: Pins designated should be in the closed position.

CPU SPEED SELECTION (INTEL MMX)

CPU speed	Clock speed	Multiplier	JP18	JP22
166MHz	66MHz	2.5x	Open	1 & 2, 3 & 4
200MHz	66MHz	3x	Open	3 & 4
233MHz	66MHz	3.5x	Open	Open

Note: Pins designated should be in the closed position.

CPU VOLTAGE SELECTION

Voltage	JP6/pins 1 & 2	JP6/pins 3 & 4	JP6/pins 5 & 6	JP6/pins 7 & 8
2.0v	Closed	Closed	Closed	Closed
2.1v	Open	Closed	Closed	Closed
2.2v	Closed	Open	Closed	Closed
2.3v	Open	Open	Closed	Closed
2.4v	Closed	Closed	Open	Closed
2.5v	Open	Closed	Open	Closed
2.6v	Closed	Open	Open	Closed
2.7v	Open	Open	Open	Closed
2.8v	Closed	Closed	Closed	Open
2.9v	Open	Closed	Closed	Open
3.0v	Closed	Open	Closed	Open
3.1v	Open	Open	Closed	Open
3.2v	Closed	Closed	Open	Open
3.3v	Open	Closed	Open	Open
3.4v	Closed	Open	Open	Open

	3.5v	Open	Open	Open	Open
--	------	------	------	------	------

SERIAL PORT 4 SELECTION					
Setting			JP7		
»		RS-232			Pins 5 & 6 closed
		RS-422			Pins 3 & 4 closed
		RS-485			Pins 1 & 2 closed

WATCHDOG TIME OUT SELECTION					
Seconds		JP4A	JP4B	JP4C	JP4D
»	.5	Pins 1 & 2 closed	Open	Open	Open
	1	Open	Pins 1 & 2 closed	Open	Open
	2	Open	Open	Pins 1 & 2 closed	Open
»	4	Open	Open	Open	Pins 1 & 2 closed
	8	Open	Open	Open	Pins 2 & 3 closed
	16	Open	Open	Pins 2 & 3 closed	Open
	32	Open	Pins 2 & 3 closed	Open	Open
	64	Pins 2 & 3 closed	Open	Open	Open

WATCHDOG SELECTION					
Setting			J3		
»		Reset system			Pins 2 & 3 closed
		NMI system			Pins 1 & 2 closed
		Disabled			Open

DISK ON CHIP ADDRESS SELECTION					
--------------------------------	--	--	--	--	--

Address		JP21
»	Disabled	Pins 2 & 4 closed
	C8000	Pins 1 & 2 closed
	D0000	Pins 3 & 4 closed
	D8000	Pins 5 & 6 closed

PANEL RESOLUTION SELECTION				
Type	J2/pins 1 & 2	J2/pins 3 & 4	J2/pins 5 & 6	J2/pins 7 & 8
1024 x 768 DSTN	Open	Open	Open	Open
1280 x 1024 TFT	Open	Open	Open	Closed
640 x 480 DSTN	Open	Open	Closed	Open
800 x 600 DSTN	Open	Open	Closed	Closed
640 x 480 TFT	Open	Closed	Open	Open
640 x 480 TFT	Open	Closed	Open	Closed
1024 x 768 TFT	Open	Closed	Closed	Open
800 x 600 TFT	Open	Closed	Closed	Closed
800 x 600 TFT	Closed	Open	Open	Open
800 x 600 TFT	Closed	Open	Open	Closed
800 x 600 DSTN	Closed	Open	Closed	Open
800 x 600 DSTN	Closed	Open	Closed	Closed
1024 x 768 TFT	Closed	Closed	Open	Open
1280 x 1024 DSTN	Closed	Closed	Open	Closed
1024 x 768 DSTN	Closed	Closed	Closed	Open
1024 x 768 TFT	Closed	Closed	Closed	Closed