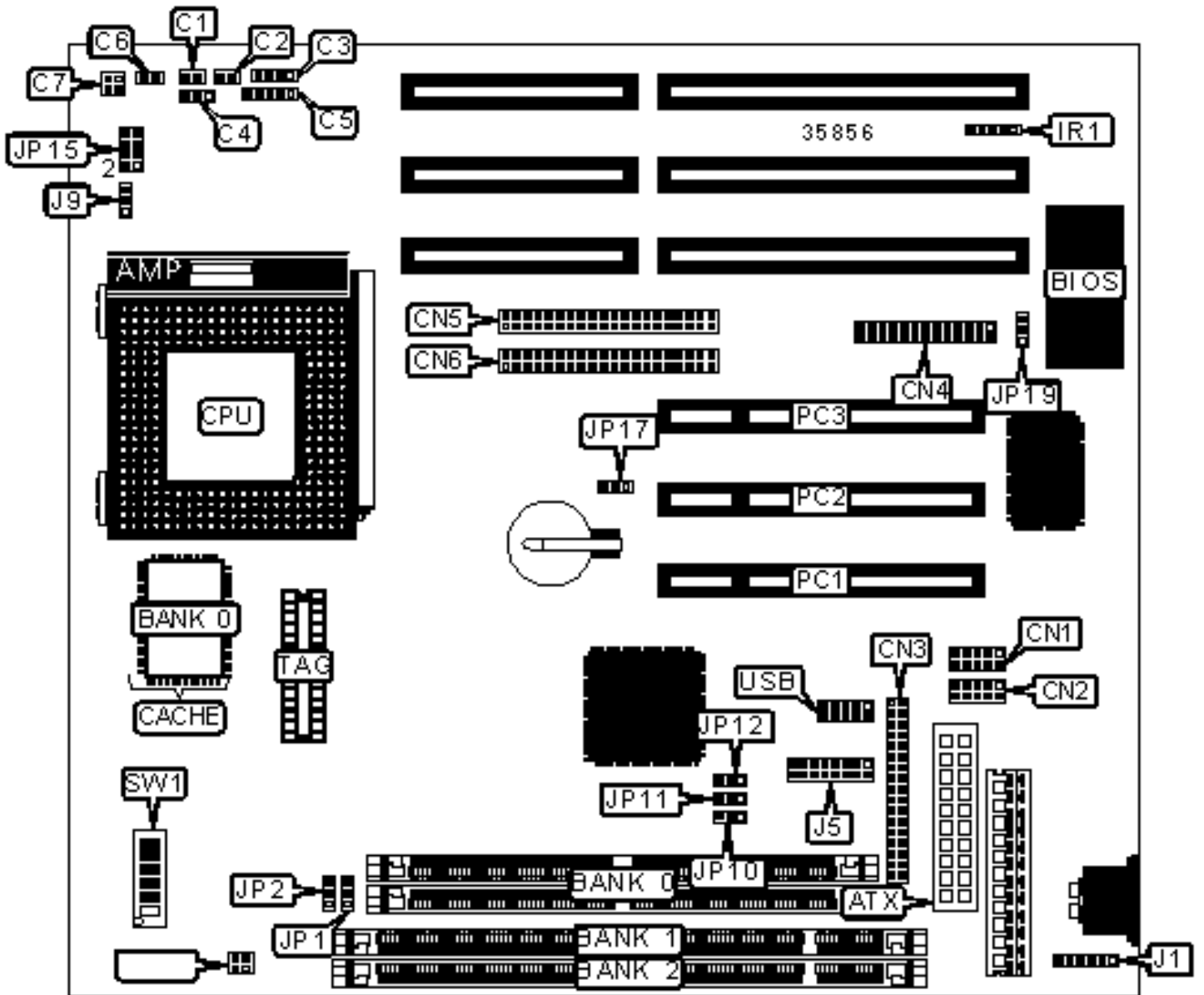


J-MARK COMPUTER CORPORATION

J-TX98 R2

Configuration



CONNECTIONS

Purpose	Location	Purpose	Location
ATX power connector	ATX	Floppy drive interface	CN3
Turbo LED	C1	Parallel port	CN4
Reset switch	C2	IDE interface 2	CN5
Speaker	C3	IDE interface 1	CN6
Turbo switch	C4	IR connector	IR1
Power LED & keylock	C5	PS/2 mouse interface	J1
IDE interface LED	C6	VGA interface	J5
Soft off power supply	C7	CPU fan power	J9
Serial port 1	CN1	32-bit PCI slots	PC1 – PC3
Serial port 2	CN2	USB connector	USB

USER CONFIGURABLE SETTINGS

Function	Label	Position
» Factory configured - do not alter	JP11	Unidentified
» Factory configured - do not alter	JP12	Unidentified
» Factory configured - do not alter	JP14	Unidentified
» CMOS memory normal operation	JP17	Pins 1 & 2 closed
CMOS memory clear	JP17	Pins 2 & 3 closed
Flash BIOS voltage select 12v	JP19	Pins 1 & 2 closed
Flash BIOS voltage select 5v	JP19	Pins 2 & 3 closed

SIMM CONFIGURATION

Size	Bank 0
8MB	(2) 1M x 36

16MB	(2) 2M x 36
32MB	(2) 4M x 36
64MB	(2) 8M x 36
128MB	(2) 16M x 36
Note: Board accepts EDO memory.	

DIMM CONFIGURATION		
Size	Bank 1	Bank 2
8MB	(1) 1M x 64	None
16MB	(1) 2M x 64	None
16MB	(1) 1M x 64	(1) 1M x 64
24MB	(1) 2M x 64	(1) 1M x 64

DIMM CONFIGURATION (CON'T)		
Size	Bank 1	Bank 2
32MB	(1) 4M x 64	None
32MB	(1) 2M x 64	(1) 2M x 64
40MB	(1) 4M x 64	(1) 1M x 64
48MB	(1) 4M x 64	(1) 2M x 64
64MB	(1) 8M x 64	None
64MB	(1) 4M x 64	(1) 4M x 64
72MB	(1) 8M x 64	(1) 1M x 64
80MB	(1) 8M x 64	(1) 2M x 64
96MB	(1) 8M x 64	(1) 4M x 64
128MB	(1) 16M x 64	None
128MB	(1) 8M x 64	(1) 8M x 64

136MB	(1) 16M x 64	(1) 1M x 64
144MB	(1) 16M x 64	(1) 2M x 64
160MB	(1) 16M x 64	(1) 4M x 64
192MB	(1) 16M x 64	(1) 8M x 64
256MB	(1) 16M x 64	(1) 16M x 64
Note: Board accepts SDRAM memory.		

CACHE CONFIGURATION		
Size	Bank 0	TAG
256KB	(1) 32K x 64	(1) 32K x 8
512KB	(1) 64K x 64	(1) 32K x 8

CPU SPEED SELECTION (CX 6X86)								
CPU speed	Clock speed	Multiplier	SW1/1	SW1/2	SW1/3	SW1/4	SW1/5	SW1/6
120MHz	50MHz	2x	On	On	On	On	Off	Off
133MHz	55MHz	2x	On	On	Off	On	Off	Off
150MHz	60MHz	2x	Off	On	On	On	Off	Off
166MHz	66MHz	2x	On	Off	On	On	Off	Off

CPU SPEED SELECTION (IBM 6X86)								
CPU speed	Clock speed	Multiplier	SW1/1	SW1/2	SW1/3	SW1/4	SW1/5	SW1/6
120MHz	50MHz	2x	On	On	On	On	Off	Off
133MHz	55MHz	2x	On	On	Off	On	Off	Off
150MHz	60MHz	2x	Off	On	On	On	Off	Off
166MHz	66MHz	2x	On	Off	On	On	Off	Off

CPU SPEED SELECTION (CX 6X86MX)

CPU speed	Clock speed	Multiplier	SW1/1	SW1/2	SW1/3	SW1/4	SW1/5	SW1/6
166MHz	60MHz	2.5x	Off	On	On	On	On	Off
166MHz	66MHz	2.5x	On	Off	On	On	On	Off
233MHz	66MHz	3x	On	Off	On	Off	On	Off

CPU SPEED SELECTION (IBM 6X86MX)

CPU speed	Clock speed	Multiplier	SW1/1	SW1/2	SW1/3	SW1/4	SW1/5	SW1/6
166MHz	60MHz	2.5x	Off	On	On	On	On	Off
166MHz	66MHz	2.5x	On	Off	On	On	On	Off
233MHz	66MHz	3x	On	Off	On	Off	On	Off

CPU SPEED SELECTION (IDT C6)

CPU speed	Clock speed	Multiplier	SW1/1	SW1/2	SW1/3	SW1/4	SW1/5	SW1/6
150MHz	50MHz	3x	On	On	On	Off	On	Off
180MHz	60MHz	3x	Off	On	On	Off	On	Off
200MHz	66MHz	3x	On	Off	On	Off	On	Off

CPU SPEED SELECTION (AM K5)

CPU speed	Clock speed	Multiplier	SW1/1	SW1/2	SW1/3	SW1/4	SW1/5	SW1/6
75MHz	50MHz	1.5x	On	On	On	Off	Off	Off
90MHz	60MHz	1.5x	Off	On	On	Off	Off	Off
100MHz	66MHz	1.5x	On	Off	On	Off	Off	Off
133MHz	66MHz	1.5x	On	Off	On	Off	Off	Off
166MHz	66MHz	2.5x	On	Off	On	On	On	Off

CPU SPEED SELECTION (AM K6)

CPU speed	Clock speed	Multiplier	SW1/1	SW1/2	SW1/3	SW1/4	SW1/5	SW1/6
166MHz	66MHz	2.5x	On	Off	On	On	On	Off
200MHz	66MHz	3x	On	Off	On	Off	On	Off
233MHz	66MHz	3.5x	On	Off	On	Off	Off	Off
266MHz	66MHz	4x	On	Off	On	On	Off	On
300MHz	66MHz	4.5x	On	Off	On	On	On	On

CPU SPEED SELECTION (INTEL)

CPU speed	Clock speed	Multiplier	SW1/1	SW1/2	SW1/3	SW1/4	SW1/5	SW1/6
75MHz	50MHz	1.5x	On	On	On	Off	Off	Off
90MHz	60MHz	1.5x	Off	On	On	Off	Off	Off
100MHz	66MHz	1.5x	On	Off	On	Off	Off	Off
120MHz	60MHz	2x	Off	On	On	On	Off	Off
133MHz	66MHz	2x	On	Off	On	On	Off	Off
150MHz	60MHz	2.5x	Off	On	On	On	On	Off
166MHz	66MHz	2.5x	On	Off	On	On	On	Off
200MHz	66MHz	3x	On	Off	On	Off	On	Off

CPU SPEED SELECTION (INTEL MMX)

CPU speed	Clock speed	Multiplier	SW1/1	SW1/2	SW1/3	SW1/4	SW1/5	SW1/6
166MHz	66MHz	2.5x	On	Off	On	On	On	Off
200MHz	66MHz	3x	On	Off	On	Off	On	Off
233MHz	66MHz	3.5x	On	Off	On	Off	Off	Off

CPU VOLTAGE SELECTION

Voltage	JP15/pins 1 & 2	JP15/pins 3 & 4	JP15/pins 5 & 6	JP15/pins 7 & 8
2.2v	Open	Closed	Open	Open
2.8v	Open	Open	Open	Closed
2.9v	Closed	Open	Open	Closed
3.2v	Open	Open	Closed	Closed
3.45v	Open	Closed	Closed	Closed
3.52v	Closed	Closed	Closed	Closed

ON BOARD VIDEO SELECTION			
Setting	JP1	JP2	JP10
Enabled	Pins 1 & 2 closed	Pins 1 & 2 closed	Pins 2 & 3 closed
Disabled	Pins 2 & 3 closed	Pins 2 & 3 closed	Pins 1 & 2 closed