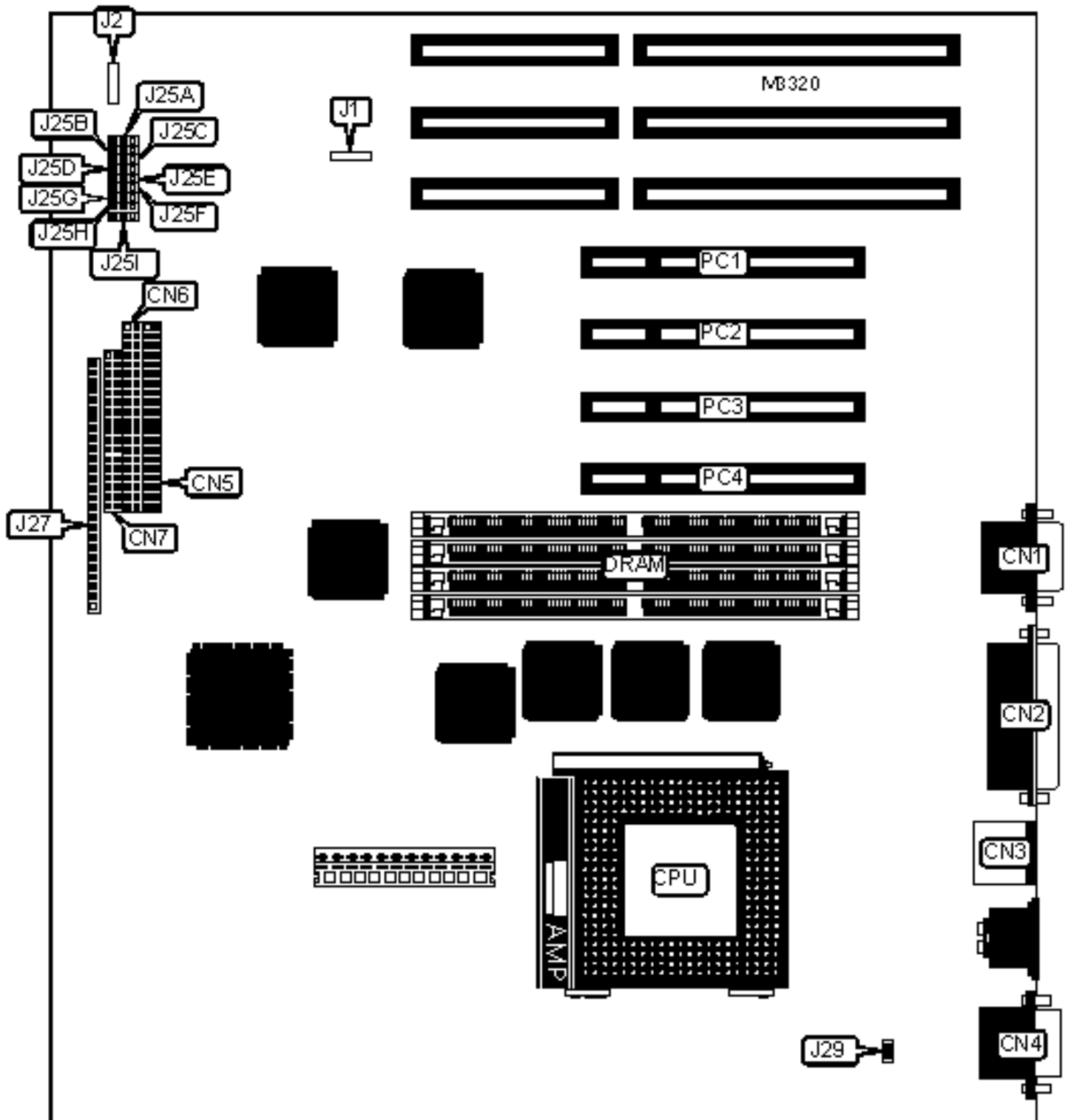


INTEL CORPORATION

PERFORMANCE/AU

Configuration



CONNECTIONS

Function	Label	Function	Label
Serial port 2	CN1	Power on	J27 pins 1 & 2
Parallel port	CN2	Power LED	J27 pins 3 & 4
PS/2 mouse port	CN3	IR connector	J27 pins 6 - 10
Serial port 1	CN4	IDE interface LED	J27 pins 12 - 15
IDE interface 2	CN5	Green PC LED	J27 pins 17 - 19
IDE interface 1	CN6	Reset switch	J27 pins 21 & 22
Floppy drive interface	CN7	Speaker	J27 pins 23 - 26
IDE interface LED	J1	32-bit PCI slots	PC1 - PC4
Chassis fan power	J2		

USER CONFIGURABLE SETTINGS

Setting	Label	Position
» Password normal operation	J25E	Pins 1 & 2 closed
Password clear	J25E	Pins 2 & 3 closed
» CMOS memory normal operation	J25F	Pins 1 & 2 closed
CMOS memory clear	J25F	Pins 2 & 3 closed
» Setup access enabled	J25G	Pins 1 & 2 closed
Setup access disabled	J25G	Pins 2 & 3 closed
» Flash BIOS normal operation	J25H	Pins 1 & 2 closed
Flash BIOS recovery mode	J25H	Pins 2 & 3 closed
» Factory configured - do not alter	J25I	Pins 1 & 2 closed
» CPU voltage ID detection circuitry enabled	J29	N/A
CPU voltage ID detection circuitry disabled	J29	N/A

DRAM

Size	Bank 0	Bank 1
8MB	(2) 1M x 36	None
16MB	(2) 2M x 36	None
16MB	(2) 1M x 36	(2) 1M x 36
32MB	(2) 4M x 36	None
32MB	(2) 2M x 36	(2) 2M x 36
64MB	(2) 8M x 36	None
64MB	(2) 4M x 36	(2) 4M x 36
128MB	(2) 8M x 36	(2) 8M x 36

Note: Board accepts FP memory. The orientation of the banks is unidentified.

CACHE SIZE

Note: 256KB cache is located on the Pentium Pro CPU.

CPU SPEED

Speed	J25A	J25B	J25C	J25C
150MHz	Pins 2 & 3 closed	Pins 2 & 3 closed	Pins 2 & 3 closed	Pins 1 & 2 closed
166MHz	Pins 1 & 2 closed	Pins 1 & 2 closed	Pins 2 & 3 closed	Pins 1 & 2 closed
180MHz	Pins 2 & 3 closed	Pins 2 & 3 closed	Pins 1 & 2 closed	Pins 2 & 3 closed
200MHz	Pins 1 & 2 closed	Pins 1 & 2 closed	Pins 1 & 2 closed	Pins 2 & 3 closed