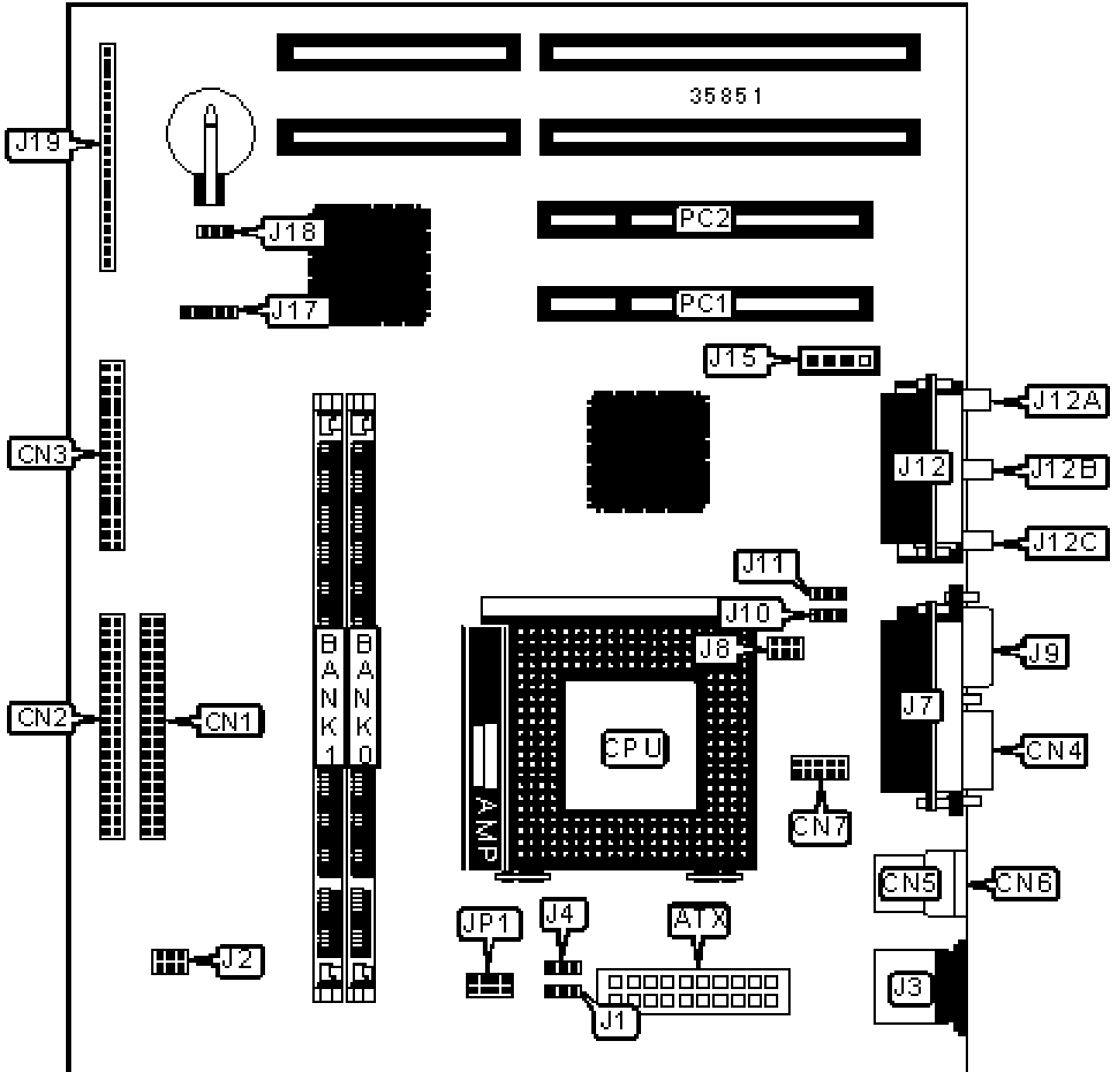


ELITEGROUP COMPUTER SYSTEMS, INC.

P5GX-M

Configuration



## CONNECTIONS

Purpose	Location	Purpose	Location
ATX power connector	ATX	Game/MIDI port	J12
IDE interface 1	CN1	Line in	J12A
IDE interface 2	CN2	Line out	J12B
Floppy drive interface	CN3	Microphone in	J12C
Serial port 1	CN4	Audio in – CD-ROM	J15
USB connector 1	CN5	IR connector	J17
USB connector 2	CN6	Power LED	J19/pins 1 – 3
Serial port 2	CN7	Green PC connector	J19/pins 4 & 5
Chassis fan power	J1	Green PC LED	J19/pins 6 – 8
PS/2 mouse port	J3	Reset switch	J19/pins 9 & 10
Chassis fan power	J4	Speaker	J19/pins 13 – 16
Parallel port	J7	IDE interface LED	J19/pins 17 & 18
VGA port	J9	Soft off power supply	J19/pins 19 & 20
Wake on LAN connector	J10	32-bit PCI slots	PC1 – PC2
Wake on modem connector	J11		

## USER CONFIGURABLE SETTINGS

Function	Label	Position
» CMOS memory normal operation	J18	Pins 1 & 2 closed
CMOS memory clear	J18	Pins 2 & 3 closed

## DIMM CONFIGURATION

Size	Bank 0	Bank 1
8MB	(1) 1M x 64	None

16MB	(1) 2M x 64	None
16MB	(1) 1M x 64	(1) 1M x 64
24MB	(1) 2M x 64	(1) 1M x 64
32MB	(1) 4M x 64	None
32MB	(1) 2M x 64	(1) 2M x 64
40MB	(1) 4M x 64	(1) 1M x 64
48MB	(1) 4M x 64	(1) 2M x 64
64MB	(1) 8M x 64	None
64MB	(1) 4M x 64	(1) 4M x 64
72MB	(1) 8M x 64	(1) 1M x 64

### DIMM CONFIGURATION (CON'T)

Size	Bank 0	Bank 1
80MB	(1) 8M x 64	(1) 2M x 64
96MB	(1) 8M x 64	(1) 4M x 64
128MB	(1) 16M x 64	None
128MB	(1) 8M x 64	(1) 8M x 64
136MB	(1) 16M x 64	(1) 1M x 64
144MB	(1) 16M x 64	(1) 2M x 64
160MB	(1) 16M x 64	(1) 4M x 64
192MB	(1) 16M x 64	(1) 8M x 64
256MB	(1) 16M x 64	(1) 16M x 64

Note: Board accepts SDRAM memory.

### VIDEO MEMORY CONFIGURATION

Note: The location of the video memory is unidentified.

PCI BUS SPEED SELECTION	
Speed	J2
30MHz	Pins 4 & 6 closed
33MHz	Pins 2 & 4 closed

CPU MULTIPLIER SELECTION			
Multiplier	J8/pins 1 & 2	J8/pins 3 & 4	J8/pins 5 & 6
4x	Closed	Closed	Closed
5x	Open	Open	Closed
6x	Closed	Open	Open
7x	Open	Closed	Open
8x	Open	Open	Open
9x	Open	Closed	Closed
10x	Closed	Open	Closed

CPU VOLTAGE SELECTION				
Voltage	JP1/pins 1 & 2	JP1/pins 3 & 4	JP1/pins 5 & 6	JP1/pins 7 & 8
Auto	Open	Open	Open	Open
2.1v	Closed	Open	Open	Open
2.2v	Open	Closed	Open	Open
2.3v	Closed	Closed	Open	Open
2.4v	Open	Open	Closed	Open
2.5v	Closed	Open	Closed	Open
2.6v	Open	Closed	Closed	Open
2.7v	Closed	Closed	Closed	Open

»	2.8v	Open	Open	Open	Closed
	2.9v	Closed	Open	Open	Closed
	3.0v	Open	Closed	Open	Closed
	3.1v	Closed	Closed	Open	Closed
	3.2v	Open	Open	Closed	Closed
	3.3v	Closed	Open	Closed	Closed
	3.4v	Open	Closed	Closed	Closed
	3.5v	Closed	Closed	Closed	Closed