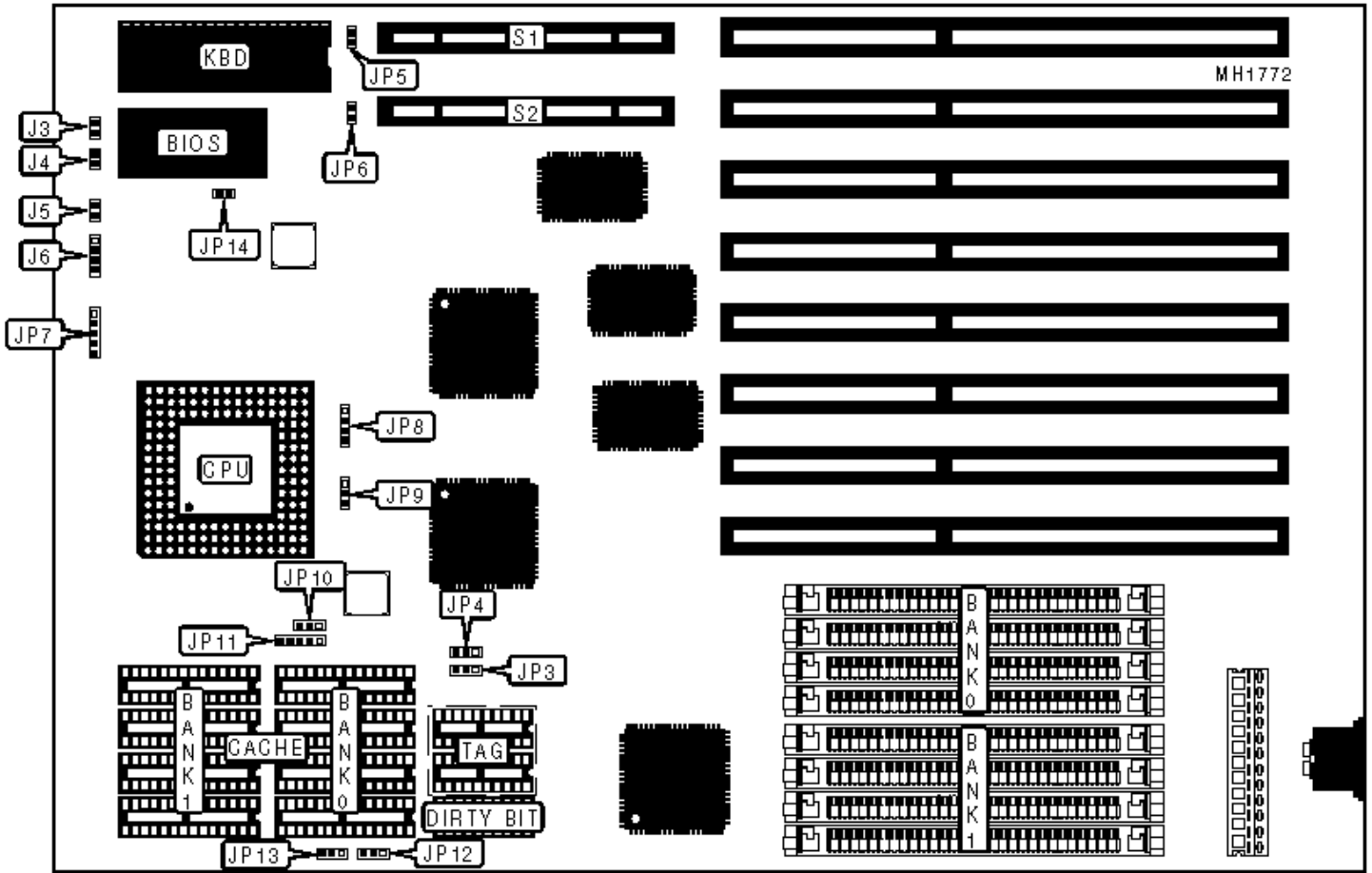


ELITEGROUP COMPUTER SYSTEMS, INC.

SL 486VE

Configuration



## CONNECTIONS

Purpose	Location	Purpose	Location
Turbo LED	J3	Speaker	J6
Turbo switch	J4	Power LED & keylock	JP7
Reset switch	J5	32-bit VESA Local bus slots	S1 & S2

## USER CONFIGURABLE SETTINGS

Function	Jumper	Position
» Monitor type select color	JP14	Open
Monitor type select monochrome	JP14	Closed

## DRAM CONFIGURATION

Size	Bank 0	Bank 1
4MB	(4) 1M x 9	NONE
8MB	(4) 1M x 9	(4) 1M x 9
16MB	(4) 4M x 9	NONE
20MB	(4) 1M x 9	(4) 4M x 9
128MB	(4) 16M x 9	(4) 16M x 9

## CACHE CONFIGURATION

Size	Max Cachable	Bank 0	Bank 1	TAG	Dirty Bit
64KB	16MB	(4) 8K x 8	(4) 8K x 8	(2) 16K x 4	(1) 16K x 4
128KB	32MB	(4) 32K x 8	NONE	(2) 16K x 4	(1) 16K x 4
256KB	64KB	(4) 32K x 8	(4) 32K x 8	(2) 16K x 4	(1) 16K x 4

## CACHE JUMPER CONFIGURATION

Size	JP3	JP4	JP10	JP11	JP12	JP13
64KB	pins 1 & 2	pins 1 & 2	pins 1 & 2	pins 2 & 3	pins 1 & 2	pins 1 & 2
128KB	pins 2 & 3	pins 1 & 2	pins 2 & 3	pins 1 & 2	pins 1 & 2	pins 2 & 3
256KB	pins 2 & 3	pins 2 & 3	pins 2 & 3	pins 4 & 5	pins 2 & 3	pins 2 & 3

Note: Pins designated should be in the closed position.

CPU TYPE CONFIGURATION		
Type	JP8	JP9
80486SX	pins 2 & 3 closed	Open
80486DX	pins 1 & 2 and 3 & 4 closed	pins 1 & 2 closed
ODP486SX	pins 1 & 2 and 3 & 4 closed	pins 2 & 3 closed
80486DX2	pins 1 & 2 and 3 & 4 closed	pins 1 & 2 closed

VESA WAIT STATE/BUS SPEED (ID2 & ID3) CONFIGURATION			
CPU speed	Wait states	JP5 (ID3)	JP6 (ID2)
£ 33MHz	0 wait states	Open	Open
> 33MHz	1 wait state	Closed	Closed