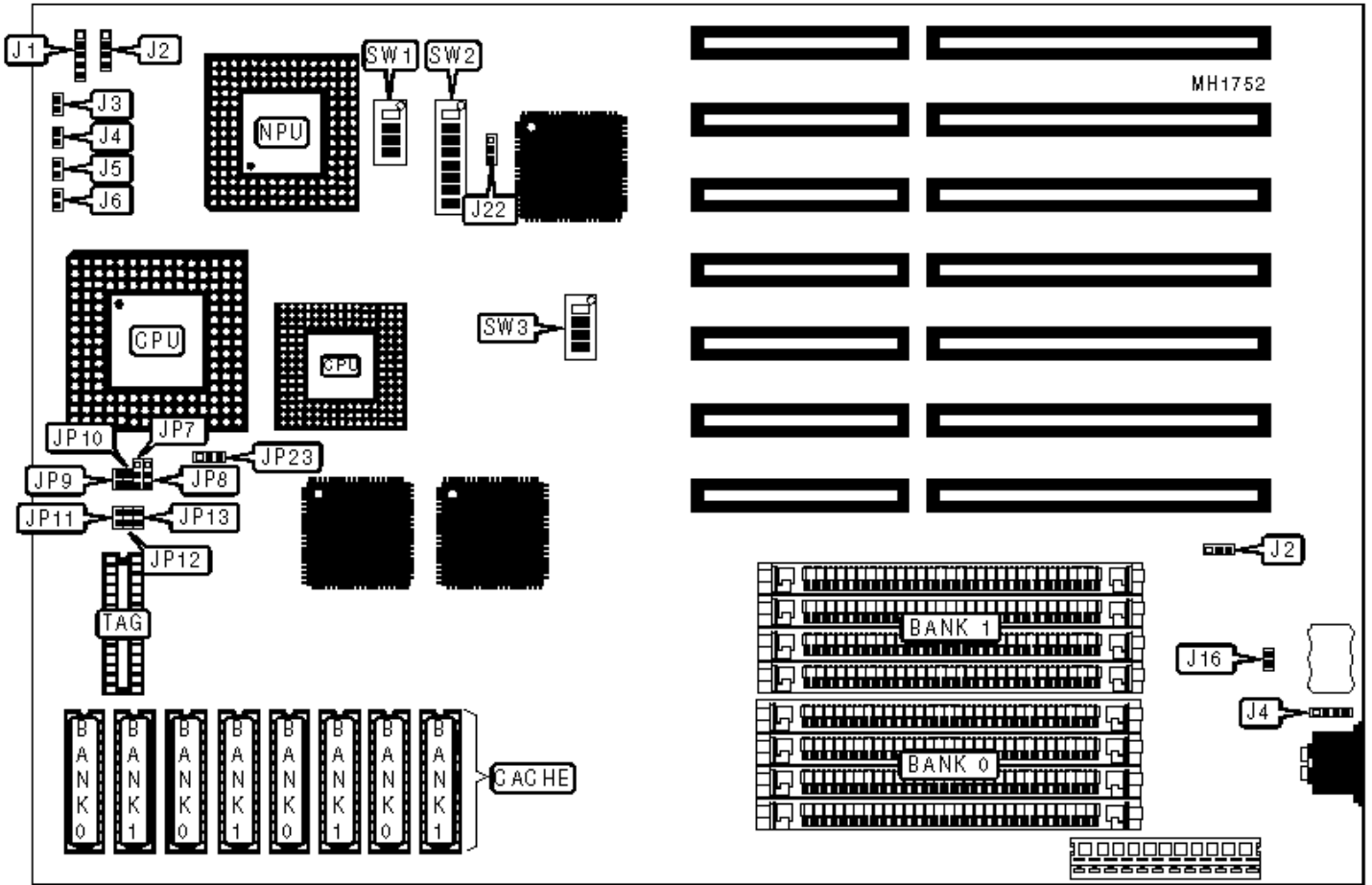


EFA CORPORATION

3486UC-L4-U3

Configuration



CONNECTIONS

Purpose	Location	Purpose	Location
Speaker	J2	Turbo LED	J16
External battery	J4	Power LED & keylock	J18
Reset switch	J15	Speaker	J19

USER CONFIGURABLE SETTINGS

Function	Jumper	Position
» Monitor type select color	J9	pins 2 & 3 closed
Monitor type select monochrome	J9	pins 1 & 2 closed
» Turbo switch enabled	J17	Open
Turbo switch normal operation	J17	Closed

DRAM CONFIGURATION

Size	Bank 0	Bank 1
1MB	(4) 256K x 9	NONE
2MB	(4) 256K x 9	(4) 256K x 9
4MB	(4) 1M x 9	NONE
5MB	(4) 256K x 9	(4) 1M x 9
8MB	(4) 1M x 9	(4) 1M x 9
16MB	(4) 4M x 9	NONE
20MB	(4) 1M x 9	(4) 4M x 9
32MB	(4) 4M x 9	(4) 4M x 9

CACHE CONFIGURATION

Size	Bank 0	Bank 1	TAG
------	--------	--------	-----

64KB	(4) 8K x 8	(4) 8K x 8	(1) 8K x 8
128KB	(4) 32K x 8	NONE	(1) 32K x 8
256KB	(4) 32K x 8	(4) 32K x 8	(1) 32K x 8

CACHE JUMPER CONFIGURATION

Size	J1	J2	J3	J13	J14
64KB	pins 2 & 3	pins 1 & 2	pins 1 & 2	pins 1 & 2	N/A
128KB	pins 2 & 3	pins 2 & 3	pins 1 & 2	pins 2 & 3	pins 1 & 2
256KB	pins 2 & 3	pins 2 & 3	pins 2 & 3	pins 1 & 2	pins 2 & 3

Note:Pins designated should be in the closed position.

CPU TYPE CONFIGURATION

Type	SW1/switch 1	SW1/switch 2	SW1/switch 3	SW1/switch 4
80386DX	On	On	Off	Off
80486SX	Off	Off	On	On
80486DX	On	On	Off	Off

CPU TYPE CONFIGURATION (CONT.)

Type	SW2/1	SW2/2	SW2/3	SW2/4	SW2/5	SW2/6	SW2/7	SW2/8
80386DX	On	On	On	On	Off	Off	On	On
80486SX	Off	Off	Off	Off	On	On	On	Off
80486DX	Off	Off	Off	Off	On	On	On	Off

CPU SPEED CONFIGURATION

Speed	SW3/switch 1	SW3/switch 2	SW3/switch 3	SW3/switch 4
16MHz	On	Off	On	On

20MHz	On	Off	On	Off
25MHz	On	Off	Off	Off
33MHz	On	Off	Off	On
40MHz	Off	On	Off	On
50i MHz	On	Off	Off	Off
50MHz	Off	On	Off	Off