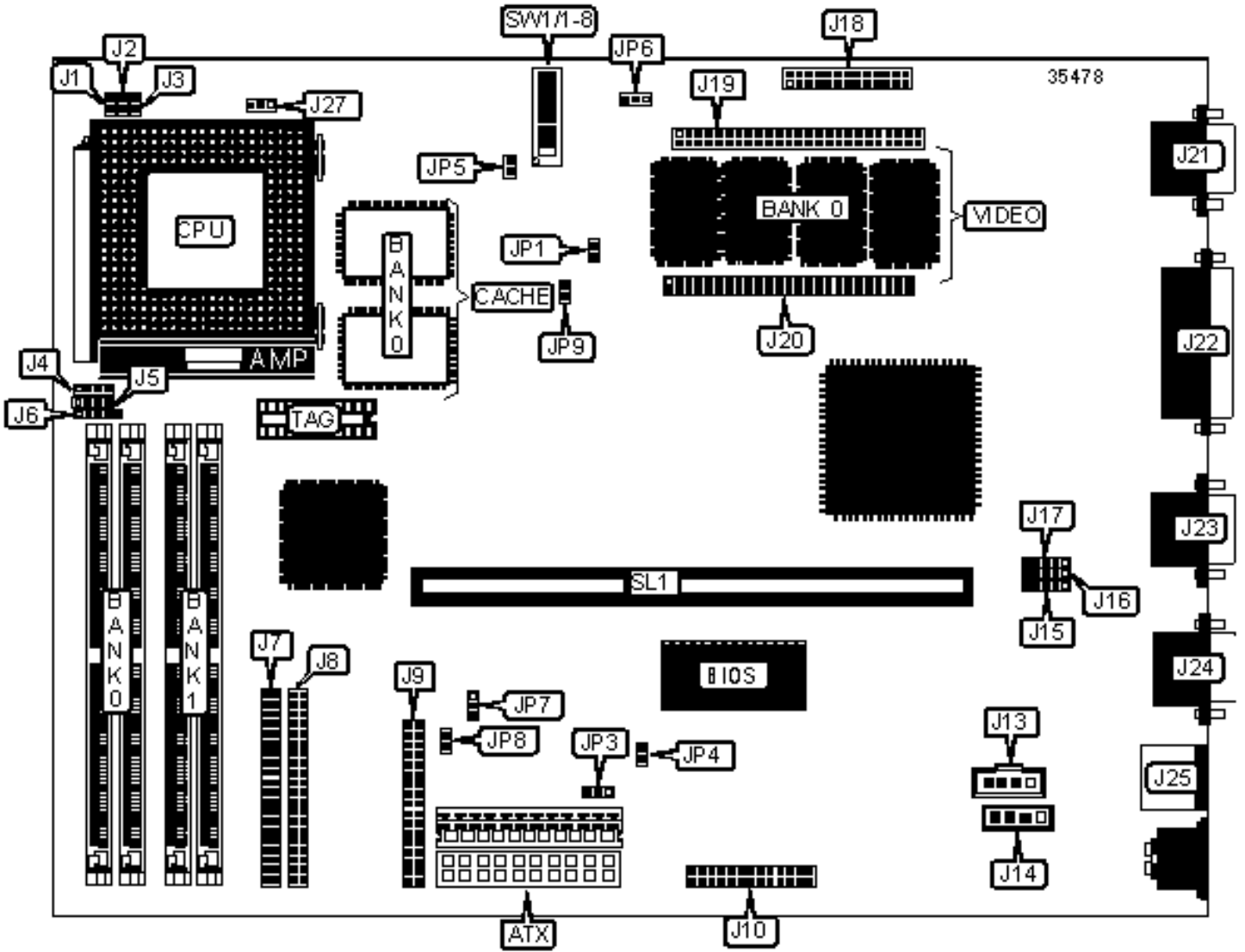


DTK COMPUTER, INC.

PAM-0066I (VER. 1.20)

Configuration



## CONNECTIONS

Purpose	Location	Purpose	Location
ATX power	ATX	IR connector	J15
Reset switch	J1	USB connector 1	J16
Green PC connector	J2	USB connector 2	J17
Green PC LED	J3	VGA feature connector	J18
Speaker	J4	Video memory expansion board connector	J19
IDE interface LED	J5	Video memory expansion board connector	J20
Power LED & keylock	J6	VGA port	J21
IDE interface 1	J7	Parallel port	J22
IDE interface 2	J8	Serial port 1	J23
Floppy drive interface	J9	Serial port 2	J24
Wavetable connector	J10	PS/2 mouse port	J25
Audio in - CD-ROM connector	J13	CPU fan power	J27
Audio in - CD-ROM connector	J14	32-bit EISA slot	SL1

## USER CONFIGURABLE SETTINGS

Function	Label	Position
VGA enabled	JP1	Closed
VGA disabled	JP1	Open
Flash BIOS voltage select 5v	JP3	Pins 2 & 3 closed
Flash BIOS voltage select 12v	JP3	Pins 1 & 2 closed
Audio enabled	JP4	Closed
Audio disabled	JP4	Open
» Factory configured - do not alter	JP6	Pins 2 & 3 closed
» CMOS memory normal operation	JP7	Pins 1 & 2 closed

	CMOS memory clear	JP7	Pins 2 & 3 closed
--	-------------------	-----	-------------------

<b>DRAM CONFIGURATION</b>		
<b>Size</b>	<b>Bank 0</b>	<b>Bank 1</b>
8MB	(2) 1MB x 36	None
16MB	(2) 1MB x 36	(2) 1MB x 36
16MB	(2) 2MB x 36	None
24MB	(2) 2MB x 36	(2) 1MB x 36
32MB	(2) 2MB x 36	(2) 2MB x 36
32MB	(2) 4MB x 36	None
40MB	(2) 4MB x 36	(2) 1MB x 36
48MB	(2) 4MB x 36	(2) 2MB x 36
64MB	(2) 4MB x 36	(2) 4MB x 36
64MB	(2) 8MB x 36	None
72MB	(2) 8MB x 36	(2) 1MB x 36
80MB	(2) 8MB x 36	(2) 2MB x 36
96MB	(2) 8MB x 36	(2) 4MB x 36
128MB	(2) 8MB x 36	(2) 8MB x 36
128MB	(2) 16MB x 36	None
136MB	(2) 16MB x 36	(2) 1MB x 36

<b>DRAM CONFIGURATION (CON'T)</b>		
<b>Size</b>	<b>Bank 0</b>	<b>Bank 1</b>
144MB	(2) 16MB x 36	(2) 2MB x 36
160MB	(2) 16MB x 36	(2) 4MB x 36
192MB	(2) 16MB x 36	(2) 8MB x 36

256MB	(2) 16MB x 36	(2) 16MB x 36
Note: Board supports Page and EDO memory.		

<b>VIDEO MEMORY CONFIGURATION</b>		
Size	Bank 0	J19/J20
2MB	2MB	None
4MB	2MB	2MB expansion board

<b>POWER SUPPLY SELECTION</b>		
Power supply	JP8	JP9
AT power	Closed	Open
ATX power	Open	Closed

<b>CPU SPEED SELECTION (INTEL)</b>								
Speed	Clock speed	Multiplier	SW1/3	SW1/4	SW1/5	SW1/6	SW1/7	SW1/8
90MHz	60MHz	1.5x	Off	Off	Off	On	Off	Off
100MHz	66MHz	1.5x	Off	Off	Off	Off	On	Off
120MHz	60MHz	2x	On	Off	Off	On	Off	Off
133MHz	66MHz	2x	On	Off	Off	Off	On	Off
166MHz	66MHz	2.5x	On	On	Off	Off	On	Off
200MHz	66MHz	3x	Off	On	Off	Off	On	Off

<b>CPU SPEED SELECTION (INTEL MMX)</b>								
Speed	Clock speed	Multiplier	SW1/3	SW1/4	SW1/5	SW1/6	SW1/7	SW1/8
166MHz	66MHz	2.5x	On	On	Off	Off	On	Off
200MHz	66MHz	3x	Off	On	Off	Off	On	Off

233MHz	66MHz	3.5x	Off	Off	Off	Off	On	Off
--------	-------	------	-----	-----	-----	-----	----	-----

### CPU SPEED SELECTION (CX 6X86L)

Speed	Clock speed	Multiplier	SW1/3	SW1/4	SW1/5	SW1/6	SW1/7	SW1/8
150MHz	60MHz	2x	On	Off	Off	On	Off	Off
166MHz	66MHz	2x	On	Off	Off	Off	On	Off
200MHz	75MHz	2x	On	Off	Off	Off	Off	On

### CPU SPEED SELECTION (CX 6X86MX)

Speed	Clock speed	Multiplier	SW1/3	SW1/4	SW1/5	SW1/6	SW1/7	SW1/8
166MHz	60MHz	2.5x	On	On	Off	On	Off	Off
200MHz	75MHz	2x	On	Off	Off	Off	Off	On

### CPU SPEED SELECTION (AM K5)

Speed	Clock speed	Multiplier	SW1/3	SW1/4	SW1/5	SW1/6	SW1/7	SW1/8
120MHz	60MHz	2x	On	Off	Off	On	Off	Off
133MHz	66MHz	2x	On	Off	Off	Off	On	Off
166MHz	66MHz	2.5x	On	On	Off	Off	On	Off

### CPU SPEED SELECTION (AM K6)

Speed	Clock speed	Multiplier	SW1/3	SW1/4	SW1/5	SW1/6	SW1/7	SW1/8
166MHz	66MHz	2.5x	On	On	Off	Off	On	Off
200MHz	66MHz	3x	Off	On	Off	Off	On	Off
233MHz	66MHz	3.5x	Off	Off	Off	Off	On	Off
266MHz	66MHz	4x	On	Off	On	Off	On	Off

## CPU VOLTAGE SELECTION

Voltage	SW1/1	SW1/2	JP5
Auto	Off	Off	Open
2.8V	Off	Off	Closed
2.9V	On	Off	Closed
3.2V	Off	Off	Open
3.3V	Off	On	Open
3.5V	On	On	Closed