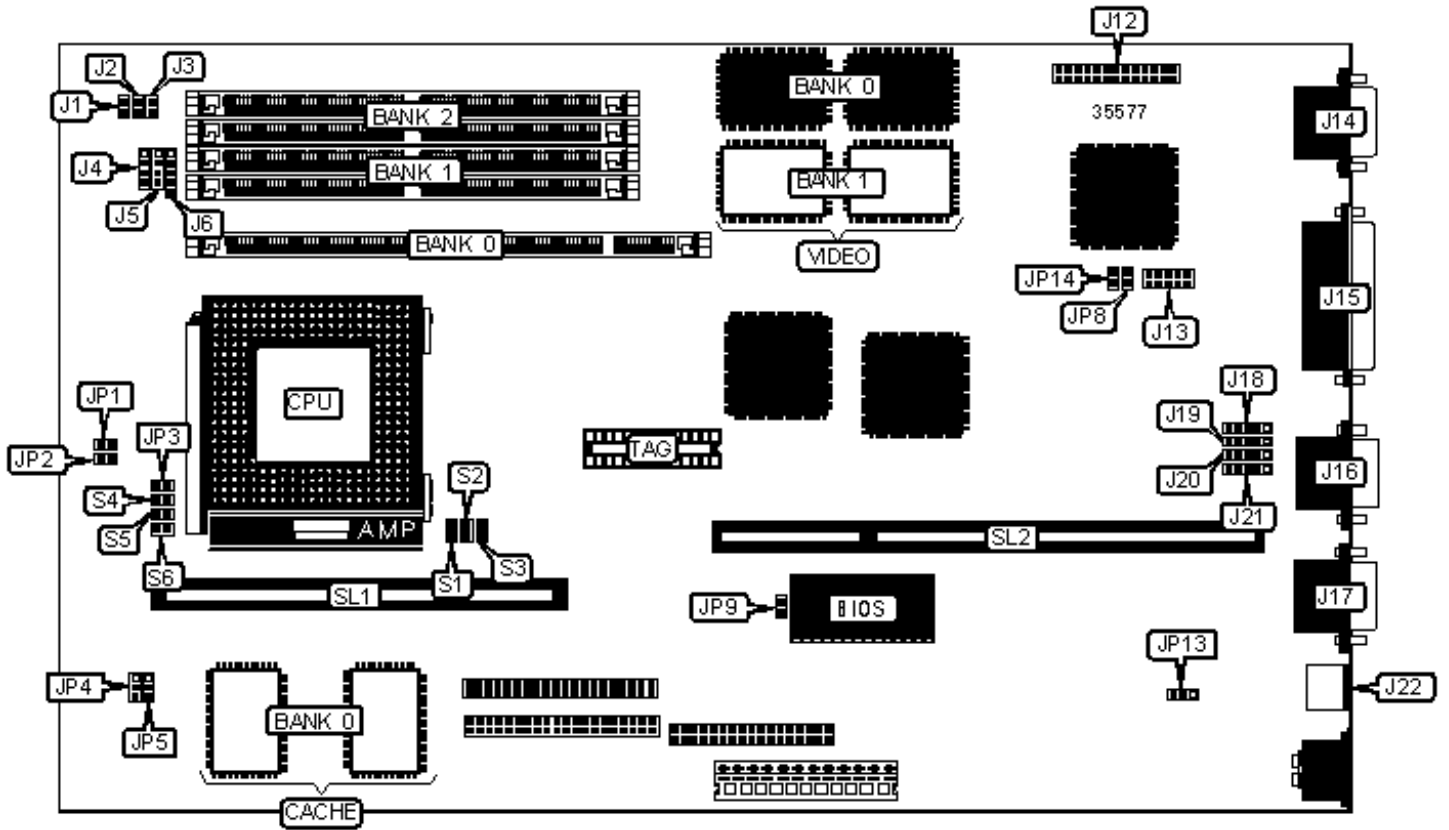


DTK COMPUTER, INC.

PAM-0065I (VER. 1.01)

Configuration



CONNECTIONS

Purpose	Location	Purpose	Location
Reset switch	J1	VGA port	J14
SMI switch	J2	Parallel port	J15
Green PC LED	J3	Serial port 1	J16
Speaker	J4	Serial port 2	J17
IDE interface LED	J5	USB connector 1	J18
Power LED	J6	USB connector 2	J19
IDE interface 1	J7	Fast IR connector	J20
IDE interface 2	J8	IR connector	J21
Floppy drive interface	J9	PS/2 mouse port	J22
VGA feature connector	J12	Cache slot	SL1
S3 module upgrade connector	J13	Riser slot	SL2

USER CONFIGURABLE SETTINGS

Function	Label	Position
» Factory configured - do not alter	JP1	Unidentified
» Factory configured - do not alter	JP2	Unidentified
» S3 MPEG module normal	JP8	Open
S3 MPEG module installed on J13	JP8	Closed
» CMOS normal operation	JP9	Open
CMOS clear	JP9	Closed
Flash BIOS voltage select 5v	JP13	Pins 2 & 3 closed
Flash BIOS voltage select 12V	JP13	Pins 1 & 2 closed
On board video enabled	JP14	Closed
On board video disabled	JP14	Open

SIMM CONFIGURATION

Size	Bank 0	Bank 1
8MB	(2) 1M x 36	None
16MB	(2) 2M x 36	None
16MB	(2) 1M x 36	(2) 1M x 36
24MB	(2) 2M x 36	(2) 1M x 36
32MB	(2) 4M x 36	None
32MB	(2) 2M x 36	(2) 2M x 36
40MB	(2) 4M x 36	(2) 1M x 36
48MB	(2) 4M x 36	(2) 2M x 36
64MB	(2) 8M x 36	None
64MB	(2) 4M x 36	(2) 4M x 36
72MB	(2) 8M x 36	(2) 1M x 36
80MB	(2) 8M x 36	(2) 2M x 36
96MB	(2) 8M x 36	(2) 4M x 36
128MB	(2) 8M x 36	(2) 8M x 36

DIMM CONFIGURATION

Size	Bank 0	Bank 1
8MB	(1) 1M x 64	None
16MB	(1) 2M x 64	None
16MB	(1) 1M x 64	(1) 1M x 64
24MB	(1) 2M x 64	(1) 1M x 64
32MB	(1) 4M x 64	None
32MB	(1) 2M x 64	(1) 2M x 64

40MB	(1) 4M x 64	(1) 1M x 64
48MB	(1) 4M x 64	(1) 2M x 64
64MB	(1) 8M x 64	None
64MB	(1) 4M x 64	(1) 4M x 64
72MB	(1) 8M x 64	(1) 1M x 64
80MB	(1) 8M x 64	(1) 2M x 64
96MB	(1) 8M x 64	(1) 4M x 64
128MB	(1) 8M x 64	(1) 8M x 64

CACHE CONFIGURATION			
Size	Bank 0	SL1	TAG
256KB	(2) 32K x 32	None installed	8/16/32KB x 8
512KB	(2) 64K x 32	256KB module installed	8/16/32KB x 8

VIDEO MEMORY CONFIGURATION		
Size	Bank 0	Bank 1
1MB	(2) 256KB x 16	None
2MB	(2) 256KB x 16	(2) 256KB x 16

CPU SPEED SELECTION (INTEL)							
CPU speed	Clock speed	Multiplier	JP4	JP5	S1	S2	S3
75MHz	50MHz	1.5x	1 & 2	1 & 2	Closed	Closed	Open
90MHz	60MHz	1.5x	1 & 2	1 & 2	Closed	Open	Open
100MHz	66MHz	1.5x	1 & 2	1 & 2	Open	Open	Open
120MHz	60MHz	2x	1 & 2	2 & 3	Closed	Open	Open
133MHz	66MHz	2x	1 & 2	2 & 3	Open	Open	Open

150MHz	60MHz	2.5x	2 & 3	2 & 3	Closed	Open	Open
166MHz	66MHz	2.5x	2 & 3	2 & 3	Open	Open	Open
180MHz	60MHz	3x	2 & 3	1 & 2	Closed	Open	Open
200MHz	66MHz	3x	2 & 3	1 & 2	Open	Open	Open

Note: Pins designated are in the closed position.

CPU SPEED SELECTION (INTEL MMX)

CPU speed	Clock speed	Multiplier	JP4	JP5	S1	S2	S3
166MHz	66MHz	2.5x	2 & 3	2 & 3	Open	Open	Open
180MHz	60MHz	3x	2 & 3	1 & 2	Closed	Open	Open
200MHz	66MHz	3x	2 & 3	1 & 2	Open	Open	Open

Note: Pins designated are in the closed position.

CPU SPEED SELECTION (CX 6X86)

CPU speed	Clock speed	Multiplier	JP4	JP5	S1	S2	S3
120MHz	50MHz	2x	1 & 2	2 & 3	Closed	Closed	Open
133MHz	55MHz	2x	1 & 2	2 & 3	Open	Closed	Open
150MHz	60MHz	2x	1 & 2	2 & 3	Closed	Open	Open
166MHz	66MHz	2x	1 & 2	2 & 3	Open	Open	Open
200MHz	75MHz	2x	1 & 2	2 & 3	Open	Open	Closed

Note: Pins designated are in the closed position.

CPU SPEED SELECTION (AM K5)

CPU speed	Clock speed	Multiplier	JP4	JP5	S1	S2	S3
75MHz	50MHz	1.5x	1 & 2	1 & 2	Closed	Closed	Open
90MHz	60MHz	1.5x	1 & 2	1 & 2	Closed	Open	Open

100MHz	66MHz	1.5x	1 & 2	1 & 2	Open	Open	Open
120MHz	60MHz	1.5x	1 & 2	2 & 3	Closed	Open	Open
133MHz	66MHz	2x	1 & 2	1 & 2	Open	Open	Open
150MHz	60MHz	2.5x	1 & 2	2 & 3	Closed	Open	Open
166MHz	66MHz	2.5x	1 & 2	2 & 3	Open	Open	Open
180MHz	60MHz	3x	2 & 3	1 & 2	Closed	Open	Open
200MHz	66MHz	3x	2 & 3	1 & 2	Open	Open	Open

Note: Pins designated are in the closed position.

CPU SPEED SELECTION (INTEL WITH PLL52C61-01 CLOCK GENERATOR)

CPU speed	Clock speed	Multiplier	JP4	JP5	S1	S2	S3
75MHz	50MHz	1.5x	1 & 2	1 & 2	Closed	Closed	Closed
90MHz	60MHz	1.5x	1 & 2	1 & 2	Closed	Open	Open
100MHz	66MHz	1.5x	1 & 2	1 & 2	Open	Open	Open
120MHz	60MHz	2x	1 & 2	2 & 3	Closed	Open	Open
133MHz	66MHz	2x	1 & 2	2 & 3	Open	Open	Open
150MHz	60MHz	2.5x	2 & 3	2 & 3	Closed	Open	Open
166MHz	66MHz	2.5x	2 & 3	2 & 3	Open	Open	Open
180MHz	60MHz	3x	2 & 3	1 & 2	Closed	Open	Open
200MHz	66MHz	3x	2 & 3	1 & 2	Open	Open	Open

Note: Pins designated are in the closed position.

CPU SPEED SELECTION (INTEL MMX WITH PLL52C61-01 CLOCK GENERATOR)

CPU speed	Clock speed	Multiplier	JP4	JP5	S1	S2	S3
166MHz	66MHz	2.5x	2 & 3	2 & 3	Open	Open	Open
180MHz	60MHz	3x	2 & 3	1 & 2	Closed	Open	Open

200MHz	66MHz	3x	2 & 3	1 & 2	Open	Open	Open
--------	-------	----	-------	-------	------	------	------

Note: Pins designated are in the closed position.

CPU SPEED SELECTION (CX 6X86 WITH PLL52C61-01 CLOCK GENERATOR)

CPU speed	Clock speed	Multiplier	JP4	JP5	S1	S2	S3
120MHz	50MHz	2x	1 & 2	2 & 3	Closed	Closed	Closed
133MHz	55MHz	2x	1 & 2	2 & 3	Closed	Closed	Open
150MHz	60MHz	2x	1 & 2	2 & 3	Closed	Open	Open
166MHz	66MHz	2x	1 & 2	2 & 3	Open	Open	Open
200MHz	75MHz	2x	1 & 2	2 & 3	Open	Closed	Open

Note: Pins designated are in the closed position.

CPU SPEED SELECTION (AM K5 WITH PLL52C61-01 CLOCK GENERATOR)

CPU speed	Clock speed	Multiplier	JP4	JP5	S1	S2	S3
75MHz	50MHz	1.5x	1 & 2	1 & 2	Closed	Closed	Closed
90MHz	60MHz	1.5x	1 & 2	1 & 2	Closed	Open	Open
100MHz	66MHz	1.5x	1 & 2	1 & 2	Open	Open	Open
120MHz	60MHz	2x	1 & 2	1 & 2	Closed	Open	Open
133MHz	66MHz	2x	1 & 2	1 & 2	Open	Open	Open
150MHz	60MHz	2.5x	1 & 2	2 & 3	Closed	Open	Open
166MHz	66MHz	2.5x	1 & 2	2 & 3	Open	Open	Open

Note: Pins designated are in the closed position.

CPU VOLTAGE SELECTION (SINGLE)

Voltage	JP3	S4	S5	S6
3.4V	Closed	Closed	Closed	Closed

3.5V	Open	Closed	Closed	Closed
------	------	--------	--------	--------

CPU VOLTAGE SELECTION (DUAL)					
V Core	V I/O	JP3	S4	S5	S6
2.9V	3.4V	Closed	Open	Open	Open