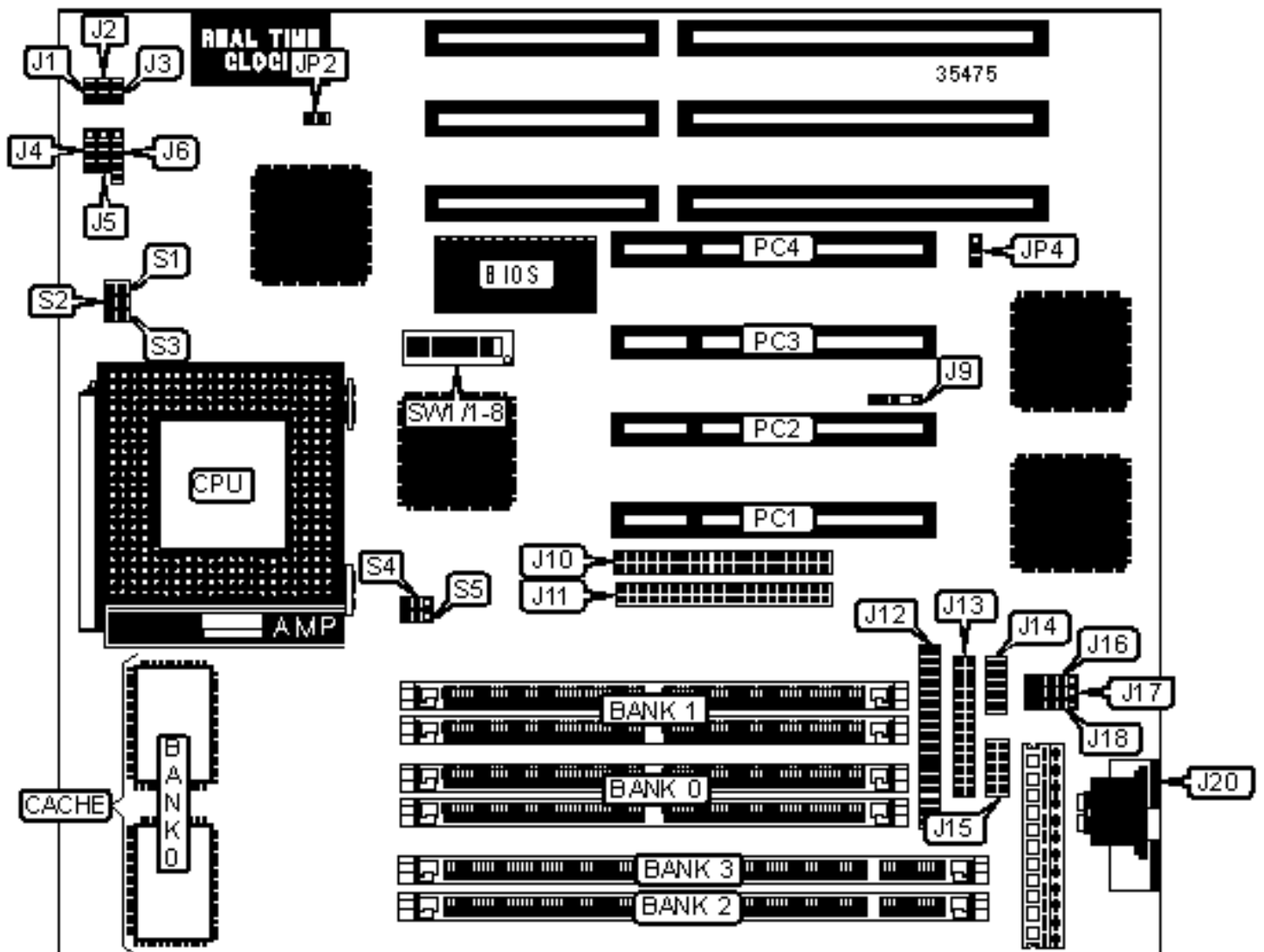


DTK COMPUTER, INC.

PAM-0056I (VER. 5.02)

Configuration



CONNECTIONS

Purpose	Location	Purpose	Location
Reset switch	J1	Floppy drive interface	J12
Green PC connector	J2	Parallel port	J13
Green PC LED	J3	Serial port 1	J14
Speaker	J4	Serial port 2	J15
IDE interface LED	J5	USB connector 1	J16
Power LED & keylock	J6	USB connector 2	J17
IR connector	J9	PS/2 mouse interface	J18
IDE interface 1	J10	PS/2 mouse port	J20
IDE interface 2	J11	32-bit PCI slots	PC1 - PC4

USER CONFIGURABLE SETTINGS

Function	Label	Position
» CMOS memory normal operation	JP2	Open
CMOS memory clear	JP2	Closed
Flash BIOS voltage select 5v	JP4	Pins 2 & 3 closed
Flash BIOS voltage select 12v	JP4	Pins 1 & 2 closed

SIMM MEMORY CONFIGURATION

Size	Bank 0	Bank 1
8MB	(2) 1MB x 36	None
16MB	(2) 1MB x 36	(2) 1MB x 36
16MB	(2) 2MB x 36	None
24MB	(2) 2MB x 36	(2) 1MB x 36
32MB	(2) 2MB x 36	(2) 2MB x 36

32MB	(2) 4MB x 36	None
40MB	(2) 4MB x 36	(2) 1MB x 36
48MB	(2) 4MB x 36	(2) 2MB x 36
64MB	(2) 4MB x 36	(2) 4MB x 36
64MB	(2) 8MB x 36	None
72MB	(2) 8MB x 36	(2) 1MB x 36
80MB	(2) 8MB x 36	(2) 2MB x 36
96MB	(2) 8MB x 36	(2) 4MB x 36
128MB	(2) 8MB x 36	(2) 8MB x 36

DIMM MEMORY CONFIGURATION

Size	Bank 2	Bank 3
8MB	(1) 1MB x 64	None
16MB	(1) 1MB x 64	(1) 1MB x 64
16MB	(1) 2MB x 64	None
24MB	(1) 2MB x 64	(1) 1MB x 64
32MB	(1) 2MB x 64	(1) 2MB x 64
32MB	(1) 4MB x 64	None
40MB	(1) 4MB x 64	(1) 1MB x 64
48MB	(1) 4MB x 64	(1) 2MB x 64
64MB	(1) 4MB x 64	(1) 4MB x 64
64MB	(1) 8MB x 64	None
72MB	(1) 8MB x 64	(1) 1MB x 64
80MB	(1) 8MB x 64	(1) 2MB x 64
96MB	(1) 8MB x 64	(1) 4MB x 64
128MB	(1) 8MB x 64	(1) 8MB x 64

DRAM VOLTAGE SELECTION

Voltage	S4	S5
5V SIMM	Pins 1 & 2 closed	Pins 1 & 2 closed
3.3V SIMM	Pins 2 & 3 closed	Pins 2 & 3 closed

CACHE CONFIGURATION

Size	Bank 0	TAG
256KB	(2) 32K x 32	16K x 8 or 32K x 8
512KB	(2) 64K x 32	16K x 8 or 32K x 8

CPU SPEED SELECTION (INTEL)

Speed	Clock speed	Multiplier	SW1/4	SW1/5	SW1/6	SW1/7	SW1/8
75MHz	50MHz	1.5x	Off	Off	On	On	Off
90MHz	60MHz	1.5x	Off	Off	On	Off	Off
100MHz	66MHz	1.5x	Off	Off	Off	Off	Off
120MHz	60MHz	2x	On	Off	On	Off	Off
133MHz	66MHz	2x	On	Off	Off	Off	Off
150MHz	60MHz	2.5x	On	On	On	Off	Off
166MHz	66MHz	2.5x	On	On	Off	Off	Off
200MHz	66MHz	3x	Off	On	Off	Off	Off

CPU SPEED SELECTION (INTEL MMX)

Speed	Clock speed	Multiplier	SW1/4	SW1/5	SW1/6	SW1/7	SW1/8
166MHz	66MHz	2.5x	On	On	Off	Off	Off
200MHz	66MHz	3x	Off	On	Off	Off	Off

233MHz	66MHz	3.5x	Off	Off	Off	Off	Off
--------	-------	------	-----	-----	-----	-----	-----

CPU SPEED SELECTION (CX 6X86)

Speed	Clock speed	Multiplier	SW1/4	SW1/5	SW1/6	SW1/7	SW1/8
120MHz	50MHz	2x	On	Off	On	On	Off
133MHz	55MHz	2x	On	Off	Off	On	Off
150MHz	60MHz	2x	On	Off	On	Off	Off
166MHz	66MHz	2x	On	Off	Off	Off	Off
200MHz	75MHz	2x	On	Off	Off	Off	On

CPU SPEED SELECTION (AM K5)

Speed	Clock speed	Multiplier	SW1/4	SW1/5	SW1/6	SW1/7	SW1/8
75MHz	50MHz	1.5x	Off	Off	On	On	Off
90MHz	60MHz	1.5x	Off	Off	On	Off	Off
100MHz	66MHz	1.5x	Off	Off	Off	Off	Off
120MHz	60MHz	2x	Off	Off	On	Off	Off
133MHz	66MHz	2x	On	Off	Off	Off	Off
150MHz	60MHz	2.5x	Off	Off	Off	Off	Off
166MHz	66MHz	2.5x	On	On	Off	Off	Off

CPU SPEED SELECTION (AMD K6)

Speed	Clock speed	Multiplier	SW1/4	SW1/5	SW1/6	SW1/7	SW1/8
166MHz	66MHz	2.5x	On	On	Off	Off	Off
200MHz	66MHz	3x	Off	On	Off	Off	Off
233MHz	66MHz	3.5x	Off	Off	Off	Off	Off

CPU VOLTAGE SELECTION (SINGLE)

Voltage	S1	S2	S3	SW1/1	SW1/2	SW1/3
3.3V	Closed	Closed	Closed	Off	Off	On
3.5V	Closed	Closed	Closed	Off	Off	Off

CPU VOLTAGE SELECTION (DUAL)

V I/O	V core	S1	S2	S3	SW1/1	SW1/2	SW1/3
3.3V	2.8V	Open	Open	Open	On	Off	On
3.3V	2.9V	Open	Open	Open	Off	On	On
3.3V	3.2V	Open	Open	Open	Off	Off	On