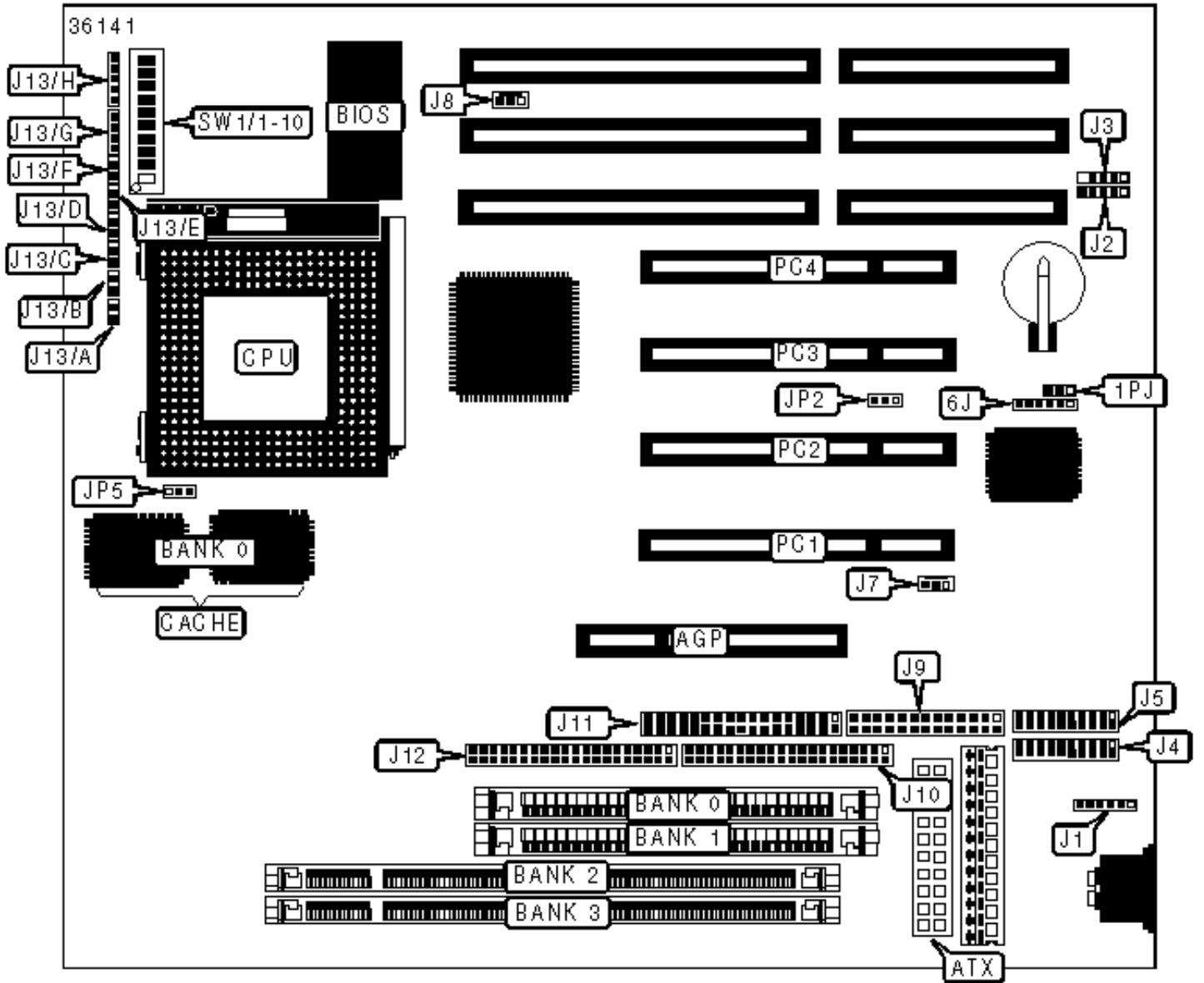


DIAMOND FLOWER, INC.

P5BV3 (REV.A+)

Configuration



CONNECTIONS

| Purpose | Location | Purpose | Location |
|----------------------|----------|------------------------|-----------|
| AGP slot | AGP | Floppy drive interface | J11 |
| ATX power connector | ATX | IDE interface 1 | J12 |
| PS/2 mouse interface | J1 | ATX power LED | J13/A |
| USB connector 1 | J2 | ATX power switch | J13/B |
| USB connector 2 | J3 | IDE interface LED | J13/C |
| Serial port 1 | J4 | Green PC LED | J13/D |
| Serial port 2 | J5 | Green switch | J13/E |
| IR connector | J6 | Reset switch | J13/F |
| AGP fan power | J7 | Speaker | J13/G |
| CPU fan power | J8 | Power LED & keylock | J13/H |
| Parallel port | J9 | 32-bit PCI slots | PC1 - PC4 |
| IDE interface 2 | J10 | | |

USER CONFIGURABLE SETTINGS

| Function | Label | Position |
|--------------------------------|-------|-------------------|
| » CMOS memory normal operation | JP1 | Pins 2 & 3 closed |
| CMOS memory clear | JP1 | Pins 1 & 2 closed |
| » AT power on | JP2 | Pins 2 & 3 closed |
| ATX power on | JP2 | Pins 1 & 2 closed |

SIMM CONFIGURATION

| Size | Bank 0 | Bank 1 |
|------|-------------|--------|
| 8MB | (2) 1M x 36 | None |
| 16MB | (2) 2M x 36 | None |

| | | |
|-------|-------------|-------------|
| 16MB | (2) 1M x 36 | (2) 1M x 36 |
| 24MB | (2) 2M x 36 | (2) 1M x 36 |
| 32MB | (2) 4M x 36 | None |
| 32MB | (2) 2M x 36 | (2) 2M x 36 |
| 40MB | (2) 4M x 36 | (2) 1M x 36 |
| 48MB | (2) 4M x 36 | (2) 2M x 36 |
| 64MB | (2) 8M x 36 | None |
| 64MB | (2) 4M x 36 | (2) 4M x 36 |
| 72MB | (2) 8M x 36 | (2) 1M x 36 |
| 80MB | (2) 8M x 36 | (2) 2M x 36 |
| 96MB | (2) 8M x 36 | (2) 4M x 36 |
| 128MB | (2) 8M x 36 | (2) 8M x 36 |

| DIMM CONFIGURATION | | |
|---------------------------|---------------|---------------|
| Size | Bank 0 | Bank 1 |
| 8MB | (1) 1M x 64 | None |
| 16MB | (1) 2M x 64 | None |
| 16MB | (1) 1M x 64 | (1) 1M x 64 |
| 24MB | (1) 2M x 64 | (1) 1M x 64 |
| 32MB | (1) 4M x 64 | None |
| 32MB | (1) 2M x 64 | (1) 2M x 64 |
| 40MB | (1) 4M x 64 | (1) 1M x 64 |
| 48MB | (1) 4M x 64 | (1) 2M x 64 |

| DIMM CONFIGURATION (CON'T) | | |
|-----------------------------------|---------------|---------------|
| Size | Bank 0 | Bank 1 |

| | | |
|-------|-------------|-------------|
| 64MB | (1) 8M x 64 | None |
| 64MB | (1) 4M x 64 | (1) 4M x 64 |
| 72MB | (1) 8M x 64 | (1) 1M x 64 |
| 80MB | (1) 8M x 64 | (1) 2M x 64 |
| 96MB | (1) 8M x 64 | (1) 4M x 64 |
| 128MB | (1) 8M x 64 | (1) 8M x 64 |

| CACHE CONFIGURATION | |
|---|--------------|
| Size | Bank 0 |
| 512KB | (1) 64K x 64 |
| Note: The location of Bank 0 is unidentified. | |

| CPU SPEED SELECTION (INTEL) | | | | | | | | |
|-----------------------------|-------------|------------|-------|-------|-------|-------|-------|-------|
| CPU speed | Clock speed | Multiplier | SW1/1 | SW1/2 | SW1/3 | SW1/4 | SW1/5 | SW1/6 |
| 90MHz | 60MHz | 1.5x | On | On | On | Off | Off | Off |
| 100MHz | 66MHz | 1.5x | Off | On | On | Off | Off | Off |
| 120MHz | 60MHz | 2x | On | On | On | On | Off | Off |
| 133MHz | 66MHz | 2x | Off | On | On | On | Off | Off |
| 150MHz | 60MHz | 2.5x | On | On | On | On | On | Off |
| 166MHz | 66MHz | 2.5x | Off | On | On | On | On | Off |
| 200MHz | 66MHz | 3x | Off | On | On | Off | On | Off |

| CPU SPEED SELECTION (INTEL MMX) | | | | | | | | |
|---------------------------------|-------------|------------|-------|-------|-------|-------|-------|-------|
| CPU speed | Clock speed | Multiplier | SW1/1 | SW1/2 | SW1/3 | SW1/4 | SW1/5 | SW1/6 |
| 166MHz | 66MHz | 2.5x | Off | On | On | On | On | Off |
| 200MHz | 66MHz | 3x | Off | On | On | Off | On | Off |

| | | | | | | | | |
|--------|-------|------|-----|----|----|-----|-----|-----|
| 233MHz | 66MHz | 3.5x | Off | On | On | Off | Off | Off |
|--------|-------|------|-----|----|----|-----|-----|-----|

CPU SPEED SELECTION (CX 6X86 MX)

| CPU speed | Clock speed | Multiplier | SW1/1 | SW1/2 | SW1/3 | SW1/4 | SW1/5 | SW1/6 |
|-----------|-------------|------------|-------|-------|-------|-------|-------|-------|
| 166MHz | 60MHz | 2.5x | On | On | On | On | On | Off |
| 200MHz | 66MHz | 2.5x | Off | On | On | On | On | Off |
| 233MHz | 75MHz | 2.5x | Off | Off | On | On | On | Off |

CPU SPEED SELECTION (CX 6X86L)

| CPU speed | Clock speed | Multiplier | SW1/1 | SW1/2 | SW1/3 | SW1/4 | SW1/5 | SW1/6 |
|-----------|-------------|------------|-------|-------|-------|-------|-------|-------|
| 150MHz | 60MHz | 2x | On | On | On | On | Off | Off |
| 166MHz | 66MHz | 2x | Off | On | On | On | Off | Off |
| 200MHz | 75MHz | 2x | Off | Off | On | On | Off | Off |

CPU SPEED SELECTION (AM K5)

| CPU speed | Clock speed | Multiplier | SW1/1 | SW1/2 | SW1/3 | SW1/4 | SW1/5 | SW1/6 |
|-----------|-------------|------------|-------|-------|-------|-------|-------|-------|
| 90MHz | 60MHz | 1.5x | On | On | On | Off | Off | Off |
| 100MHz | 66MHz | 1.5x | Off | On | On | Off | Off | Off |
| 120MHz | 60MHz | 1.5X | On | On | On | Off | Off | Off |
| 133MHz | 66MHz | 1.5x | Off | On | On | Off | Off | Off |
| 166MHz | 66MHz | 2.5x | Off | On | On | On | On | Off |

CPU SPEED SELECTION (AM K6)

| CPU speed | Clock speed | Multiplier | SW1/1 | SW1/2 | SW1/3 | SW1/4 | SW1/5 | SW1/6 |
|-----------|-------------|------------|-------|-------|-------|-------|-------|-------|
| 166MHz | 66MHz | 2.5x | Off | On | On | On | On | Off |
| 200MHz | 66MHz | 3x | Off | On | On | Off | On | Off |

| | | | | | | | | |
|--------|-------|------|-----|----|----|-----|-----|-----|
| 233MHz | 66MHz | 3.5x | Off | On | On | Off | Off | Off |
| 266MHz | 66MHz | 4x | Off | On | On | On | Off | On |
| 300MHz | 66MHz | 4.5x | Off | On | On | On | On | On |

CPU SPEED SELECTION (IDT C6)

| CPU speed | Clock speed | Multiplier | SW1/1 | SW1/2 | SW1/3 | SW1/4 | SW1/5 | SW1/6 |
|-----------|-------------|------------|-------|-------|-------|-------|-------|-------|
| 180MHz | 60MHz | 3x | On | On | On | Off | On | Off |
| 200MHz | 66MHz | 3x | Off | On | On | Off | On | Off |
| 225MHz | 75MHz | 3x | Off | Off | On | Off | On | Off |

CPU VOLTAGE SELECTION (DUAL)

| Voltage | JP5 | SW1/7 | SW1/8 | SW1/9 | SW1/10 |
|---------|-------------------|-------|-------|-------|--------|
| 2.1v | Pins 1 & 2 closed | On | Off | Off | Off |
| 2.2v | Pins 1 & 2 closed | Off | On | Off | Off |
| 2.8v | Pins 1 & 2 closed | Off | Off | Off | On |
| 2.9v | Pins 1 & 2 closed | On | Off | Off | On |
| 3.2v | Pins 1 & 2 closed | Off | Off | On | On |
| 3.3v | Pins 2 & 3 closed | On | Off | On | On |
| 3.5v | Pins 2 & 3 closed | On | On | On | On |