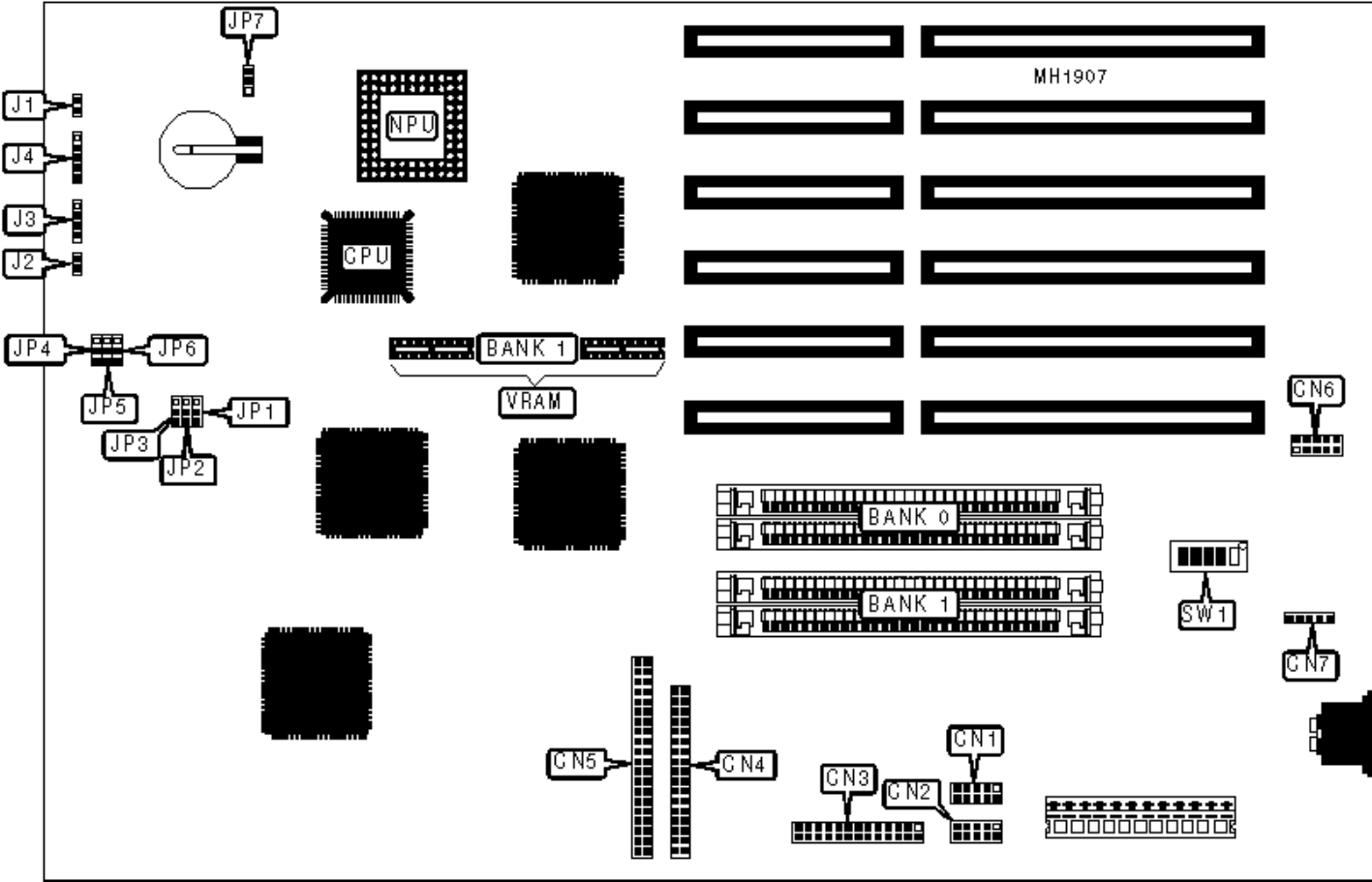


DELL COMPUTER CORPORATION

SYSTEM V386SX/XX REVISION 1

Configuration



## CONNECTIONS

Purpose	Location	Purpose	Location
IDE interface LED	J1	Parallel port	CN3
Reset switch	J2	Floppy drive interface	CN4
Speaker	J3	IDE interface	CN5
Power LED & keylock	J4	Video interface	CN6
Serial port 1	CN1	Mouse interface	CN7
Serial port 2	CN2		

## USER CONFIGURABLE SETTINGS

Function	Jumper/Switch	Position
» VGA IRQ generation disabled	JP1	pins 1 & 2 closed
VGA IRQ generation enabled	JP1	pins 2 & 3 closed
» On board VGA enabled	JP2	pins 2 & 3 closed
On board VGA disabled	JP2	pins 1 & 2 closed
» Single IDE drive enabled	JP3	pins 1 & 2 closed
Dual IDE drive enabled	JP3	pins 2 & 3 closed
» Pipeline mode enabled	JP4	pins 2 & 3 closed
Pipeline mode disabled	JP4	pins 1 & 2 closed
» Diskette drive generation of disk change disabled	JP5	pins 1 & 2 closed
Diskette drive generation of disk change enabled	JP5	pins 2 & 3 closed
» Monitor type select color	JP6	pins 1 & 2 closed
Monitor type select monochrome	JP6	pins 2 & 3 closed
» CMOS memory normal operation	JP7	pins 2 & 3 closed
CMOS memory clear	JP7	pins 1 & 2 closed
Old style Multisync monitor enabled	SW1/1	On

	All other monitors enabled	SW1/1	Off
	PS/2 style VGA installed	SW1/2	On
	AT style VGA installed	SW1/2	Off
	1024 x 768 interlaced enabled	SW1/5	On
	1024 x 768 non interlaced enabled	SW1/5	Off

<b>DRAM CONFIGURATION</b>		
Size	Bank 0	Bank 1
2MB	(2) 1M x 9	NONE
4MB	(2) 1M x 9	(2) 1M x 9
8MB	(2) 4M x 9	NONE

<b>VRAM CONFIGURATION</b>		
Size	Bank 0	Bank 1
256KB	(2) 256K x 4	NONE
512KB	(2) 256K x 4	(2) 256K x 4

Note:Bank 0 is factory installed and is not configurable.

<b>VIDEO REFRESH RATES (800 X 600)</b>			
Refresh rate	Colors	SW1/3	SW1/4
56Hz	16	On	On
56Hz	256	On	Off
56Hz	256	On	On
60Hz	16	Off	On
60Hz	256	Off	On
60Hz	256	Off	Off

72Hz	16	Off	Off
72Hz	16	On	Off