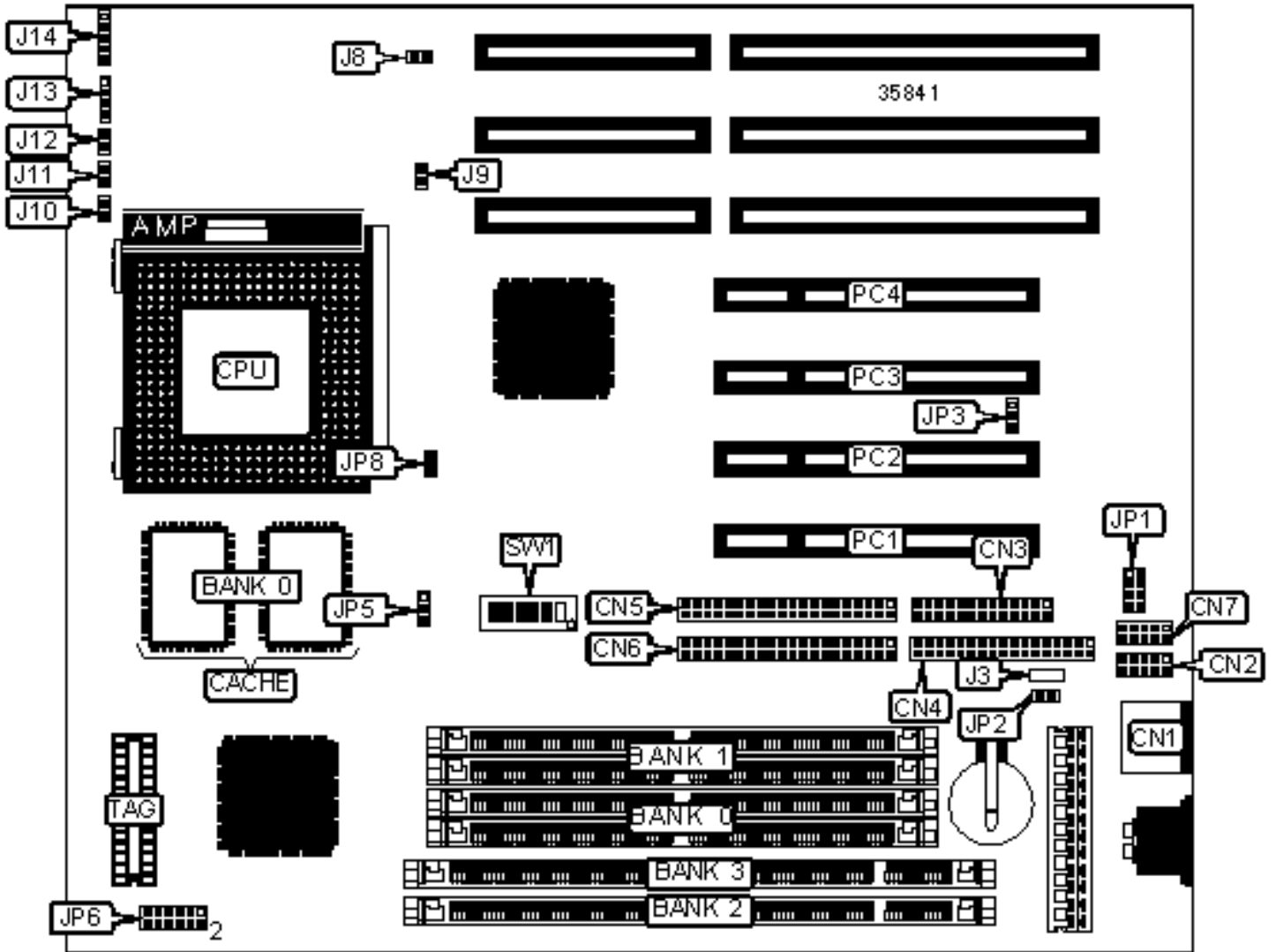


DATAEXPERT CORPORATION

TX531

Configuration



CONNECTIONS

Purpose	Location	Purpose	Location
PS/2 mouse port	CN1	CPU fan power	J9
Serial port 2	CN2	Turbo LED	J10
Parallel port	CN3	IDE interface LED	J11
Floppy drive interface	CN4	Reset switch	J12
IDE interface 2	CN5	Speaker	J13
IDE interface 1	CN6	Power LED & keylock	J14
Serial port 1	CN7	USB connector	JP1
Green PC connector	J8	32-bit PCI slots	PC1 – PC4

USER CONFIGURABLE SETTINGS

Function	Label	Position
» Factory configured - do not alter	J3	Unidentified
» CMOS memory normal operation	JP2	Open
CMOS memory clear	JP2	Closed
» Flash BIOS voltage select 5v	JP3	Pins 1 & 2 closed
Flash BIOS voltage select 12v	JP3	Pins 2 & 3 closed
» Factory configured - do not alter	JP5	Unidentified
CPU mode select interleave	JP8	Open
CPU mode select burst	JP8	Closed

SIMM CONFIGURATION

Size	Bank 0	Bank 1
8MB	(2) 1M x 36	None
16MB	(2) 2M x 36	None

16MB	(2) 1M x 36	(2) 1M x 36
24MB	(2) 2M x 36	(2) 1M x 36
32MB	(2) 4M x 36	None
32MB	(2) 2M x 36	(2) 2M x 36
40MB	(2) 4M x 36	(2) 1M x 36
48MB	(2) 4M x 36	(2) 2M x 36
64MB	(2) 8M x 36	None
64MB	(2) 4M x 36	(2) 4M x 36
72MB	(2) 8M x 36	(2) 1M x 36
80MB	(2) 8M x 36	(2) 2M x 36
96MB	(2) 8M x 36	(2) 4M x 36

SIMM CONFIGURATION (CON'T)

Size	Bank 0	Bank 1
128MB	(2) 8M x 36	(2) 8M x 36
128MB	(2) 16M x 36	None
136MB	(2) 16M x 36	(2) 1M x 36
144MB	(2) 16M x 36	(2) 2M x 36
160MB	(2) 16M x 36	(2) 4M x 36
192MB	(2) 16M x 36	(2) 8M x 36
256MB	(2) 16M x 36	(2) 16M x 36

Note: Board accepts EDO memory.

DIMM CONFIGURATION

Size	Bank 0	Bank 1
8MB	(1) 1M x 64	None

16MB	(1) 2M x 64	None
16MB	(1) 1M x 64	(1) 1M x 64
24MB	(1) 2M x 64	(1) 1M x 64
32MB	(1) 4M x 64	None
32MB	(1) 2M x 64	(1) 2M x 64
40MB	(1) 4M x 64	(1) 1M x 64
48MB	(1) 4M x 64	(1) 2M x 64
64MB	(1) 8M x 64	None
64MB	(1) 4M x 64	(1) 4M x 64
72MB	(1) 8M x 64	(1) 1M x 64
80MB	(1) 8M x 64	(1) 2M x 64
96MB	(1) 8M x 64	(1) 4M x 64
128MB	(1) 16M x 64	None
128MB	(1) 8M x 64	(1) 8M x 64
136MB	(1) 16M x 64	(1) 1M x 64
144MB	(1) 16M x 64	(1) 2M x 64
160MB	(1) 16M x 64	(1) 4M x 64
192MB	(1) 16M x 64	(1) 8M x 64
256MB	(1) 16M x 64	(1) 16M x 64

Note: Board accepts SDRAM memory.

DIMM VOLTAGE CONFIGURATION

Voltage		JP6
»	3v	Pins 5 & 6, 7 & 8 closed
	5v	Pins 1 & 2, 3 & 4 closed

CACHE CONFIGURATION

Size	Bank 0	TAG
512KB	(2) 64K x 32	(1) 32K x 8

CPU SPEED SELECTION (CX 6X86)

CPU speed	Clock speed	Multiplier	SW1/1	SW1/2	SW1/3	SW1/4	SW1/5	SW1/6
133MHz	55MHz	2x	On	Off	Off	On	On	Off
150MHz	60MHz	2x	On	Off	Off	On	Off	Off
166MHz	66MHz	2x	On	Off	Off	Off	Off	Off
200MHz	75MHz	2x	On	Off	Off	Off	On	On

CPU SPEED SELECTION (CX 6X86MX)

CPU speed	Clock speed	Multiplier	SW1/1	SW1/2	SW1/3	SW1/4	SW1/5	SW1/6
166MHz	66MHz	2.5x	On	On	Off	On	Off	Off
200MHz	66MHz	2.5x	On	On	Off	Off	Off	Off
233MHz	75MHz	2.5x	On	On	Off	Off	On	On

CPU SPEED SELECTION (AM K5)

CPU speed	Clock speed	Multiplier	SW1/1	SW1/2	SW1/3	SW1/4	SW1/5	SW1/6
90MHz	60MHz	1.5x	Off	Off	Off	On	Off	Off
100MHz	66MHz	1.5x	Off	Off	Off	Off	Off	Off
120MHz	60MHz	1.5x	Off	Off	Off	On	Off	Off
133MHz	66MHz	1.5x	Off	Off	Off	Off	Off	Off
166MHz	66MHz	2.5x	On	On	Off	Off	Off	Off

CPU SPEED SELECTION (AM K6)

CPU SPEED SELECTION (AM K6)

CPU speed	Clock speed	Multiplier	SW1/1	SW1/2	SW1/3	SW1/4	SW1/5	SW1/6
166MHz	66MHz	2.5x	On	On	Off	Off	Off	Off
200MHz	66MHz	3x	Off	On	Off	Off	Off	Off
233MHz	66MHz	3.5x	Off	Off	Off	Off	Off	Off

CPU SPEED SELECTION (INTEL)

CPU speed	Clock speed	Multiplier	SW1/1	SW1/2	SW1/3	SW1/4	SW1/5	SW1/6
90MHz	60MHz	1.5x	Off	Off	Off	On	Off	Off
100MHz	66MHz	1.5x	Off	Off	Off	Off	Off	Off
120MHz	60MHz	2x	On	Off	Off	On	Off	Off
133MHz	66MHz	2x	On	Off	Off	Off	Off	Off
150MHz	60MHz	2.5x	On	On	Off	On	Off	Off
166MHz	66MHz	2.5x	On	On	Off	Off	Off	Off
200MHz	66MHz	3x	Off	On	Off	Off	Off	Off

CPU SPEED SELECTION (INTEL MMX)

CPU speed	Clock speed	Multiplier	SW1/1	SW1/2	SW1/3	SW1/4	SW1/5	SW1/6
166MHz	66MHz	2.5x	On	On	Off	Off	Off	Off
200MHz	66MHz	3x	Off	On	Off	Off	Off	Off
233MHz	66MHz	3.5x	Off	Off	Off	Off	Off	Off