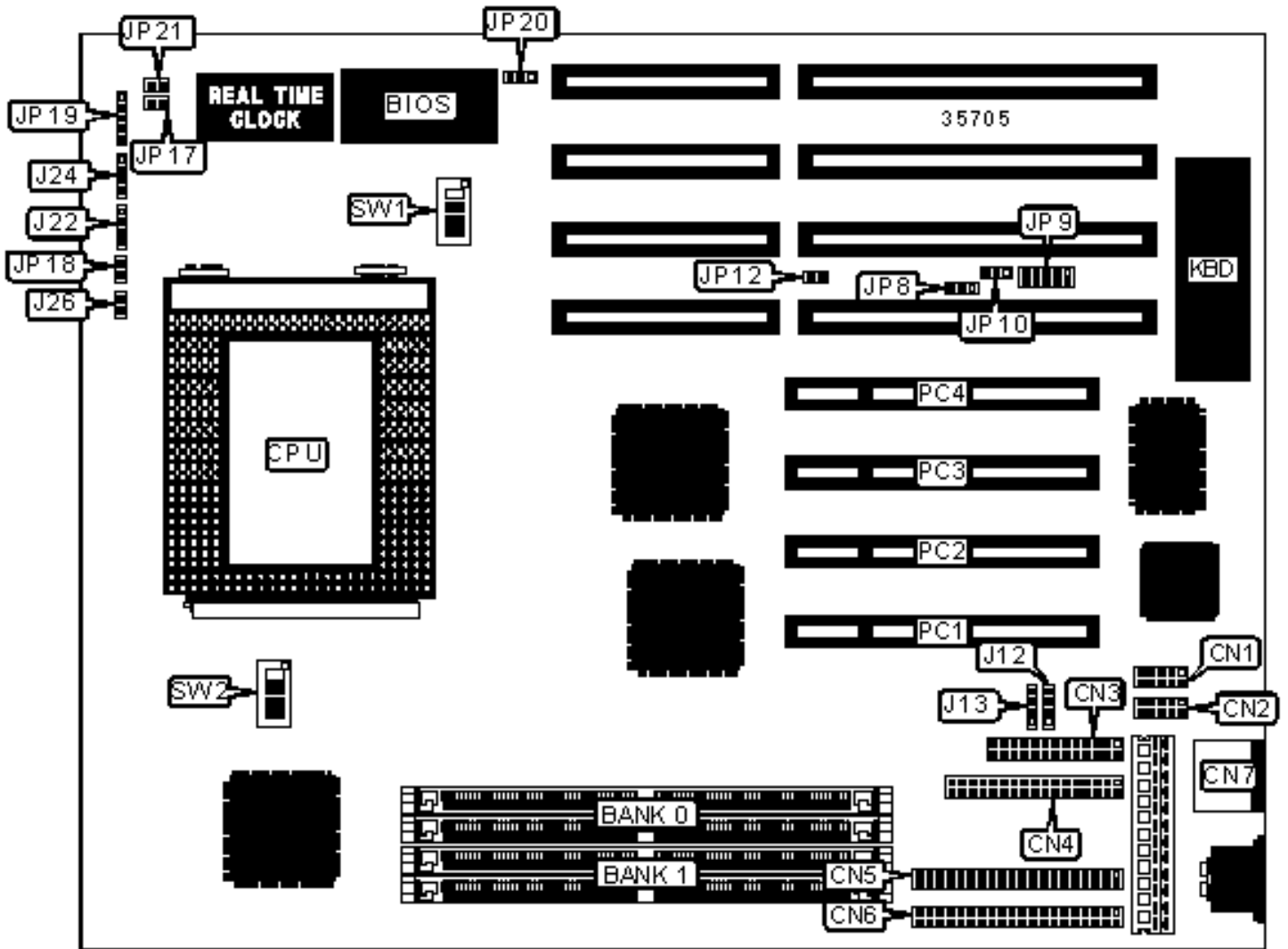


DATAEXPERT CORPORATION

EXP8P61

Configuration



CONNECTIONS

Purpose	Location	Purpose	Location
Serial port 2	CN1	USB connector 2	J13
Serial port 1	CN2	IDE interface LED	J22
Parallel port	CN3	Speaker	J24
Floppy drive interface	CN4	Turbo LED	J26
IDE interface 1	CN5	Reset switch	JP18
IDE interface 2	CN6	Power LED & keylock	JP19
PS/2 mouse port	CN7	Green PC connector	JP21
USB connector 1	J12	32-bit PCI slots	PC1 – PC4

USER CONFIGURABLE SETTINGS

Function	Label	Position
» Factory configured - do not alter	JP9	Unidentified
» AT bus CLK select PCICLK/4	JP12	Closed
AT bus CLK select PCICLK/3	JP12	Open
» CMOS memory normal operation	JP17	Open
CMOS memory clear	JP17	Closed
» Flash BIOS voltage select 5v	JP20	Pins 1 & 2 closed
Flash BIOS voltage select 12v	JP20	Pins 2 & 3 closed

SIMM CONFIGURATION

Size	Bank 0	Bank 1
8MB	(2) 1M x 36	None
16MB	(2) 2M x 36	None
16MB	(2) 1M x 36	(2) 1M x 36

24MB	(2) 2M x 36	(2) 1M x 36
32MB	(2) 4M x 36	None
32MB	(2) 2M x 36	(2) 2M x 36
40MB	(2) 4M x 36	(2) 1M x 36
48MB	(2) 4M x 36	(2) 2M x 36
64MB	(2) 8M x 36	None
64MB	(2) 4M x 36	(2) 4M x 36
72MB	(2) 8M x 36	(2) 1M x 36
80MB	(2) 8M x 36	(2) 2M x 36
96MB	(2) 8M x 36	(2) 4M x 36
128MB	(2) 8M x 36	(2) 8M x 36

CACHE CONFIGURATION

Note: 256KB/512KB cache is located on the Pentium Pro CPU.

CPU SPEED SELECTION

CPU speed	Clock speed	Multiplier	SW1/1	SW1/2	SW1/3	SW1/4
150MHz	60MHz	2.5x	On	Off	On	On
180MHz	60MHz	3x	On	Off	On	On
200MHz	66MHz	3x	On	Off	On	On

CPU SPEED SELECTION (CON'T)

CPU speed	Clock speed	Multiplier	SW2/1	SW2/2	SW2/3	SW2/4
150MHz	60MHz	2.5x	On	On	On	Off
180MHz	60MHz	3x	On	Off	On	Off
200MHz	66MHz	3x	Off	On	Off	On

DMA CHANNEL SELECTION

Channel	JP8	JP10
1	Pins 1 & 2 closed	Pins 1 & 2 closed
3	Pins 2 & 3 closed	Pins 2 & 3 closed