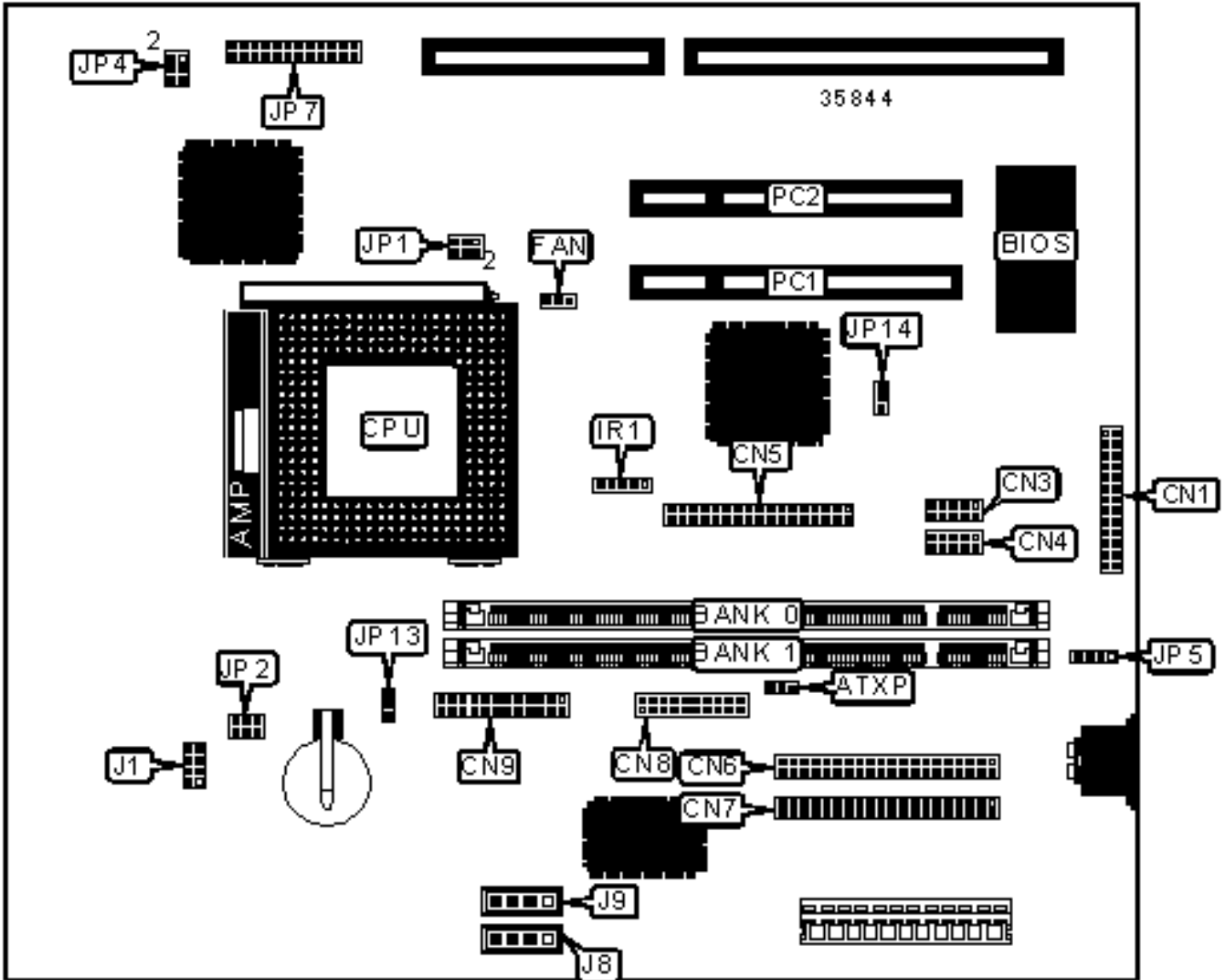


# DATAEXPERT CORPORATION

## MGX7520 (BABY AT)

### Configuration



## CONNECTIONS

Purpose	Location	Purpose	Location
ATX-P connector	ATXP	Audio in - CD-ROM	J8
Parallel port	CN1	Audio in - CD-ROM	J9
Serial port 2	CN3	PS/2 mouse interface	JP5
Serial port 1	CN4	Power LED & keylock	JP7/pins 1 - 5
Floppy drive interface	CN5	Green PC LED	JP7/pins 8 & 9
IDE interface 2	CN6	Soft off power supply	JP7/pins 10 & 11
IDE interface 1	CN7	Reset switch	JP7/pins 12 & 24
Game interface	CN8	Speaker	JP7/pins 13 - 16
MIDI/TV out connector	CN9	IDE interface LED	JP7/pins 20 & 21
Chassis fan power	FAN	Green PC connector	JP7/pins 22 & 23
IR connector	IR1	32-bit PCI slots	PC1 – PC2

## USER CONFIGURABLE SETTINGS

Function	Label	Position
» Factory configured - do not alter	J1	Unidentified
» CMOS memory normal operation	JP13	Pins 1 & 2 closed
CMOS memory clear	JP13	Pins 2 & 3 closed
» Factory configured - do not alter	JP14	Unidentified

## DIMM CONFIGURATION

Size	Bank 0	Bank 1
8MB	(1) 1M x 64	None
16MB	(1) 2M x 64	None
16MB	(1) 1M x 64	(1) 1M x 64

24MB	(1) 2M x 64	(1) 1M x 64
32MB	(1) 4M x 64	None
32MB	(1) 2M x 64	(1) 2M x 64
40MB	(1) 4M x 64	(1) 1M x 64
48MB	(1) 4M x 64	(1) 2M x 64
64MB	(1) 8M x 64	None
64MB	(1) 4M x 64	(1) 4M x 64
72MB	(1) 8M x 64	(1) 1M x 64
80MB	(1) 8M x 64	(1) 2M x 64
96MB	(1) 8M x 64	(1) 4M x 64

### DIMM CONFIGURATION (CON'T)

Size	Bank 0	Bank 1
128MB	(1) 16M x 64	None
128MB	(1) 8M x 64	(1) 8M x 64
136MB	(1) 16M x 64	(1) 1M x 64
144MB	(1) 16M x 64	(1) 2M x 64
160MB	(1) 16M x 64	(1) 4M x 64
192MB	(1) 16M x 64	(1) 8M x 64
256MB	(1) 16M x 64	(1) 16M x 64

Note: Board accepts SDRAM memory.

### VIDEO MEMORY CONFIGURATION

Note: the size & location of the video memory is unidentified.

### CPU INTERNAL CLOCK SPEED SELECTION

Speed	JP1
6x	Pins 1 & 3, 4 & 6 closed
7x	Pins 2 & 4, 3 & 5 closed

CPU SPEED SELECTION	
Speed	JP4
30MHz	Pins 3 & 5, 4 & 6 closed
33MHz	Pins 1 & 3, 4 & 6 closed

CPU VOLTAGE SELECTION		
Voltage	V core	JP2
3.3v	2.9v/3.6v	Pins 1 & 2, 4 & 5 closed
2.9v/3.6v	2.9v/3.6v	Pins 2 & 3, 5 & 6 closed