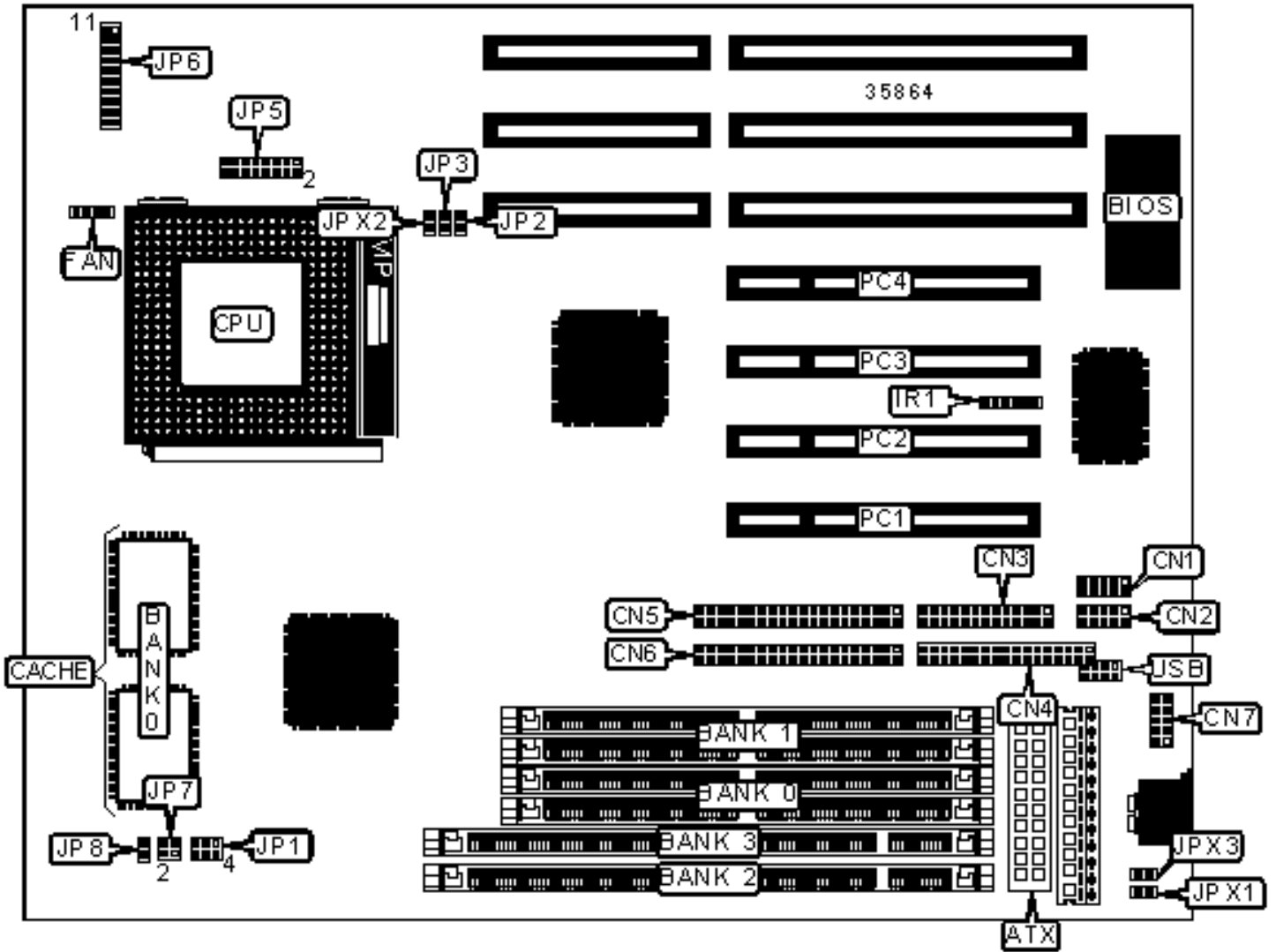


DATAEXPERT CORPORATION

TX430II

Configuration



CONNECTIONS

Purpose	Location	Purpose	Location
ATX power connector	ATX	Green PC LED	JP6/pins 1 & 11
Serial port 1	CN1	Green PC connector	JP6/pins 2 & 12
Serial port 2	CN2	IDE interface LED	JP6/pins 3 & 13
Parallel port	CN3	Reset switch	JP6/pins 4 & 14
Floppy drive interface	CN4	Turbo LED	JP6/pins 5 & 15
IDE interface 2	CN5	Speaker	JP6/pins 7 – 10
IDE interface 1	CN6	Power LED & keylock	JP6/pins 16 - 20
PS/2 mouse interface	CN7	Soft off power supply	JPX2
CPU fan power	FAN	32-bit PCI slots	PC1 – PC4
IR connector	IR1	USB connector	USB

SIMM CONFIGURATION

Size	Bank 0	Bank 1
8MB	(2) 1M x 36	None
16MB	(2) 2M x 36	None
16MB	(2) 1M x 36	(2) 1M x 36
24MB	(2) 2M x 36	(2) 1M x 36
32MB	(2) 4M x 36	None
32MB	(2) 2M x 36	(2) 2M x 36
40MB	(2) 4M x 36	(2) 1M x 36
48MB	(2) 4M x 36	(2) 2M x 36
64MB	(2) 8M x 36	None
64MB	(2) 4M x 36	(2) 4M x 36
72MB	(2) 8M x 36	(2) 1M x 36

80MB	(2) 8M x 36	(2) 2M x 36
96MB	(2) 8M x 36	(2) 4M x 36
128MB	(2) 8M x 36	(2) 8M x 36
128MB	(2) 16M x 36	None
136MB	(2) 16M x 36	(2) 1M x 36
144MB	(2) 16M x 36	(2) 2M x 36
160MB	(2) 16M x 36	(2) 4M x 36
192MB	(2) 16M x 36	(2) 8M x 36
256MB	(2) 16M x 36	(2) 16M x 36
Note: Board accepts EDO memory.		

DIMM CONFIGURATION		
Size	Bank 2	Bank 3
8MB	(1) 1M x 64	None
16MB	(1) 2M x 64	None
16MB	(1) 1M x 64	(1) 1M x 64
24MB	(1) 2M x 64	(1) 1M x 64
32MB	(1) 4M x 64	None
32MB	(1) 2M x 64	(1) 2M x 64
40MB	(1) 4M x 64	(1) 1M x 64
48MB	(1) 4M x 64	(1) 2M x 64
64MB	(1) 8M x 64	None
64MB	(1) 4M x 64	(1) 4M x 64
72MB	(1) 8M x 64	(1) 1M x 64
80MB	(1) 8M x 64	(1) 2M x 64
96MB	(1) 8M x 64	(1) 4M x 64

128MB	(1) 16M x 64	None
128MB	(1) 8M x 64	(1) 8M x 64
136MB	(1) 16M x 64	(1) 1M x 64
144MB	(1) 16M x 64	(1) 2M x 64
160MB	(1) 16M x 64	(1) 4M x 64
192MB	(1) 16M x 64	(1) 8M x 64
256MB	(1) 16M x 64	(1) 16M x 64

Note: Board accepts SDRAM memory.

CACHE CONFIGURATION

Size	Bank 0
256KB	(2) 32K x 32
512KB	(2) 64K x 32

CPU SPEED SELECTION (CX 6X86)

CPU speed	Clock speed	Multiplier	JP1	JP7
133MHz	55MHz	2x	1 & 4, 2 & 5	1 & 3
150MHz	60MHz	2x	1 & 4	1 & 3
166MHz	66MHz	2x	Open	1 & 3
200MHz	75MHz	2x	2 & 5	1 & 3

Note: Pins designated should be in the closed position.

CPU SPEED SELECTION (CX 6X86MX)

CPU speed	Clock speed	Multiplier	JP1	JP7
166MHz	66MHz	2x	Open	1 & 3
200MHz	75MHz	2x	2 & 5	1 & 3

233MHz	75MHz	2.5x	2 & 5	1 & 3, 2 & 4
233MHz	66MHz	3x	Open	2 & 4
Note: Pins designated should be in the closed position.				

CPU SPEED SELECTION (AM K5)				
CPU speed	Clock speed	Multiplier	JP1	JP7
90MHz	60MHz	1.5x	1 & 4	Open
100MHz	66MHz	1.5x	Open	Open
120MHz	60MHz	1.5x	1 & 4	Open
133MHz	66MHz	1.5x	Open	Open
150MHz	60MHz	2.5x	1 & 4	1 & 3, 2 & 4
166MHz	66MHz	2.5x	Open	1 & 3, 2 & 4
200MHz	66MHz	3x	Open	2 & 4
Note: Pins designated should be in the closed position.				

CPU SPEED SELECTION (AM K6)				
CPU speed	Clock speed	Multiplier	JP1	JP7
166MHz	66MHz	2.5x	Open	1 & 3, 2 & 4
200MHz	66MHz	3x	Open	2 & 4
233MHz	66MHz	3.5x	Open	Open
Note: Pins designated should be in the closed position.				

CPU SPEED SELECTION (INTEL)				
CPU speed	Clock speed	Multiplier	JP1	JP7
90MHz	60MHz	1.5x	1 & 4	Open
100MHz	66MHz	1.5x	Open	Open

120MHz	60MHz	2x	1 & 4	1 & 3
133MHz	66MHz	2x	Open	1 & 3
150MHz	60MHz	2.5x	1 & 4	1 & 3, 2 & 4
166MHz	66MHz	2.5x	Open	1 & 3, 2 & 4
200MHz	66MHz	3x	Open	2 & 4
Note: Pins designated should be in the closed position.				

CPU SPEED SELECTION (INTEL MMX)				
CPU speed	Clock speed	Multiplier	JP1	JP7
166MHz	66MHz	2.5x	Open	1 & 3, 2 & 4
200MHz	66MHz	3x	Open	2 & 4
233MHz	66MHz	3.5x	Open	Open
266MHz	66MHz	4x	Open	1 & 3
Note: Pins designated should be in the closed position.				

CPU TYPE SELECTION		
Type		JP3
»	All other CPU types	Open
	CX 6x86 only	Closed

CPU TYPE SELECTION (AM K6)		
Type		JP8
»	All other CPU types	Open
	AM K6 3.5x	Closed

CPU TYPE SELECTION (AM K6)		
-----------------------------------	--	--

Type	JP2
AM K6 2.0v	Open
» AM K6 2.9v/3.2v	Closed

CPU VOLTAGE SELECTION	
Voltage	JP5
2.0v	Pins 1 & , 5 & 6, 7 & 8 closed
2.8v	Pins 3 & 4, 5 & 6, 7 & 8 closed
2.9v	Pins 3 & 4, 5 & 6, 7 & 8 closed
3.2v	Pins 5 & 6, 7 & 8, 13 & 14 closed
3.3v	Pins 9 & 10, 11 & 12, 15 & 16 closed
3.52v	Pins 9 & 10, 11 & 12 closed

POWER SUPPLY SELECTION		
Setting	JPX1	JPX3
AT	Closed	Open
ATX	Open	Closed