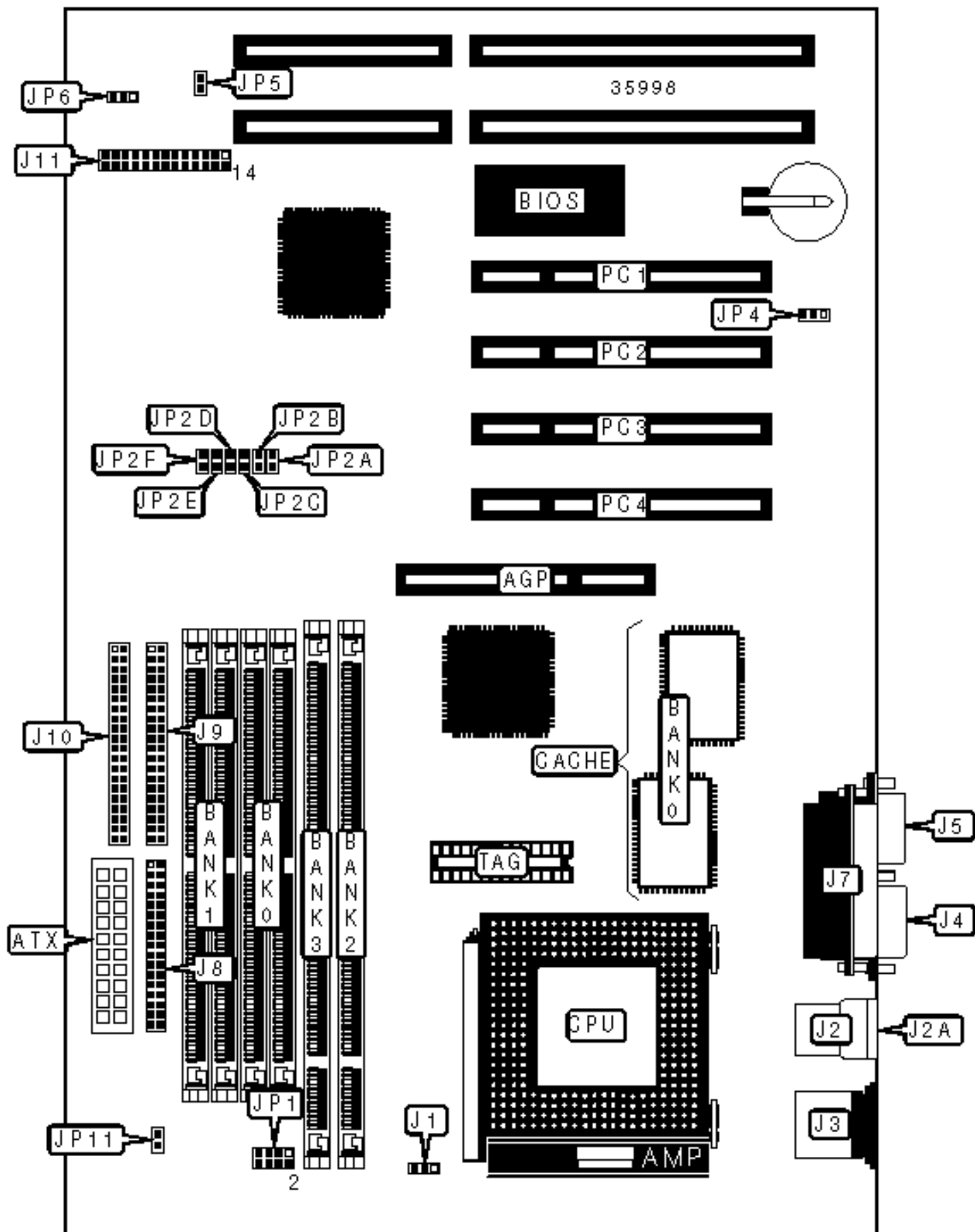


BIOSTAR MICROTECH INTERNATIONAL CORPORATION

M5ALA

Configuration



CONNECTIONS

Purpose	Location	Purpose	Location
AGP slot	AGP	IDE interface 2	J9
ATX power connector	ATX	IDE interface 1	J10
CPU fan power	J1	Speaker	J11/pins 1 – 4
USB connector 1	J2	Power LED & keylock	J11/pins 5 - 10
USB connector 2	J2A	Soft off power supply	J11/pins 10 & 11
PS/2 mouse port	J3	Reset switch	J11/pins 12 & 13
Serial port 1	J4	5V ground	J11/pins 14 & 15
Serial port 2	J5	Green PC connector	J11/pins 17 & 18
Wake on LAN connector	J6	IDE interface LED	J11/pins 20 & 21
Parallel port	J7	IR connector	J11/pins 22 - 26
Floppy drive interface	J8	32-bit PCI slots	PC1 – PC4

Note: The location of J6 is unidentified.

USER CONFIGURABLE SETTINGS

Function	Label	Position
» CMOS memory normal operation	JP4	Pins 1 & 2 closed
CMOS memory clear	JP4	Pins 2 & 3 closed
On board battery disabled	JP4	Open
» Factory configured - do not alter	JP5	Unidentified
» Factory configured - do not alter	JP6	Unidentified

SIMM CONFIGURATION

Size	Bank 0	Bank 1
8MB	(2) 1M x 36	None

16MB	(2) 2M x 36	None
16MB	(2) 1M x 36	(2) 1M x 36
24MB	(2) 2M x 36	(2) 1M x 36
32MB	(2) 4M x 36	None
32MB	(2) 2M x 36	(2) 2M x 36
40MB	(2) 4M x 36	(2) 1M x 36
48MB	(2) 4M x 36	(2) 2M x 36
64MB	(2) 8M x 36	None
64MB	(2) 4M x 36	(2) 4M x 36
72MB	(2) 8M x 36	(2) 1M x 36
80MB	(2) 8M x 36	(2) 2M x 36
96MB	(2) 8M x 36	(2) 4M x 36
128MB	(2) 8M x 36	(2) 8M x 36

DIMM CONFIGURATION

Size	Bank 2	Bank 3
8MB	(1) 1M x 64	None
16MB	(1) 2M x 64	None
16MB	(1) 1M x 64	(1) 1M x 64
24MB	(1) 2M x 64	(1) 1M x 64
32MB	(1) 4M x 64	None
32MB	(1) 2M x 64	(1) 2M x 64
40MB	(1) 4M x 64	(1) 1M x 64
48MB	(1) 4M x 64	(1) 2M x 64
64MB	(1) 8M x 64	None
64MB	(1) 4M x 64	(1) 4M x 64

72MB	(1) 8M x 64	(1) 1M x 64
80MB	(1) 8M x 64	(1) 2M x 64
96MB	(1) 8M x 64	(1) 4M x 64
128MB	(1) 8M x 64	(1) 8M x 64
Note: Board accepts SDRAM memory.		

CACHE CONFIGURATION		
Size	Bank 0	TAG
512KB	(2) 64K x 32	Unidentified

CPU SPEED SELECTION (CX 6X86)								
CPU speed	Clock speed	Multiplier	JP2A	JP2B	JP2C	JP2D	JP2E	JP2F
150MHz	60MHz	2x	Closed	Closed	Closed	Closed	Open	Open
166MHz	66MHz	2x	Open	Closed	Closed	Closed	Open	Open
200MHz	75MHz	2x	Closed	Closed	Open	Closed	Open	Open

CPU SPEED SELECTION (CX 6X86L)								
CPU speed	Clock speed	Multiplier	JP2A	JP2B	JP2C	JP2D	JP2E	JP2F
150MHz	60MHz	2x	Closed	Closed	Closed	Closed	Open	Open
166MHz	66MHz	2x	Open	Closed	Closed	Closed	Open	Open
200MHz	75MHz	2x	Closed	Closed	Open	Closed	Open	Open

CPU SPEED SELECTION (CX MII)								
CPU speed	Clock speed	Multiplier	JP2A	JP2B	JP2C	JP2D	JP2E	JP2F
150MHz	60MHz	2x	Closed	Closed	Closed	Closed	Open	Open
166MHz	66MHz	2x	Open	Closed	Closed	Closed	Open	Open

166MHz	60MHz	2.5x	Closed	Closed	Closed	Closed	Closed	Open
200MHz	75MHz	2x	Closed	Closed	Open	Closed	Open	Open
200MHz	66MHz	2.5x	Open	Closed	Closed	Closed	Closed	Open
233MHz	83MHz	2x	Open	Closed	Open	Closed	Open	Open
200MHz	60MHz	3x	Closed	Closed	Closed	Open	Closed	Open
233MHz	75MHz	2.5x	Closed	Closed	Open	Closed	Closed	Open
233MHz	66MHz	3x	Open	Closed	Closed	Open	Closed	Open
266MHz	83MHz	2.5x	Open	Closed	Open	Closed	Closed	Open
300MHz	75MHz	3x	Closed	Closed	Open	Open	Closed	Open
300MHz	66MHz	3.5x	Open	Closed	Closed	Open	Open	Open
333MHz	75MHz	3.5x	Closed	Closed	Open	Open	Open	Open

CPU SPEED SELECTION (IDT C6)

CPU speed	Clock speed	Multiplier	JP2A	JP2B	JP2C	JP2D	JP2E	JP2F
180MHz	60MHz	3x	Closed	Closed	Closed	Open	Closed	Open
200MHz	66MHz	3x	Open	Closed	Closed	Open	Closed	Open

CPU SPEED SELECTION (AM K5)

CPU speed	Clock speed	Multiplier	JP2A	JP2B	JP2C	JP2D	JP2E	JP2F
120MHz	60MHz	2x	Closed	Closed	Closed	Closed	Open	Open
133MHz	66MHz	2x	Open	Closed	Closed	Closed	Open	Open
166MHz	66MHz	2x	Open	Closed	Closed	Closed	Open	Open
200MHz	66MHz	3x	Open	Closed	Closed	Open	Closed	Open

CPU SPEED SELECTION (AM K6)

CPU speed	Clock speed	Multiplier	JP2A	JP2B	JP2C	JP2D	JP2E	JP2F
-----------	-------------	------------	------	------	------	------	------	------

166MHz	66MHz	2.5x	Open	Closed	Closed	Closed	Closed	Open
200MHz	66MHz	3x	Open	Closed	Closed	Open	Closed	Open
233MHz	66MHz	3.5x	Open	Closed	Closed	Open	Open	Open
266MHz	66MHz	4x	Open	Closed	Closed	Closed	Open	Closed
300MHz	66MHz	4.5x	Open	Closed	Closed	Closed	Closed	Closed

CPU SPEED SELECTION (AM K6-2)

CPU speed	Clock speed	Multiplier	JP2A	JP2B	JP2C	JP2D	JP2E	JP2F
250MHz	100MHz	2.5x	Open	Open	Open	Closed	Closed	Open
300MHz	100MHz	3x	Open	Open	Open	Open	Closed	Open
333MHz	95MHz	3.5x	Closed	Open	Open	Open	Open	Open

CPU SPEED SELECTION (INTEL)

CPU speed	Clock speed	Multiplier	JP2A	JP2B	JP2C	JP2D	JP2E	JP2F
120MHz	60MHz	2x	Closed	Closed	Closed	Closed	Open	Open
133MHz	66MHz	2x	Open	Closed	Closed	Closed	Open	Open
150MHz	60MHz	2.5x	Closed	Closed	Closed	Closed	Closed	Open
166MHz	66MHz	2.5x	Open	Closed	Closed	Closed	Closed	Open
200MHz	66MHz	3x	Open	Closed	Closed	Open	Closed	Open

CPU SPEED SELECTION (INTEL MMX)

CPU speed	Clock speed	Multiplier	JP2A	JP2B	JP2C	JP2D	JP2E	JP2F
166MHz	66MHz	2.5x	Open	Closed	Closed	Closed	Closed	Open
200MHz	66MHz	3x	Open	Closed	Closed	Open	Closed	Open
233MHz	66MHz	3.5x	Open	Closed	Closed	Open	Open	Open

CPU VOLTAGE SELECTION (SINGLE)

Voltage	JP1	JP11
3.5v	Pins 1 & 2, 3 & 4, 5 & 6, 7 & 8 closed	Open

CPU VOLTAGE SELECTION (DUAL)

Voltage	V core	JP1	JP11
3.3v	2.1v	Pins 1 & 2 closed	Open
3.3v	2.2v	Pins 3 & 4 closed	Open
3.3v	2.8v	Pins 7 & 8 closed	Open
3.3v	2.9v	Pins 1 & 2 closed	Open
3.3v	3.2v	Pins 5 & 6, 7 & 8 closed	Open
3.3v	3.3v	Pins 1 & 2, 5 & 6, 7 & 8 closed	Open
3.45v	2.2v	Pins 3 & 4 closed	Open