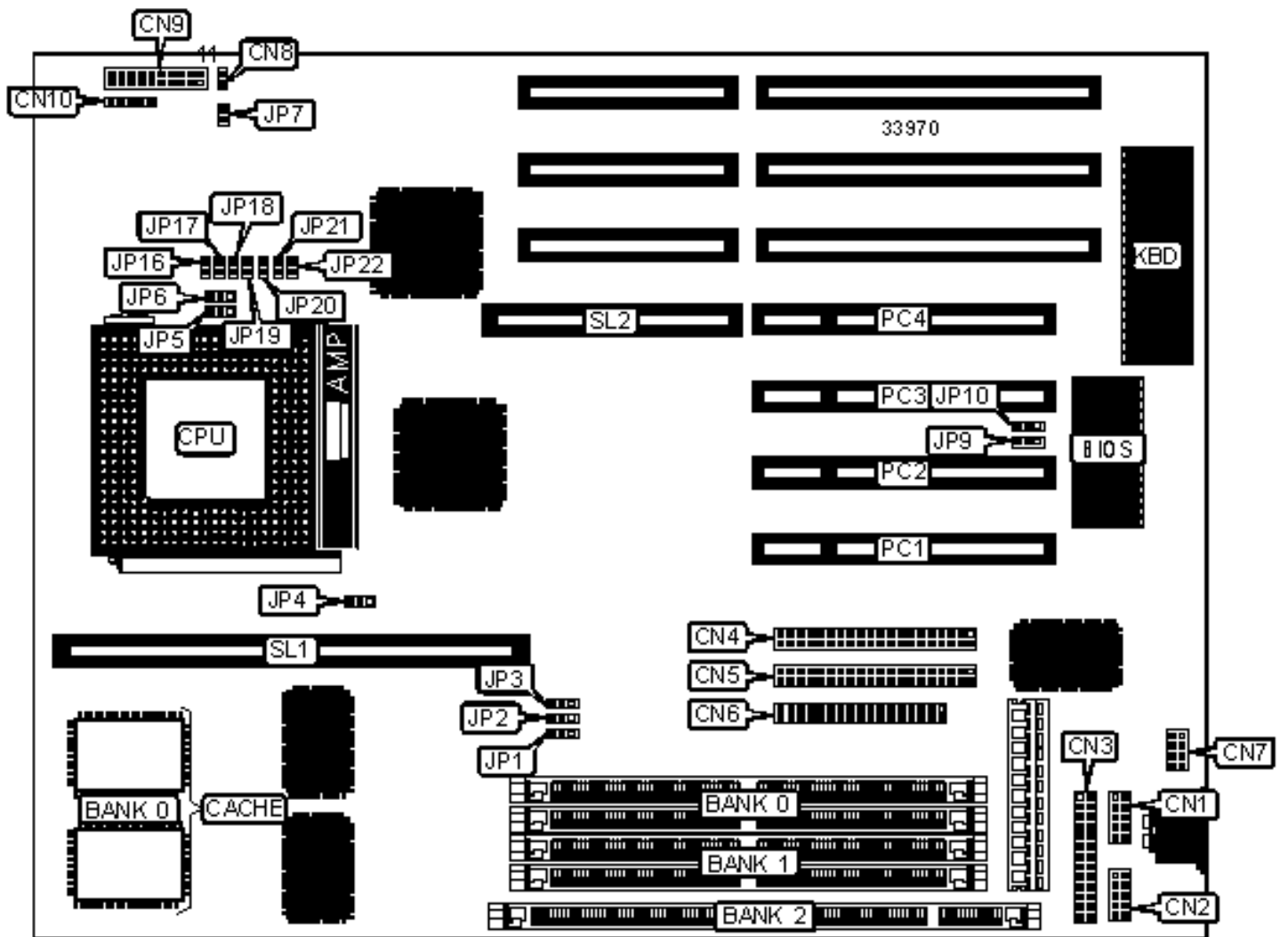


ASUS COMPUTER INTERNATIONAL

P/I-P55TVP4 (REV. 1.5)

Configuration



CONNECTIONS

Purpose	Location	Purpose	Location
Serial port 1	CN1	Speaker	CN9 pins 7 - 10
Serial port 2	CN2	Turbo LED	CN9 pins 12 & 13
Parallel port	CN3	Green PC connector	CN9 pins 14 & 15
IDE interface 1	CN4	Reset switch	CN9 pins 19 & 20
IDE interface 2	CN5	IR connector	CN10
Floppy drive interface	CN6	32-bit PCI slots	PC1 - PC4
PS/2 mouse interface	CN7	Cache slot	SL1
IDE interface LED	CN8	MediaBus slot	SL2
Power LED & keylock	CN9 pins 1 - 5		

USER CONFIGURABLE SETTINGS

Function	Label	Position
» CMOS memory normal operation	JP7	Open
CMOS memory clear	JP7	Closed
» On board I/O enabled	JP9	Pins 1 & 2 closed
On board I/O disabled	JP9	Pins 2 & 3 closed
» Flash BIOS normal operation	JP10	Pins 1 & 2 closed
Flash BIOS boot block enabled	JP10	Pins 2 & 3 closed
» Factory configured - do not alter	JP21	Unidentified
» Factory configured - do not alter	JP22	Unidentified

DIMM/DRAM CONFIGURATION

Size	Bank 0	Bank 1	Bank 2
8MB	(2) 1M x 36	None	None

8MB	None	None	(1) 1M x 64
16MB	(2) 2M x 36	None	None
16MB	(2) 1M x 36	(2) 1M x 36	None
16MB	None	None	(1) 2M x 64
16MB	(2) 1M x 36	None	(1) 1M x 64
24MB	(2) 2M x 36	(2) 1M x 36	None
24MB	(2) 1M x 36	None	(1) 2M x 64
24MB	(2) 2M x 36	None	(1) 1M x 64
32MB	(2) 4M x 36	None	None
32MB	(2) 2M x 36	(2) 2M x 36	None
32MB	None	None	(1) 4M x 64
32MB	(2) 2M x 36	None	(1) 2M x 64
40MB	(2) 4M x 36	(2) 1M x 36	None
40MB	(2) 1M x 36	None	(1) 4M x 64
40MB	(2) 4M x 36	None	(1) 1M x 64
48MB	(2) 4M x 36	(2) 2M x 36	None
48MB	(2) 2M x 36	None	(1) 4M x 64

DIMM/DRAM CONFIGURATION (CON'T)

Size	Bank 0	Bank 1	Bank 2
48MB	(2) 4M x 36	None	(1) 2M x 64
64MB	(2) 8M x 36	None	None
64MB	(2) 4M x 36	(2) 4M x 36	None
64MB	None	None	(1) 8M x 64
64MB	(2) 4M x 36	None	(1) 4M x 64
72MB	(2) 8M x 36	(2) 1M x 36	None

72MB	(2) 1M x 36	None	(1) 8M x 64
72MB	(2) 8M x 36	None	(1) 1M x 64
80MB	(2) 8M x 36	(2) 2M x 36	None
80MB	(2) 2M x 36	None	(1) 8M x 64
80MB	(2) 8M x 36	None	(1) 2M x 64
96MB	(2) 8M x 36	(2) 4M x 36	None
96MB	(2) 4M x 36	None	(1) 8M x 64
96MB	(2) 8M x 36	None	(1) 4M x 64
128MB	(2) 8M x 36	(2) 8M x 36	None
128MB	(2) 8M x 36	None	(1) 8M x 64

Note: Board accepts EDO memory.

CACHE CONFIGURATION

Size	Bank 0	SL1
256KB (A)	(2) 32K x 32	Not installed
256KB (B)	None	256KB module installed
512KB (A)	None	512KB module installed
512KB (B)	(2) 64K x 32	Not installed

CACHE JUMPER CONFIGURATION

Size	JP4
256KB (A)	Pins 2 & 3 closed
256KB (B)	Pins 2 & 3 closed
512KB (A)	Pins 1 & 2 closed
512KB (B)	Pins 1 & 2 closed

CPU SPEED SELECTION (CYRIX)

CPU speed	Clock speed	Multiplier	JP1	JP2	JP3	JP5	JP6
166MHz	66MHz	2x	1 & 2	1 & 2	1 & 2	1 & 2	2 & 3

Note: Pins designated should be in the closed position.

CPU SPEED SELECTION (AMD)

CPU speed	Clock speed	Multiplier	JP1	JP2	JP3	JP5	JP6
75MHz	50MHz	1.5x	1 & 2	1 & 2	2 & 3	1 & 2	1 & 2
90MHz	60MHz	1.5x	1 & 2	2 & 3	1 & 2	1 & 2	1 & 2
100MHz	66MHz	1.5x	1 & 2	1 & 2	1 & 2	1 & 2	1 & 2

Note: Pins designated should be in the closed position.

CPU SPEED SELECTION (INTEL)

CPU speed	Clock speed	Multiplier	JP1	JP2	JP3	JP5	JP6
75MHz	50MHz	1.5x	1 & 2	2 & 3	2 & 3	1 & 2	1 & 2
90MHz	60MHz	1.5x	1 & 2	2 & 3	1 & 2	1 & 2	1 & 2
100MHz	66MHz	1.5x	1 & 2	1 & 2	1 & 2	1 & 2	1 & 2
120MHz	60MHz	2x	1 & 2	2 & 3	1 & 2	1 & 2	2 & 3
133MHz	66MHz	2x	1 & 2	1 & 2	1 & 2	1 & 2	2 & 3
150MHz	60MHz	2.5x	1 & 2	2 & 3	1 & 2	2 & 3	2 & 3
166MHz	66MHz	2.5x	1 & 2	1 & 2	1 & 2	2 & 3	2 & 3
180MHz	60MHz	3x	1 & 2	2 & 3	1 & 2	2 & 3	1 & 2
200MHz	66MHz	3x	1 & 2	1 & 2	1 & 2	2 & 3	1 & 2

Note: Pins designated should be in the closed position.

CPU VOLTAGE SELECTION (SINGLE)

Voltage		JP16	JP17
»	3.38v	Closed	Open
	3.5v	Open	Closed

CPU VOLTAGE SELECTION (DUAL)					
Voltage		JP18	JP19	JP20	
	2.7v	Open	Closed	Open	
»	2.8v	Closed	Open	Open	
	2.88v	Open	Open	Closed	