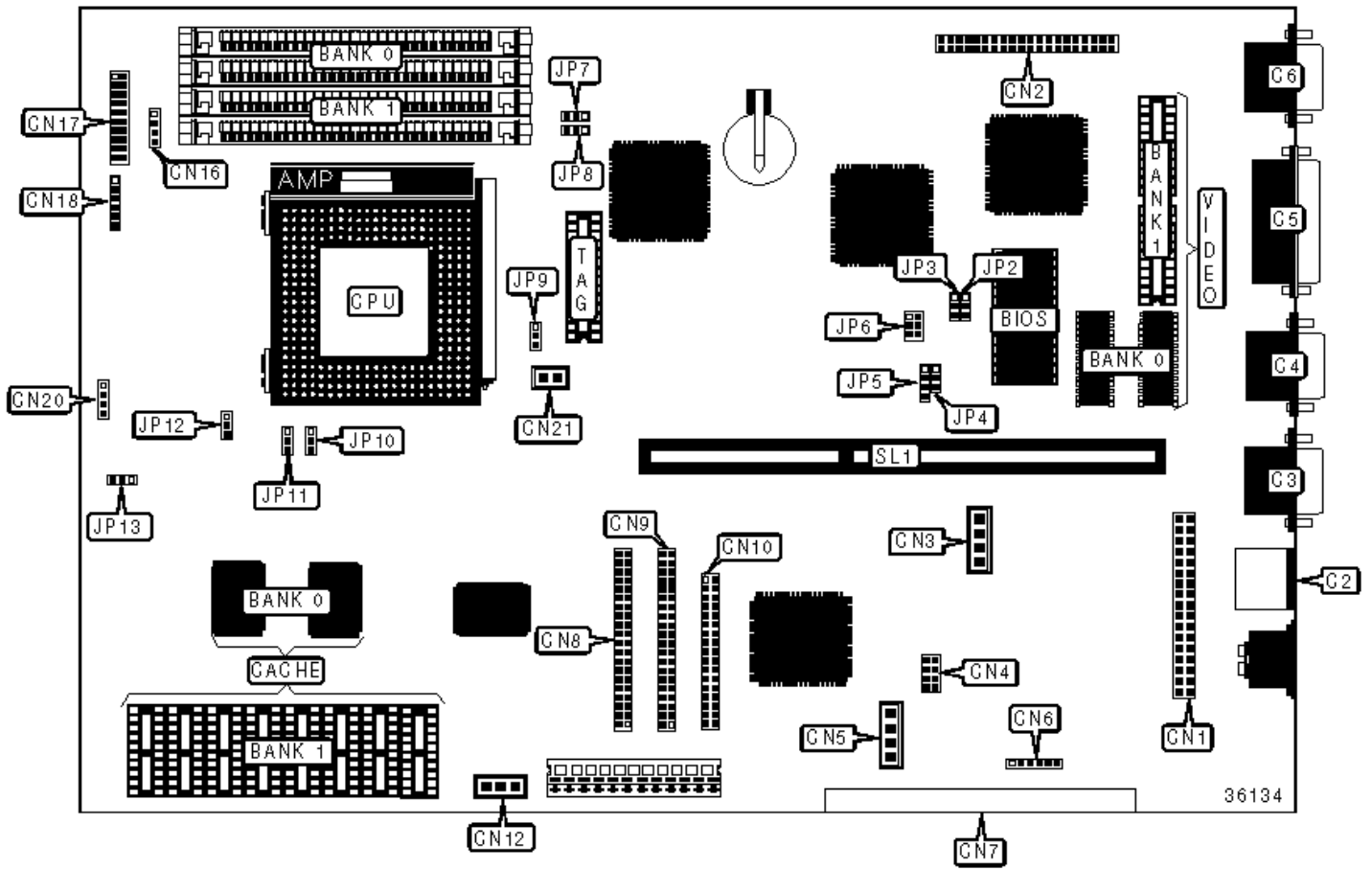


ACER

V50LAN

Configuration



## CONNECTIONS

Purpose	Location	Purpose	Location
PS/2 mouse interface	C2	IDE interface 1	CN8
Serial port 1	C3	IDE interface 2	CN9
Serial port 2	C4	Floppy drive interface	CN10
Parallel port	C5	Power LED & keylock	CN17/pins 1-5
VGA port	C6	Speaker	CN17/pins 7-10
Audio connector	CN1	Green PC LED	CN17/pins 12 & 13
ATI media connector	CN2	Turbo switch	CN17/pins 15-17
Audio in - CD-ROM	CN3	Reset switch	CN17/pins 19 & 20
Wavetable connector	CN4	Hard disk LED connector	CN20
Line in - internal	CN5	Fan connector	CN21
Fax/voice modem line in	CN6	Riser slot	SL1
VGA/Ethernet feature connector	CN7		

## USER CONFIGURABLE SETTINGS

Function	Label	Position
» Factory configured - do not alter	CN12	Reserved
» SMM switch enabled	CN16	Pins 1 & 2 closed
Reset switch enabled	CN16	Pins 2 & 3 closed
» Factory configured - do not alter	CN16/pins 3 & 4	Reserved
» BIOS type select Acer	JP2	Pins 1 & 2 closed
BIOS type select OEM	JP2	Pins 2 & 3 closed
» Password disabled	JP3	Pins 2 & 3 closed
Password enabled	JP3	Pins 1 & 2 closed
» Flash ROM boot block disabled	JP4	Pins 2 & 3 closed

	Flash ROM boot block enabled	JP4	Pins 1 & 2 closed
»	Factory configured - do not alter	JP13	Reserved

### SIMM CONFIGURATION

Size	Bank 0	Bank 1
8MB	(2) 1M x 36	None
16MB	(2) 2M x 36	None
16MB	(2) 1M x 36	(2) 1M x 36
24MB	(2) 2M x 36	(2) 1M x 36
32MB	(2) 4M x 36	None
32MB	(2) 2M x 36	(2) 2M x 36
40MB	(2) 4M x 36	(2) 1M x 36
48MB	(2) 4M x 36	(2) 2M x 36
64MB	(2) 8M x 36	None
64MB	(2) 4M x 36	(2) 4M x 36
72MB	(2) 8M x 36	(2) 1M x 36
80MB	(2) 8M x 36	(2) 2M x 36
96MB	(2) 8M x 36	(2) 4M x 36
128MB	(2) 8M x 36	(2) 8M x 36

### BIOS ROM TYPE SELECTION

Function	JP5
» Flash ROM boot block disabled	Pins 3 & 4 closed
Flash ROM boot block enabled	Pins 2 & 3 closed
Reserved	Pins 1 & 2 closed

## CACHE CONFIGURATION

Note: The cache configuration is unidentified.

## CACHE JUMPER CONFIGURATION

Size	JP7	JP8
» 256KB asynchronous or pipeline burst SRAM	Pins 1 & 2 closed	Pins 1 & 2 closed

## VIDEO MEMORY CONFIGURATION

Size	Bank 0	Bank 1
1MB	(2) 256K x 16	None
2MB	(2) 256K x 16	(2) 256K x 16

## CPU SPEED SELECTION (PENTIUM)

CPU speed	Clock speed	JP6	JP9
75MHz	50MHz	Pins 1 & 4 closed	Pins 1 & 2 closed
90MHz	60MHz	Pins 2 & 5 closed	Pins 1 & 2 closed
100MHz	50MHz	Pins 1 & 4 closed	Pins 2 & 3 closed
100MHz	66MHz	Pins 3 & 6 closed	Pins 1 & 2 closed
120MHz	60MHz	Pins 2 & 5 closed	Pins 2 & 3 closed
133MHz	66MHz	Pins 3 & 6 closed	Pins 2 & 3 closed
150MHz	60MHz	Pins 2 & 5 closed	Pins 1 & 2 closed
166MHz	66MHz	Pins 3 & 6 closed	Pins 1 & 2 closed

## CPU MULTIPLIER SELECTION (INTEL)

Multiplier	JP10	JP11
» 1.5x	Pins 1 & 2 closed	Pins 1 & 2 closed

2x	Pins 1 & 2 closed	Pins 2 & 3 closed
2.5x	Pins 2 & 3 closed	Pins 1 & 2 closed
3x	Pins 2 & 3 closed	Pins 2 & 3 closed

### CPU MULTIPLIER SELECTION (AM K5)

Multiplier	JP10	JP11
» 3x	Pins 1 & 2 closed	Pins 1 & 2 closed
2x	Pins 1 & 2 closed	Pins 2 & 3 closed

### CPU MULTIPLIER SELECTION (CX 6X86)

Multiplier	JP10	JP11
» 3x	Pins 1 & 2 closed	Pins 1 & 2 closed
2x	Pins 1 & 2 closed	Pins 2 & 3 closed

### CPU VOLTAGE SELECTION

Voltage	JP12
» 3.38v	Pins 1 & 2 closed
3.52v	Pins 2 & 3 closed