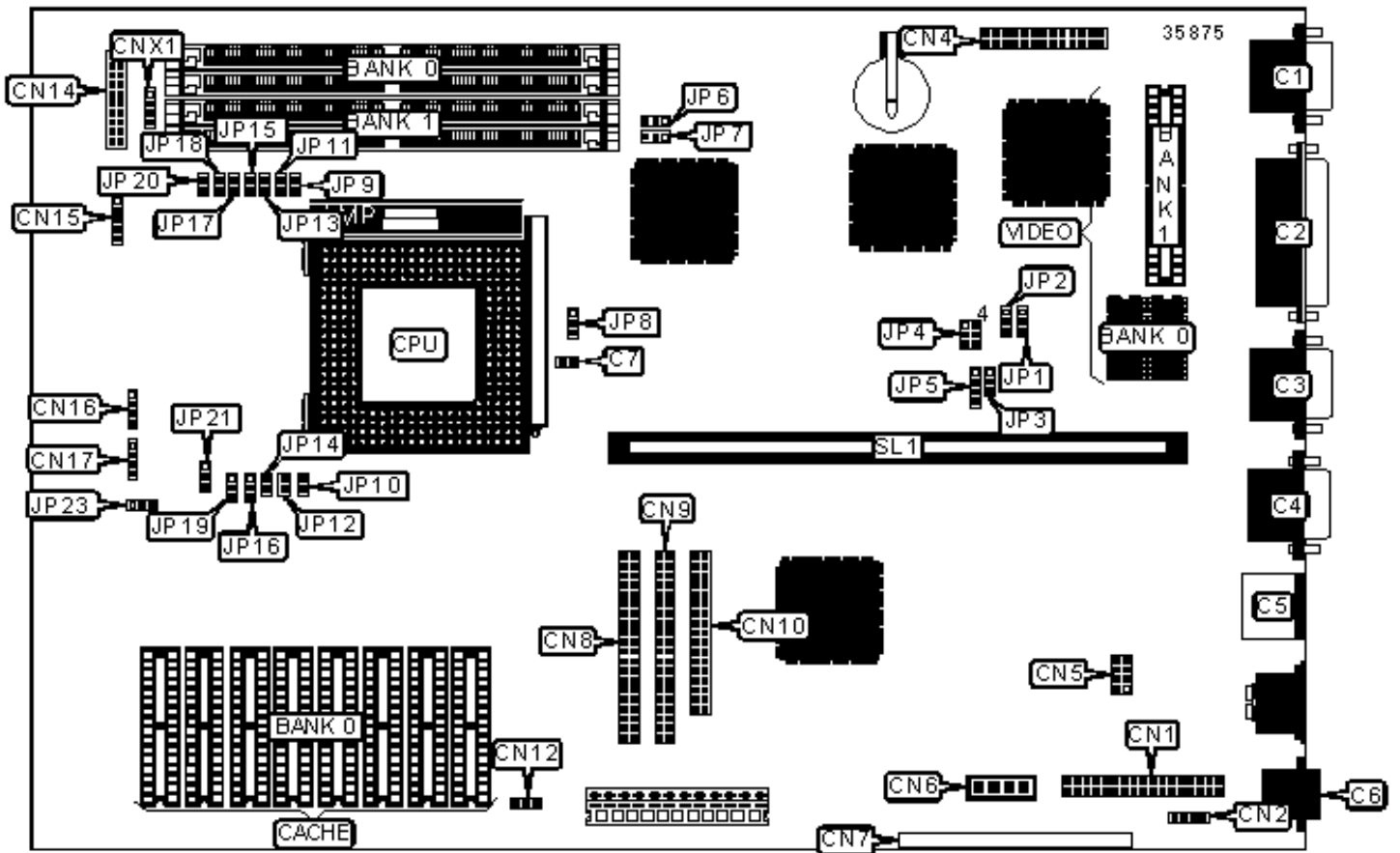


ACER, INC.

V50LA

Configuration



CONNECTIONS

Purpose	Location	Purpose	Location
VGA port	C1	IDE interface 2	CN9
Parallel port	C2	Floppy drive interface	CN10
Serial port 2	C3	Standby connector	CN12
Serial port 1	C4	Power LED & keylock	CN14/pins 1 - 5
PS/2 mouse port	C5	Speaker	CN14/pins 7 - 10
Ethernet 10BaseT connector	C6	Turbo LED	CN14/pins 12 & 13
Chassis fan power	C7	Turbo switch	CN14/pins 15 - 17
Audio connector	CN1	Reset switch	CN14/pins 19 & 20
Fax connector	CN2	IR connector	CN15
VGA feature connector	CN4	IDE interface LED	CN16
Wavetable connector	CN5	IDE interface LED (generic)	CN17
Audio in - CD-ROM	CN6	Green PC connector	CNX1
Network/multimedia interface	CN7	Riser slot	SL1
IDE interface 1	CN8		

USER CONFIGURABLE SETTINGS

Function	Label	Position
» BIOS type select Acer	JP1	Pins 1 & 2 closed
BIOS type select OEM	JP1	Pins 2 & 3 closed
» Password disabled	JP2	Pins 2 & 3 closed
Password enabled	JP2	Pins 1 & 2 closed
» Flash BIOS write protect disabled	JP3	Pins 2 & 3 closed
Flash BIOS write protect enabled	JP3	Pins 1 & 2 closed
» Factory configured - do not alter	JP9	Unidentified

»	Factory configured - do not alter	JP10	Unidentified
»	Factory configured - do not alter	JP11	Unidentified
»	Factory configured - do not alter	JP12	Unidentified
»	Factory configured - do not alter	JP13	Unidentified
»	Factory configured - do not alter	JP14	Unidentified
»	Factory configured - do not alter	JP15	Unidentified
»	Factory configured - do not alter	JP17	Unidentified
»	Factory configured - do not alter	JP18	Unidentified
»	Factory configured - do not alter	JP20	Unidentified
»	LED select IDE only	JP23	Pins 2 & 3 closed
	LED select IDE & floppy	JP23	Pins 1 & 2 closed

SIMM CONFIGURATION

Size	Bank 0	Bank 1
8MB	(2) 1M x 36	None
16MB	(2) 2M x 36	None
16MB	(2) 1M x 36	(2) 1M x 36
24MB	(2) 2M x 36	(2) 1M x 36
32MB	(2) 4M x 36	None
32MB	(2) 2M x 36	(2) 2M x 36
40MB	(2) 4M x 36	(2) 1M x 36
48MB	(2) 4M x 36	(2) 2M x 36
64MB	(2) 8M x 36	None
64MB	(2) 4M x 36	(2) 4M x 36
72MB	(2) 8M x 36	(2) 1M x 36
80MB	(2) 8M x 36	(2) 2M x 36

96MB	(2) 8M x 36	(2) 4M x 36
128MB	(2) 8M x 36	(2) 8M x 36

CACHE CONFIGURATION

Size	Bank 0
256KB	(8) 32K x 8

CACHE JUMPER CONFIGURATION

Size	JP6	JP7
256KB	Pins 1 & 2 closed	Pins 1 & 2 closed

VIDEO MEMORY CONFIGURATION

Size	Bank 0	Bank 1
1MB	(2) 256K x 16	None
2MB	(2) 256K x 16	(2) 256K x 16

CPU SPEED SELECTION

Speed	JP4
75MHz	Pins 1 & 4 closed
90MHz	Pins 2 & 5 closed
100MHz	Pins 3 & 6 closed
120MHz	Pins 2 & 5 closed
133MHz	Pins 3 & 6 closed
150MHz	Pins 2 & 5 closed
166MHz	Pins 3 & 6 closed

CPU TYPE SELECTION

Type	JP8
AM K5	Pins 1 & 2 closed
CX M1	Pins 2 & 3 closed
Intel	Pins 1 & 2 closed

CPU MULTIPLIER SELECTION (CX M1)

Multiplier	JP16	JP19
1.5x, 2x, 3x	Pins 1 & 2 closed	Pins 1 & 2 closed
1x	Pins 2 & 3 closed	Pins 1 & 2 closed
1.5x, 2x, 3x	Pins 1 & 2 closed	Pins 2 & 3 closed
1x	Pins 2 & 3 closed	Pins 2 & 3 closed

CPU MULTIPLIER SELECTION (AM K5)

Multiplier	JP16	JP19
1.5x, 2x, 3x	Pins 1 & 2 closed	Pins 1 & 2 closed
1x	Pins 2 & 3 closed	Pins 1 & 2 closed
1.5x, 2x, 3x	Pins 1 & 2 closed	Pins 2 & 3 closed
1x	Pins 2 & 3 closed	Pins 2 & 3 closed

CPU MULTIPLIER SELECTION (INTEL)

Multiplier	JP16	JP19
1.5x	Pins 1 & 2 closed	Pins 1 & 2 closed
2x	Pins 2 & 3 closed	Pins 1 & 2 closed
3x	Pins 1 & 2 closed	Pins 2 & 3 closed
2.5x	Pins 2 & 3 closed	Pins 2 & 3 closed

CPU VOLTAGE SELECTION

Voltage		JP21
»	3.3v	Pins 1 & 2 closed
	3.5v	Pins 2 & 3 closed

BIOS SELECTION

Type		JP5
	EPROM	Pins 1 & 2 closed
	Intel 28F001	Pins 2 & 3 closed
	Intel 28F010	Pins 2 & 3 closed
»	SST 29EE010	Pins 3 & 4 closed