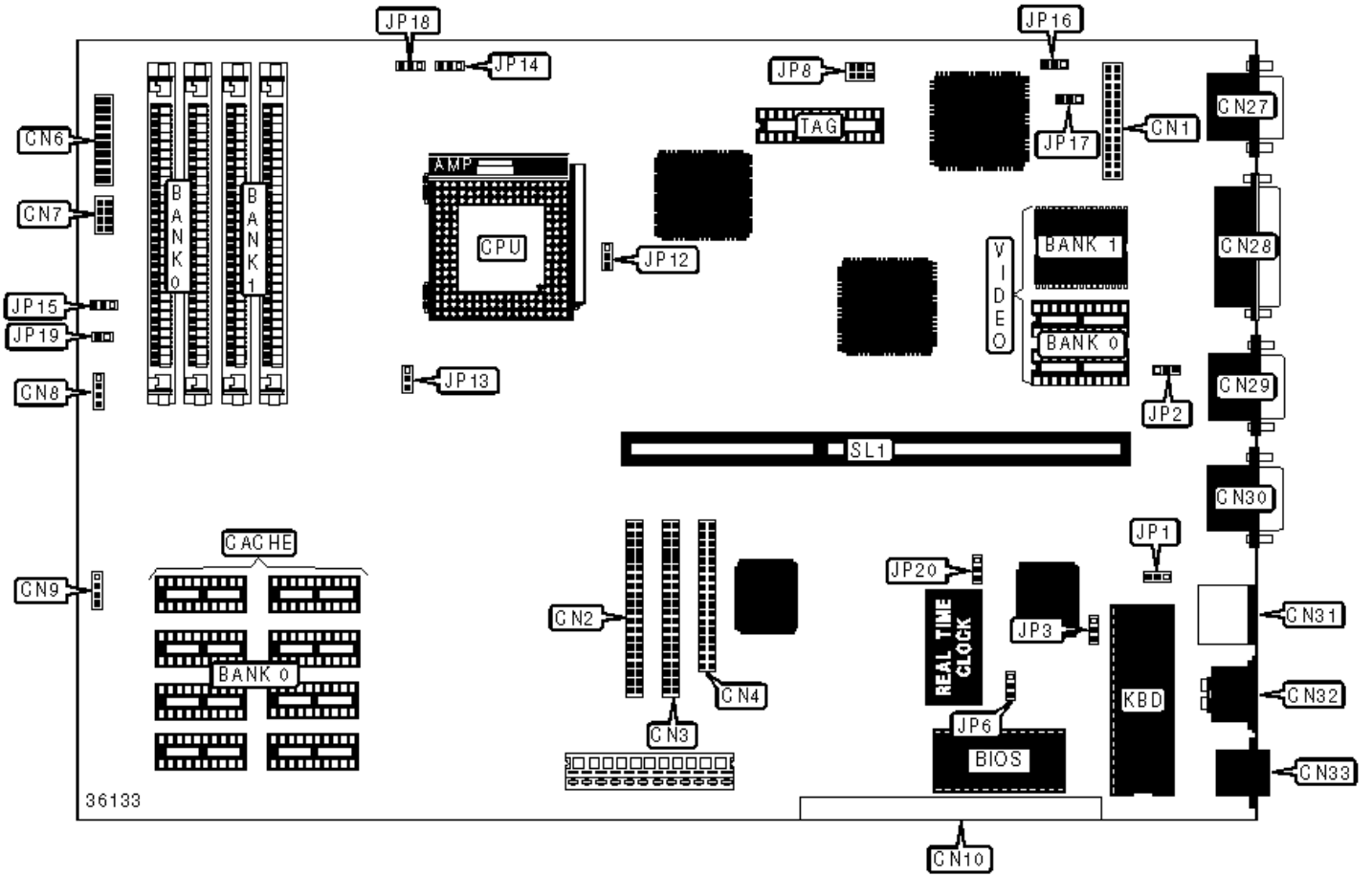


ACER, INC.

V12LC-2

Configuration



CONNECTIONS

Purpose	Location	Purpose	Location
VGA feature connector	CN1	IDE interface LED	CN8
IDE interface 1	CN2	Network/multimedia interface	CN10
IDE interface 2	CN3	VGA port	CN27
Floppy drive interface	CN4	Parallel port	CN28
Power LED & keylock	CN6/pins 1 - 5	Serial port 2	CN29
Speaker	CN6/pins 7 - 10	Serial port 1	CN30
Turbo LED	CN6/pins 12 & 13	PS/2 mouse interface	CN31
Turbo switch	CN6/pins 15 - 17	PS/2 keyboard interface	CN32
Reset switch	CN6/pins 19 & 20	RJ-45 phone jack	CN33
Power LED & keylock	CN7/pins 1 - 4	Riser slot	SL1
Reset switch	CN7/pins 6 & 7		

USER CONFIGURABLE SETTINGS

Function	Label	Position
» Factory configured - do not alter	CN9	Reserved
» BIOS type select Acer	JP1	Pins 1 & 2 closed
BIOS type select OEM	JP1	Pins 2 & 3 closed
» Password disabled	JP2	Pins 2 & 3 closed
Password enabled	JP2	Pins 1 & 2 closed
» BIOS ROM type select flash ROM	JP3	Pins 2 & 3 closed
BIOS ROM type select EPROM	JP3	Pins 1 & 2 closed
» Onboard SMC665/669 enabled	JP6	Pins 2 & 3 closed
Onboard SMC665/669 disabled	JP6	Pins 1 & 2 closed
» CPU type select P54C or AMD K5	JP12	Pins 1 & 2 closed

	CPU type select Cyrix M1	JP12	Pins 2 & 3 closed
»	Reset function	JP15	Pins 2 & 3 closed
	Suspend mode function	JP15	Pins 1 & 2 closed
»	Factory configured - do not alter	JP19	Open
»	Flash ROM control select normal work	JP20	Pins 2 & 3 closed
	Flash ROM control select boot block	JP20	Pins 1 & 2 closed

SIMM CONFIGURATION

Size	Bank 0	Bank 1
8MB	(2) 1M x 36	None
16MB	(2) 2M x 36	None
16MB	(2) 1M x 36	(2) 1M x 36
24MB	(2) 2M x 36	(2) 1M x 36
32MB	(2) 4M x 36	None
32MB	(2) 2M x 36	(2) 2M x 36
40MB	(2) 4M x 36	(2) 1M x 36
48MB	(2) 4M x 36	(2) 2M x 36
64MB	(2) 8M x 36	None
64MB	(2) 4M x 36	(2) 4M x 36
72MB	(2) 8M x 36	(2) 1M x 36
80MB	(2) 8M x 36	(2) 2M x 36
96MB	(2) 8M x 36	(2) 4M x 36
128MB	(2) 8M x 36	(2) 8M x 36

CACHE CONFIGURATION

Note: Cache configuration is unidentified.

VIDEO MEMORY CONFIGURATION

Size	Bank 0	Bank 1
1MB	(2) 256K x 16	None
2MB	(2) 256K x 16	(2) 256K x 16

CPU SPEED SELECTION

Speed	JP8
75MHz	Pins 1 & 4 closed
90MHz	Pins 2 & 5 closed
100MHz	Pins 3 & 6 closed
120MHz	Pins 2 & 5 closed
133MHz	Pins 3 & 6 closed
150MHz	Pins 2 & 5 closed

CPU MULTIPLIER SELECTION (INTEL)

Multiplier	JP14	JP18
» 1.5x	Pins 1 & 2 closed	Pins 1 & 2 closed
2x	Pins 2 & 3 closed	Pins 1 & 2 closed
2.5x	Pins 2 & 3 closed	Pins 2 & 3 closed
3x	Pins 1 & 2 closed	Pins 2 & 3 closed

CPU MULTIPLIER SELECTION (CX 6X86 & AM K5)

Multiplier	JP14	JP18
» 1x, 1.5x, 3x	Pins 1 & 2 closed	Pins 1 & 2 closed
1x	Pins 2 & 3 closed	Pins 1 & 2 closed

1x, 1.5x, 3x	Pins 1 & 2 closed	Pins 2 & 3 closed
1x	Pins 2 & 3 closed	Pins 2 & 3 closed

CPU VOLTAGE SELECTION	
Voltage	JP13
» 3.3825v	Pins 1 & 2 closed
3.5250v	Pins 2 & 3 closed

CN1 CONNECTOR SELECTION		
Setting	JP16	JP17
» Feature connector	Pins 1 & 2 closed	Pins 1 & 2 closed
I2C connector	Pins 2 & 3 closed	Pins 2 & 3 closed