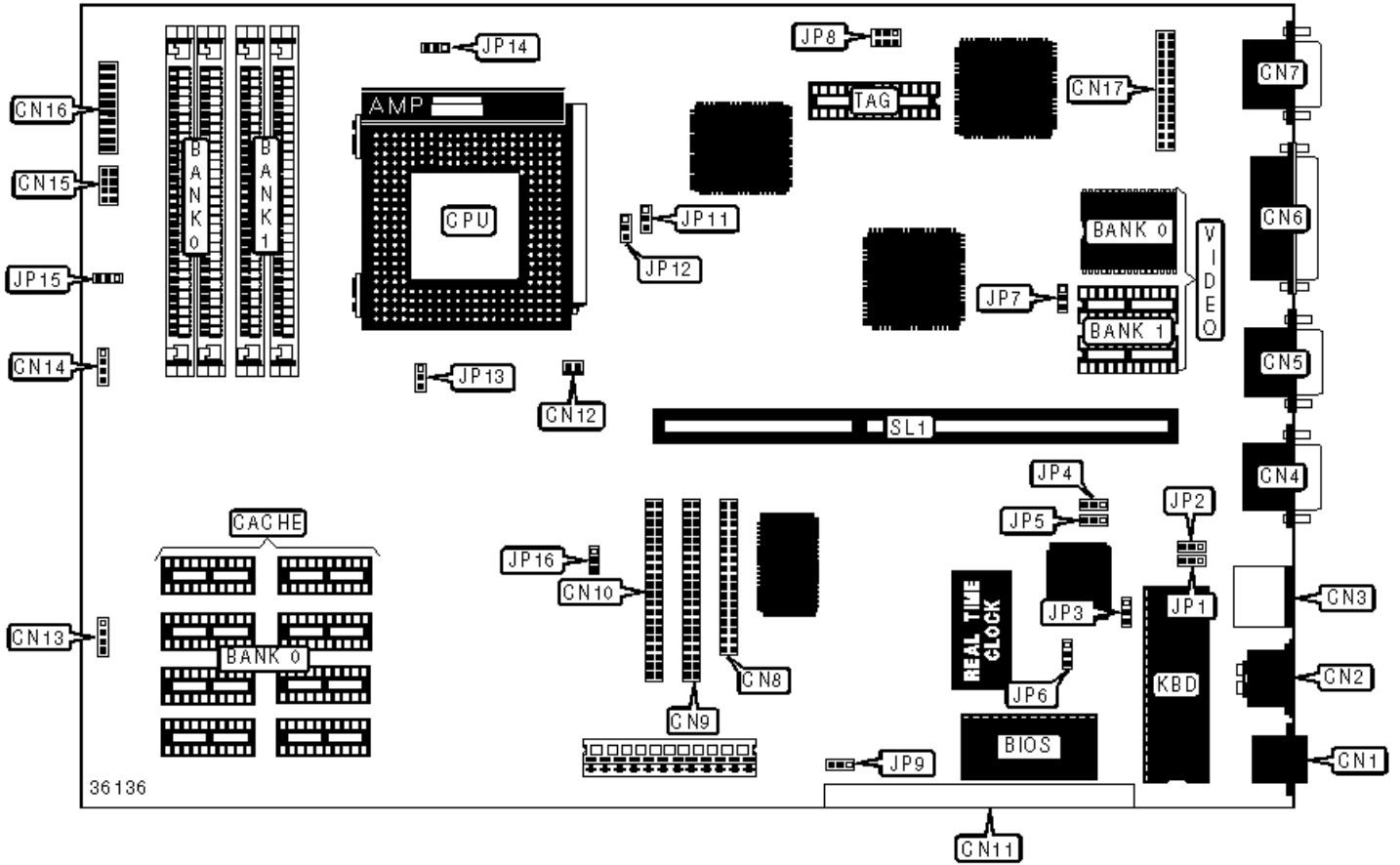


ACER, INC.

V12LC-1

Configuration



## CONNECTIONS

Purpose	Location	Purpose	Location
RJ-45 ethernet port	CN1	Network/multimedia interface	CN11
PS/2 mouse port	CN3	CPU fan connector	CN12
Serial port 1	CN4	Hard disk LED connector	CN13
Serial port 2	CN5	Hard disk LED connector	CN14
Parallel port	CN6	LED connector	CN15
VGA port	CN7	LED connector	CN16
Floppy drive interface	CN8	VGA feature connector	CN17
IDE interface 2	CN9	Riser slot	SL1
IDE interface 1	CN10		

## USER CONFIGURABLE SETTINGS

Function	Label	Position
» BIOS type select Acer	JP1	Pins 1 & 2 closed
BIOS type select OEM	JP1	Pins 2 & 3 closed
» Password disabled	JP2	Pins 2 & 3 closed
Password enabled	JP2	Pins 1 & 2 closed
» BIOS ROM type select flash ROM	JP3	Pins 1 & 2 closed
BIOS ROM type select EPROM	JP3	Pins 2 & 3 closed
» Onboard SMC665 enabled	JP6	Pins 2 & 3 closed
Onboard SMC665 disabled	JP6	Pins 1 & 2 closed
» Onboard GD543x enabled	JP7	Pins 2 & 3 closed
Onboard GD543x disabled	JP7	Pins 1 & 2 closed
» Enhanced IDE enabled	JP9	Pins 2 & 3 closed
Enhanced IDE disabled	JP9	Pins 1 & 2 closed

»	M1451 delay disabled	JP11	Pins 1 & 2 closed
	M1451 delay enabled	JP11	Pins 2 & 3 closed
»	Reset function enabled	JP15	Pins 2 & 3 closed
	SMM function enabled	JP15	Pins 1 & 2 closed
»	Factory configured - do not alter	JP16	Reserved

<b>SIMM CONFIGURATION</b>		
<b>Size</b>	<b>Bank 0</b>	<b>Bank 1</b>
8MB	(2) 1M x 36	None
16MB	(2) 2M x 36	None
16MB	(2) 1M x 36	(2) 1M x 36
24MB	(2) 2M x 36	(2) 1M x 36
32MB	(2) 4M x 36	None
32MB	(2) 2M x 36	(2) 2M x 36
40MB	(2) 4M x 36	(2) 1M x 36
48MB	(2) 4M x 36	(2) 2M x 36
64MB	(2) 8M x 36	None
64MB	(2) 4M x 36	(2) 4M x 36
72MB	(2) 8M x 36	(2) 1M x 36
80MB	(2) 8M x 36	(2) 2M x 36
96MB	(2) 8M x 36	(2) 4M x 36
128MB	(2) 8M x 36	(2) 8M x 36

<b>CACHE CONFIGURATION</b>
Note: The cache configuration is unidentified.

### VIDEO MEMORY CONFIGURATION

Size	Bank 0	Bank 1
1MB	(2) 256K x 16	None
2MB	(2) 256K x 16	(2) 256K x 16

### PARALLEL PORT DMA SELECTION

Setting	JP4	JP5
» DMA1	Pins 1 & 2 closed	Pins 1 & 2 closed
DMA3	Pins 2 & 3 closed	Pins 2 & 3 closed

### CPU SPEED SELECTION

Speed	JP8
75MHz	Pins 1 & 4 closed
90MHz	Pins 2 & 5 closed
100MHz	Pins 3 & 6 closed

### CPU TYPE SELECTION

Type	JP12
» Intel	Pins 1 & 2 closed
Cyrix M1	Pins 2 & 3 closed

### CPU MULTIPLIER SELECTION

Multiplier	JP14
» 1.5x	Pins 1 & 2 closed
2x	Pins 2 & 3 closed

## CPU VOLTAGE SELECTION

Voltage	JP13
» 3.3825v	Pins 1 & 2 closed
3.5250v	Pins 2 & 3 closed